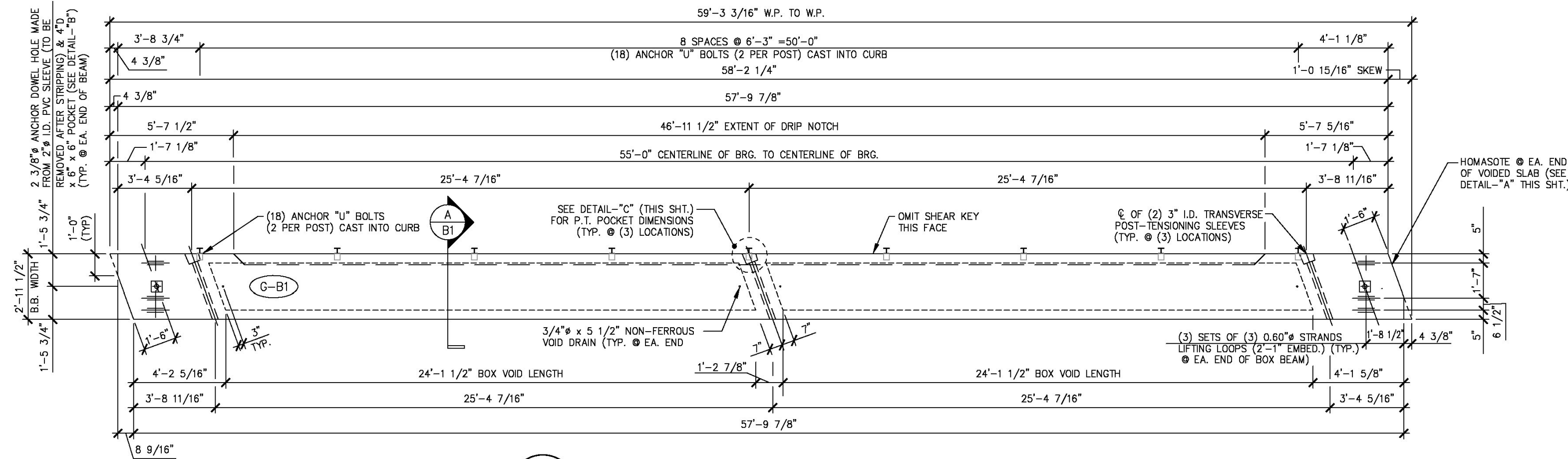
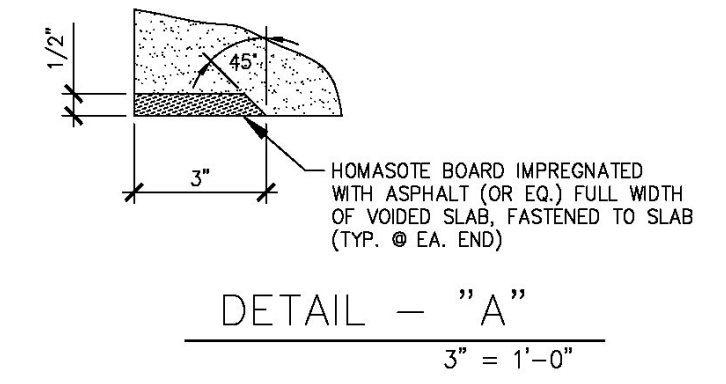


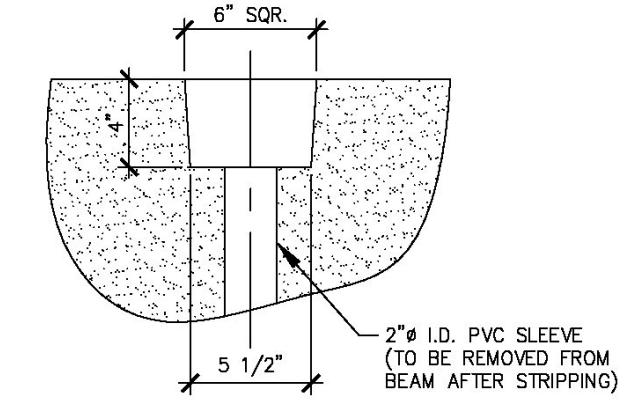
S:\Engineering Services\Carrara\14001 - Guilford Bridge 65\Production Drawings\AutoCAD Files\144236-B1.dwg, 5/16/2014 4:44:20 PM, DWG To PDF.pc3



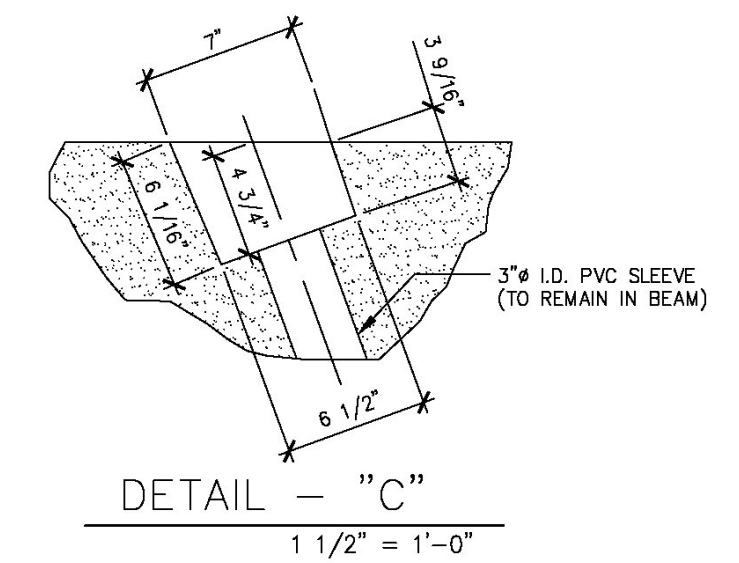
1 DIMENSIONAL PLAN VIEW IN FORM  
B1 1/4" = 1'-0"



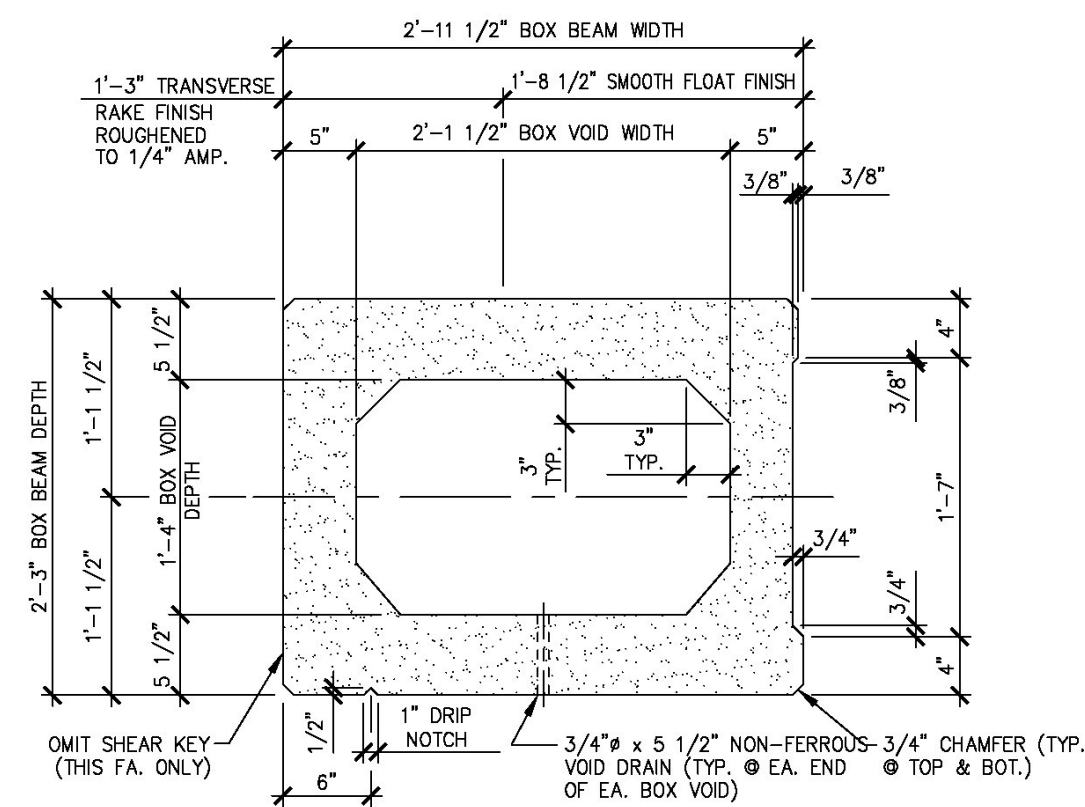
DETAIL - "A"  
3" = 1'-0"



DETAIL - "B"  
1 1/2" = 1'-0"



DETAIL - "C"  
1 1/2" = 1'-0"



A DIMENSIONAL SECTION  
B1 1" = 1'-0"

Vermont Agency of Transportation  
**RECEIVED**

CK'D BY MJC OK'D BY TAS

June 18, 2014

RESUBMIT No Approved  
BY M. J. Chenette DATE 06/19/2014

SHOP NOTE:  
SEE SHEET "B1A" FOR  
REINFORCING DETAILS.

MARK:	G-B1	QTY.:	1	WT.:	26.71 T	VOL.:	13.19 cy
MATERIAL LIST / BEAM							
ITEM	MARK	DESCRIPTION	QTY./BEAM				
			G-B1				
1							
2							
3							
4							
5							
6							
7		3/4" x 5 1/2" NON-FERROUS VOID DRAIN		4			
8		2'-2" x 1'-4 1/2" x 24'-1 1/2" BOX VOID		2			
9		SET OF (3) 0.60" STRAND LIFTING LOOPS		6			
10							

**SHOP DRAWING REVIEW**

REVIEWED AS REQUIRED BY THE CONSTRUCTION CONTRACT DOCUMENTS AND APPROVED, BUT ONLY FOR CONFORMANCE TO THE DESIGN CONCEPT OF THE WORK, AND SUBJECT TO FURTHER LIMITATIONS AND REQUIREMENTS CONTAINED IN THE CONSTRUCTION CONTRACT DOCUMENTS.

REJECTED  REVISE AND RESUBMIT  FURNISH AS CORRECTED

CORRECTIONS OR COMMENTS MADE ON THE SHOP DRAWINGS DURING THIS REVIEW DO NOT RELIEVE CONTRACTOR FROM COMPLIANCE WITH REQUIREMENTS OF THE DRAWINGS AND SPECIFICATIONS. THIS CHECK IS ONLY FOR REVIEW OF GENERAL CONFORMANCE WITH THE DESIGN CONCEPT OF THE PROJECT AND GENERAL COMPLIANCE WITH THE INFORMATION GIVEN IN THE CONTRACT DOCUMENTS. THE CONTRACTOR IS RESPONSIBLE FOR: CONFIRMING AND CORRELATING ALL QUANTITIES AND DIMENSIONS; SELECTING FABRICATION PROCESSES AND TECHNIQUES OF CONSTRUCTION; COORDINATING HIS WORK WITH THAT OF ALL OTHER TRADES; AND PERFORMING HIS WORK IN A SAFE AND SATISFACTORY MANNER.

**Vanasse Hangen Brustlin, Inc.**  
7056 US Route 7  
North Ferrisburgh, VT 05473  
802-425-7788

Job Number: 57427.00  
Reviewed By: S.E. Burbenk  
Date: 06/19/2014

APPROVAL STAMP:

**J.P. CARRARA & SONS INC.**  
Precast & Prestress Manufacturer N.T.S.  
244 OAK ST., MIDDLEBURY, VERMONT 05753 Phone: (802)388-6361 Fax: (802)388-9010

STATE OF VERMONT AGENCY OF TRANSPORTATION  
COUNTY OF WINDHAM

DATE: MAR. 04, 2014  
SCALE: NOTED

TOWN OF GUILFORD  
ROUTE NO. T.H.10, CLASS III (LOCAL ROAD)  
BRIDGE NO.: 65 PROJECT NO.: BRO 1442 (36)

CHKD: JJ/KLT DFTM: AAT/RWS  
JOB NO: 23420-014

PRESTRESSED BOX BEAM  
DIMENSIONAL DETAILS

DWG. NO: B1

**Eriksson technologies**  
813.989.3317  
TAMPA, FL LRFD.COM  
© 2014 ERIKSSON TECHNOLOGIES, INC. ALL RIGHTS RESERVED