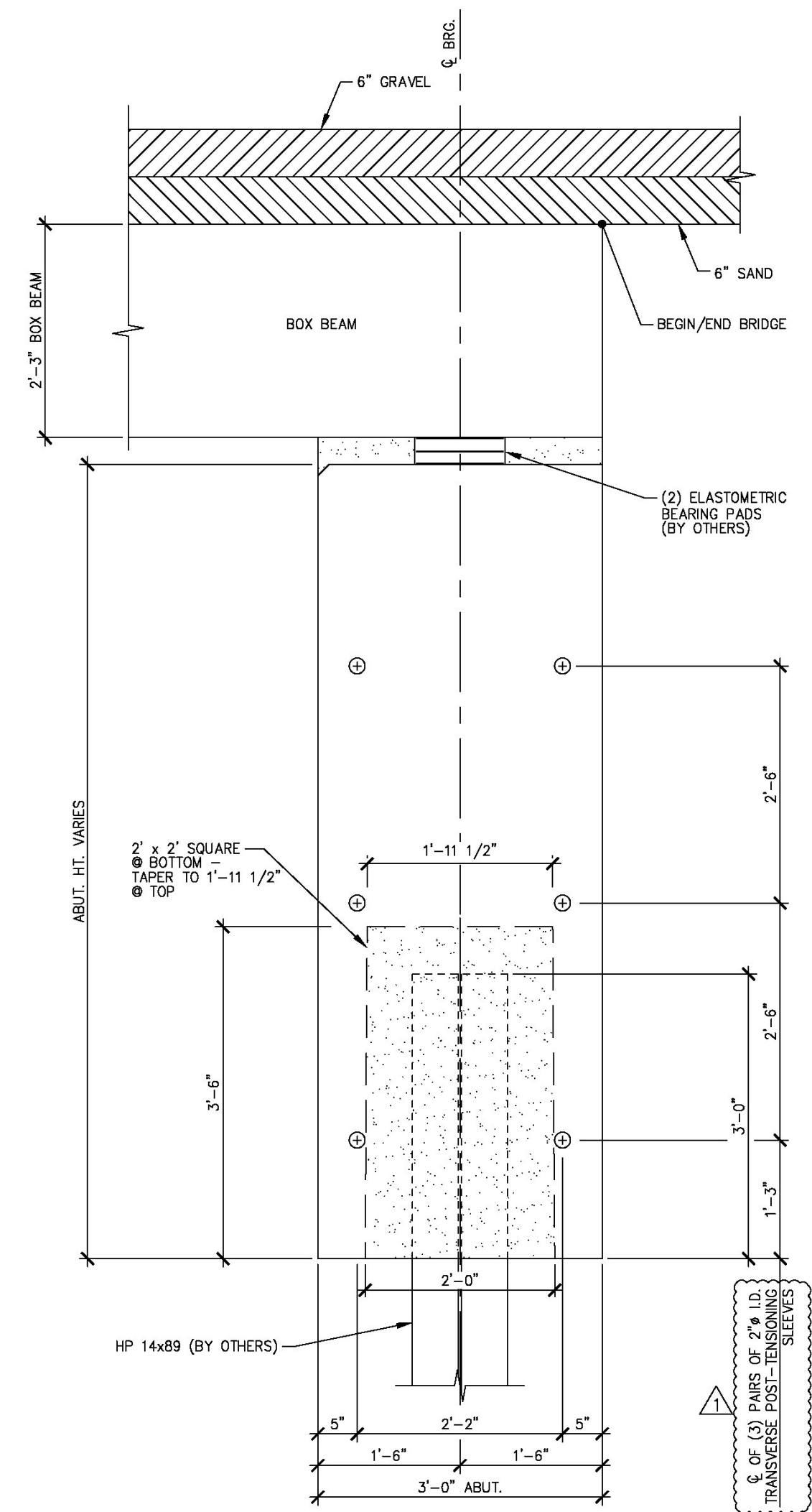
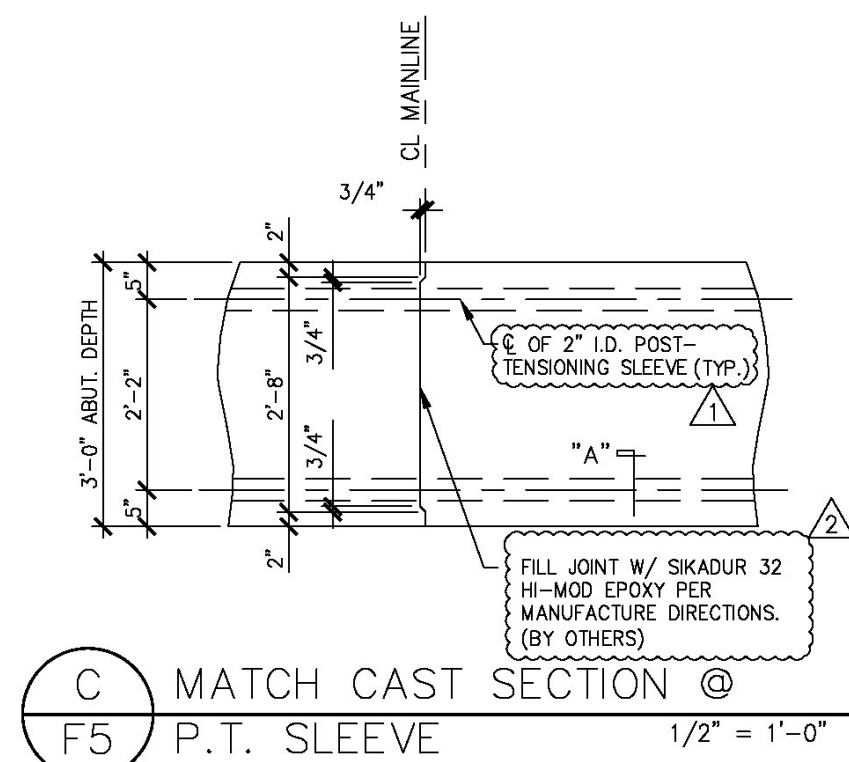


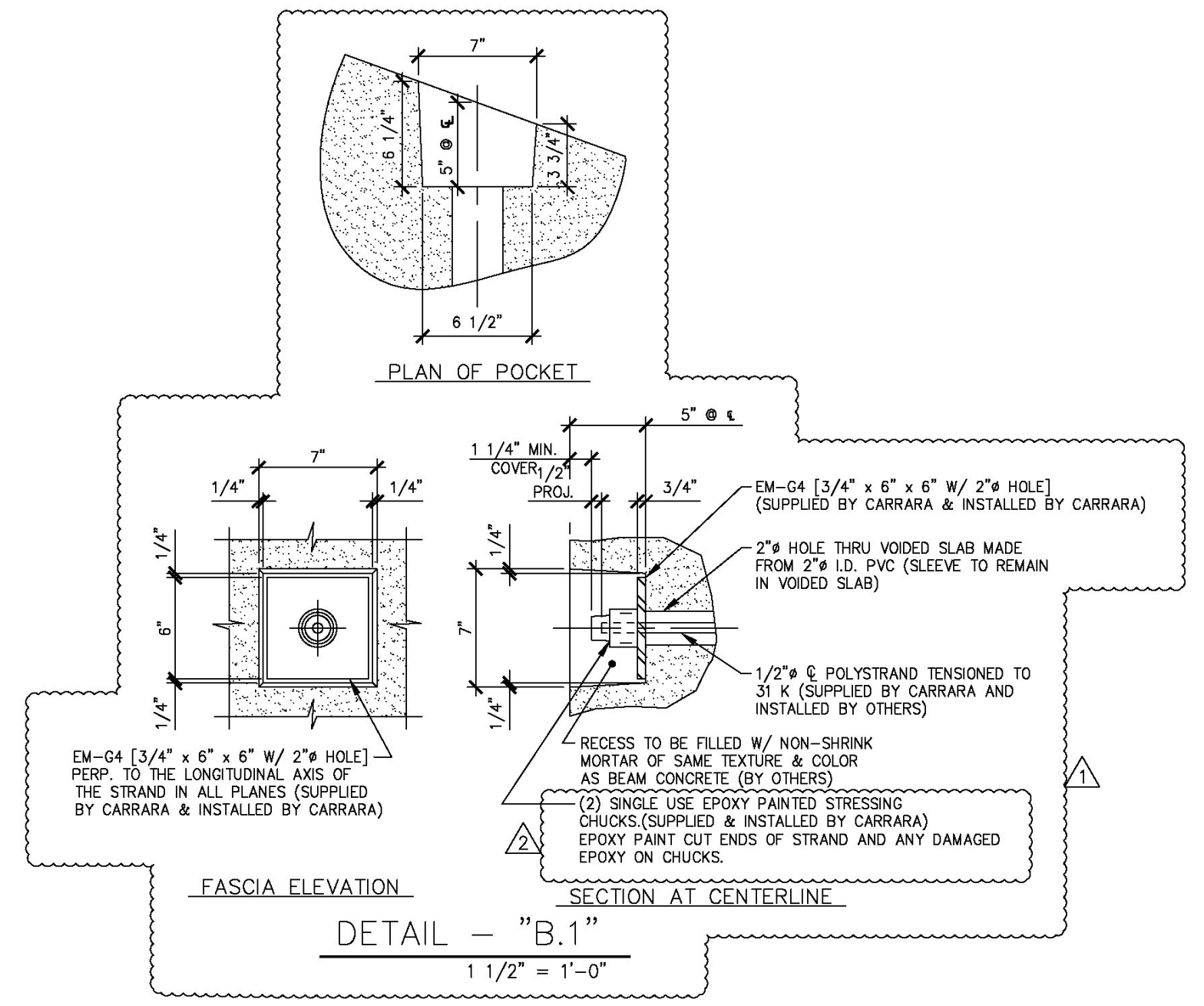
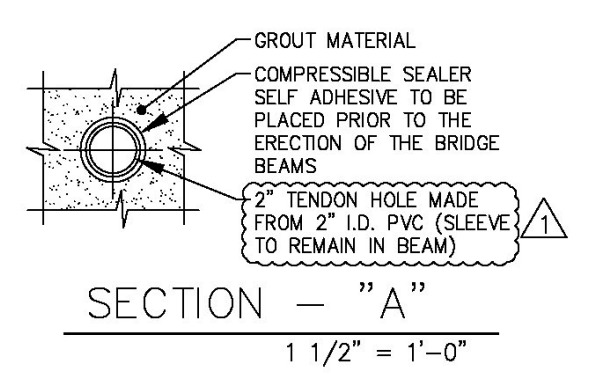
S:\Engineering Services\Carrara\14001 - Guilford Bridge 65\Production Drawings\AutoCAD Files\144236-F1.dwg, 5/6/2014 4:44:17 PM, DWG To PDF.pc3



A BEARING SECTION
F5 NEXT BEAM STEM BEARING 3/4" = 1'-0"



C MATCH CAST SECTION
F5 P.T. SLEEVE 1/2" = 1'-0"



Vermont Agency of Transportation
RECEIVED
CK'D BY MJC OK'D BY TAS
June 18, 2014
RESUBMIT No Approved
BY M. J. Chenette DATE 06/19/2014

SHOP DRAWING REVIEW

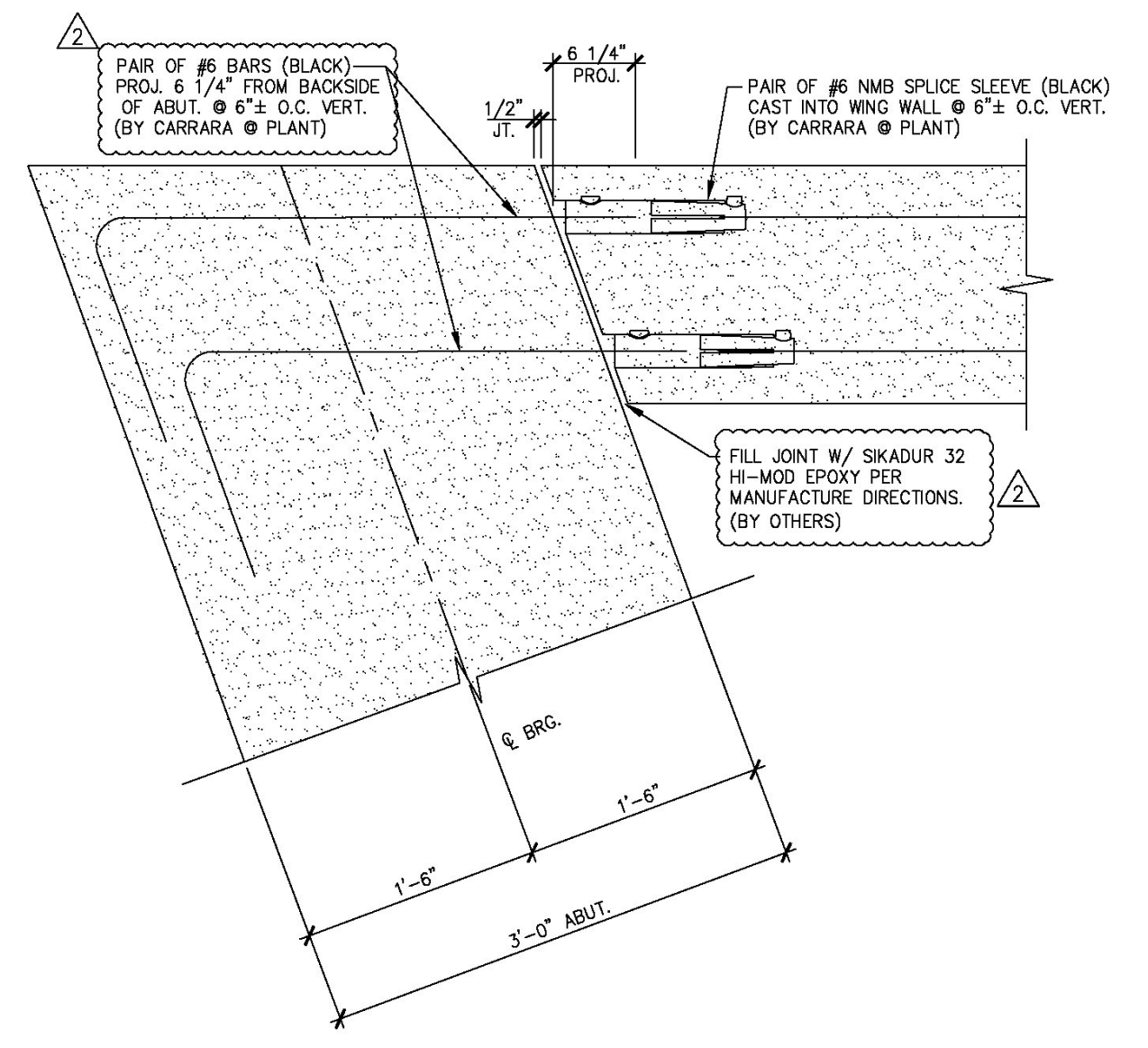
REVIEWED AS REQUIRED BY THE CONSTRUCTION CONTRACT DOCUMENTS AND APPROVED, BUT ONLY FOR CONFORMANCE TO THE DESIGN CONCEPT OF THE WORK, AND SUBJECT TO FURTHER LIMITATIONS AND REQUIREMENTS CONTAINED IN THE CONSTRUCTION CONTRACT DOCUMENTS.

REJECTED REVISE AND RESUBMIT FURNISH AS CORRECTED

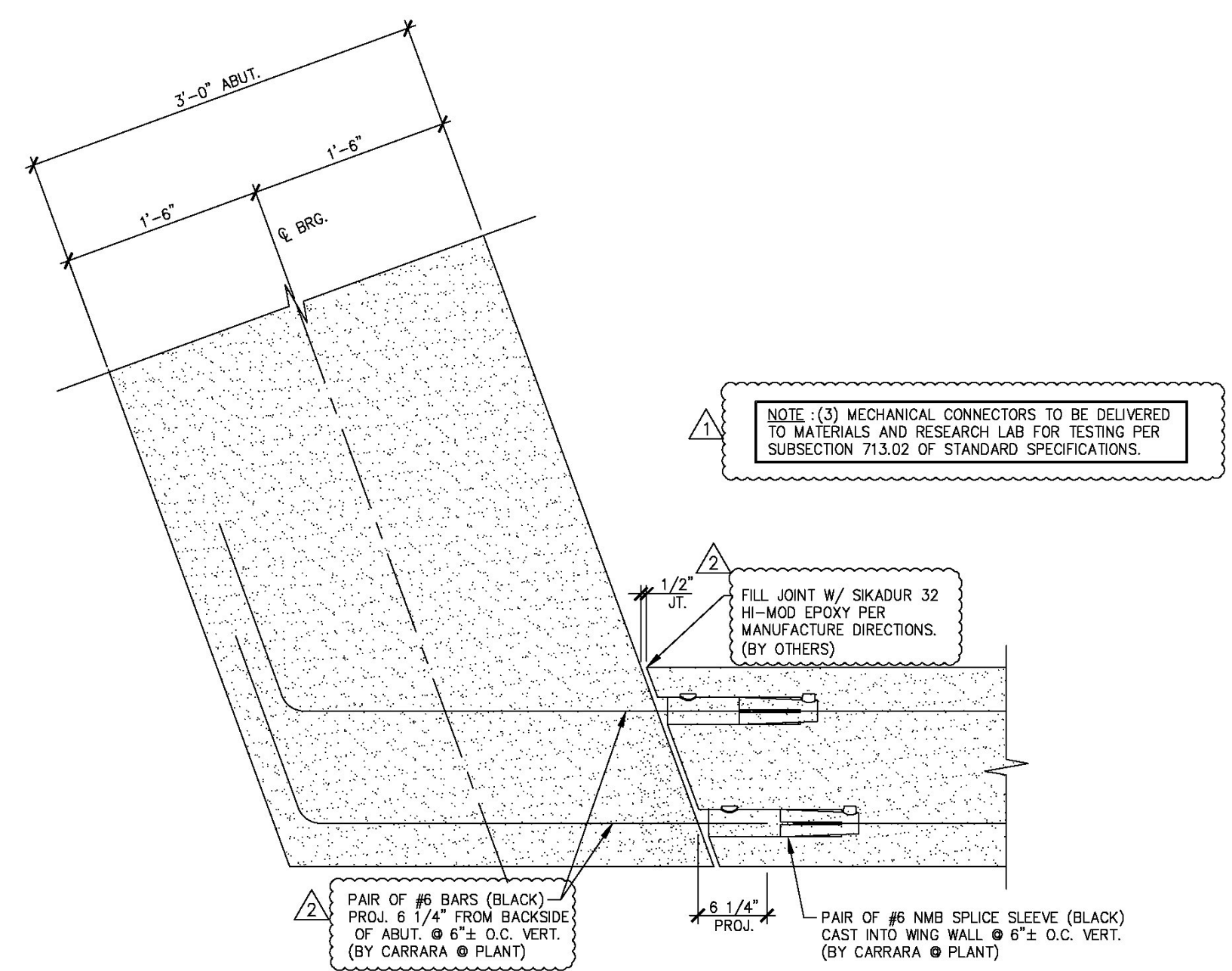
CORRECTIONS OR COMMENTS MADE ON THE SHOP DRAWINGS DURING THIS REVIEW DO NOT RELIEVE CONTRACTOR FROM COMPLIANCE WITH REQUIREMENTS OF THE DRAWINGS AND SPECIFICATIONS. THIS CHECK IS ONLY FOR REVIEW OF GENERAL CONFORMANCE WITH THE DESIGN CONCEPT OF THE PROJECT AND GENERAL COMPLIANCE WITH THE INFORMATION GIVEN IN THE CONTRACT DOCUMENTS. THE CONTRACTOR IS RESPONSIBLE FOR CONFIRMING AND CORRELATING ALL QUANTITIES AND DIMENSIONS, SELECTING FABRICATION PROCESSES AND TECHNIQUES OF CONSTRUCTION, COORDINATING HIS WORK WITH THAT OF ALL OTHER TRADES, AND PERFORMING HIS WORK IN A SAFE AND SATISFACTORY MANNER.

Vanasse Hangen Brustlin, Inc.
7056 US Route 7
North Ferrisburgh, VT 05473
802.425.7788

Job Number: 57427.00
Reviewed By: S.E. Burbank
Date: 06/19/2014



B.1 WING WALL CONNECTION DETAIL
F5 1" = 1'-0"



B.2 WING WALL CONNECTION DETAIL
F5 1" = 1'-0"

4-7-14 REVISED AS NOTED
5-6-14 REVISED AS NOTED

APPROVAL STAMP:		J.P. CARRARA & SONS INC. Precast & Prestress Manufacturer N.T.S. 244 OASE STR. MIDDLEBURY, VERMONT 05753 Phone:(802)388-6361 Fax:(802)388-9010	
STATE OF VERMONT AGENCY OF TRANSPORTATION COUNTY OF WINDHAM		DATE: MAR. 04, 2014	SCALE: NOTED
TOWN OF GUILFORD ROUTE NO. T.H.10, CLASS III (LOCAL ROAD) BRIDGE NO.: 65 PROJECT NO.: BRO 1442 (36)		CHKD: JJ/KLT DFTM:AA1/RWS	JOB NO: 23420-014
ABUTMENT DETAILS		DWG. NO:	F5

Eriksson technologies
813.989.3317
TAMPA, FL LRFD.COM
© 2014 ERIKSSON TECHNOLOGIES, INC. ALL RIGHTS RESERVED