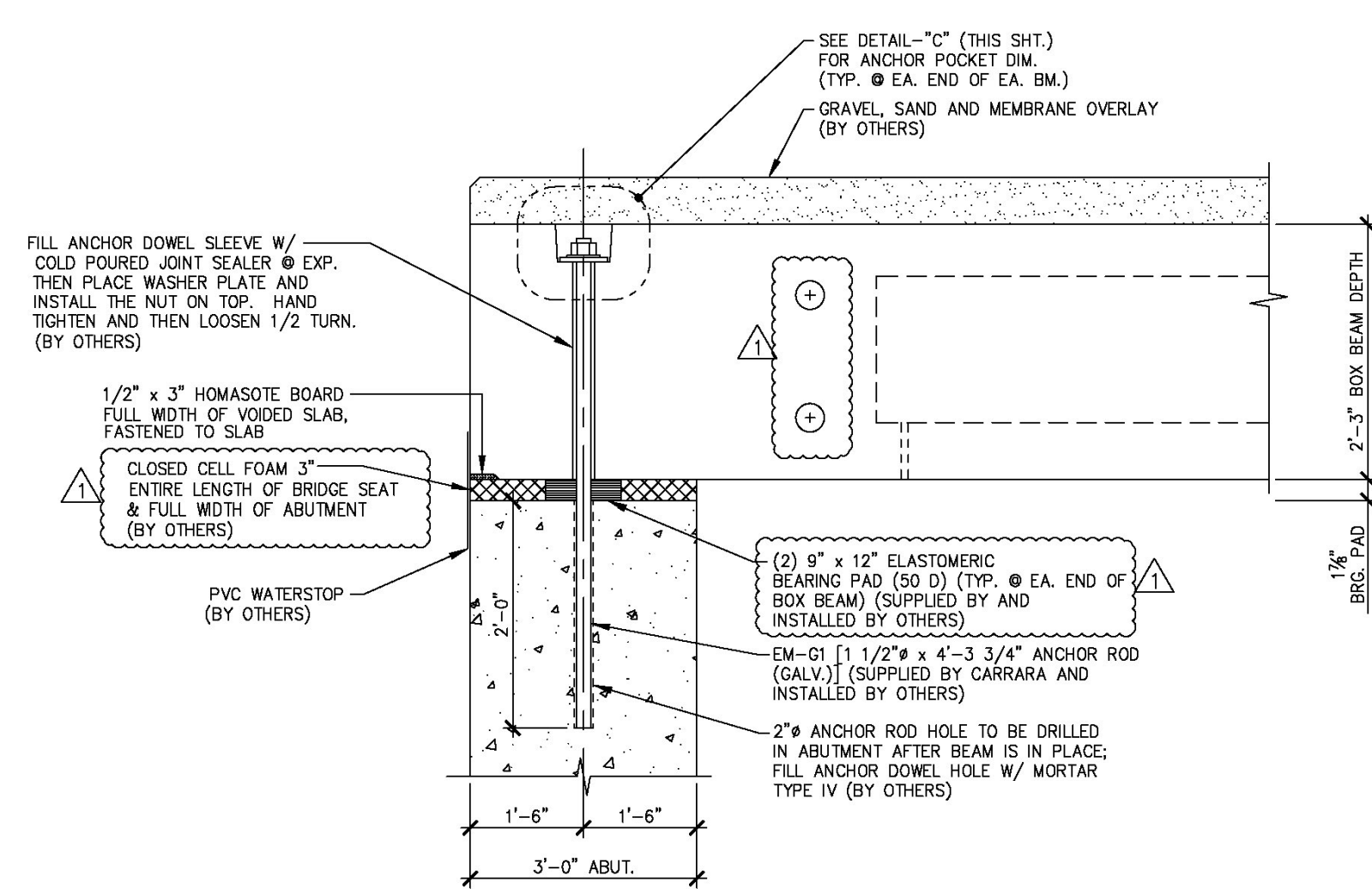
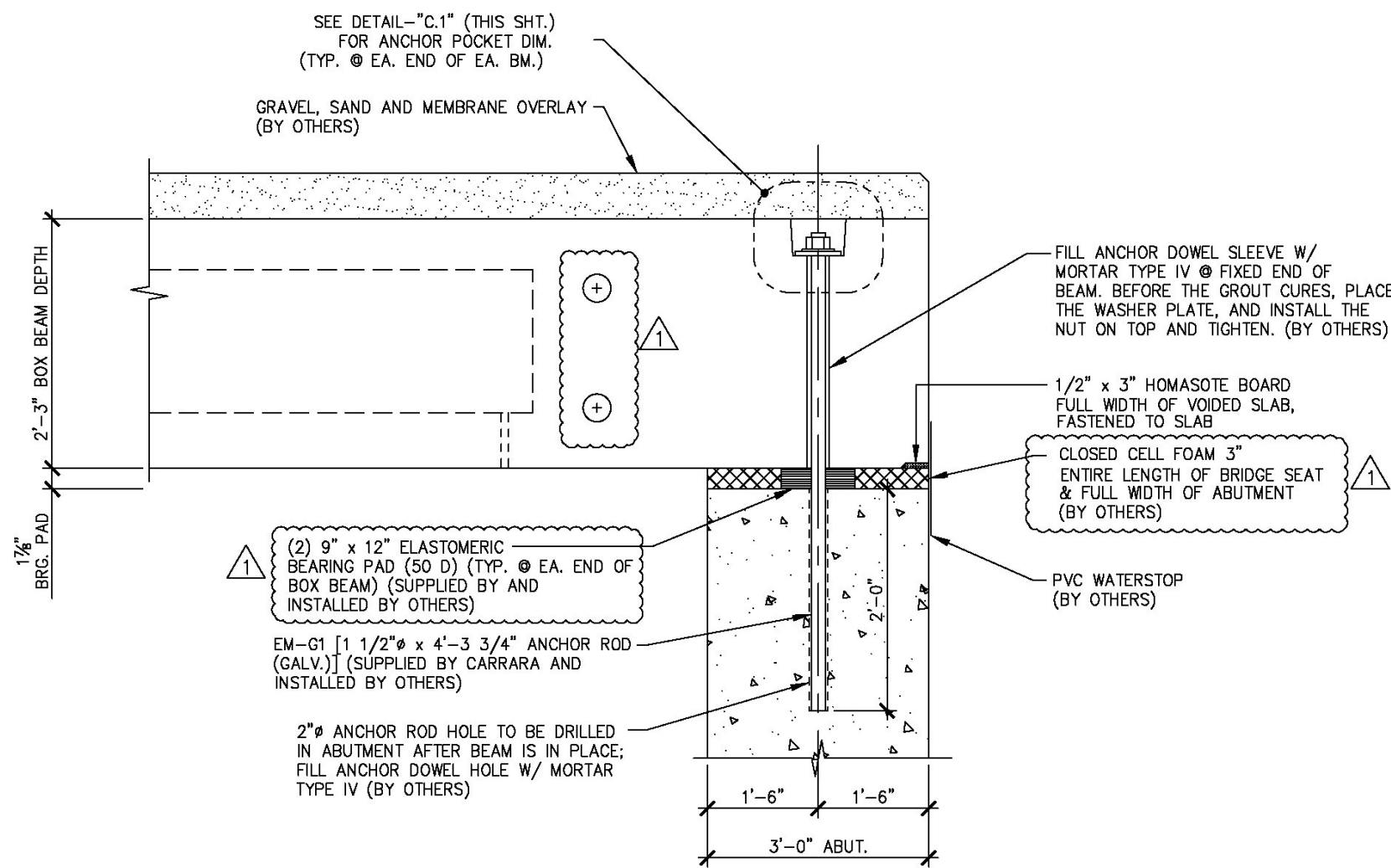


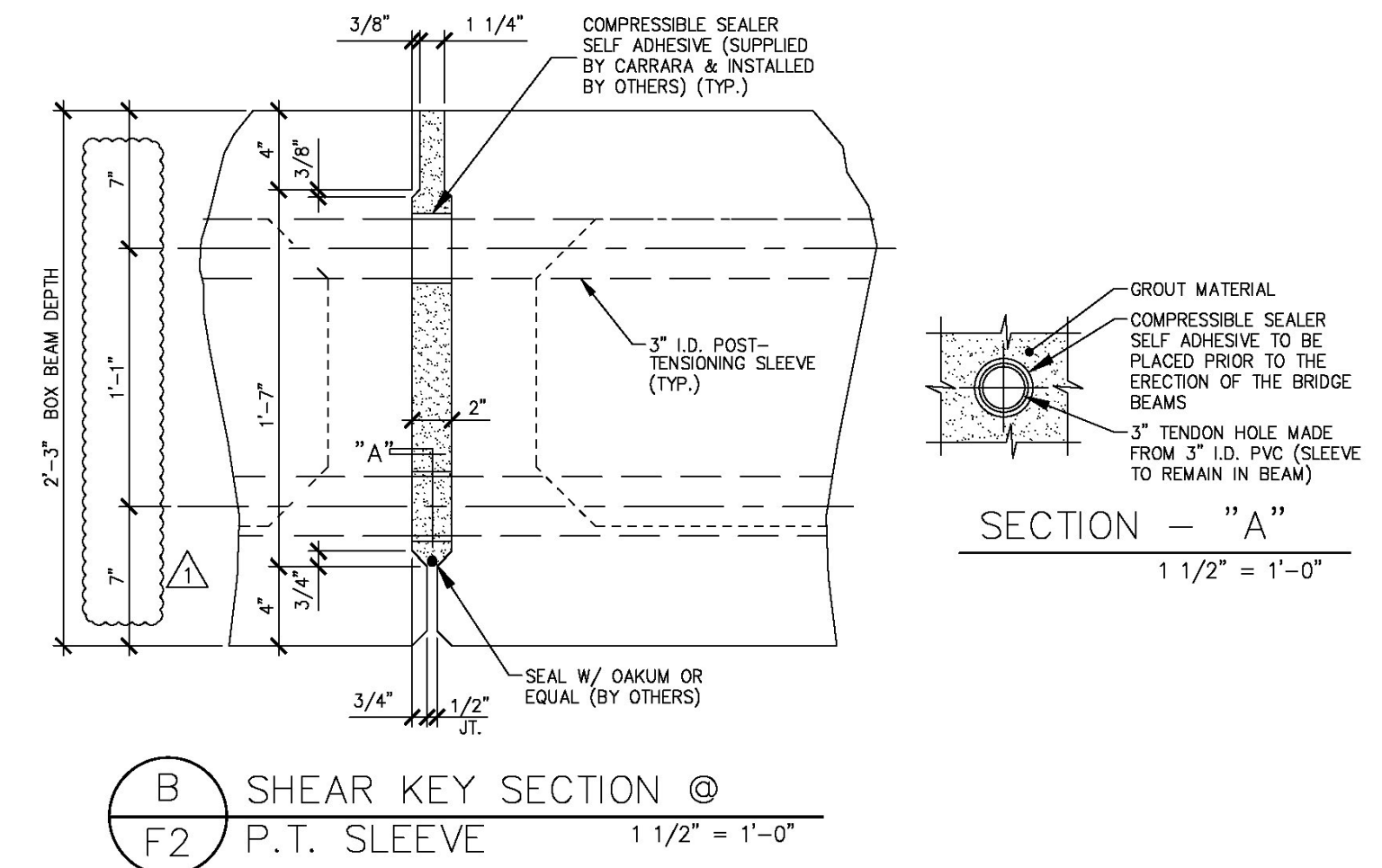
S:\Engineering Services\Carrara\116001 - Guilford Bridge 651\Production Drawings\AutoCAD Files\1441236-F1.dwg, 5/6/2014 4:44:16 PM, DWG To PDF.pc3



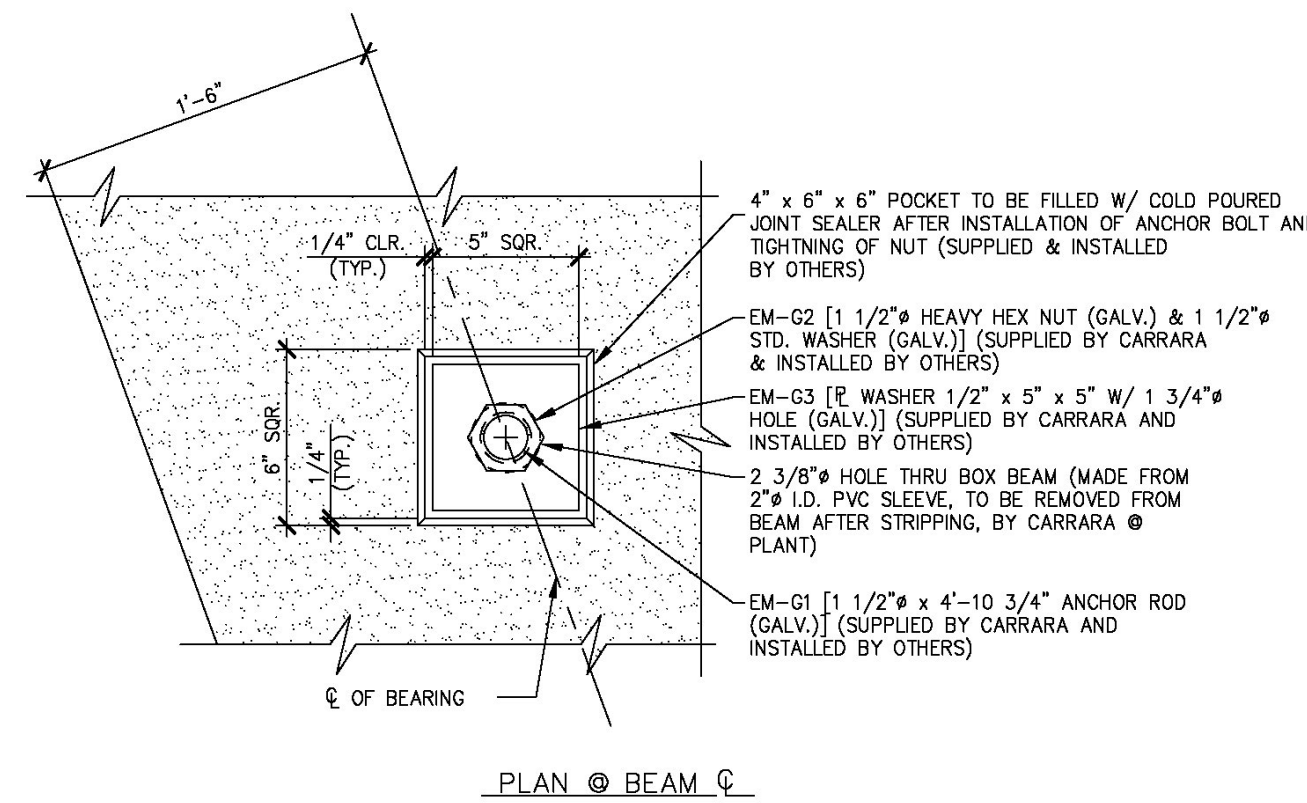
A BEARING SECTION
F2 (EXP. END) 3/4" = 1'-0"



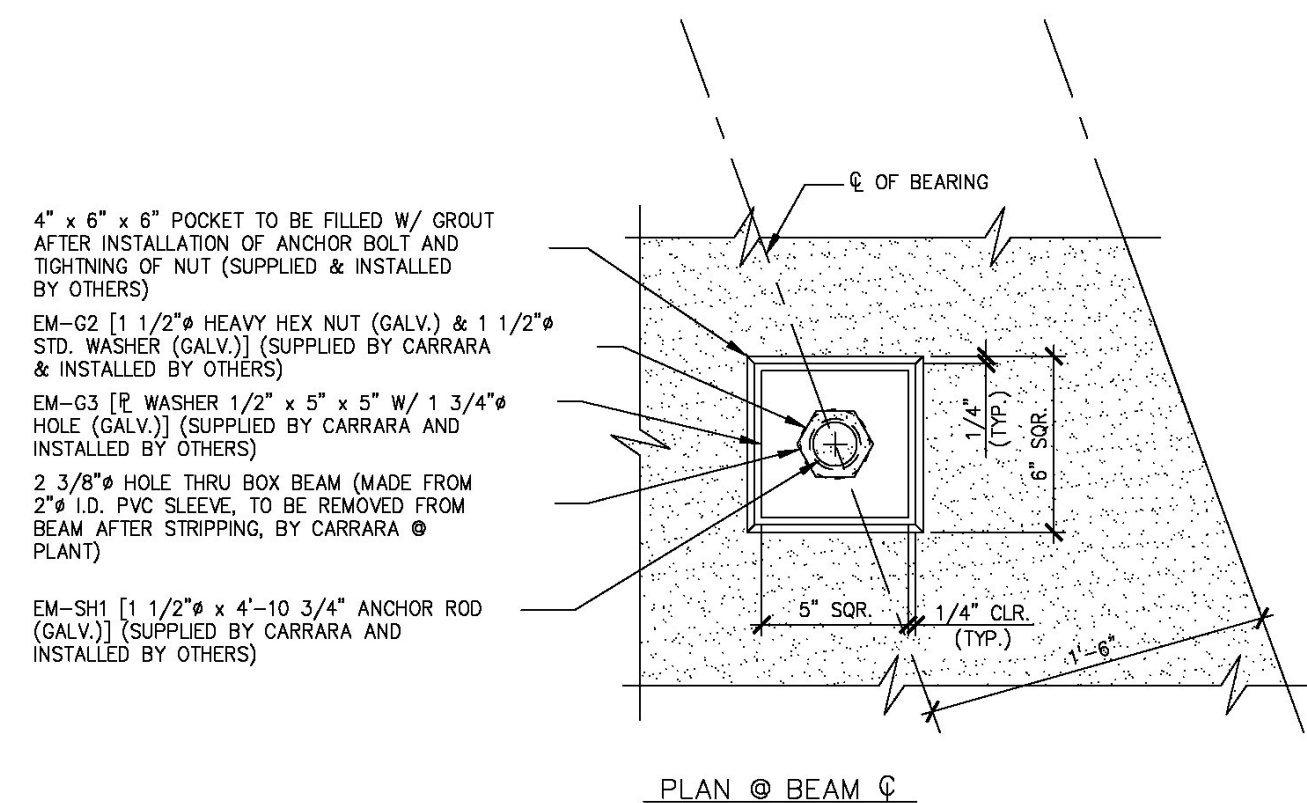
A.1 BEARING SECTION
F2 (FIXED END) 3/4" = 1'-0"



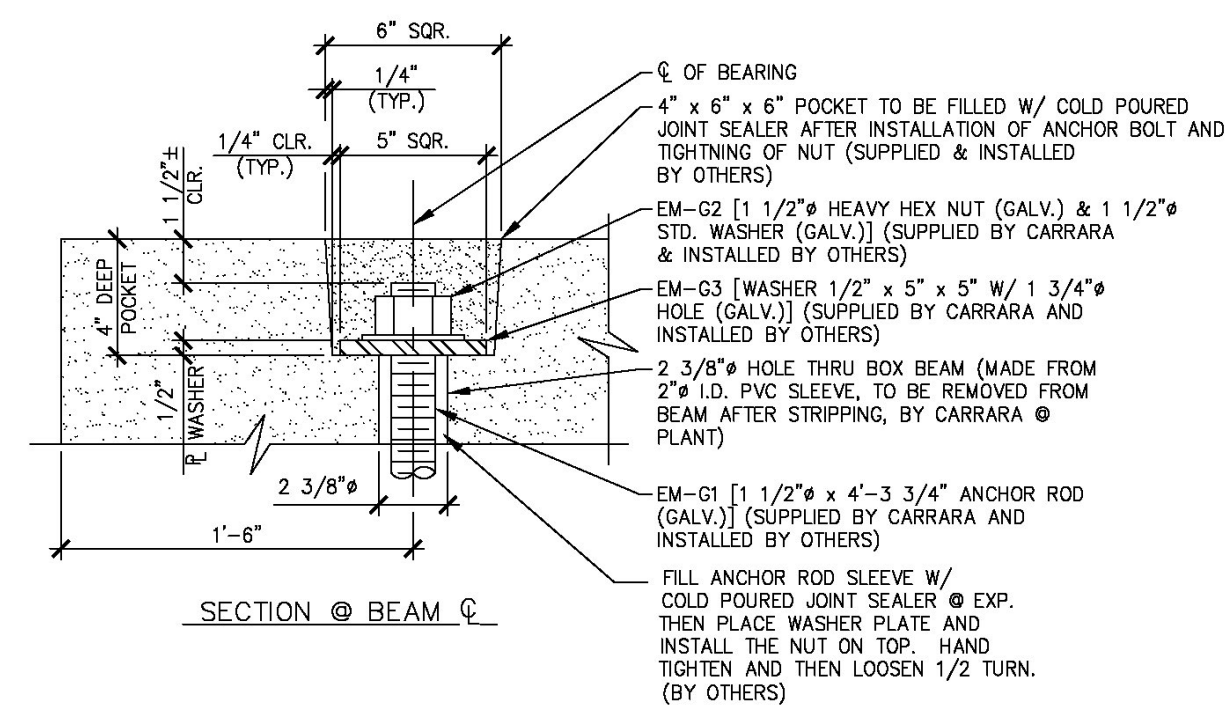
B SHEAR KEY SECTION @
F2 P.T. SLEEVE 1 1/2" = 1'-0"



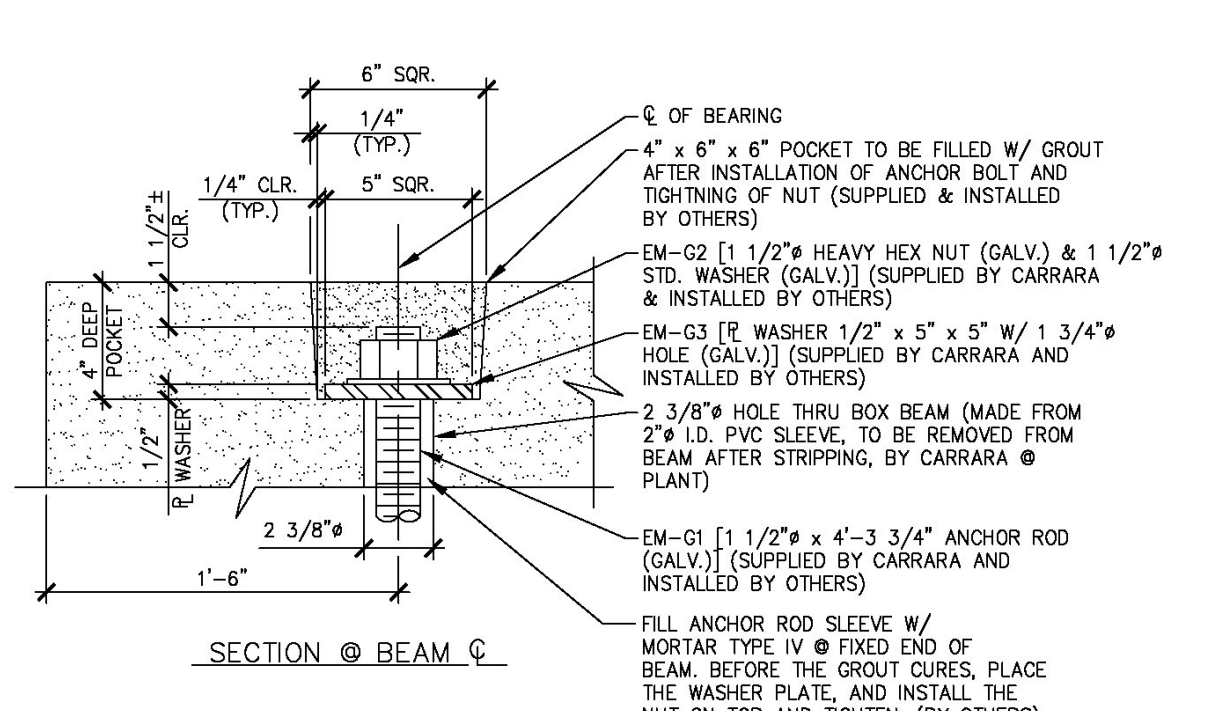
PLAN @ BEAM C



PLAN @ BEAM C.1



SECTION @ BEAM C



SECTION @ BEAM C.1

DETAIL - "C"
2" = 1'-0"

DETAIL - "C.1"
2" = 1'-0"

Vermont Agency of Transportation
RECEIVED
CK'D BY MJC OK'D BY TAS
June 18, 2014
RESUBMIT No Approved
BY M. J. Chenette DATE 06/19/2014

SHOP DRAWING REVIEW

REVIEWED AS REQUIRED BY THE CONSTRUCTION CONTRACT DOCUMENTS AND APPROVED, BUT ONLY FOR CONFORMANCE TO THE DESIGN CONCEPT OF THE WORK, AND SUBJECT TO FURTHER LIMITATIONS AND REQUIREMENTS CONTAINED IN THE CONSTRUCTION CONTRACT DOCUMENTS

REJECTED REVISE AND RESUBMIT FURNISH AS CORRECTED

CORRECTIONS OR COMMENTS MADE ON THE SHOP DRAWINGS DURING THIS REVIEW DO NOT RELIEVE CONTRACTOR FROM COMPLIANCE WITH REQUIREMENTS OF THE DRAWINGS AND SPECIFICATIONS. THIS CHECK IS ONLY FOR REVIEW OF GENERAL CONFORMANCE WITH THE DESIGN CONCEPT OF THE PROJECT AND GENERAL COMPLIANCE WITH THE INFORMATION GIVEN IN THE CONTRACT DOCUMENTS. THE CONTRACTOR IS RESPONSIBLE FOR CONFIRMING AND CORRELATING ALL QUANTITIES AND DIMENSIONS, SELECTING FABRICATION PROCESSES AND TECHNIQUES OF CONSTRUCTION, COORDINATING HIS WORK WITH THAT OF ALL OTHER TRADES, AND PERFORMING HIS WORK IN A SAFE AND SATISFACTORY MANNER.

Vanasse Hangen Brustlin, Inc.
7056 US Route 7
North Ferrisburgh, VT 05473
802-425-7789

Job Number: 57427.00
Reviewed By: S.E. Burbank
Date: 06/19/2014



NOTE: BEAM SHALL BE HANDLED AND ERECTED USING THE LIFTING LOOPS ONLY. RIGGING SHALL BE CONFIGURED SUCH THAT EQUAL FORCES ARE APPLIED TO EACH SET OF LIFTING LOOPS AT EACH END OF THE BEAM. SHACKLE BOLT/PIN SHALL BE PLACED UNDER LIFT LOOPS AS SHOWN. DESIGN AND CONFIGURATION OF RIGGING BY PURCHASER.

LIFTING SHACKLE DETAILS

NOTE: DUNNAGE SHALL BE PLACED UNDER BEAMS AT LOCATION OF LIFT LOOPS FOR STORAGE & SHIPPING.

4-7-14 REVISED AS NOTED

APPROVAL STAMP:	J.P. CARRARA & SONS INC. Precast & Prestress Manufacturer N.T.S. 244 OASE STR. MIDDLEBURY, VERMONT 05753 Phone:(802)388-6361 Fax:(802)388-9010
STATE OF VERMONT AGENCY OF TRANSPORTATION COUNTY OF WINDHAM	DATE: MAR. 04, 2014 SCALE: NOTED
TOWN OF GUILFORD ROUTE NO. T.H.10, CLASS III (LOCAL ROAD) BRIDGE NO.: 65 PROJECT NO.: BRO 1442 (36)	CHKD: JJ/KLT DFTM:AA1/RWS JOB NO: 23420-014
SUPERSTRUCTURE PLANS	DWG. NO: F3

Eriksson technologies
813.989.3317
TAMPA, FL LRFD.COM
© 2014 ERIKSSON TECHNOLOGIES, INC. ALL RIGHTS RESERVED