

FASCIA MOUNTED WITH CURB

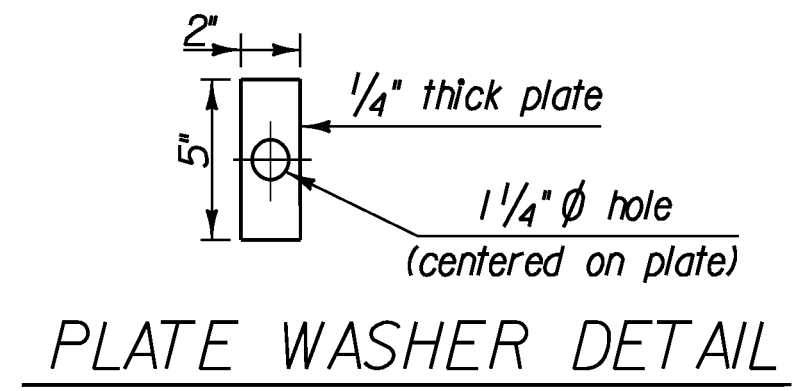
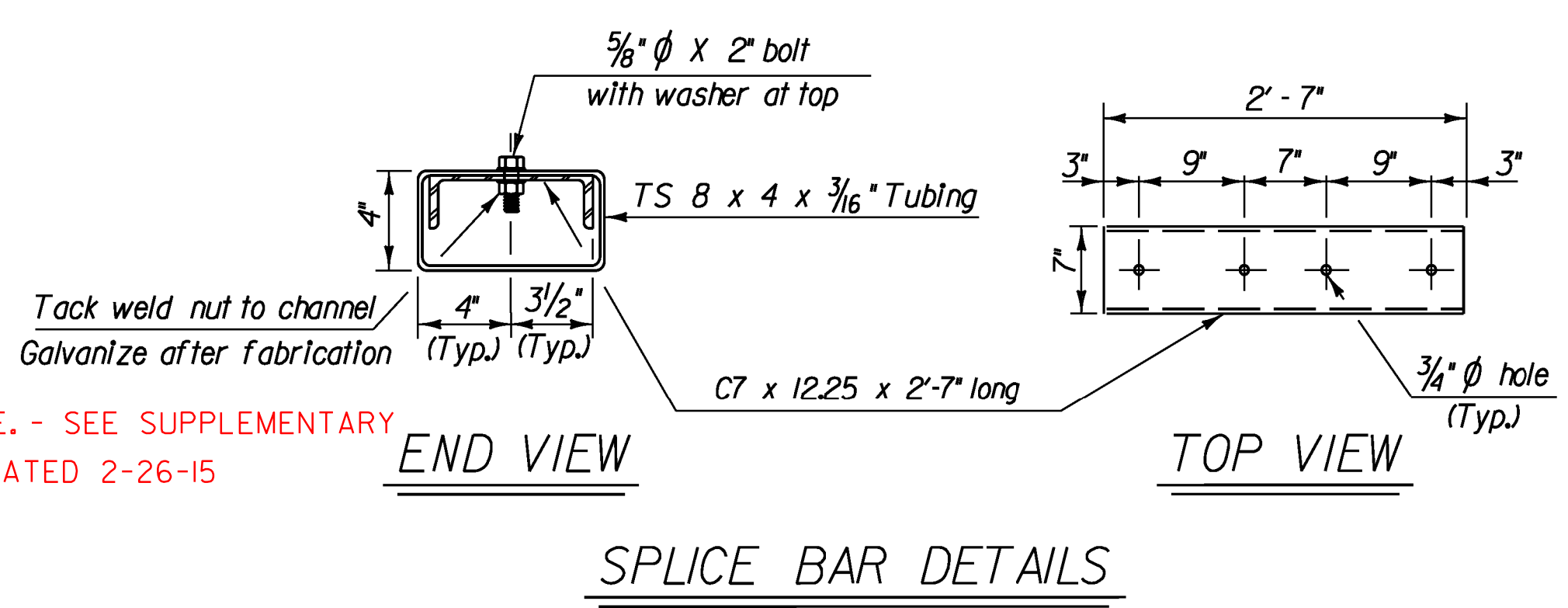
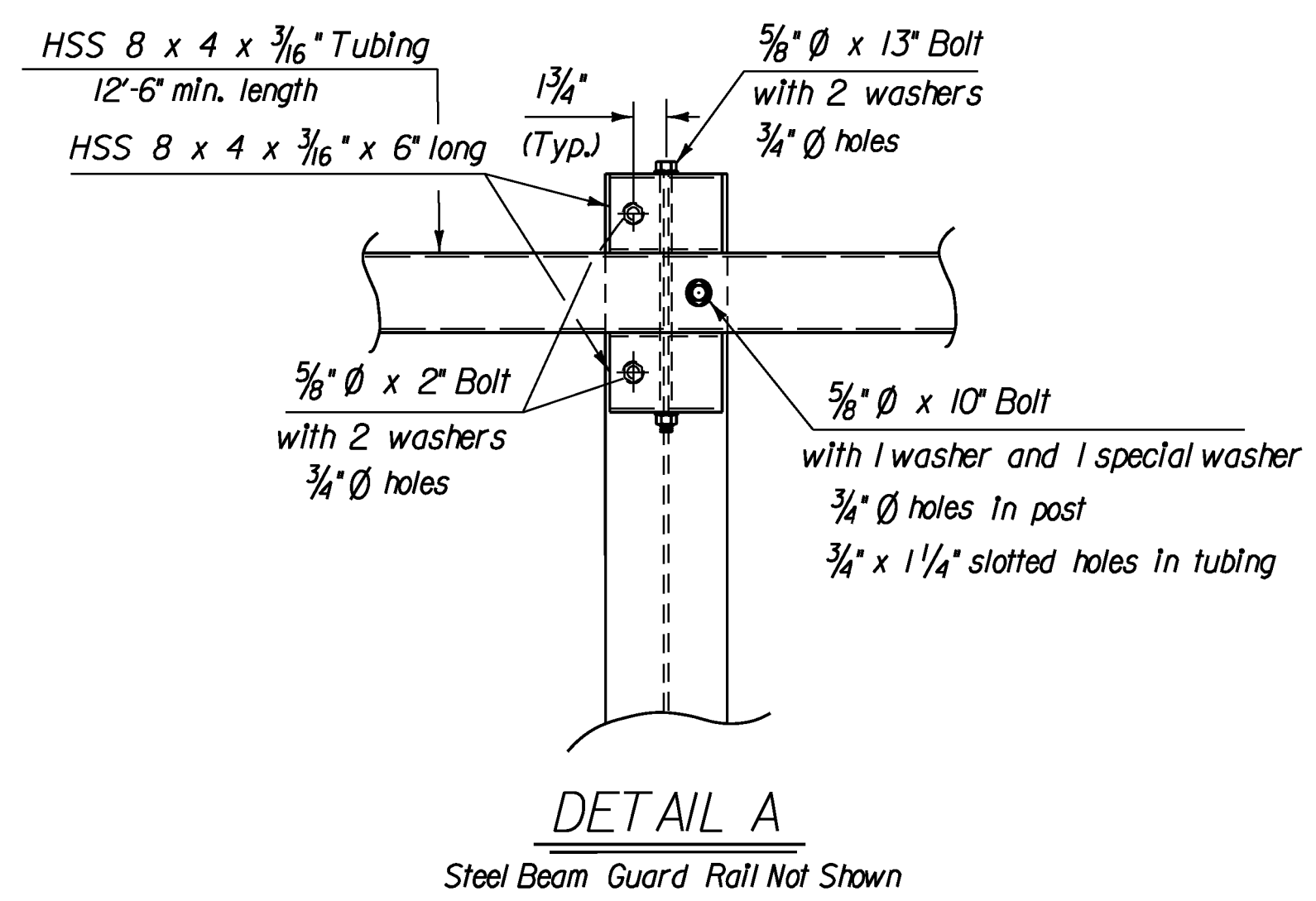


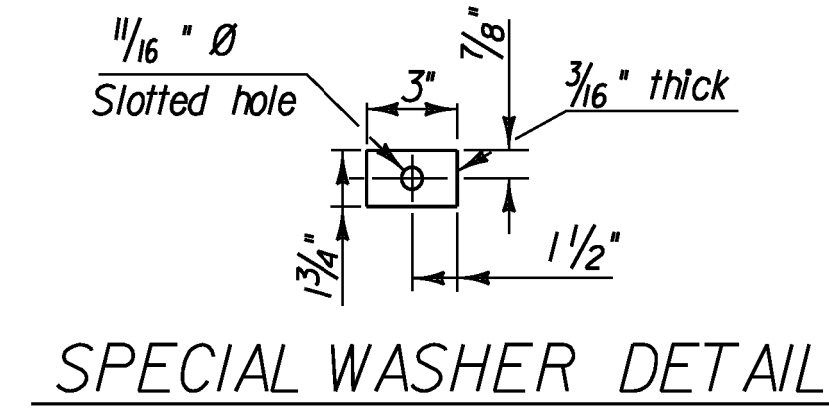
PLATE WASHER DETAIL



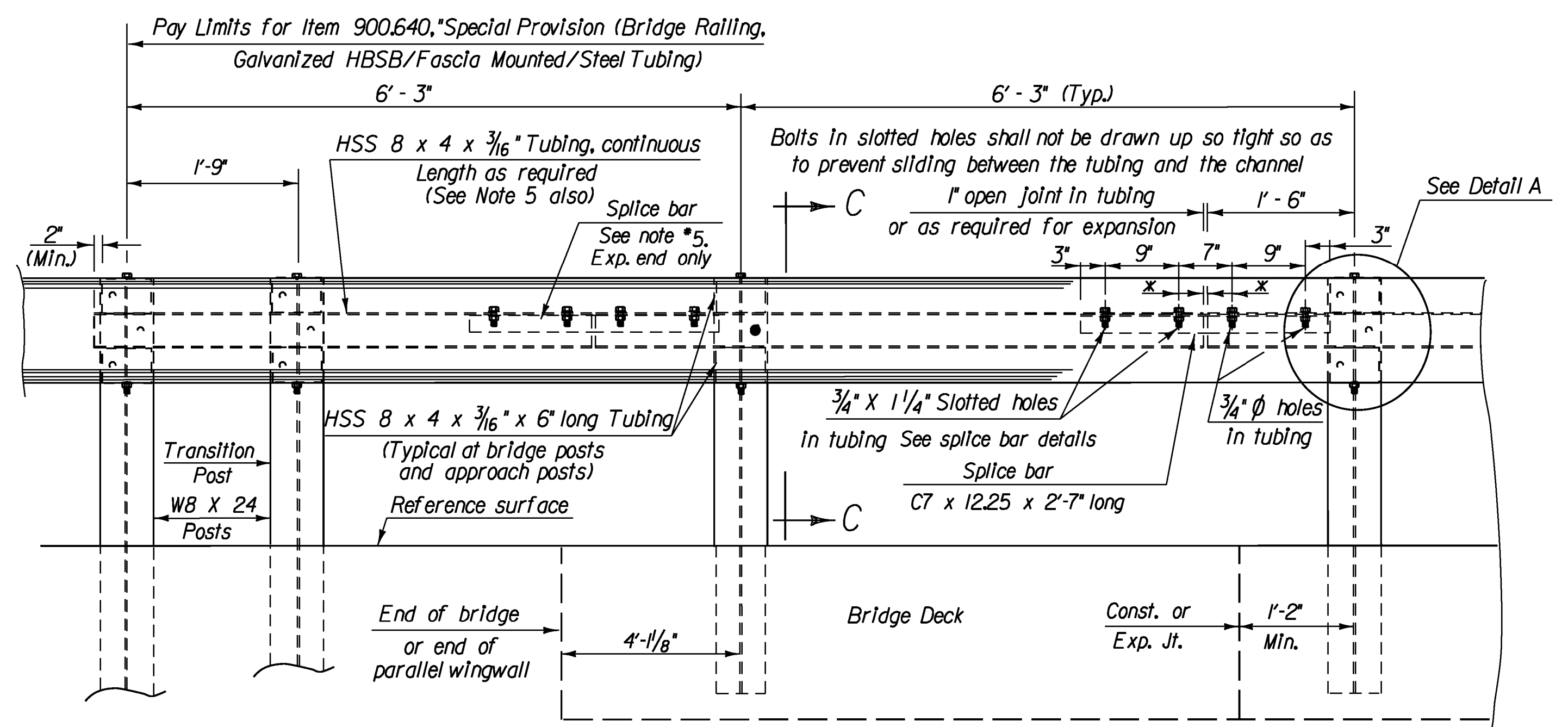
SPLICE BAR DETAILS



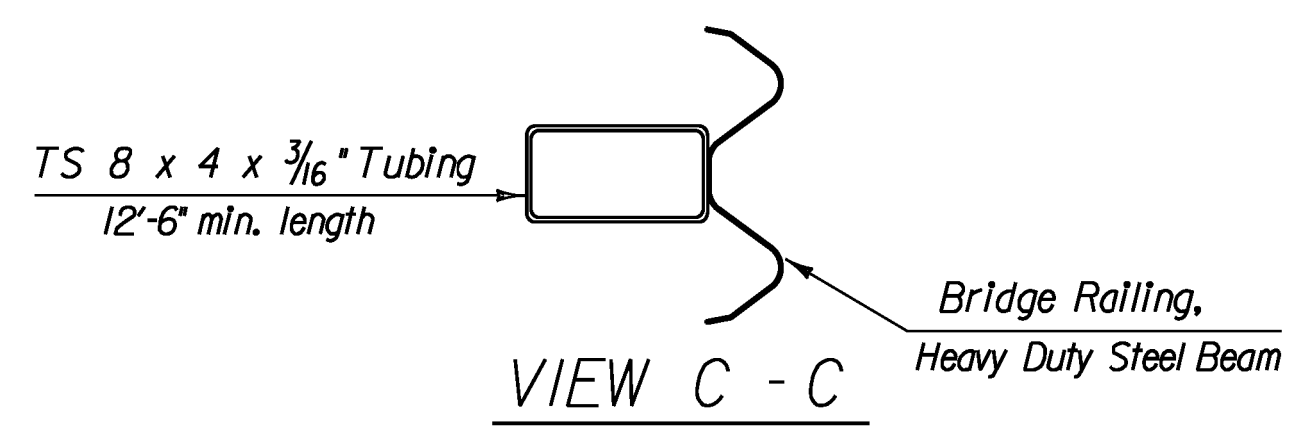
DETAIL A  
Steel Beam Guard Rail Not Shown



SPECIAL WASHER DETAIL



RAILING ELEVATION VIEW  
(SHOWN LOOKING FROM Q WITHOUT CURB)



VIEW C - C

NOTES

1. ALL WORK AND MATERIALS SHALL CONFORM TO SECTION 525.
2. PRIOR TO GALVANIZING THE ASSEMBLED POST, GRIND ALL EDGES TO A MINIMUM RADIUS OF 1/16 IN.
3. ALL POSTS SHALL BE SET NORMAL TO GRADE.
4. SPLICES FOR THE STEEL BEAM GUARDRAIL SHALL LAP IN THE DIRECTION OF TRAFFIC.
5. A RAILING JOINT SPLICE SHALL BE PROVIDED IN ANY RAIL BAY SPANNING THE END OF AN INTEGRAL ABUTMENT BRIDGE AND AT ALL SUPERSTRUCTURE EXPANSION JOINTS.
6. SEE STANDARD DRAWING G-1 FOR DETAILS OF DELINEATORS. A DELINEATOR SHALL BE LOCATED AT EVERY FIFTH POST. WHITE IS TO BE INSTALLED ON THE DRIVER'S RIGHT. FOR ONE WAY BRIDGES, YELLOW IS TO BE INSTALLED ON THE DRIVER'S LEFT.
7. FOR RADII LESS THAN 950 FEET, HSS 8x4 TUBES SHALL BE SHOP BENT TO FIT THE APPLICABLE CURVE.
8. HOLES IN RAIL FOR RAIL TUBE ATTACHMENT MAY BE FIELD DRILLED. HOLES SHALL BE COATED WITH AN APPROVED ZINC-RICH PAINT PRIOR TO INSTALLATION.
9. SEE STANDARD G-1 AND G-1d FOR ADDITIONAL DETAILS CONCERNING GUARDRAIL.

PROJECT NAME: GUILFORD	PLOT DATE: 10/2/2013
PROJECT NUMBER: BRO 1442(36)	DRAWN BY: E.A. FIALA
FILE NAME: z10j064brail.dgn	CHECKED BY: S.E. BURBANK
PROJECT LEADER: S.E. BURBANK	SHEET 29 OF 42
DESIGNED BY: VTRANS/VHB	
BRIDGE RAIL DETAILS	