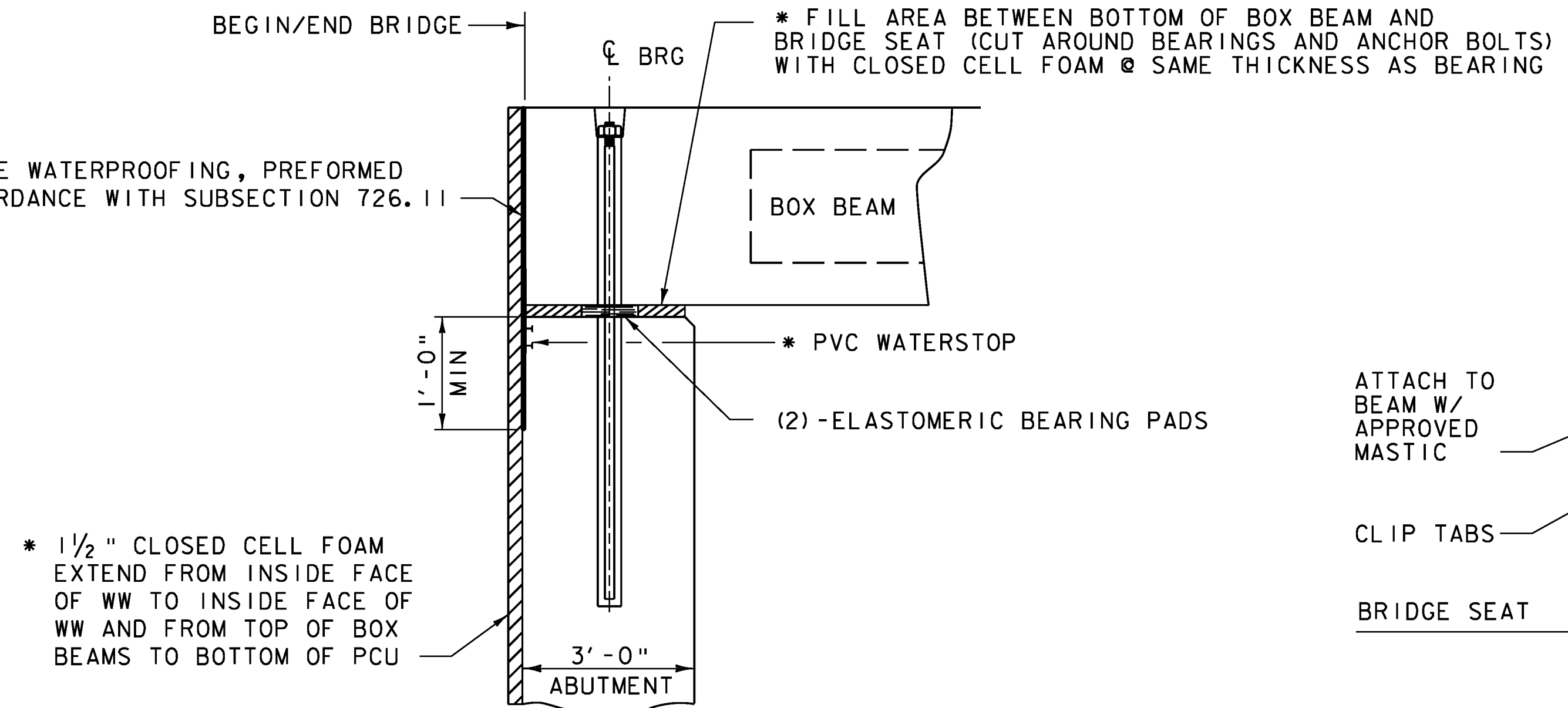
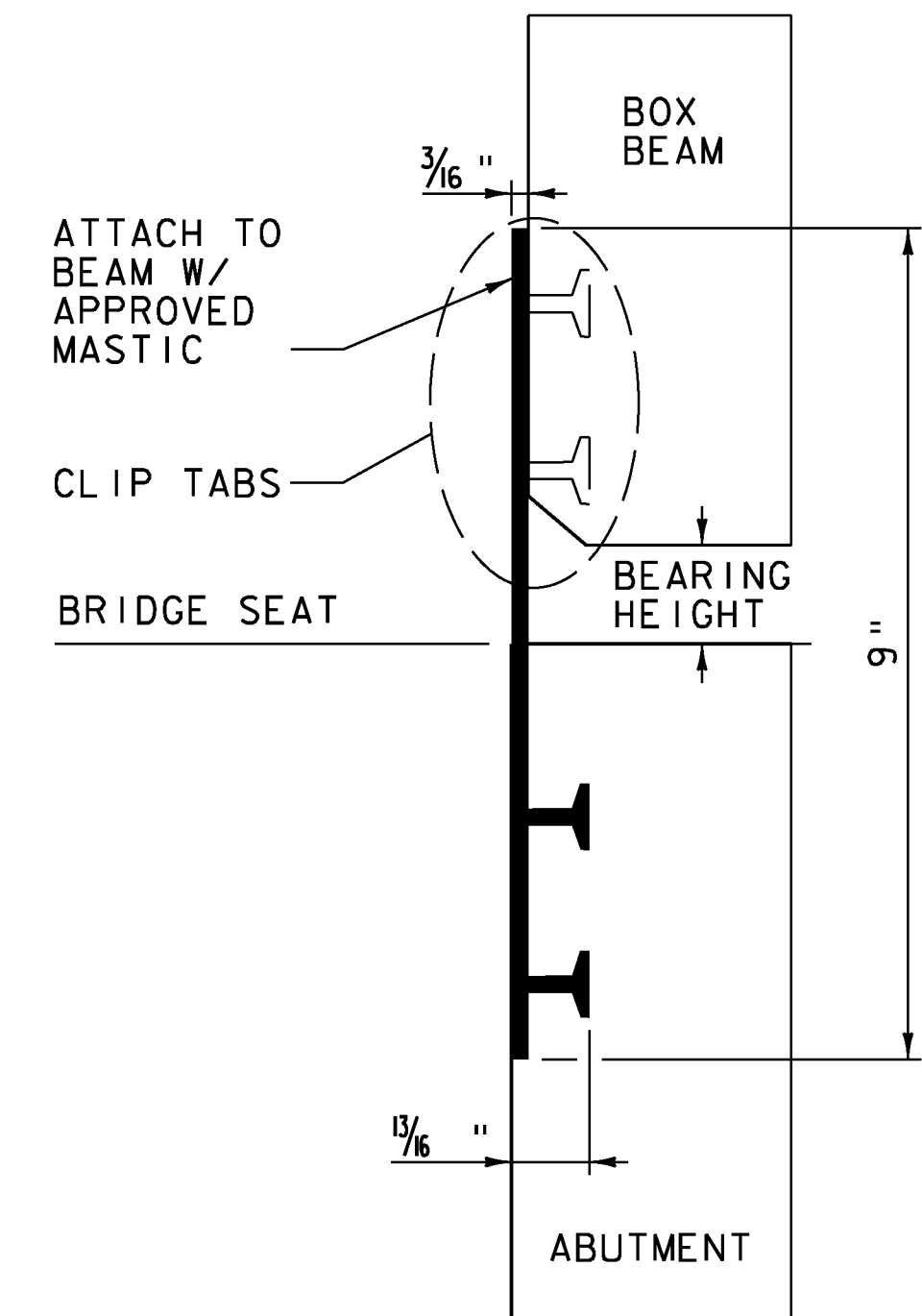


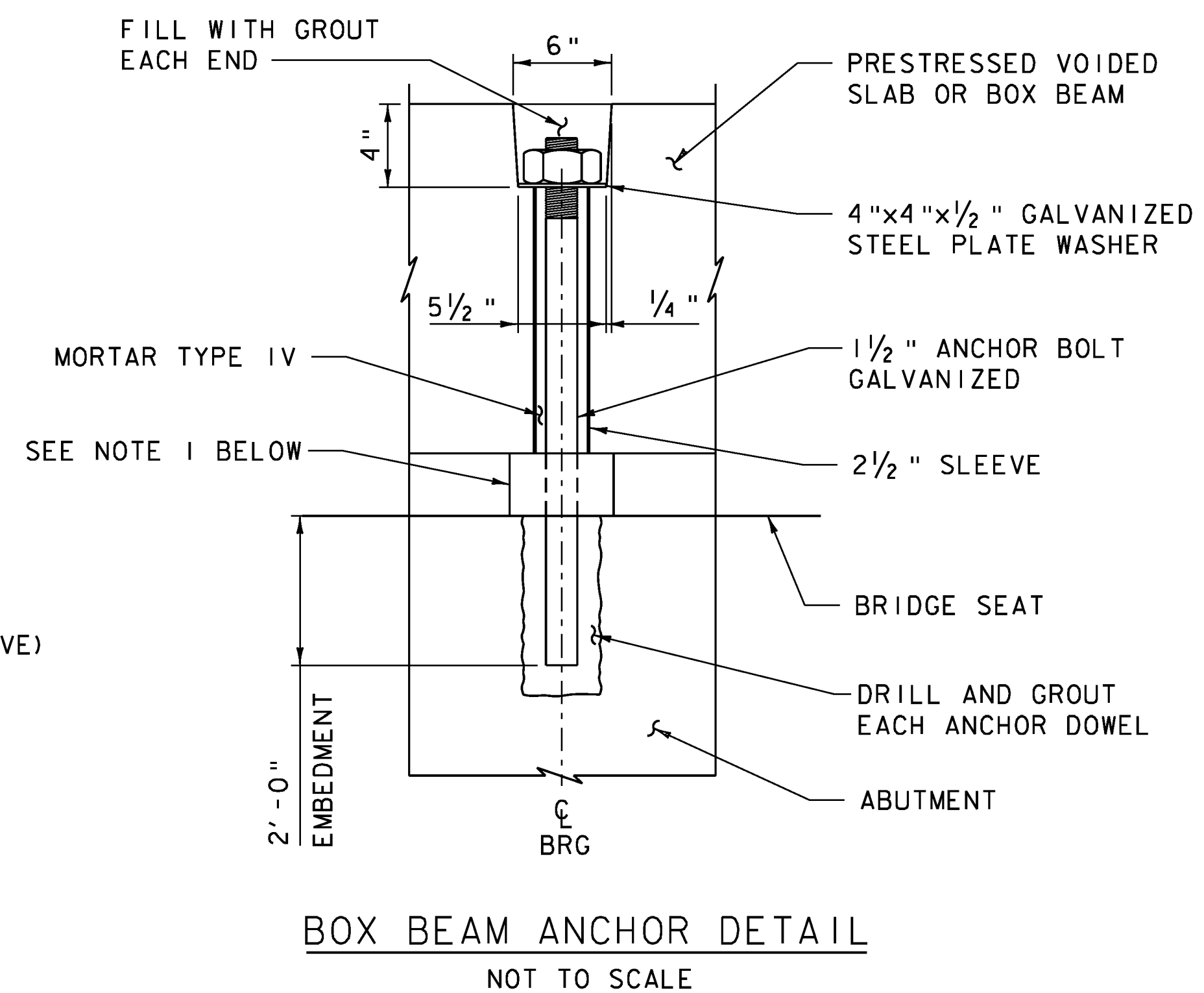
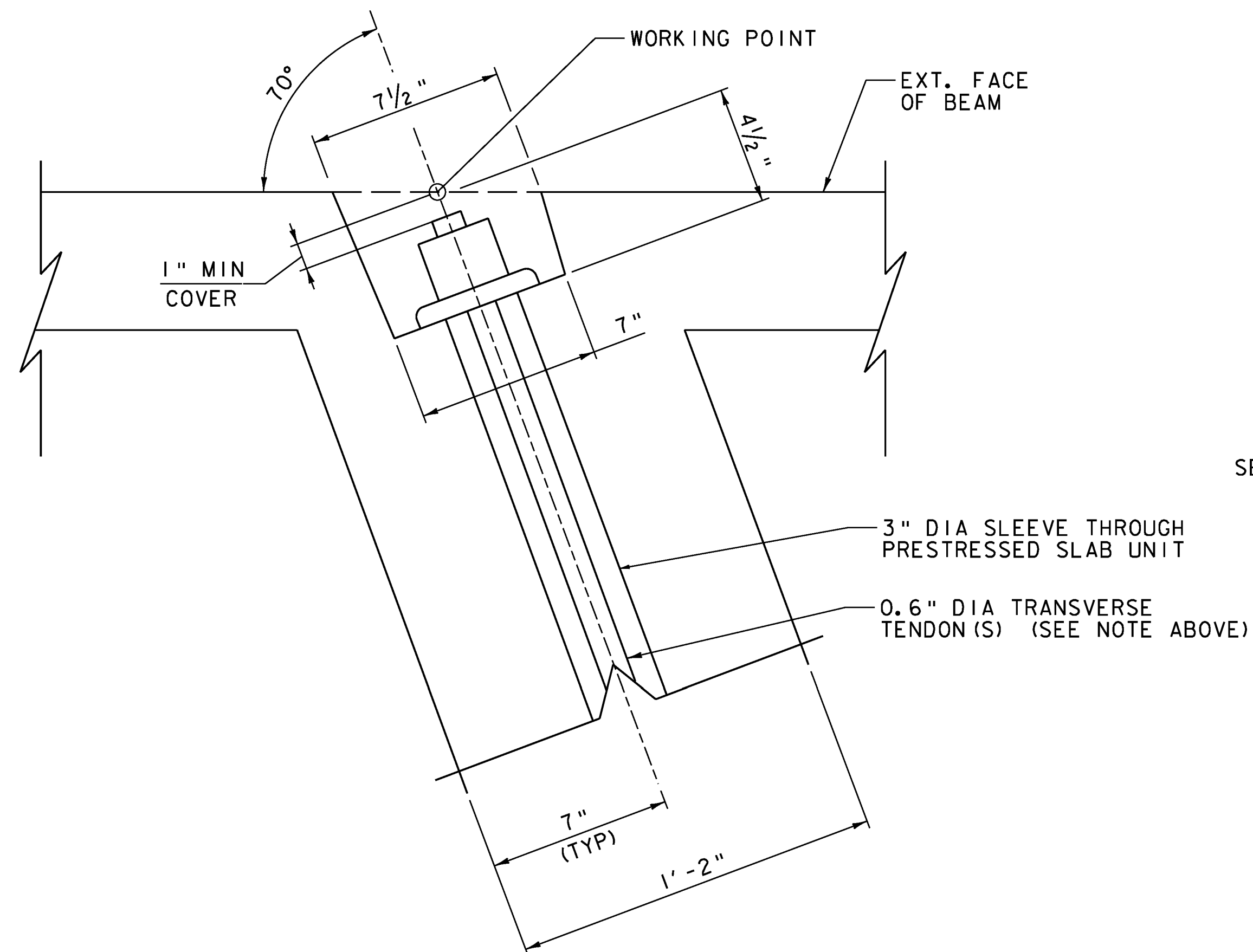
* TRANSVERSE TIES SHALL BE COVERED BY SEAMLESS POLYPROPYLENE SHEATH (WITH CORROSION INHIBITER GREASE BETWEEN SHEATH AND STRAND) FOR THE LENGTH OF STRAND, EXCEPT AT ANCHORAGE LOCATIONS. EACH TIE IS COMPRISED OF A SINGULAR OR MULTIPLE STRAND TENDON. EACH TRANSVERSE STRAND SHALL BE TENSIONED TO 47 KIPS. TENDONS SHALL CONSIST OF 1 STRAND TOP AND BOTTOM AT END DIAPHRAGM LOCATIONS AND 2 STRANDS TOP AND BOTTOM AT THE INTERMEDIATE DIAPHRAGM LOCATION. REFER TO THE PRESTRESSED BOX BEAM NOTES FOR STRAND MATERIAL PROPERTIES.



* THESE ITEMS SHALL BE INCIDENTAL TO THE APPROPRIATE PRECAST CONCRETE ITEM 540.10 "PRECAST CONCRETE STRUCTURE (ABUTMENT NO. 1)" OR "PRECAST CONCRETE STRUCTURE (ABUTMENT NO. 2)"



NOTE: PVC WATERSTOP SHALL BE ONE CONTINUOUS STRIP.



- CONTRACTOR SHALL SUPPLY A SELF ADHESIVE COMPRESSIBLE SEALER BETWEEN THE BOTTOM OF THE UNITS AND THE BRIDGE SEAT. THIS COMPRESSIBLE SEALER SHALL SURROUND THE 2 1/2" DIA SLEEVE IN THE UNIT. THE PURPOSE OF THE SEALER IS TO FACILITATE PLACEMENT OF THE GROUT AROUND THE ANCHOR BOLTS.
- GROUT ANCHOR BOLTS INTO THE SLEEVES. BEFORE THE GROUT CURES, PLACE THE WASHER PLATE AND INSTALL THE NUT ON TOP AND TIGHTEN.

VHB Vanasse Hangen Brustlin, Inc.

PROJECT NAME: GUILFORD
PROJECT NUMBER: BRO 1442(36)

FILE NAME: z10j064sup3.dgn
PROJECT LEADER: S.E. BURBANK
DESIGNED BY: G.H. NEAL
BOX BEAM DETAILS (2 OF 2)

PLOT DATE: 10/2/2013
DRAWN BY: J.L. LEMIEUX
CHECKED BY: A.F. PREZIOSO
SHEET 22 OF 42