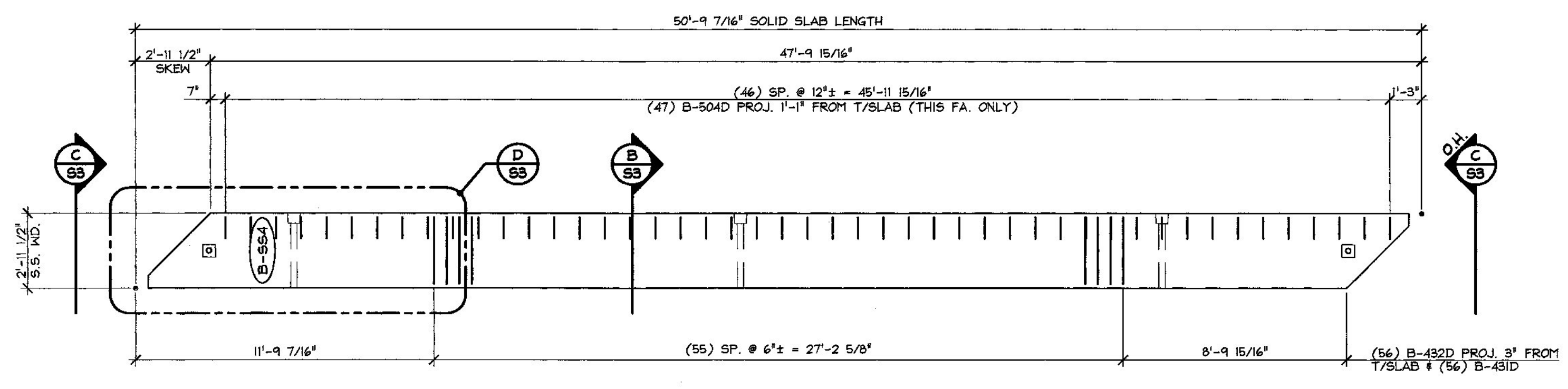


1 DIMENSIONAL PLAN VIEW IN FORM
S3
1/4" = 1'-0"



2 REINFORCING PLAN VIEW IN FORM
S3
1/4" = 1'-0"

SHOP NOTE:
ADJUST REINFORCING AS REQUIRED
TO CLEAR INSERTS, SLEEVES, ETC.

Vermont Agency of Transportation
RECEIVED

CK'D BY MJC OK'D BY TAS

April 24, 2014

RESUBMIT No Approved AsNoted
BY M. J. Chenette DATE 04/29/2014

SHOP DRAWING REVIEW

REVIEWED AS REQUIRED BY THE CONSTRUCTION CONTRACT DOCUMENTS AND APPROVED, BUT ONLY FOR CONFORMANCE TO THE DESIGN CONCEPT OF THE WORK, AND SUBJECT TO FURTHER LIMITATIONS AND REQUIREMENTS CONTAINED IN THE CONSTRUCTION CONTRACT DOCUMENTS.

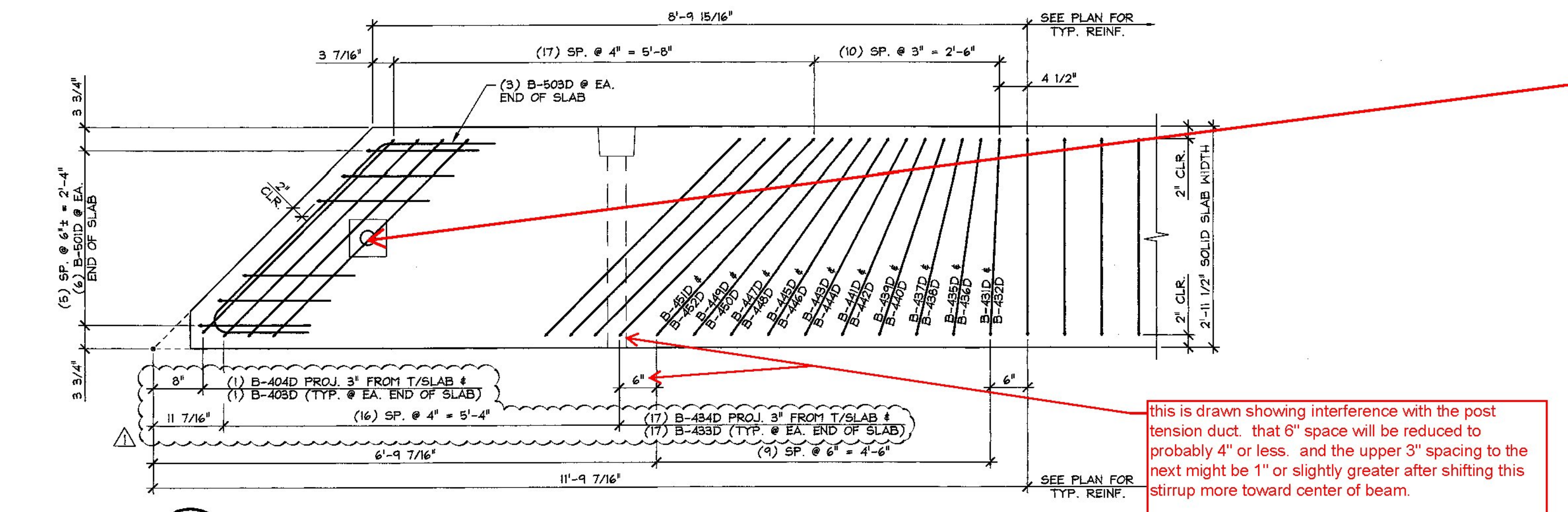
REJECTED REVISE AND RESUBMIT FURNISH AS CORRECTED

CORRECTIONS OR COMMENTS MADE ON THE SHOP DRAWINGS DURING THIS REVIEW DO NOT RELIEVE CONTRACTOR FROM COMPLIANCE WITH REQUIREMENTS OF THE DRAWINGS AND SPECIFICATIONS. THIS CHECK IS ONLY FOR REVIEW OF GENERAL CONFORMANCE WITH THE DESIGN CONCEPT OF THE PROJECT AND GENERAL COMPLIANCE WITH THE INFORMATION GIVEN IN THE CONTRACT DOCUMENTS. THE CONTRACTOR IS RESPONSIBLE FOR CONFIRMING AND CORRELATING ALL QUANTITIES AND DIMENSIONS; SELECTING FABRICATION PROCESSES AND TECHNIQUES OF CONSTRUCTION; COORDINATING HIS WORK WITH THAT OF ALL OTHER TRADES; AND PERFORMING HIS WORK IN A SAFE AND SATISFACTORY MANNER.

VHB Vanasse Hangen Brustlin, Inc. Job Number: 57528.00
7056 US Route 7 North Ferrisburgh, VT 05473 Reviewed By: E.A. FIALA
802.425.7798 Date: 04/28/2014

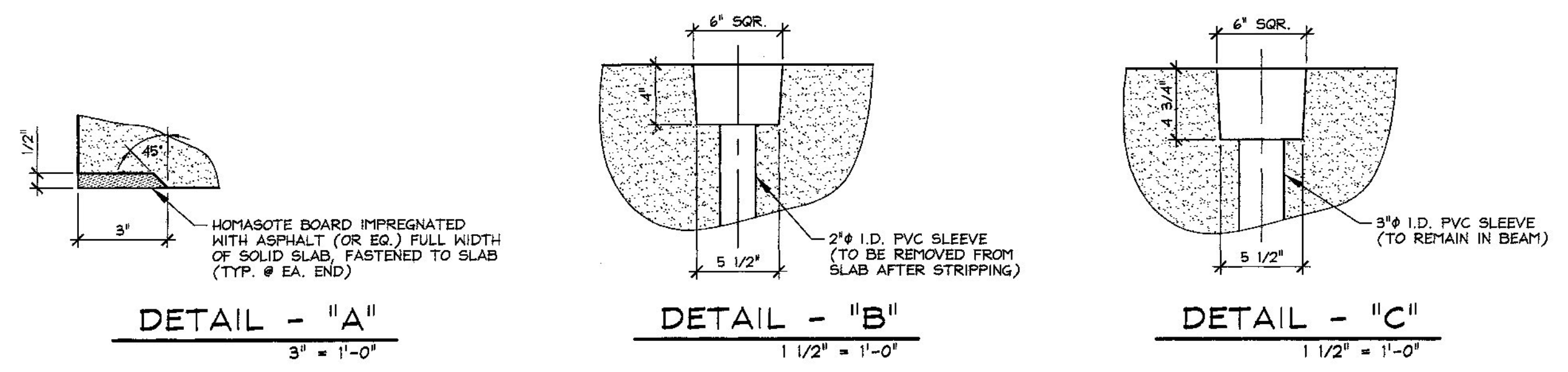
MARK:	B-SS4	QTY.:	1	WT.:	13.1 T	VOL.:	6.5 cy
MARK:	-	QTY.:	-	WT.:	-	VOL.:	-

MATERIAL LIST / SOLID SLAB			
ITEM	MARK	DESCRIPTION	QTY./SLAB
1	B-409D	#4 BENT BAR (LEVEL II, DUAL COATED)	2
2	B-404D	#4 BENT BAR (LEVEL II, DUAL COATED)	2
3	B-431D	#4 BENT BAR (LEVEL II, DUAL COATED)	58
4	B-432D	#4 BENT BAR (LEVEL II, DUAL COATED)	58
5	B-433D	#4 BENT BAR (LEVEL II, DUAL COATED)	34
6	B-434D	#4 BENT BAR (LEVEL II, DUAL COATED)	34
7	B-435D	#4 BENT BAR (LEVEL II, DUAL COATED)	2
8	B-436D	#4 BENT BAR (LEVEL II, DUAL COATED)	2
9	B-437D	#4 BENT BAR (LEVEL II, DUAL COATED)	2
10	B-438D	#4 BENT BAR (LEVEL II, DUAL COATED)	2
11	B-439D	#4 BENT BAR (LEVEL II, DUAL COATED)	2
12	B-440D	#4 BENT BAR (LEVEL II, DUAL COATED)	2
13	B-441D	#4 BENT BAR (LEVEL II, DUAL COATED)	2
14	B-442D	#4 BENT BAR (LEVEL II, DUAL COATED)	2
15	B-443D	#4 BENT BAR (LEVEL II, DUAL COATED)	2
16	B-444D	#4 BENT BAR (LEVEL II, DUAL COATED)	2
17	B-445D	#4 BENT BAR (LEVEL II, DUAL COATED)	2
18	B-446D	#4 BENT BAR (LEVEL II, DUAL COATED)	2
19	B-447D	#4 BENT BAR (LEVEL II, DUAL COATED)	2
20	B-448D	#4 BENT BAR (LEVEL II, DUAL COATED)	2
21	B-449D	#4 BENT BAR (LEVEL II, DUAL COATED)	2
22	B-450D	#4 BENT BAR (LEVEL II, DUAL COATED)	2
23	B-451D	#4 BENT BAR (LEVEL II, DUAL COATED)	2
24	B-452D	#4 BENT BAR (LEVEL II, DUAL COATED)	2
25	B-501D	#5 BENT BAR (LEVEL II, DUAL COATED)	12
26	B-503D	#5 BENT BAR (LEVEL II, DUAL COATED)	6
27	B-504D	#5 BENT BAR (LEVEL II, DUAL COATED)	47
28			
29	MK-BI	DAYTON C-24 TYPE 4-APR DECK FORM HANGER (GALV.)	12
30		SET OF DOUBLE 1/2" x 270 KSI STRAND LIFTING LOOPS	4



D END BLOCK REINFORCING PLAN
S3
3/4" = 1'-0"

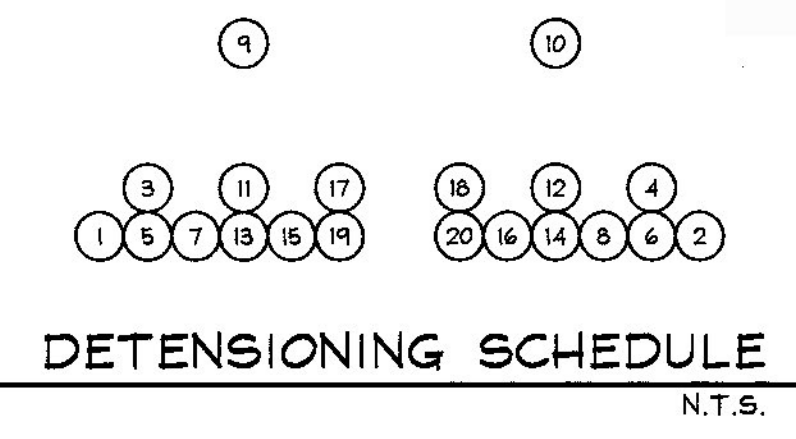
this is drawn showing interference with the post tension duct. that 6" space will be reduced to probably 4" or less. and the upper 3" spacing to the next might be 1" or slightly greater after shifting this stirrup more toward center of beam.



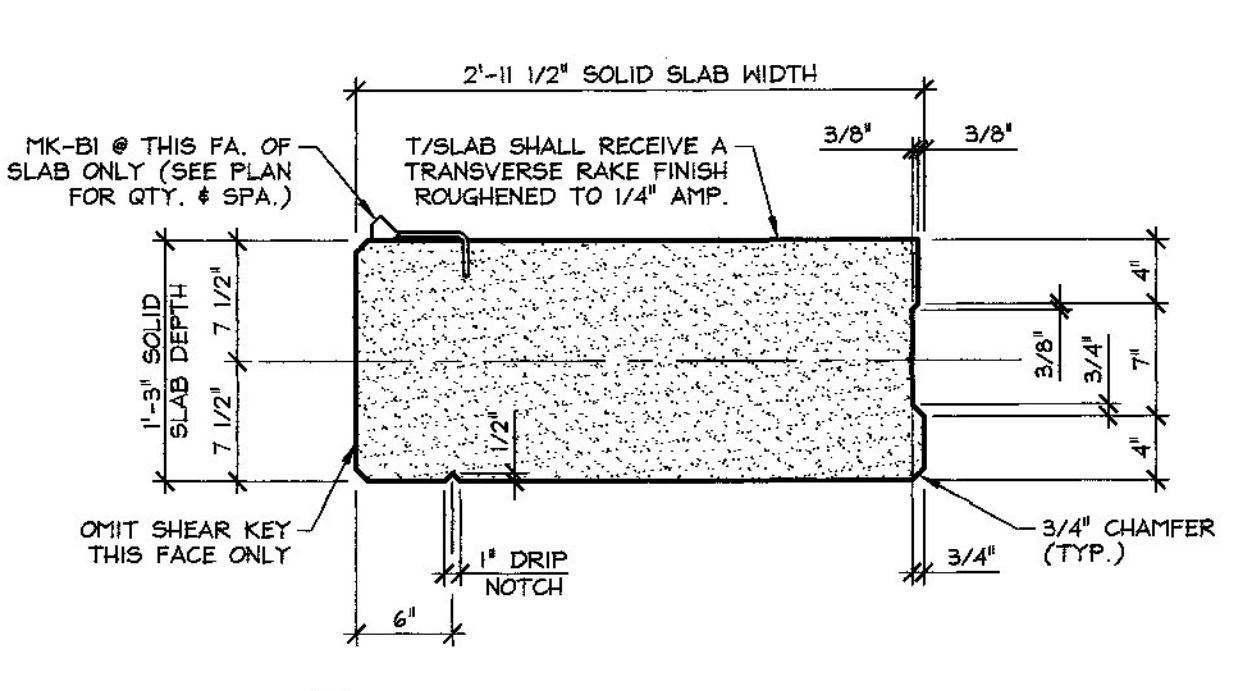
DETAIL - "A"
3" = 1'-0"

DETAIL - "B"
1 1/2" = 1'-0"

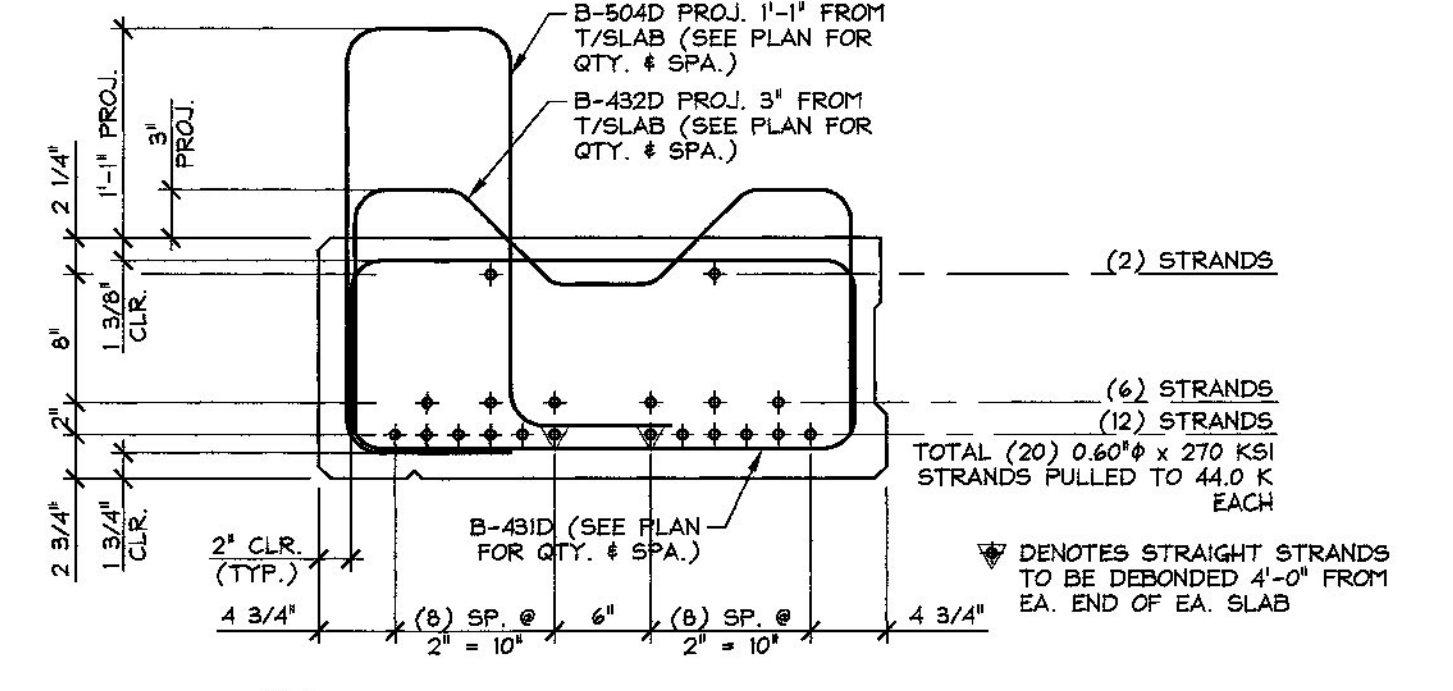
DETAIL - "C"
1 1/2" = 1'-0"



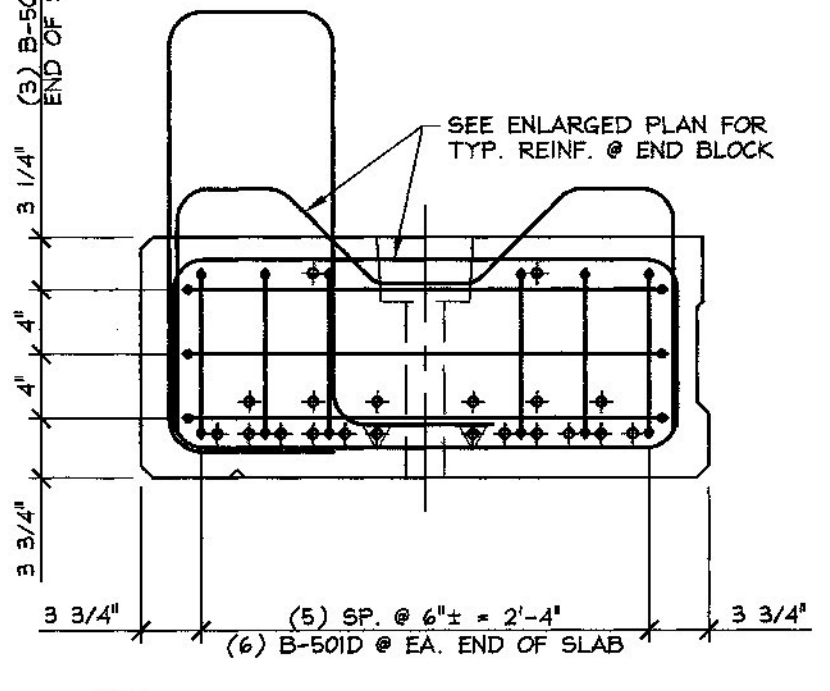
DETENSING SCHEDULE
N.T.S.



A DIMENSIONAL SECTION
S3
1" = 1'-0"



B REINFORCING SECTION
S3
1" = 1'-0"



C END BLOCK REINFORCING SECTION
S3
1" = 1'-0"

4-24-14 REVISE REINFORCING

APPROVAL STAMP:

J.P. CARRARA & SONS INC.
Precast & Prestress Manufacturer
2464 CASE ST., MIDDLEBURY, VERMONT 05753 Phone: (802)388-6361 Fax: (802)388-8010

RENAUD BRO., INC.
CONTRACTOR
VERNON, VERMONT

STATE OF VERMONT AGENCY OF TRANSPORTATION
COUNTY OF WINDHAM

TOWN OF BRATTLEBORO
TH 12, CLASS III (LOCAL ROAD) OVER HALLADAY BROOK
BRIDGE NO.: 7 PROJECT NO.: BRO 1442(35)

DATE: MAR. 24, 2014
SCALE: NOTED
CHKD: M.D. DFTM: B.L.
JOB NO: 23424-014
DWG. NO: S3