

STEEL BEAM GUARDRAIL, GALV.  
 STA. 102+00 - 102+12, RT  
 STA. 103+20, 38.4' LT - 103+34, 44.5' LT  
 STA. 103+25 - 103+36, RT  
 STA. 104+63 - 104+76, LT

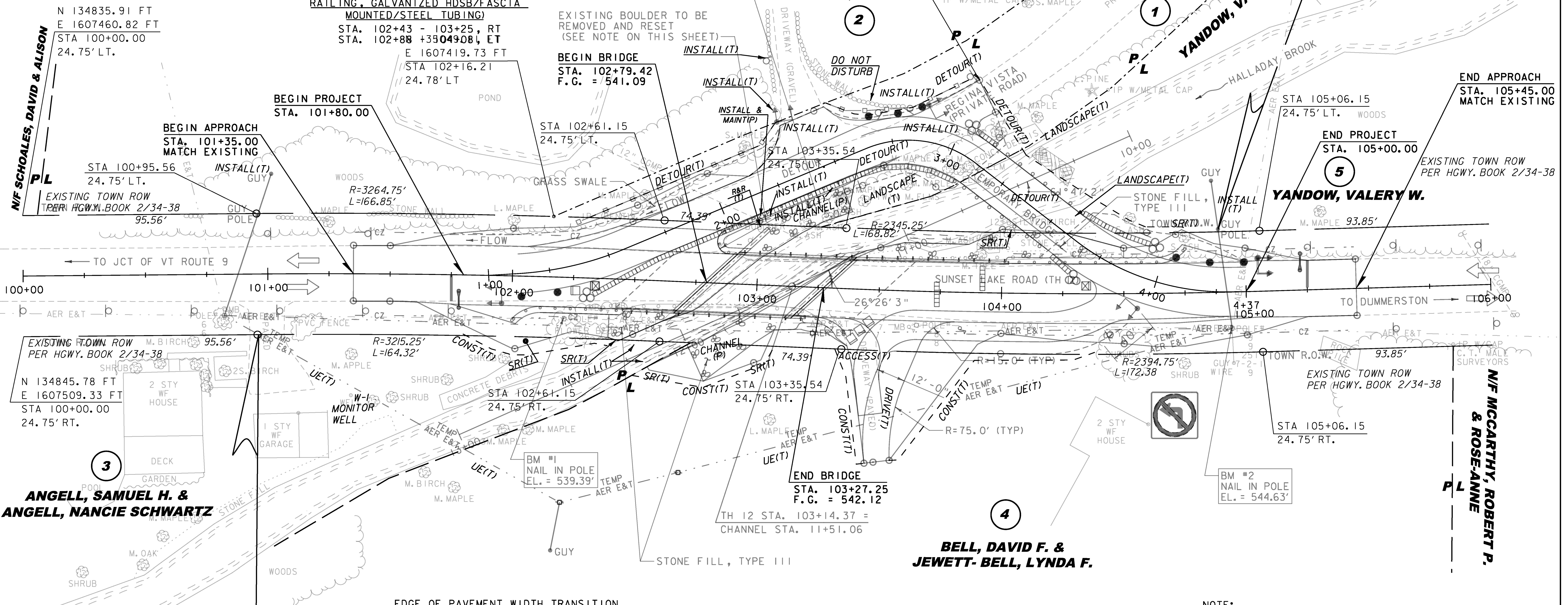
CONSTRUCT 11.5' PAVED APRON  
 STA. 102+69, LT - 41.5' WIDE  
 CONSTRUCT 12' PAVED DRIVE  
 STA. 103+59, RT - 12' WIDE  
 REMOVAL AND DISPOSAL OF GUARDRAIL  
 STA. 102+43 - 102+73, RT  
 STA. 102+92 - 102+96, LT  
 STA. 103+03 - 103+27, RT  
 STA. 103+31 - 104+46, LT

COLD PLANING, BITUMINOUS PAVEMENT  
 STA. 101+35 - 101+55, LT & RT  
 STA. 105+25 - 105+45, LT & RT  
 SPECIAL PROVISION (BRIDGE  
 RAILING, GALVANIZED HDSB/FASCIA  
 MOUNTED/STEEL TUBING)  
 STA. 102+43 - 103+25, RT  
 STA. 102+88 - 103+08, LT

GUARDRAIL APPROACH SECTION, GALVANIZED  
 HD STEEL BEAM W/8 FEET POSTS  
 STA. 102+18 - 102+43, RT  
 STA. 102+92, 24.58' LT - 102+88, LT  
 STA. 104+08 - 104+33, LT  
 RELOCATE MAILBOX, MULTIPLE SUPPORT  
 STA. 102+39, RT  
 RELOCATE MAILBOX, SINGLE SUPPORT  
 STA. 103+83, RT

STEEL BEAM GUARDRAIL,  
 GALVANIZED W/8 FEET POSTS  
 STA. 102+12 - 102+18, RT  
 STA. 102+92, 24.58' LT - 103+20, 38.4' LT  
 STA. 104+33 - 104+63, LT  
 ANCHOR FOR STEEL BEAM RAIL  
 STA. 102+06, RT  
 STA. 103+25, 40.75' LT  
 STA. 103+30, RT  
 STA. 104+69, LT

**END R.O.W. PROJECT**  
**BRO 1442 (35)**  
**STA. 104+89.02**  
**25.83' RT.**



EXISTING TOWN ROW  
 PER HWY. BOOK 2/34-38  
 N 134845.78 FT  
 E 1607509.33 FT  
 STA 100+00.00  
 24.75' RT.

**BEGIN R.O.W. PROJECT**  
**BRO 1442 (35)**  
**STA. 100+96.02**  
**24.75' RT.**

EDGE OF PAVEMENT WIDTH TRANSITION  
 STA. 101+55 = MATCH EXISTING LT & RT  
 STA. 101+80 = 12'-2" LT & RT  
 STA. 104+72 = 12'-2" RT  
 STA. 104+97 = 12'-2" LT  
 STA. 105+05 = MATCH EXISTING LT & RT

SCALE 1" = 20'-0"  
 20 0 20

LINES SHOWN ON THIS PLAN AS EXISTING  
 PROPERTY LINES P/L ARE BELIEVED TO  
 BE ACCURATE BUT SHOULD NOT BE RELIED  
 UPON FOR PURPOSES UNRELATED TO THE  
 STATE OF VERMONT'S ACQUISITION OF LAND  
 AND RIGHTS FOR THIS PROJECT.

**FOR R.O.W.  
 USE ONLY**

NOTE:  
 1. EXISTING BOULDER ALONG REGINA VISTA (T.H. 12  
 STA. 103+02, 23.83' LT) SHALL BE REMOVED AND  
 RESET. BOULDER SHALL BE LOCATED BEHIND THE  
 GUARDRAIL SO AS TO PROVIDE A MINIMUM OF 4'-0"  
 CLEAR ZONE BETWEEN THE BOULDER AND THE FRONT  
 OF GUARDRAIL. ALL COSTS FOR PROPERLY  
 REMOVING, STORING AND RESETTING THE BOULDER  
 WILL BE INCIDENTAL TO ALL CONTRACT ITEMS.

PROJECT NAME: BRATTLEBORO  
 PROJECT NUMBER: BRO 1442(35)  
 FILE NAME: NAME#DGN  
 PROJECT LEADER: M. CHANETTE  
 DESIGNED BY: S.E. BURBANK  
 ROW LAYOUT SHEET 1 OF 1  
 PLOT DATE: 10/14/2013  
 DRAWN BY: B. FERLAZO  
 CHECKED BY: H. PETROVS  
 SHEET 68 OF 68