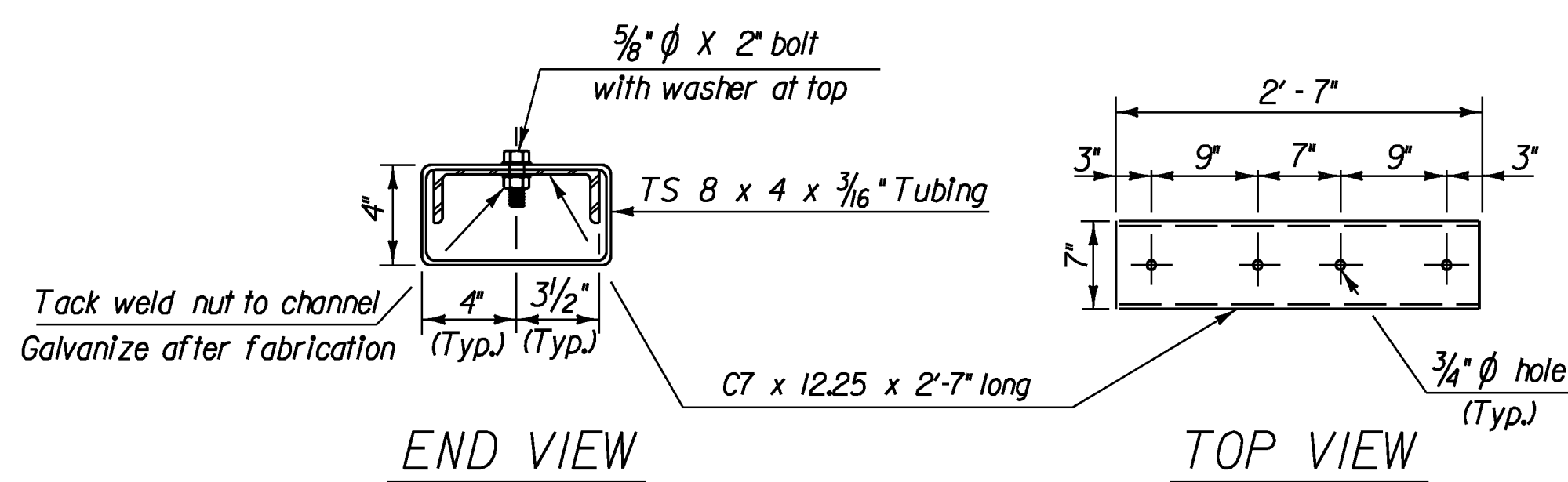
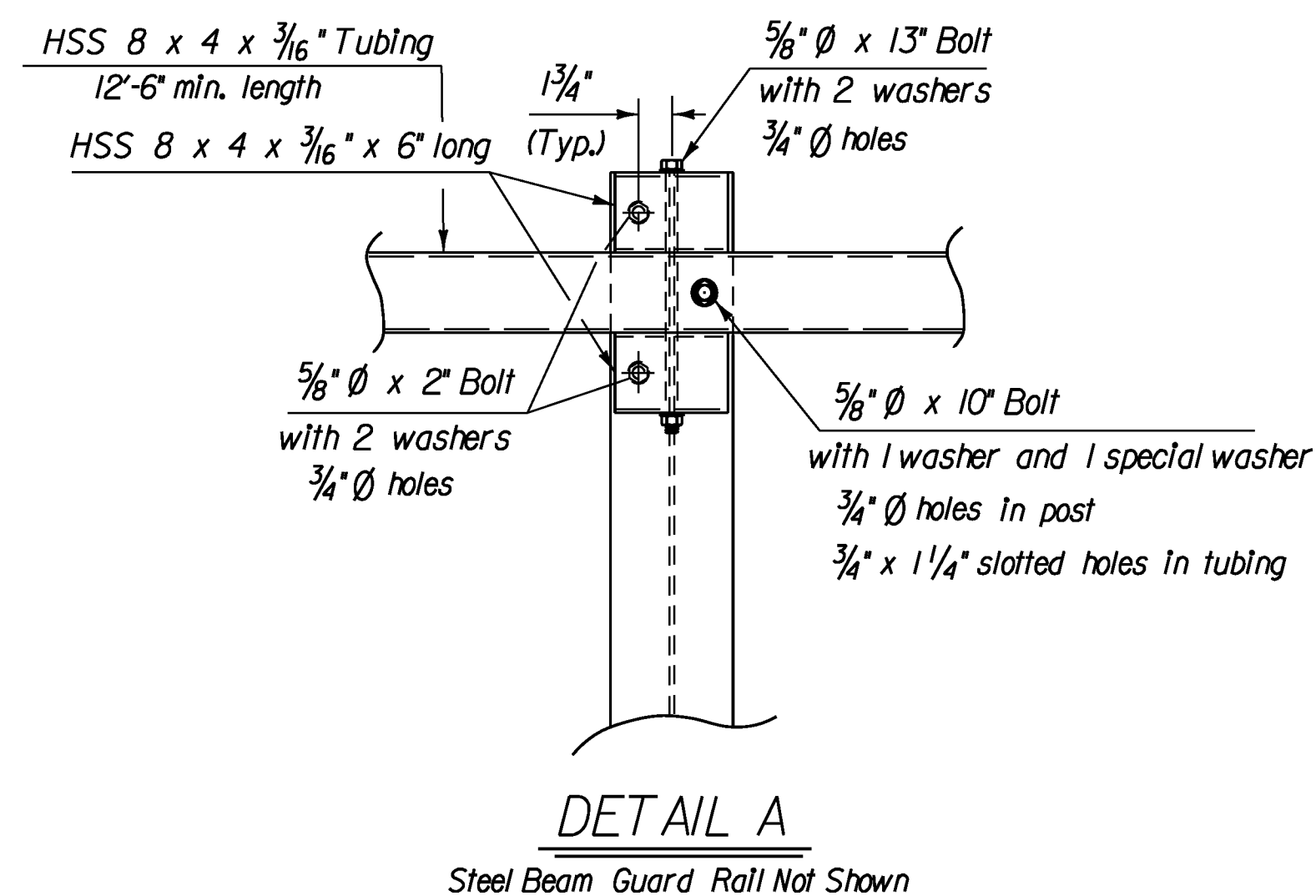
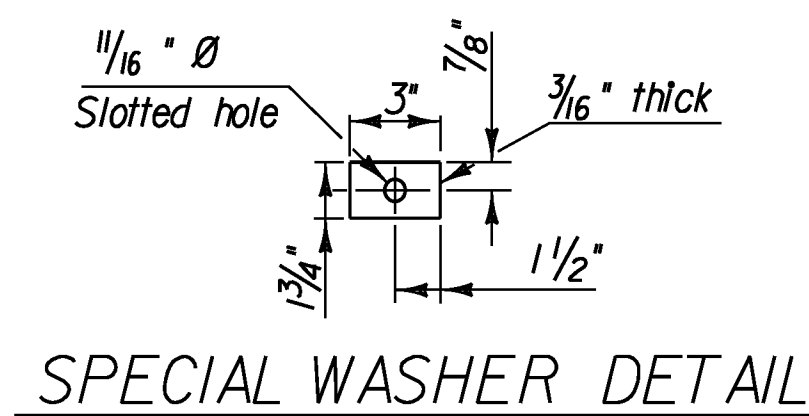
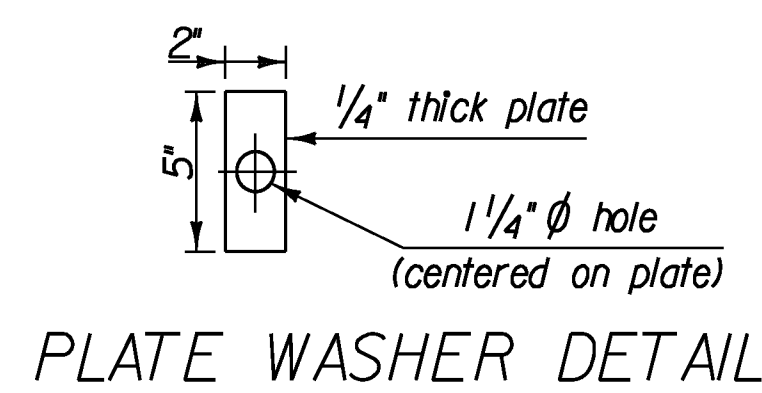


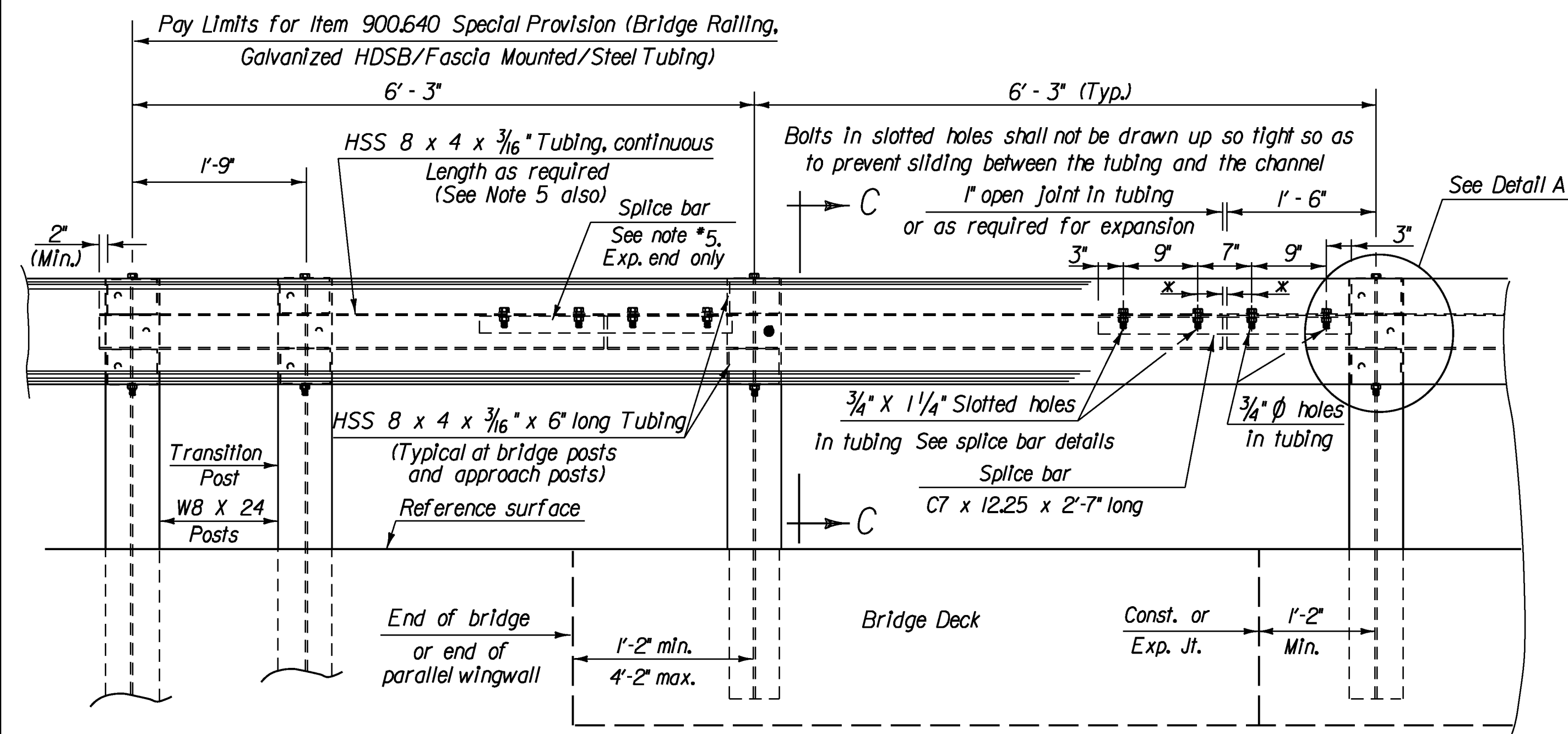
FASCIA MOUNTED WITH CURB



SPLICE BAR DETAILS



DETAIL A
Steel Beam Guard Rail Not Shown

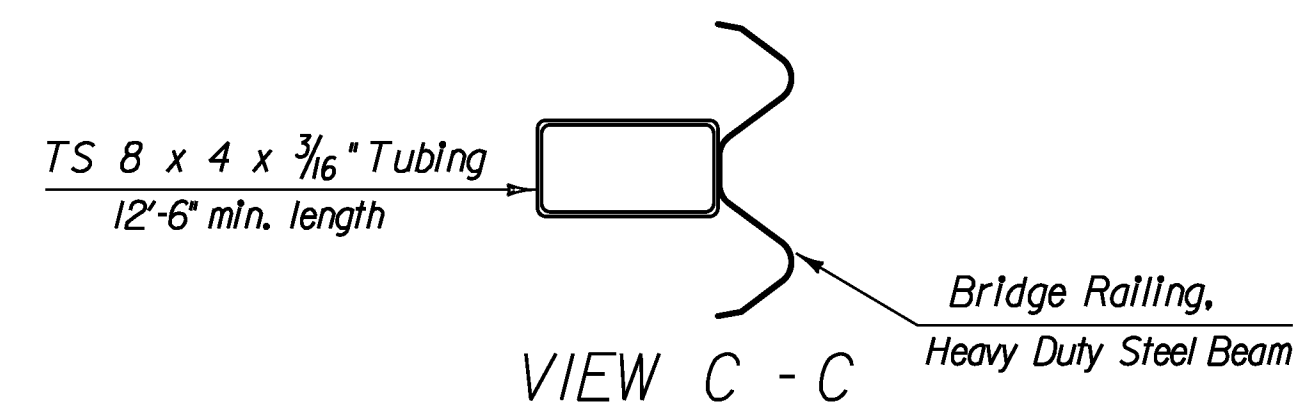


RAILING ELEVATION VIEW
(SHOWN LOOKING FROM C WITHOUT CURB)

* 3/4" min. These dimensions will vary depending upon the total amount of expansion required

NOTES

1. ALL WORK AND MATERIALS SHALL CONFORM TO SECTION 525.
2. PRIOR TO GALVANIZING THE ASSEMBLED POST, GRIND ALL EDGES TO A MINIMUM RADIUS OF 1/16".
3. ALL POSTS SHALL BE SET NORMAL TO GRADE.
4. SPLICES FOR THE STEEL BEAM GUARDRAIL SHALL LAP IN THE DIRECTION OF TRAFFIC.
5. A RAILING JOINT SPLICE SHALL BE PROVIDED IN ANY RAIL BAY SPANNING THE END OF AN INTEGRAL ABUTMENT BRIDGE AND AT ALL SUPERSTRUCTURE EXPANSION JOINTS.
6. SEE STANDARD DRAWING G-1 FOR DETAILS OF DELINEATORS. A DELINEATOR SHALL BE LOCATED AT EVERY FIFTH POST. WHITE IS TO BE INSTALLED ON THE DRIVER'S RIGHT. FOR ONE WAY BRIDGES, YELLOW IS TO BE INSTALLED ON THE DRIVER'S LEFT.
7. FOR RADIUS LESS THAN 950 FEET, HSS 8x4 TUBES SHALL BE SHOP BENT TO FIT THE APPLICABLE CURVE.
8. HOLES IN RAIL FOR RAIL TUBE ATTACHMENT MAY BE FIELD DRILLED. HOLES SHALL BE COATED WITH AN APPROVED ZINC-RICH PAINT PRIOR TO INSTALLATION.
9. SEE STANDARDS G-1 AND G-1d FOR ADDITIONAL DETAILS CONCERNING GUARDRAIL.



VIEW C - C

PROJECT NAME: BRATTLEBORO
PROJECT NUMBER: BRO 1442(35)

FILE NAME: z10j062brail.dgn
PROJECT LEADER: S.E. BURBANK
DESIGNED BY: E.A. FIALA
BRIDGE RAIL DETAILS

PLOT DATE: 10/14/2013
DRAWN BY: VTRANS/VHB
CHECKED BY: S.E. BURBANK
SHEET 51 OF 68