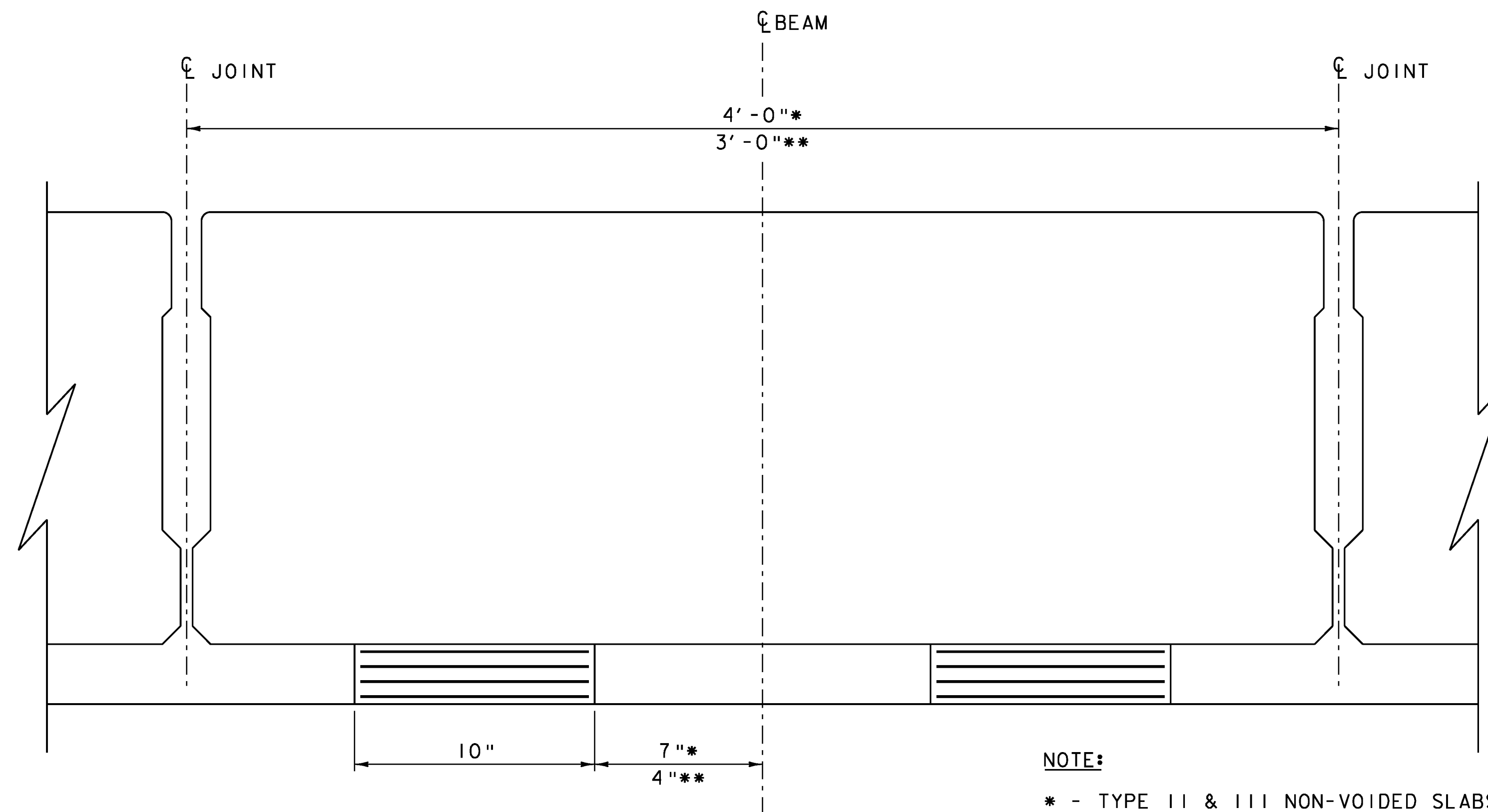


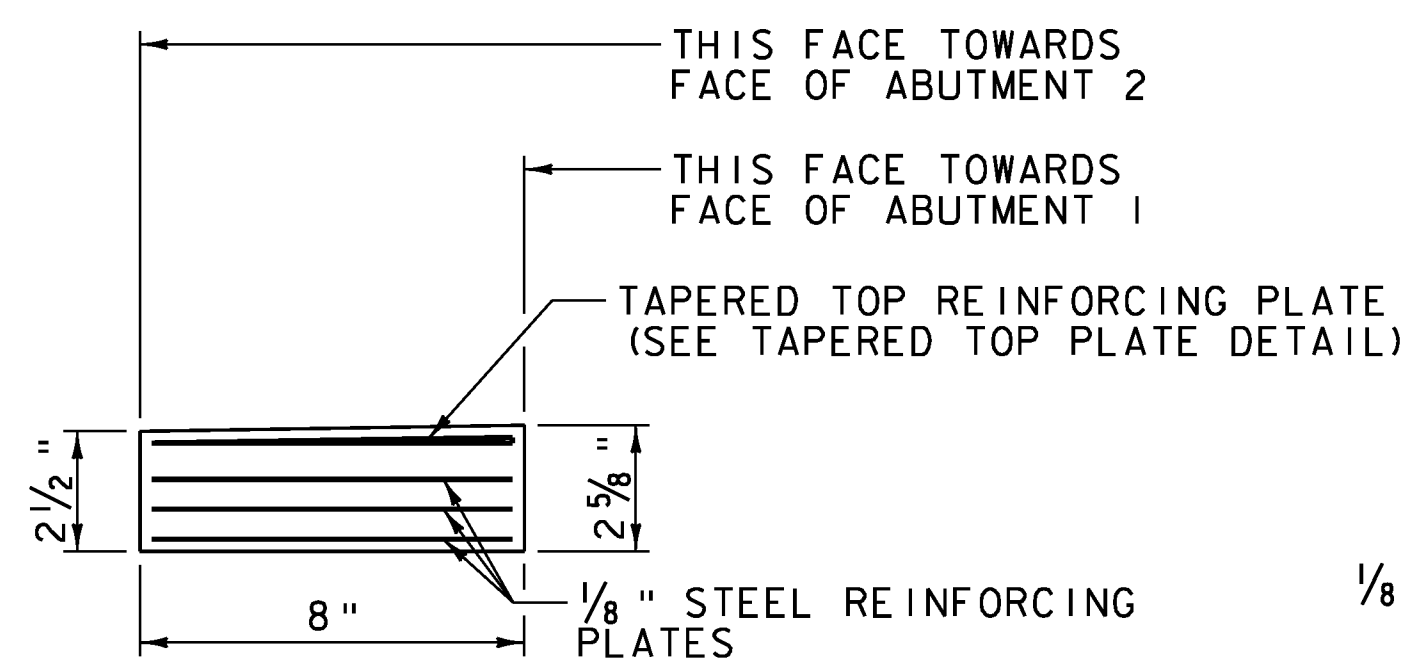
ELASTOMERIC BEARING
SIDE ELEVATION
SCALE 3" = 1'-0"



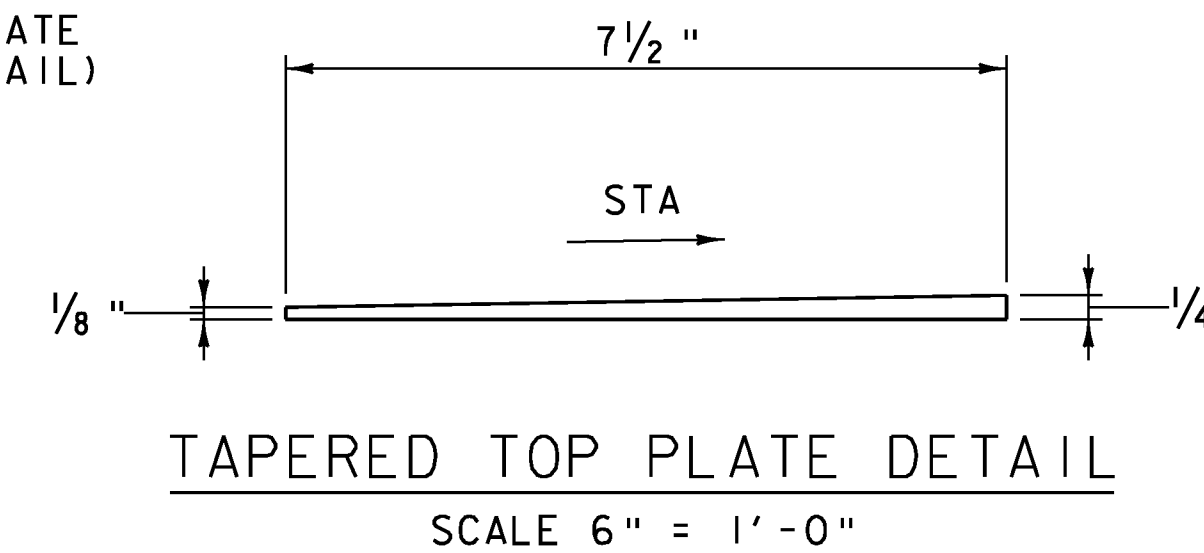
ELASTOMERIC BEARING
FRONT ELEVATION
SCALE 3" = 1'-0"

NOTE:

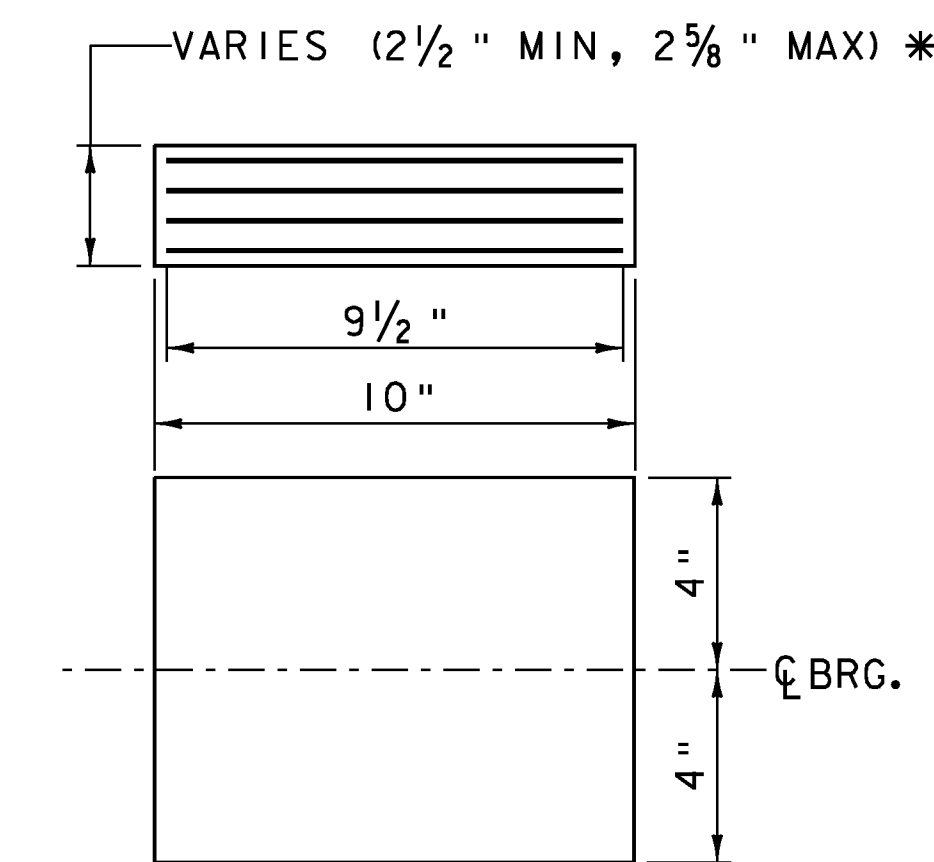
* - TYPE II & III NON-VOIDED SLABS
** - TYPE I NON-VOIDED SLABS



ELASTOMERIC BEARING SIDE VIEW
SCALE 3" = 1'-0"



TAPERED TOP PLATE DETAIL
SCALE 6" = 1'-0"



ELASTOMERIC BEARING
PLAN VIEW
SCALE 3" = 1'-0"

BEARING NOTES

1. BEARINGS SHALL CONFORM TO THE APPLICABLE SUBSECTIONS OF SECTIONS 531 AND 731.
2. THE BEARINGS, INCLUDING ANCHOR BOLTS, DRILLING AND GROUTING, AND WASHERS AND NUTS SHALL BE PAID FOR UNDER ITEM 531.17 "BEARING DEVICE ASSEMBLY, STEEL REINFORCED ELASTOMER PAD."
3. ALL PLATES, NUTS, WASHERS AND ANCHOR BOLTS SHALL BE GALVANIZED OR METALIZED AS PER SUBSECTIONS 726.08 AND 726.09. AREAS OF GALVANIZING OR METALIZING DAMAGED BY FIELD WELDING OR HANDLING SHALL BE REPAIRED IN CONFORMANCE WITH SUBSECTIONS 726.08 AND 726.09.
4. ALL REINFORCEMENT BETWEEN LAYERS OF ELASTOMER SHALL BE STEEL, MEETING THE REQUIREMENTS OF SUBSECTION 714.02. ALL INTERNAL STEEL PLATES SHALL BE SAND BLASTED AND FREE OF COATINGS, RUST AND MILL SCALE. THE PLATES SHALL BE FREE OF SHARP EDGES AND BURRS.
5. ANCHOR BOLTS SHALL BE ASTM F1554, GRADE 55 AND MEET THE REQUIREMENTS OF SUBSECTION 714.08.
6. STEEL REINFORCED ELASTOMERIC BEARINGS SHALL HAVE A MINIMUM 1/4" EDGE SEAL OF ELASTOMER INTEGRAL WITH BEARING OVER ALL INTERNAL PLATES.

7. THE ELASTOMER WAS DESIGNED USING METHOD A WITH A SHEAR MODULUS OF 100 PSI.
8. THE ELASTOMER SHALL MEET THE REQUIREMENTS OF LOW TEMPERATURE ZONE D, GRADE 4.
9. THE CONCRETE UNDER THE BEARING DEVICE SHALL BE LEVEL IN THE LONGITUDINAL DIRECTION
10. ALL DESIGNS DONE FOR THE BEARINGS SHALL BE PER THE AASHTO LRFD BRIDGE DESIGN SPECIFICATIONS 6TH EDITION AND ITS LATEST REVISIONS.
11. ALTERNATIVE CONFIGURATIONS FOR BEARINGS MAY BE SUBMITTED FOR APPROVAL. ANY ALTERNATE SUBMITTED SHALL BE DESIGNED AND CERTIFIED TO MEET THE DESIGN LOADS AND CRITERIA SHOWN ON THE PLANS.
12. BRIDGE SEAT ELEVATIONS MAY BE REVISED TO ACCOMMODATE AN ALTERNATIVE CONFIGURATION.
13. DESIGN CRITERIA:
 - A.) HORIZONTAL CAPACITY SHALL BE A MINIMUM OF 15% VERTICAL LOAD IN ANY UNRESTRAINED DIRECTION.
 - B.) DESIGN LOAD PER BEARING
 - DL = 15 KIPS
 - LL = 25 KIPS W/O IMPACT

- * (2) 1/4" EXTERIOR LAYERS OF ELASTOMER
- (3) 1/2" INTERIOR LAYERS OF ELASTOMER
- (3) 1/8" STEEL REINFORCING PLATES
- (1) TAPERED STEEL REINFORCING TOP PLATE (SEE DETAIL)

PROJECT NAME: BRATTLEBORO
PROJECT NUMBER: BRO 1442(35)

FILE NAME: z10j062sup.dgn
PROJECT LEADER: S.E. BURBANK
DESIGNED BY: E.A. FIALA
BEARING DETAILS

PLOT DATE: 10/14/2013
DRAWN BY: J.L. LEMIEUX
CHECKED BY: S.E. BURBANK
SHEET 39 OF 68