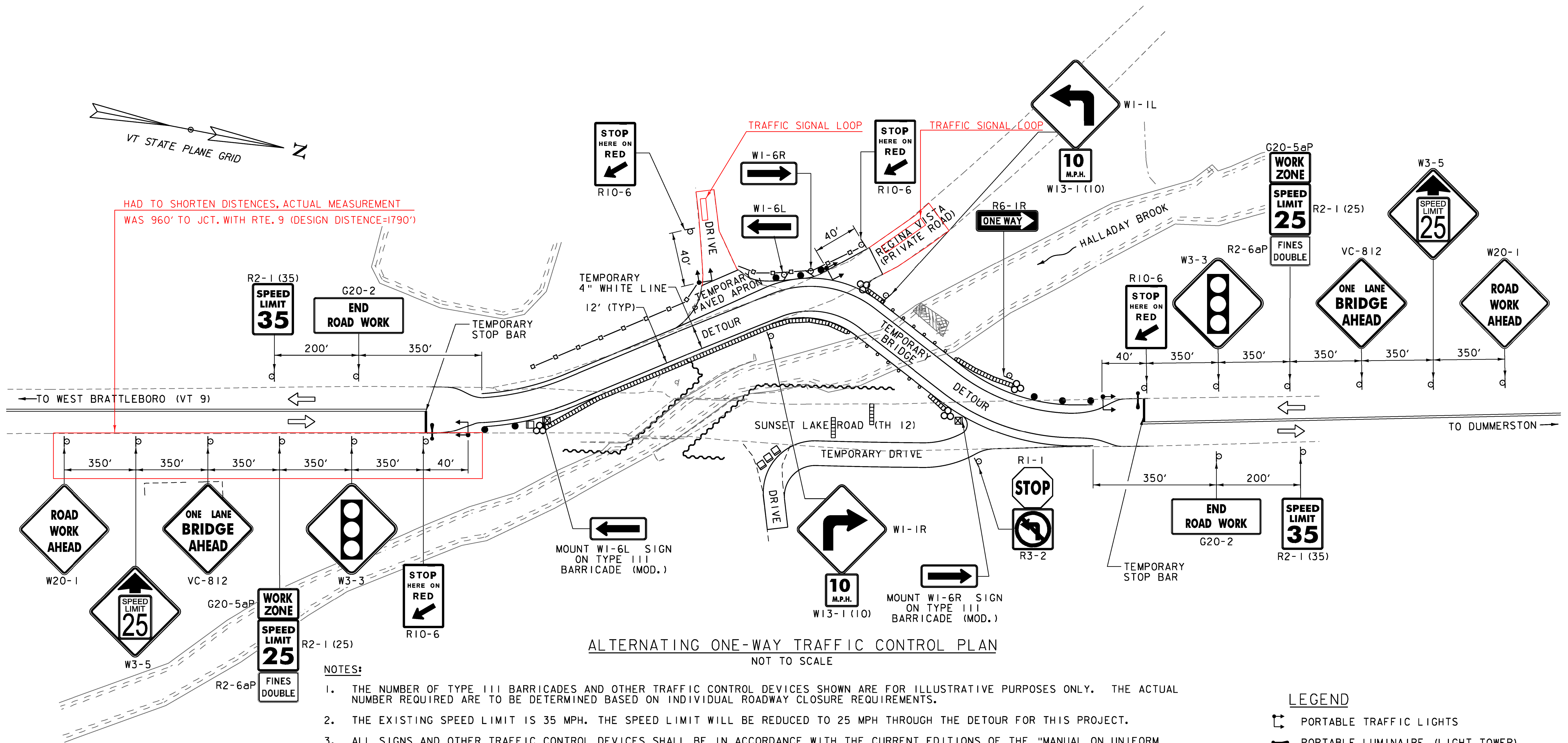


HAD TO SHORTEN DISTANCES, ACTUAL MEASUREMENT WAS 960' TO JCT. WITH RTE. 9 (DESIGN DISTANCE=1790')



ALTERNATING ONE-WAY TRAFFIC CONTROL PLAN
NOT TO SCALE

NOTES:

1. THE NUMBER OF TYPE III BARRICADES AND OTHER TRAFFIC CONTROL DEVICES SHOWN ARE FOR ILLUSTRATIVE PURPOSES ONLY. THE ACTUAL NUMBER REQUIRED ARE TO BE DETERMINED BASED ON INDIVIDUAL ROADWAY CLOSURE REQUIREMENTS.
2. THE EXISTING SPEED LIMIT IS 35 MPH. THE SPEED LIMIT WILL BE REDUCED TO 25 MPH THROUGH THE DETOUR FOR THIS PROJECT.
3. ALL SIGNS AND OTHER TRAFFIC CONTROL DEVICES SHALL BE IN ACCORDANCE WITH THE CURRENT EDITIONS OF THE "MANUAL ON UNIFORM TRAFFIC CONTROL DEVICES" (MUTCD) AND THE "STANDARD HIGHWAY SIGNS AND MARKINGS" BOOK (SHSM) PUBLISHED BY THE FEDERAL HIGHWAY ADMINISTRATION (FHWA).
4. SOLID SUBSTRATE CONSTRUCTION SIGNS SHALL HAVE RETRO-REFLECTIVE SHEETING EQUAL TO OR EXCEEDING "AMERICAN SOCIETY FOR TESTING AND MATERIALS" (ASTM D 4956) TYPE VII, VIII, OR IX REQUIREMENTS, UNLESS OTHERWISE NOTED. SOLID SUBSTRATE REGULATORY SIGNS (WHITE BACKGROUND) SHALL HAVE RETRO-REFLECTIVE SHEETING EQUAL TO OR EXCEEDING ASTM D 4956 TYPE III.
5. SIGNS SHALL BE ERECTED BEFORE THE START OF ANY WORK AND SHALL BE COVERED UNTIL WORK COMMENCES. DURING PERIODS OF INACTIVITY OR UPON COMPLETION OF THE WORK, EACH SIGN SHALL BE ERECTED IN A NEAT AND WORKMANLIKE MANNER. SIGNS SHALL BE REMOVED UPON COMPLETION OF THE WORK AT THE DISCRETION OF THE ENGINEER.
6. FIXED SIGNS SHALL BE SET SECURELY IN THE GROUND. THE BOTTOM OF A SIGN SHALL BE AT LEAST SEVEN FEET ABOVE THE EDGE OF PAVEMENT.
7. DURING NON-WORK PERIODS, ALL EQUIPMENT SHALL BE MOVED TO A LOCATION OFF PAVED SHOULDERS AND OUTSIDE THE CLEAR ZONE, OR PROTECTED BY TEMPORARY TRAFFIC BARRIER OR GUARDRAIL.
8. AN ENERGY ABSORPTION ATTENUATOR RATED FOR 35 MPH SHALL BE LOCATED AT THE END OF THE BARRIER.
9. PAYMENT FOR ALL ON AND OFF-PROJECT SIGNING AND TRAFFIC CONTROL DEVICES, WITH THE EXCEPTION OF TEMPORARY TRAFFIC BARRIER, WILL BE INCLUDED IN THE UNIT PRICE BID FOR CONTRACT ITEM 641.10. PAYMENT FOR TEMPORARY TRAFFIC BARRIER WILL BE INCLUDED IN THE UNIT PRICE BID FOR CONTRACT ITEM 528.10.

LEGEND

- ☐ PORTABLE TRAFFIC LIGHTS
- PORTABLE LUMINAIRE (LIGHT TOWER)
- REFLECTIVE PLASTIC DRUM
- ⇐ FLOW OF TRAFFIC
- ☐ TYPE III BARRICADE
- ☒ TYPE III BARRICADE (MOD.)
- ⊗ ENERGY ABSORPTION ATTENUATOR
- ▬ CONCRETE MEDIAN BARRIER
- SPECIAL PROVISION (FABRIC SCREENING FENCE) (SEE TCP 3 OF 3)

PROJECT NAME: BRATTLEBORO
PROJECT NUMBER: BRO 1442(35)

FILE NAME: z10j062+cp2.dgn
PROJECT LEADER: M.A. COLGAN
DESIGNED BY: E.A. FIALA
TRAFFIC CONTROL PLAN (2 OF 3)

PLOT DATE: 10/14/2013
DRAWN BY: E.A. FIALA
CHECKED BY: S.E. BURBANK
SHEET 17 OF 68

