

GPS CONTROL POINTS

HVCTRL #2

MAG NAIL SET
 NORTH = 135124.4650
 EAST = 1607422.7270
 ELEV. = 541.0500

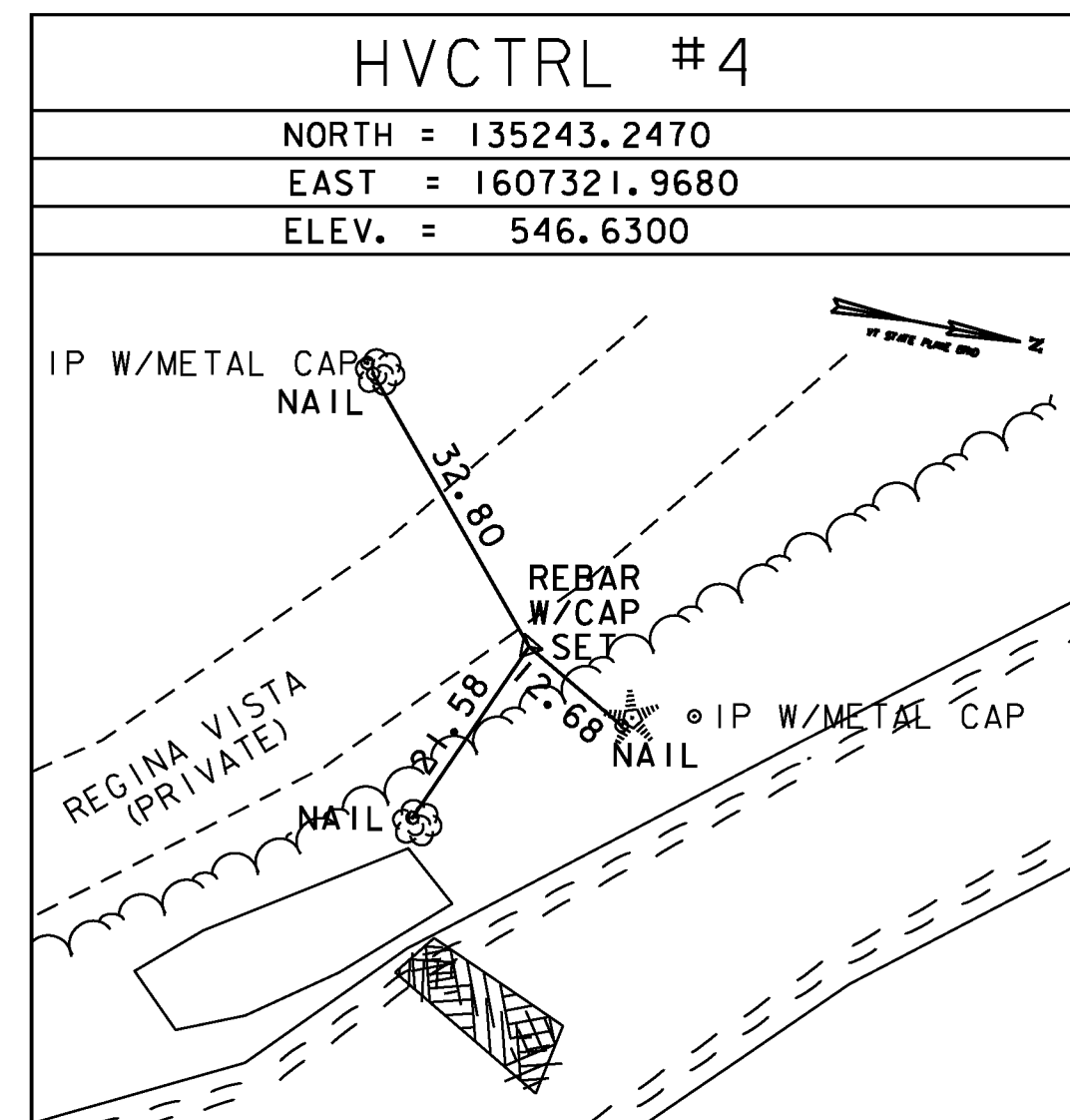
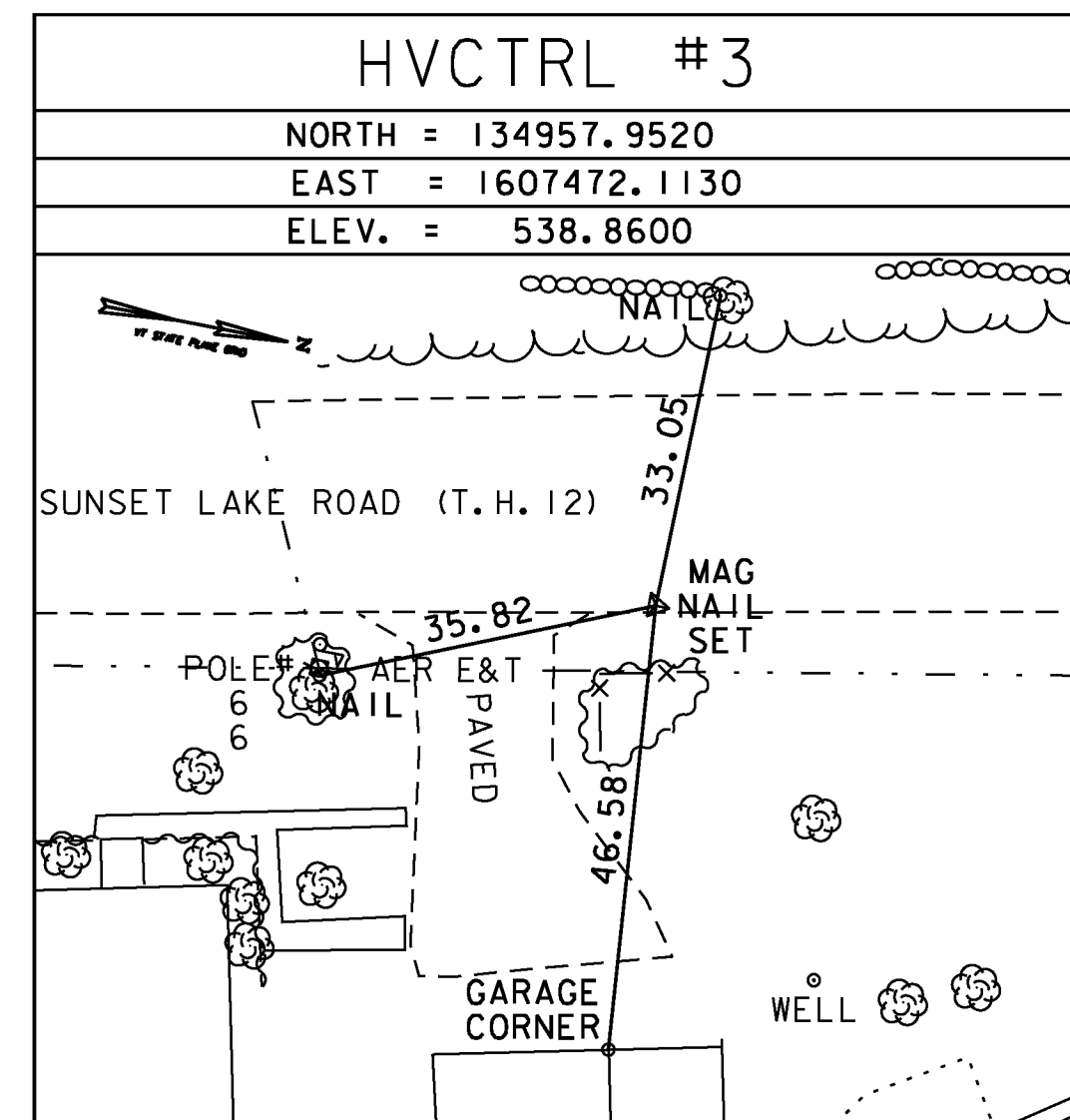
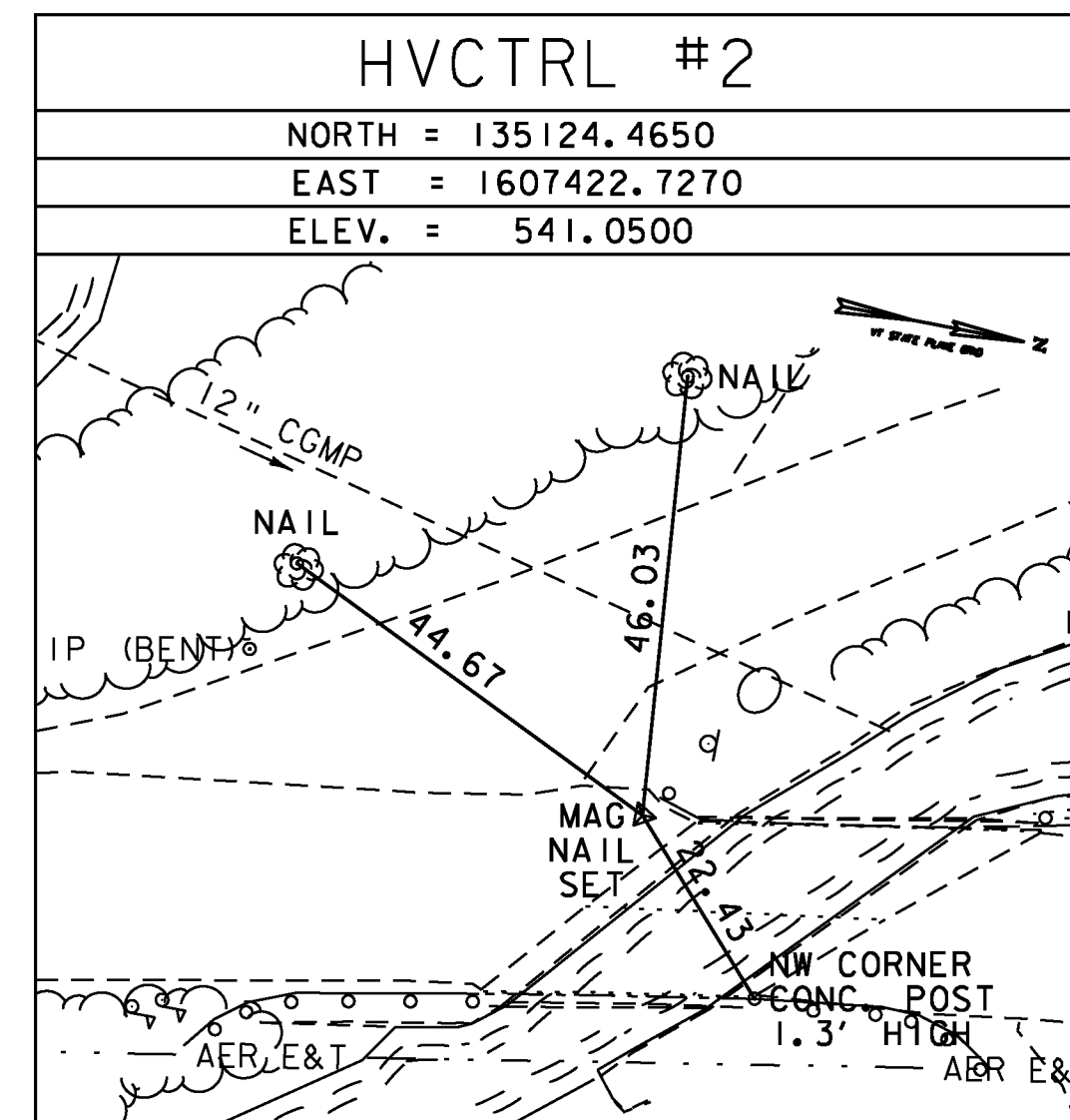
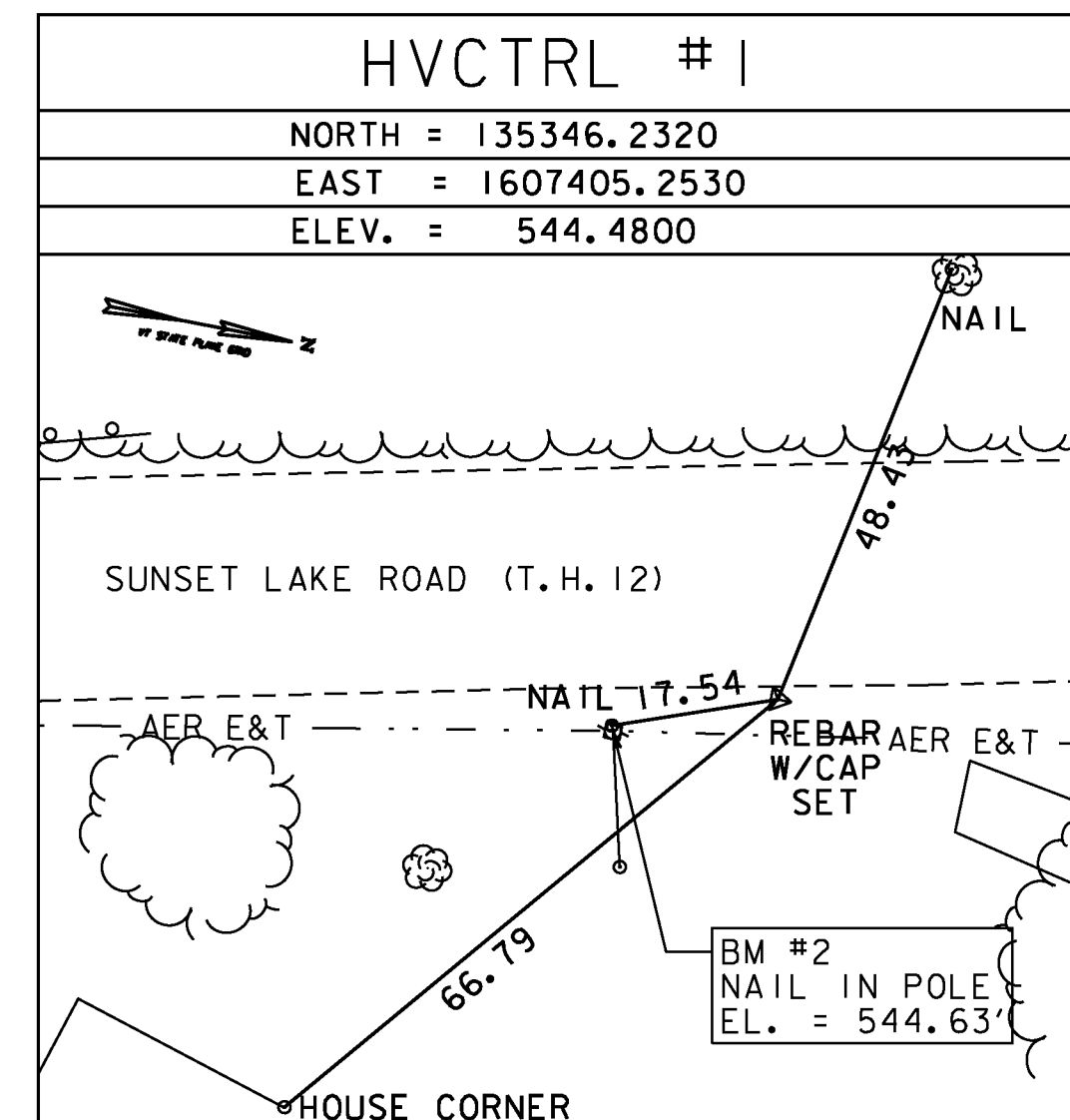
GENERAL LOCATION, WEST BRATTLEBORO, VT. FROM THE INTERSECTION OF VT ROUTE 9 AND SUNSET LAKE ROAD (T.H. 12), PROCEED NORTH ON SUNSET LAKE ROAD (T.H. 12) FOR 0.2 MI (0.3 KM) TO THE SOUTHWEST CORNER OF BRIDGE 7 OVER HALLADAY BROOK AND THE MARK ON THE LEFT. THE MARK IS SET IN THE PAVEMENT. SEE TRAVERSE TIES BELOW FOR TIE DISTANCES.

VCTRL #106

B 14 RESET 1988
 NORTH = 134276.6160
 EAST = 1608361.3210
 ELEV. = 522.7390

GENERAL LOCATION, BRATTLEBORO, VT., ABOUT 3.5 MI (5.6 KM) WEST OF BRATTLEBORO, ABOUT 13 MI (20.9 KM) EAST OF WILMINGTON, AND ABOUT 9.5 MI (15.3 KM) NORTH OF THE MASSACHUSETTS/VERMONT STATE LINE. TO REACH FROM THE EAST END OF THE VT ROUTE 9 BRIDGE OVER I-91 IN BRATTLEBORO GO WEST ALONG VT ROUTE 9 FOR 2.6 MI (4.2 KM) TO THE INTERSECTION OF WESTGATE DRIVE LEFT AND WINDING HILL ROAD RIGHT. TURN RIGHT AND GO NORTH ALONG WINDING HILL ROAD FOR 0.1 MI (0.2 KM) TO THE SOUTH END OF THE BRIDGE OVER HALLADAY BROOK AND THE MARK ON THE LEFT, SET IN THE TOP OF THE WINGWALL AT THE SOUTHWEST CORNER OF THE BRIDGE. THE MARK IS A STATE OF VERMONT SURVEY MARK AND IS 18.4 FT (5.6 M) WEST OF AND ABOUT 1.6 FT (0.5 M) LOWER THAN THE CENTERLINE OF WINDING HILL ROAD, 78.1 FT (23.8 M) EAST OF POLE NO. 7-0-27/7-0/3/3, 99.1 FT (30.2 M) NORTH OF POLE NO. 2A (WITH LUMEN), AND 18.0 FT (5.5 M) NORTHEAST OF A WATER METER MANHOLE.

TRAVERSE TIES



* Main Traverse Completed 11/15/10 by T.J.Gaudet and B.M.Klinefelter

DATUM	
VERTICAL	NAVD 88
HORIZONTAL	NAD 83 (07)



PROJECT NAME:	BRATTLEBORO
PROJECT NUMBER:	BRO 1442(35)
FILE NAME:	z10J062+1.dgn
PROJECT LEADER:	S.E. BURBANK
DESIGNED BY:	B.M. KLINEFELTER
TIE SHEET	
PLOT DATE:	10/14/2013
DRAWN BY:	B.M. KLINEFELTER
CHECKED BY:	J.W. GOLEK
SHEET	12 OF 68