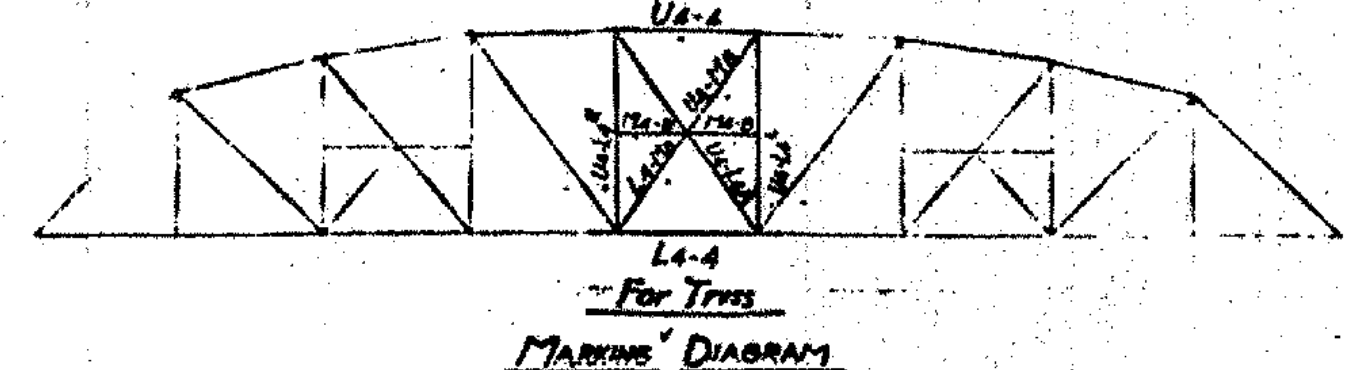
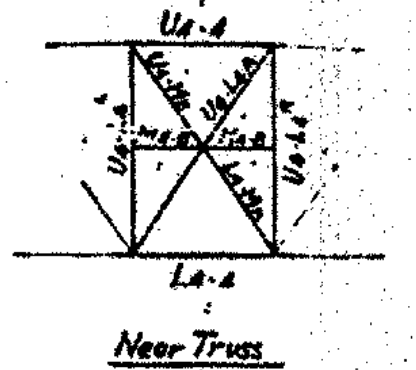


- Specifications: Standard Spec for Steel Highway Bridges,
 U.S. Dept. of Agriculture Dept. Bulletin #1259
- Rivets - Open Holes
 - Holes in material $\frac{1}{2}$ thick or less may be punched full size
 - Holes in material more than $\frac{1}{2}$ thick shall be subpunched and reamed or drilled from the solid.
 - Truss members shall be assembled in the shop and holes for field connections reamed or drilled while assembled and the members matchmarked.
 - Floorbeam and Stringer Connections to be subpunched and reamed to a metal template not less than $\frac{1}{2}$ inch thick or reamed while assembled.
 - Field connections for laterals, sway bracing and railing, punched full size.
 - Shop Paint - One coat of red lead and oil.

- REQUIRED LIST**
- 2 - Top Chords - Ua-4
 - 2 - Bot. Chords - La-4
 - 2 - Posts - Ua-La
 - 2 - Posts - Ua-La
 - 2 - Diagonals - Ua-La
 - 2 - " - La-Mb
 - 2 - " - Ua-Mb
 - 4 - Struts - Ma-B

Splice Material
 2 Pls. 12" x 12" x 1/2"
 2 Pls. 15" x 15" x 1/2"
 2 Pls. 12" x 4" x 1/2"



RICHMOND
 BHF 0209(7)

SHEET 22 OF 23
 FOR REFERENCE ONLY

For Reference Only
 Richmond BHF0209 (5)
 Sheet 49 of 50

229-106 Highway Riveted Truss Span

BETHLEHEM STEEL COMPANY
 Bethlehem, Pa.

DETAIL OF Truss - Center (Continued)
 STRUCTURE: Richmond Village Bridge - Winoski Riv.
 CUSTOMER: James E. Cashman Inc.

SHOP PAINT: See Note

RIVETS: OPEN HOLES: UNLESS NOTED

DATE	BY	REVISION
J.R.B. 4-4-28

FILE: F7363 CONT. EE2896 DWG. 4

Adv. Bills 1-3-8