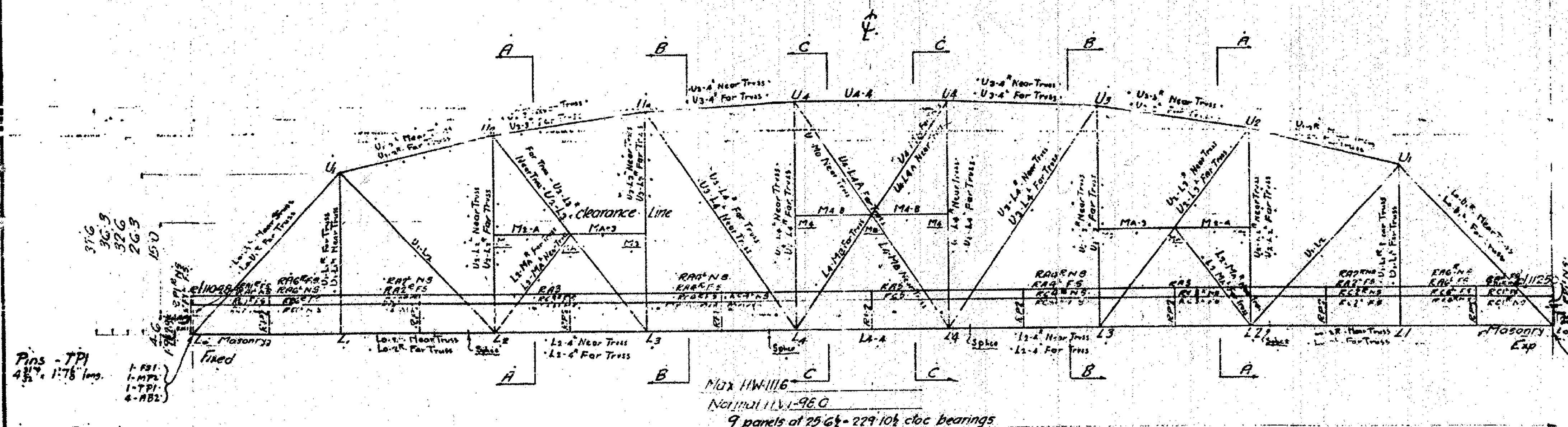


Note to Erector:  
Erect all laterals on slope with L backs up hill.



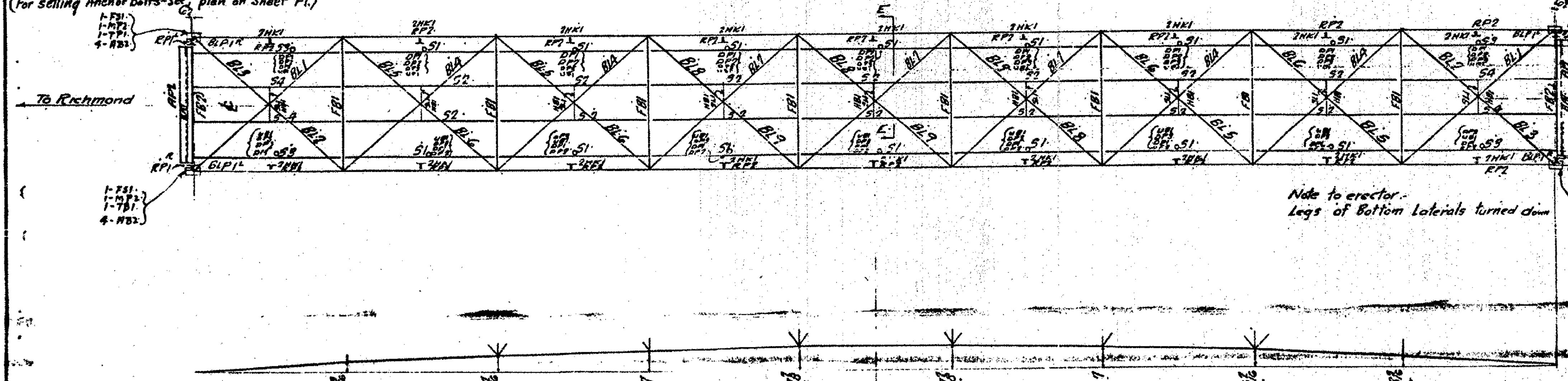
Pins - TPI  
4 1/2" x 1 1/8" long  
1 - F81  
1 - MPT  
1 - TPI  
4 - AB2

All Anchor Bolts this end are  
1/2" dia. x 6" long, Hex Nut, Hex Washer - AB2  
washers - 3" x 1/2" thick, 1/2" hole.  
(For setting Anchor Bolts - see plan on Sheet F1)

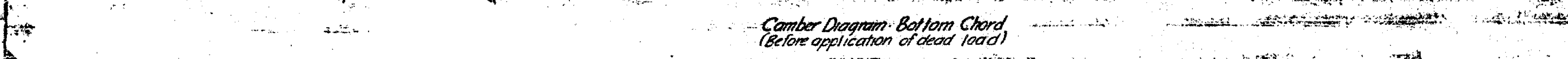
1 - F81  
1 - MPT  
1 - TPI  
4 - AB2

To Richmond

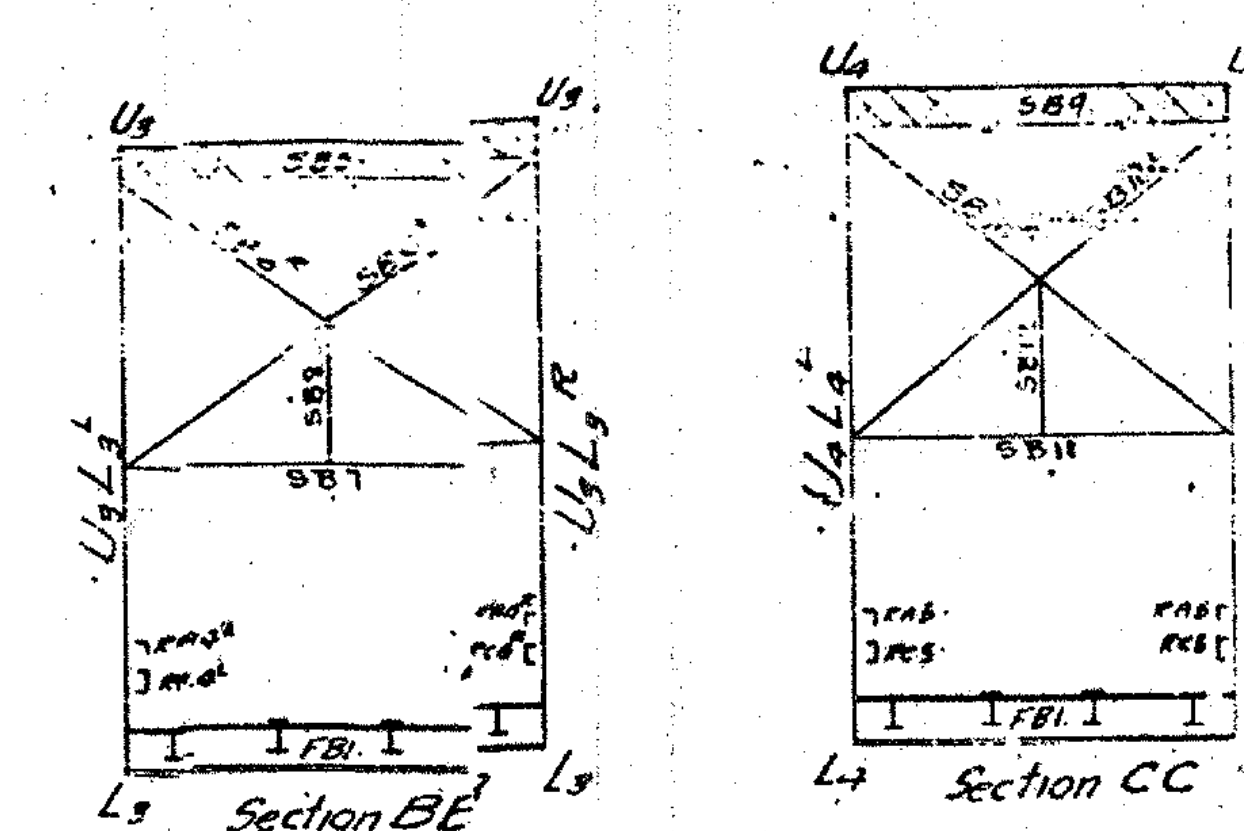
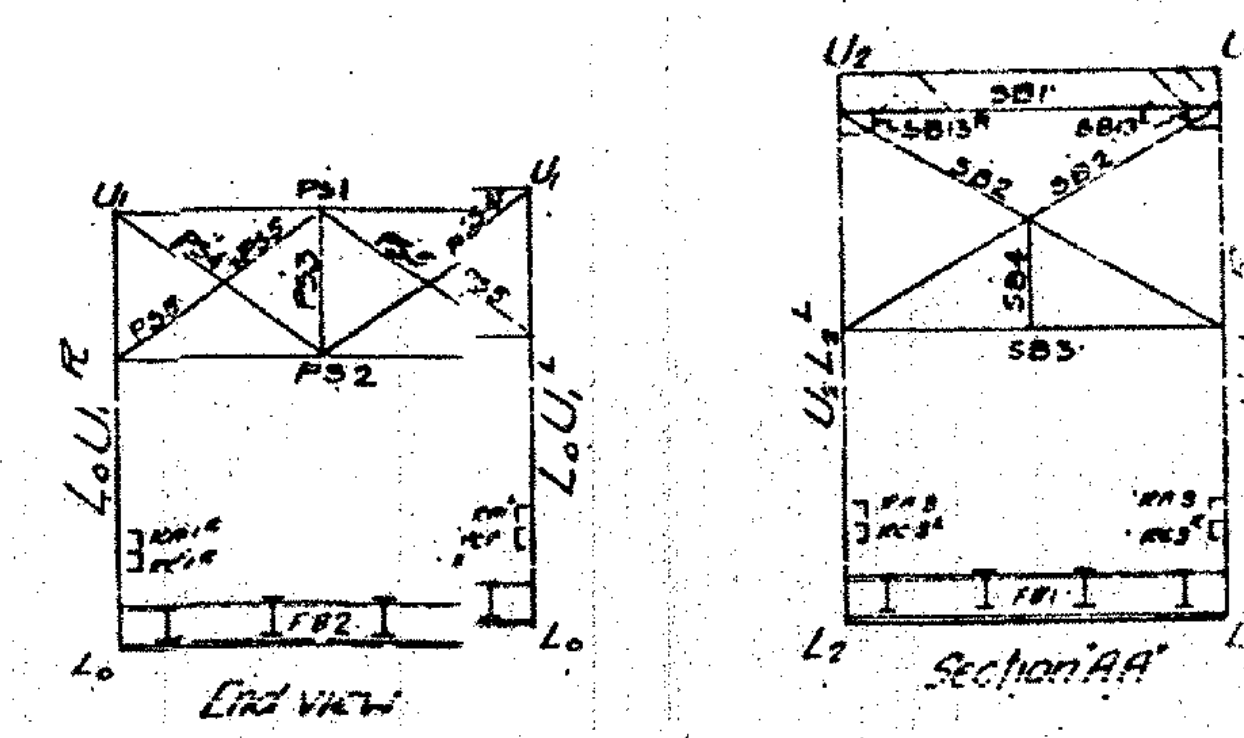
1 - F81  
1 - MPT  
1 - TPI  
4 - AB2



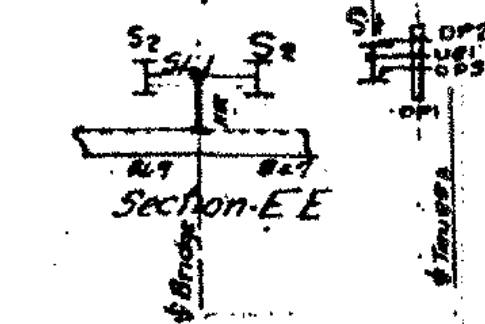
Note to erector:  
Legs of Bottom Laterals turned down



Camber Diagram - Bottom Chord  
(Before application of dead load)



1 - ES1  
1 - MPT  
1 - TPI  
4 - AB2  
All Anchor Bolts this end are  
1/2" dia. x 6" long, Hex Nut, Hex Washer - AB2  
washers - 3" x 1/2" thick, 1/2" hole.  
(For setting Anchor Bolts - see plan on Sheet F1)



LIST OF DRAWINGS

Draw No.	Description
1	Erection diagram
2	Truss End
3	Truss Int
4	Truss Cent
5	Floor System
6	Bottom Later
7	Portal
8	Sway Brac
9	Top laterals
F1	Anchor Bo

RICHMOND  
BHF 0209(7)

SHEET 19 OF 23  
FOR REFERENCE ONLY

For Reference Only  
Richmond BHF0209 (5)  
Sheet 19 of 50

BETHLEHEM STEEL  
Erection and Erection Dept.

DETAIL OF Erection Di.  
STRUCTURE: Richmond Village Br.  
CUSTOMER: James F. Co.

SHOP PAINT  
MATERIALS: OPEN HOLE

DRAWN BY: ERK  
DATE: 3/19/28  
CHECKED BY: HPH

FILE: F 7363 CONT: E E 7

Field Point  
Two coats as per specification