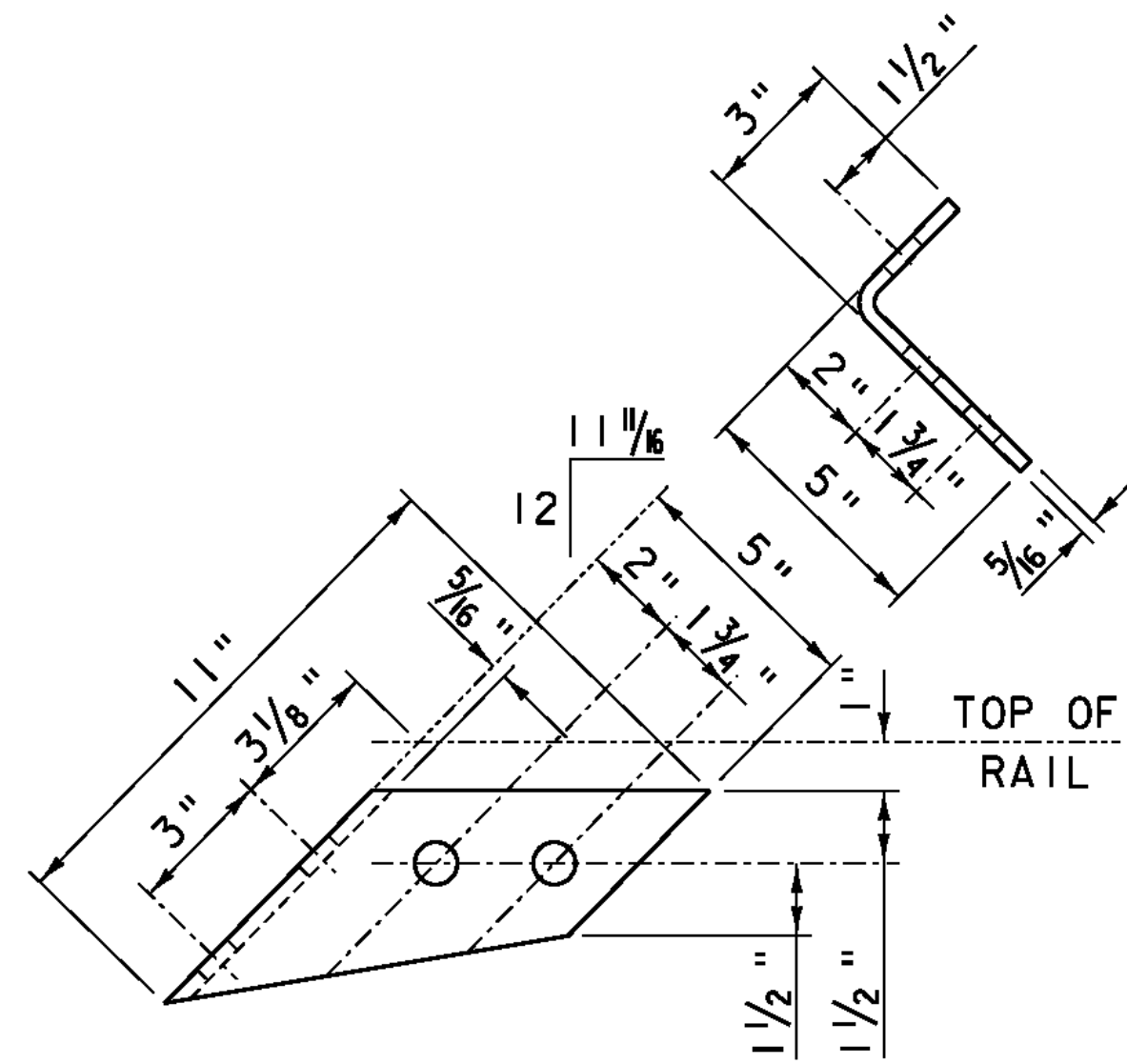


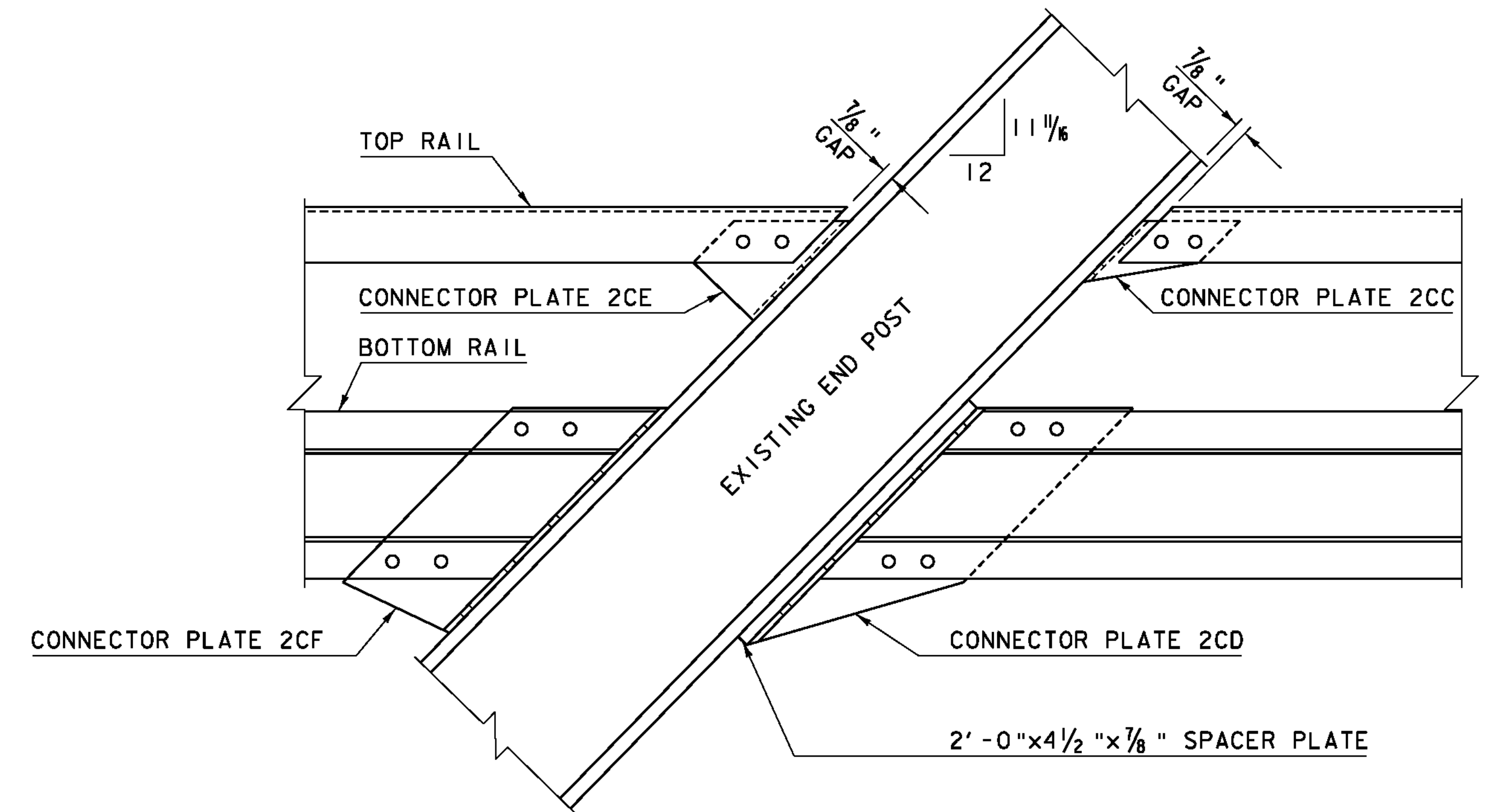
**CONNECTOR PLATE 2CE**

L 6x3 1/2 x 5/16 - 0'-10" LONG  
SCALE 3" = 1'-0"



**CONNECTOR PLATE 2CC**

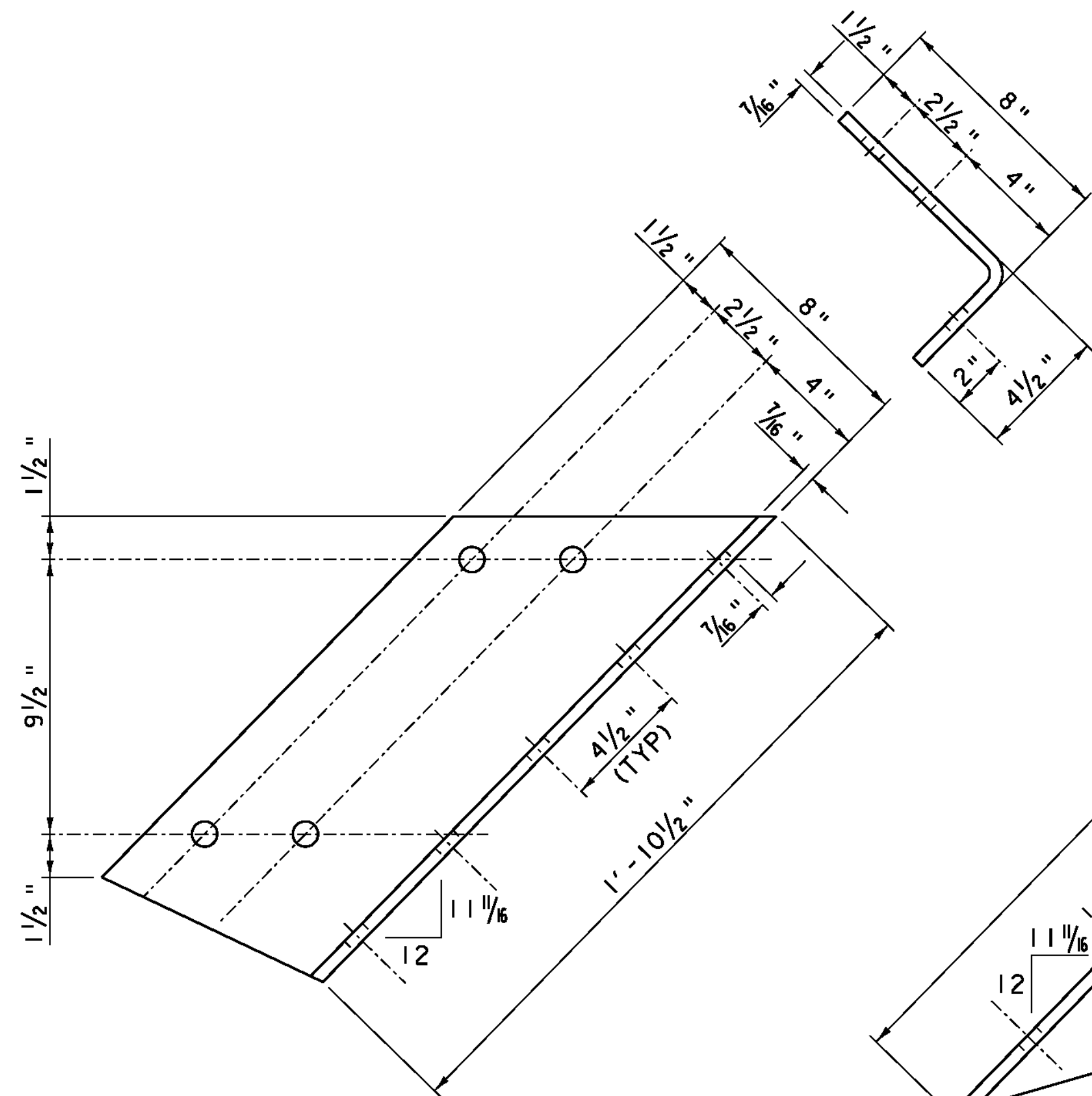
L 5x3x5/16 - 0'-11" LONG  
SCALE 3" = 1'-0"



**RAIL CONNECTOR DETAIL**

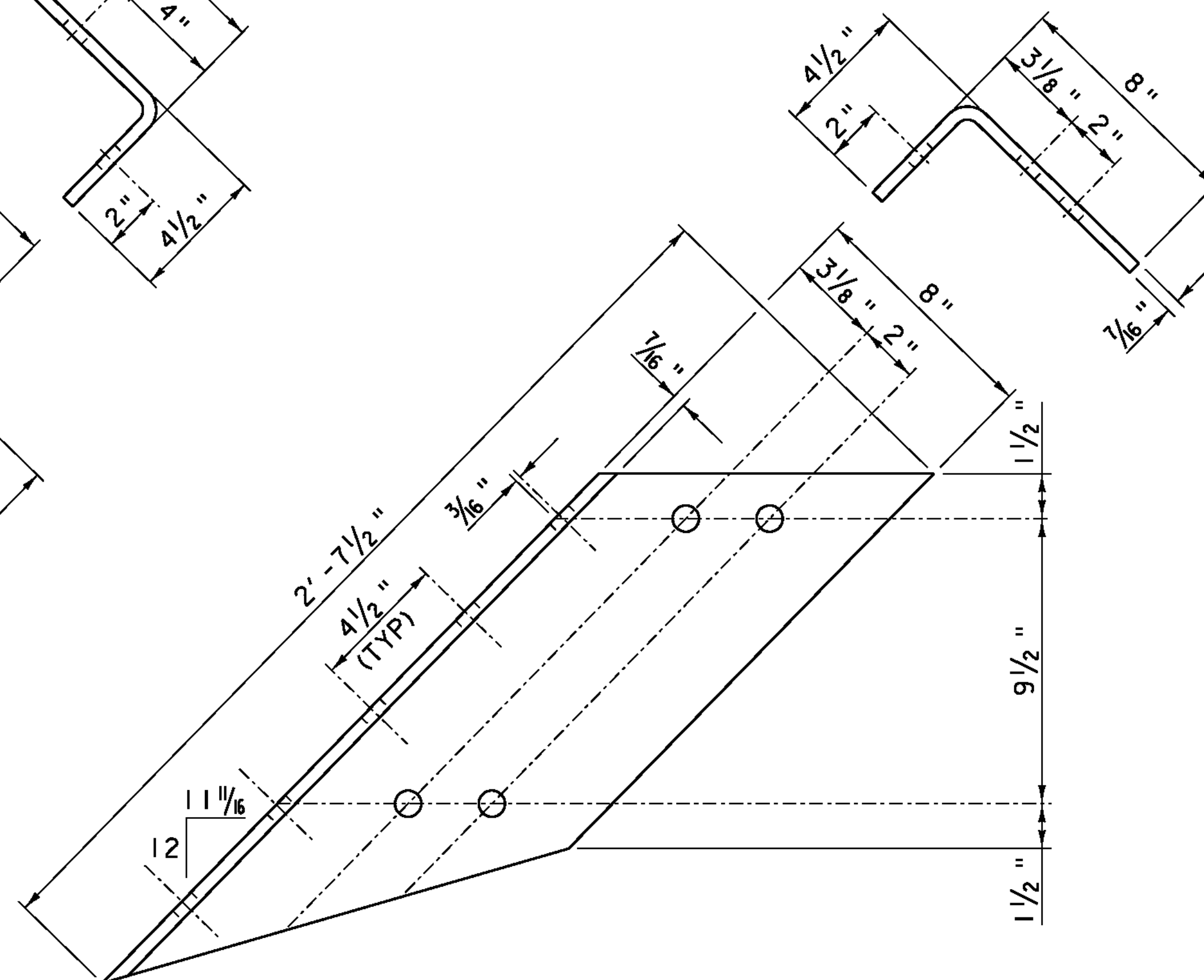
N. T. S.

THE DETAILS ON THIS SHEET ARE INTENDED TO CLARIFY THE INFORMATION FROM THE REFERENCE SHEETS. THE INTENT IS TO USE NEW MATERIAL TO DUPLICATE THE EXISTING CONNECTION. ANY CONFLICTS BETWEEN THIS INFORMATION AND THE REFERENCE PLANS SHALL BE BROUGHT TO THE ATTENTION OF THE RESIDENT ENGINEER IMMEDIATELY.



**CONNECTOR PLATE 2CF**

L 8x4 1/2 x 7/16 - 1'-10 1/2" LONG  
SCALE 3" = 1'-0"

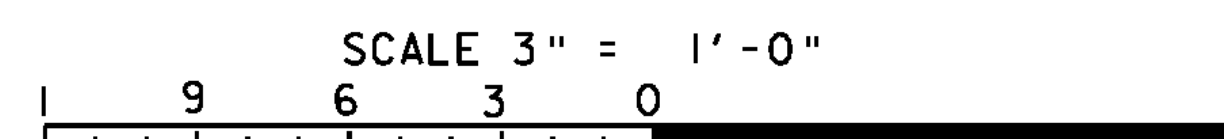


**CONNECTOR PLATE 2CD**

L 8x4 1/2 x 7/16 - 2'-7 1/2" LONG  
SCALE 3" = 1'-0"

**NOTE:**

ALL HOLES SHALL BE FIELD DRILLED UNLESS OTHERWISE NOTED.



RICHMOND  
BHF 0209(7)  
SHEET 17 OF 23  
FOR REFERENCE ONLY

**STATE OF VERMONT  
AGENCY OF TRANSPORTATION**

Town Of	RICHMOND	Bridge No.	31
Highway No.	T.H. #1	Log Sta.	
		Surv. Sta.	
TOWN HIGHWAY #1 OVER WINOOSKI RIVER			
<b>RAIL CONNECTOR DETAILS</b>			
Designed By	C.P. WILLIAMS	Drawn By	D.D. BEARD
Checked By	C.P. WILLIAMS	Date	12/19/08
		Bridge Design Supervisor	G. BOGUE
		Date	01/09
PROJECT	RICHMOND	PROJECT NO.	BHF 0209(5)
CAD Dwg:	...drawing\08J132_RailIng.dgn	Plot Date:	8/17/2010
Bridge Sheet No.		Sheet	30 of 50