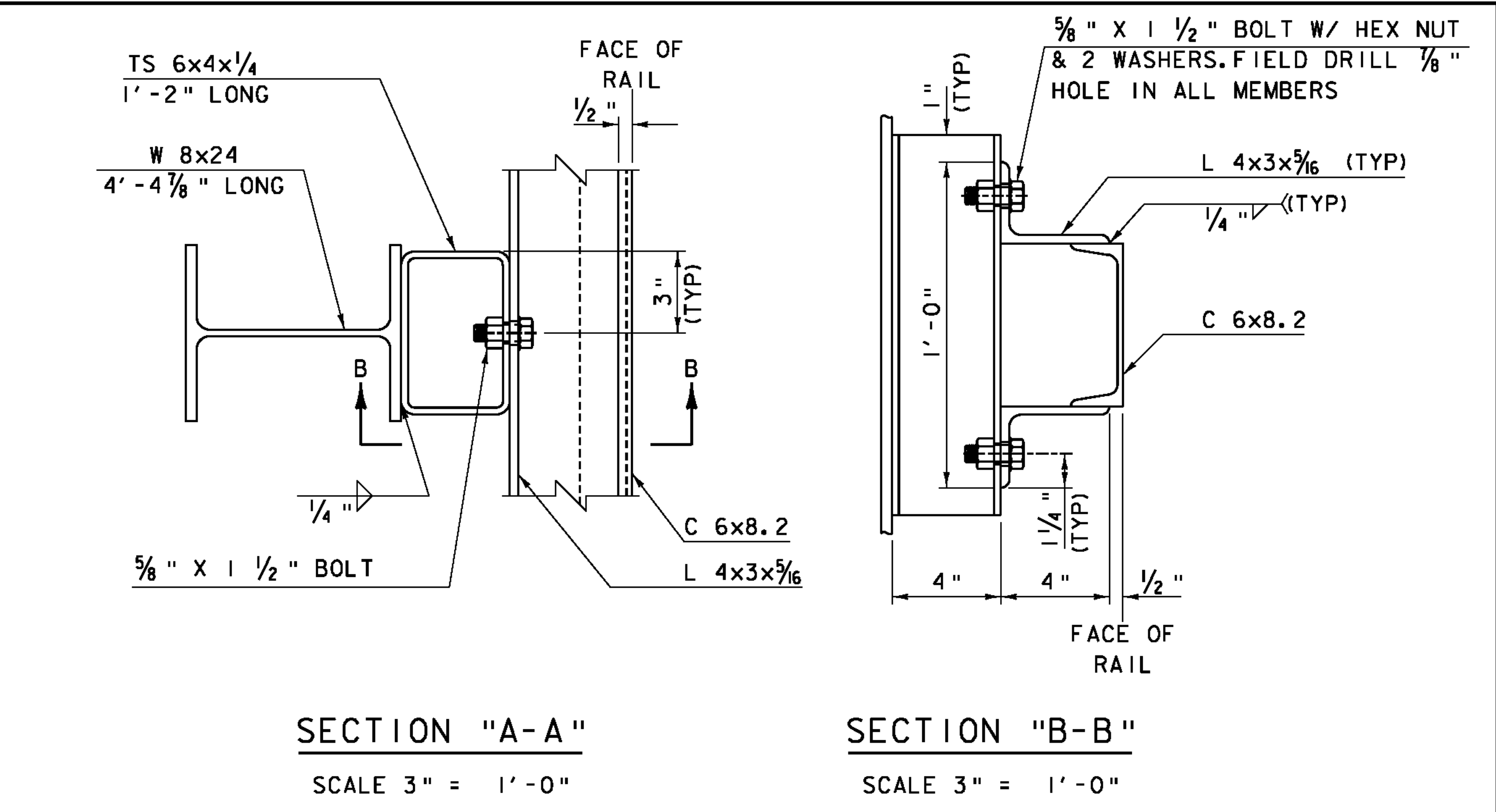


CURB & RAILING DETAIL AT BULB-OUT
SCALE 1" = 1'-0"

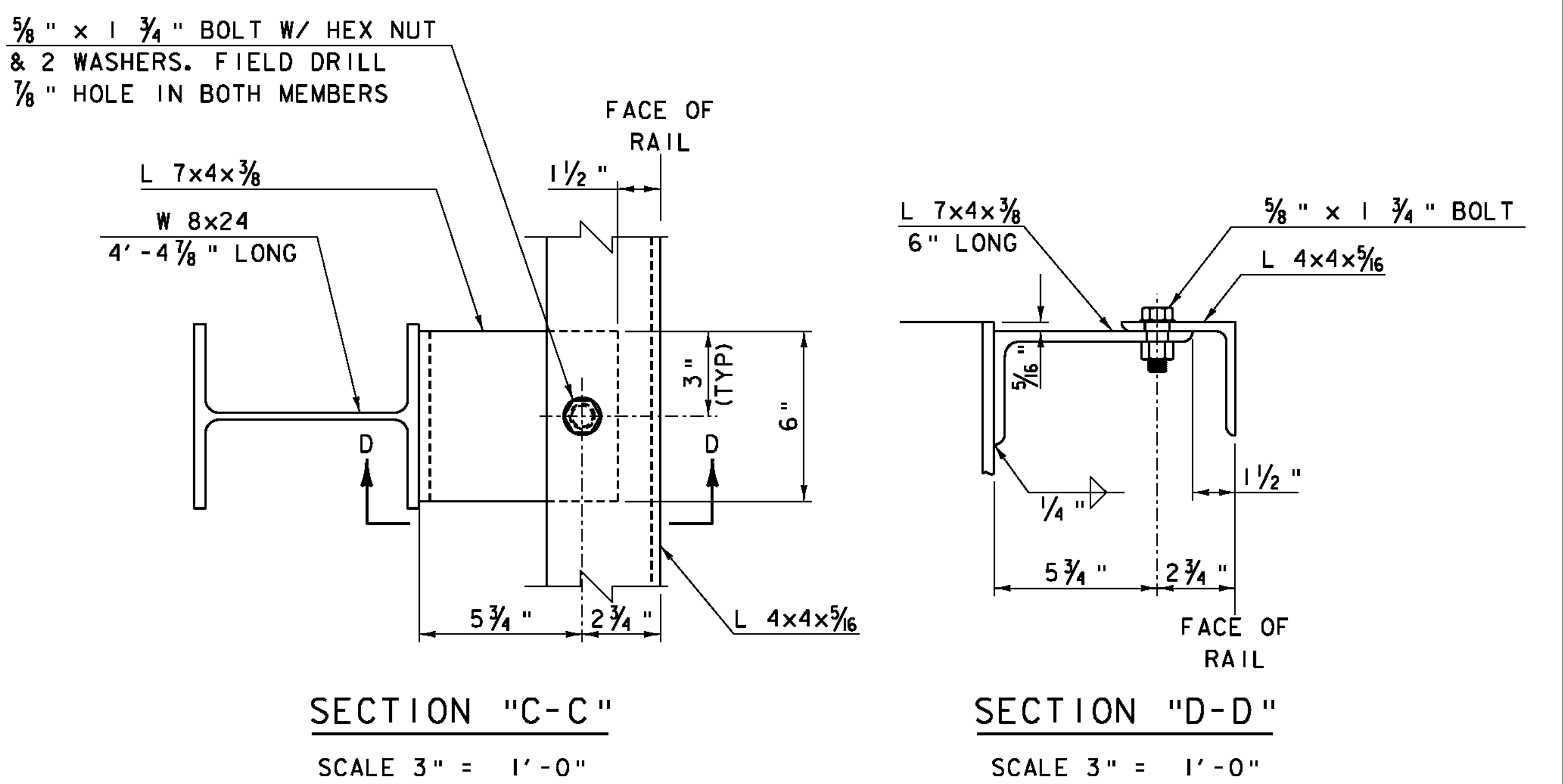
CURB BULB-OUT PLAN VIEW
SCALE 1" = 1'-0"

*REINFORCING STEEL IN THE DECK WILL BE DETERMINED BY THE GRID MANUFACTURER



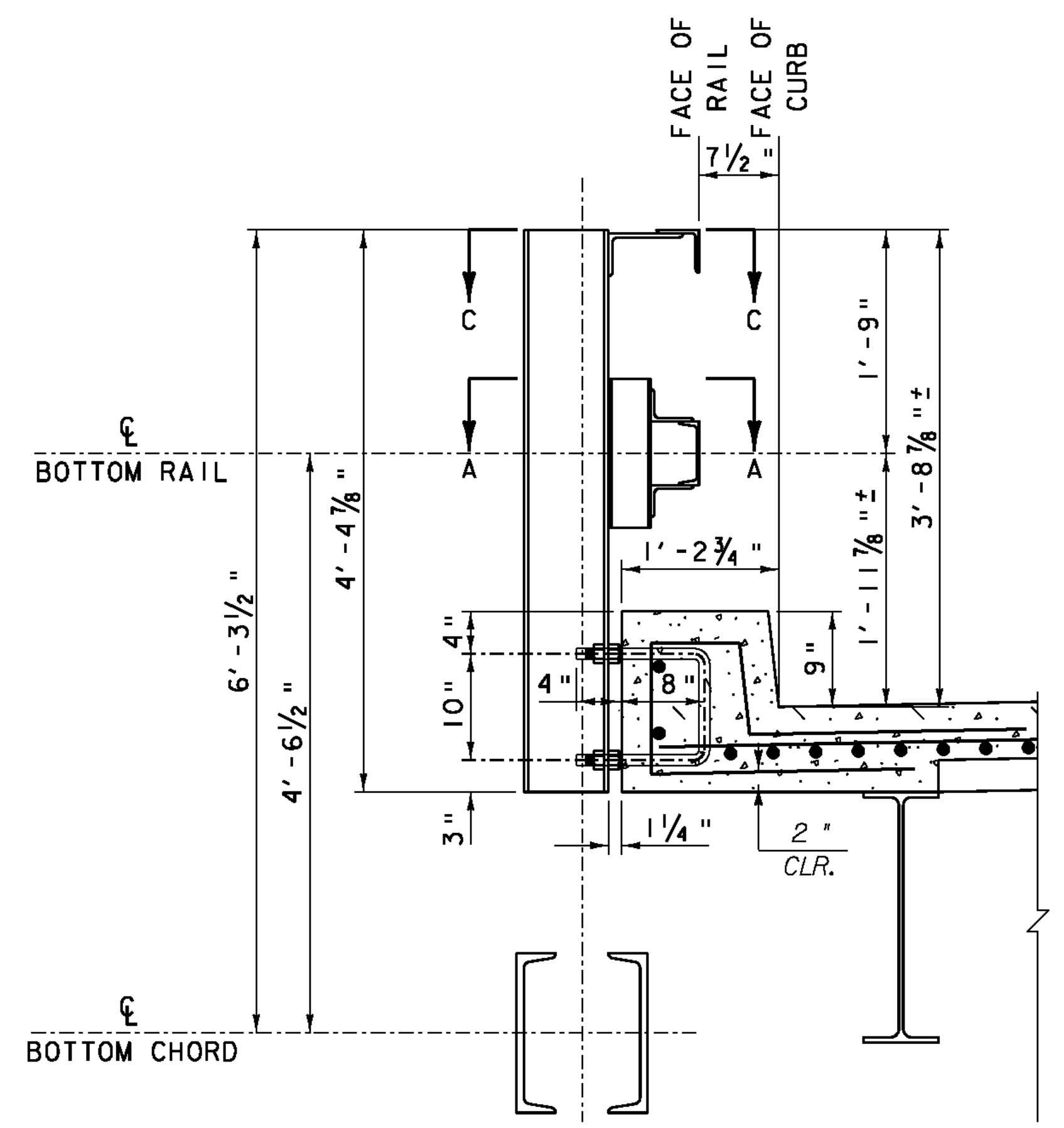
SECTION "A-A"
SCALE 3" = 1'-0"

SECTION "B-B"
SCALE 3" = 1'-0"

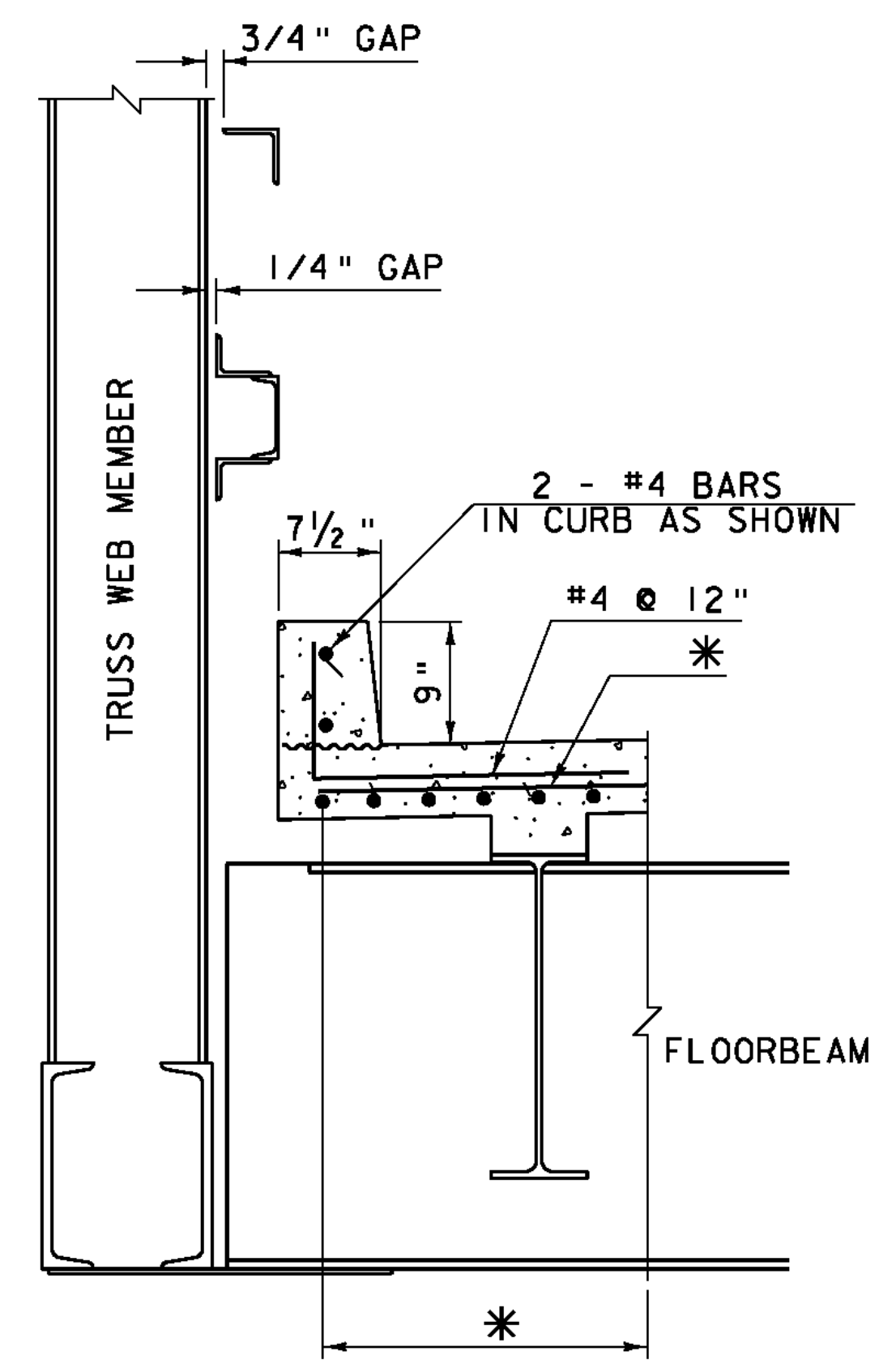


SECTION "C-C"
SCALE 3" = 1'-0"

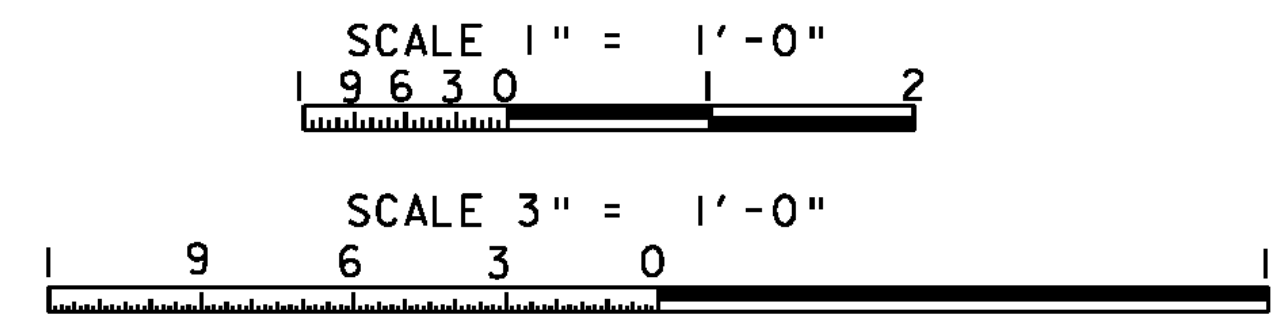
SECTION "D-D"
SCALE 3" = 1'-0"



CURB & RAILING DIMENSIONS AT BULB-OUT
SCALE 1" = 1'-0"



TYPICAL CURB DETAIL
SCALE 1" = 1'-0"



RICHMOND
BHF 0209(7)
SHEET 16 OF 23
FOR REFERENCE ONLY

STATE OF VERMONT AGENCY OF TRANSPORTATION	
Town Of	RICHMOND
Highway No.	T.H. #1
TOWN HIGHWAY #1 OVER WINOOSKI RIVER	
CURB AND RAILING DETAILS	
Designed By	C.P. WILLIAMS
Checked By	C.P. WILLIAMS
PROJECT	RICHMOND
CAD Dwg:	...drawing\081132_Railing.dgn
Bridge No.	31
Log Sta.	
Surv. Sta.	
Drawn By	D.D. BEARD
Date	12/10/08
Bridge Design Supervisor	G. BOGUE
PROJECT NO.	BHF 0209(5)
Plot Date:	8/17/2010
Sheet	28 of 50