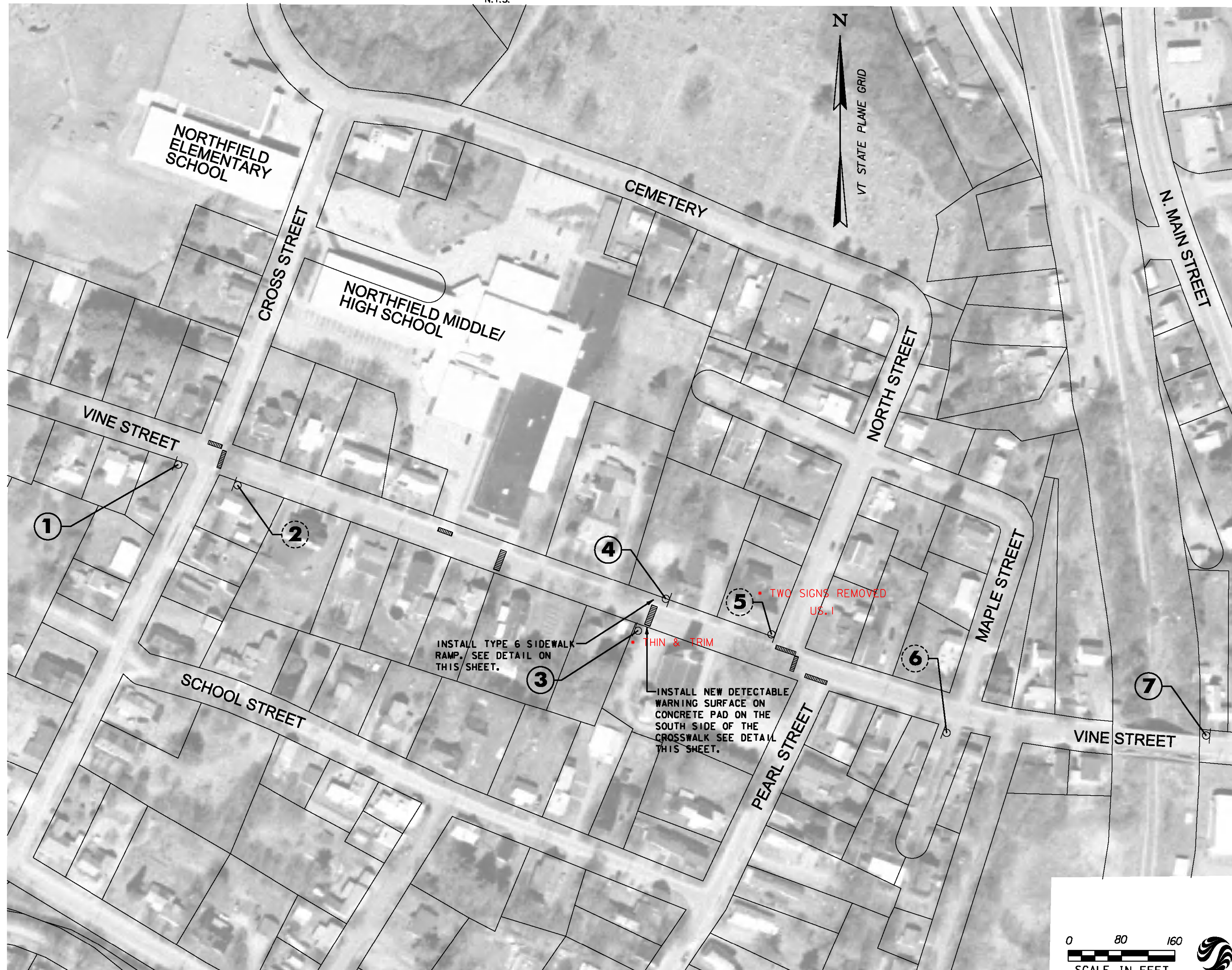
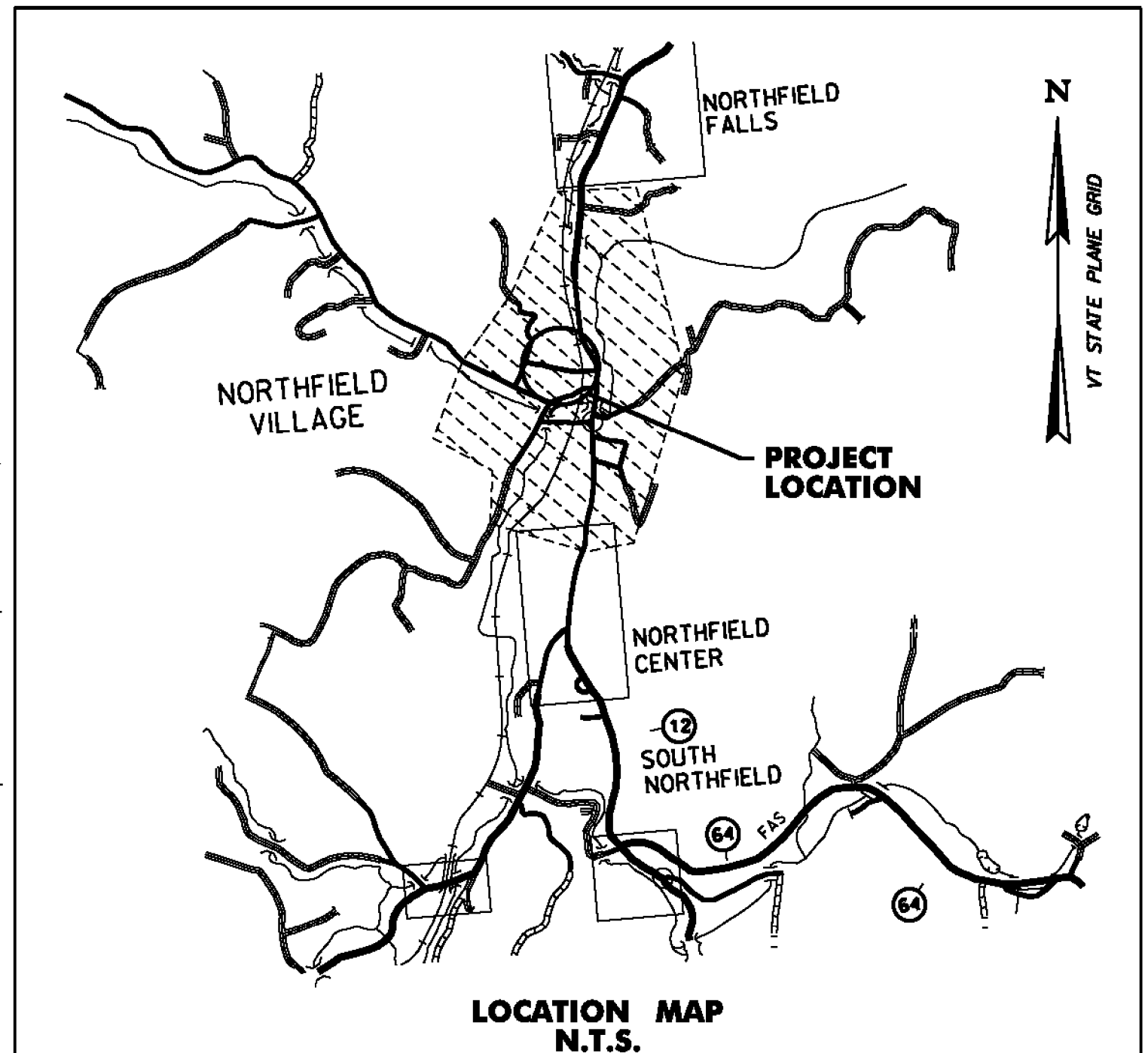


SIGN ACTIVITY

- N = NEW
- R = REMOVE
- R&S = REMOVE & SALVAGE
- S = SALVAGE SIGN
- RET = RETAIN
- B-B = BACK TO BACK



SIGN NUMBER	SIGN LEGEND	SIGN ACTIVITY	COMMENTS
1		N N	NEW SIGNS ON NEW POSTS LOCATED SOUTH OF VINE STREET, 955' WEST OF THE NORTH STREET/VINE STREET INTERSECTION.
2		R	REMOVE SIGN AND POST
3		N N	NEW SIGNS ON NEW POSTS LOCATED SOUTH OF VINE STREET, 216' WEST OF THE NORTH STREET/VINE STREET INTERSECTION. SIGN REQUIRES ANCHOR.
4		N N	NEW SIGNS ON NEW POSTS LOCATED NORTH OF VINE STREET, 192' WEST OF THE NORTH STREET/VINE STREET INTERSECTION. SIGN SHALL BE INSTALLED ON THE BACKSIDE OF THE SIDEWALK.
5		R	REMOVE SIGN AND POST
6		RET RET RET	REMOVE SCHOOL SIGN. RETAIN EXISTING STREET SIGNS AND REGULATORY SIGN.
7		N N	NEW SIGNS ON NEW POSTS LOCATED NORTH OF VINE STREET, 653' EAST OF THE NORTH STREET/VINE STREET INTERSECTION.

- NOTES:
- ALL OTHER SIGNS NOT SHOWN ARE TO REMAIN.
 - SEE NOTES SHEET NDS-1 AND TRAFFIC SIGN SUMMARY SHEETS FOR ADDITIONAL INFORMATION.
 - ROW WIDTH OF VINE STREET IS 49.5'.

LEGEND

	PROPOSED SIGN	ITEM 675.50 REMOVING SIGNS AS SHOWN - 3
	EXISTING SIGN	
	REMOVE AND REPLACE CROSSWALK PAVEMENT MARKING	

NORTHFIELD

PROJECT NAME: STATEWIDE SRTS PROJECTS
 PROJECT NUMBER: STP SRIN(25)

FILE NAME: ...\\Plotfiles\08 Northfield.dgn
 PROJECT LEADER: G. GOYETTE
 DESIGNED BY: K. RICHARDSON
 NORTHFIELD LS-4

PLOT DATE: 12/28/2012
 DRAWN BY: K. RICHARDSON
 CHECKED BY: G. GOYETTE
 SHEET 8 OF 35

