

SIGN NUMBER	SIGN LEGEND	SIGN ACTIVITY	COMMENTS
①		S N	INSTALL SALVAGED SIGN ON NEW POSTS LOCATED AT THE SAME LOCATION AS REMOVED SIGN #2. MOUNT NEW "SCHOOL" PLAQUE BELOW.
②		R	REMOVE SIGN AND POST
③	 	N	NEW SIGN AND POST LOCATED 50' WEST OF DRIVEWAY ENTRANCE TO BARRE TOWN SCHOOL PARKING LOT.
		N	NEW SOLAR-POWERED RSFS ASSEMBLY WITH BREAKAWAY BASE.
④		R	REMOVE SIGN AND POST
⑤	 	R&S R	REMOVE AND SALVAGE SIGNS AND POST. CONTRACTOR TO DELIVER SALVAGED "AHEAD" SIGN AND POST TO TOWN

SIGN NUMBER	SIGN LEGEND	SIGN ACTIVITY	COMMENTS
⑥	 	R&S R	REMOVE AND SALVAGE SIGNS AND POST. CONTRACTOR TO DELIVER SALVAGED "AHEAD" SIGN AND POST TO TOWN
⑦	 	N	NEW SIGN AND POST LOCATED NEAR THE WESTERN CORNER OF WEBSTERVILLE ROAD AND ACCESS DRIVE TO CONTI OIL TRIM OVERHEAD BRANCHES AS NECESSARY.
		N	NEW SOLAR-POWERED RSFS ASSEMBLY WITH BREAKAWAY BASE.
⑧		R	REMOVE SIGN AND POST
⑨	 	S N	INSTALL SALVAGED SIGN ON NEW POSTS LOCATED AT THE SAME LOCATION AS REMOVED SIGN #10. MOUNT NEW "SCHOOL" PLAQUE BELOW.
⑩		R	REMOVE SIGN AND POST

NOTES:

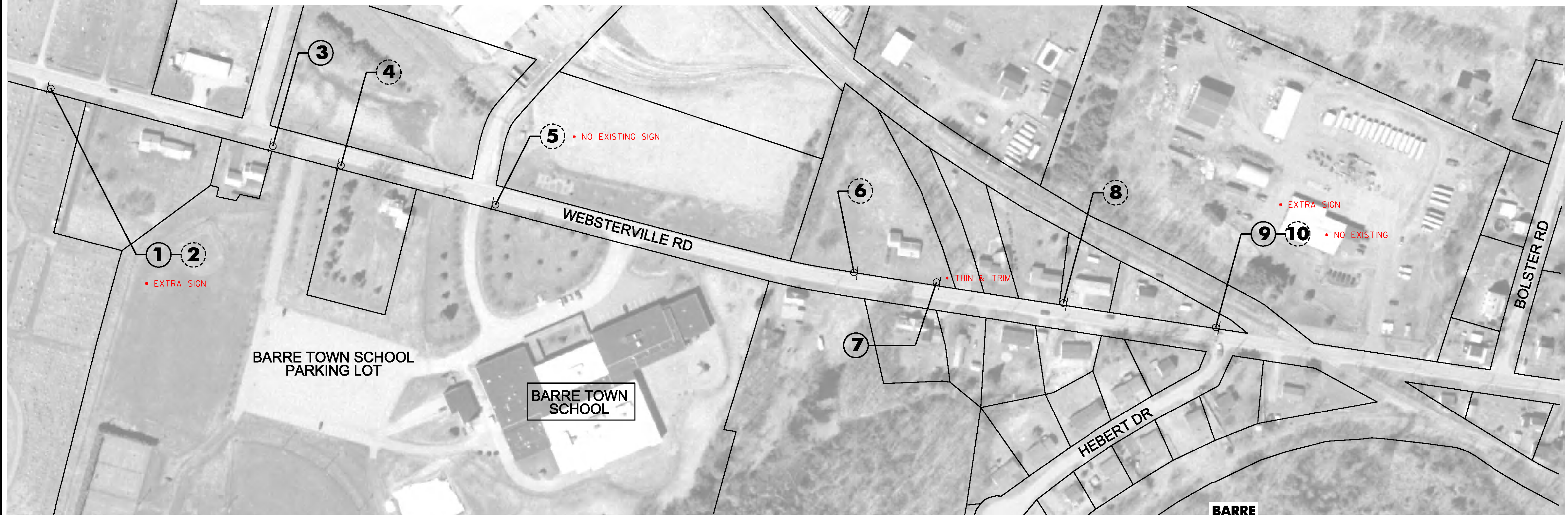
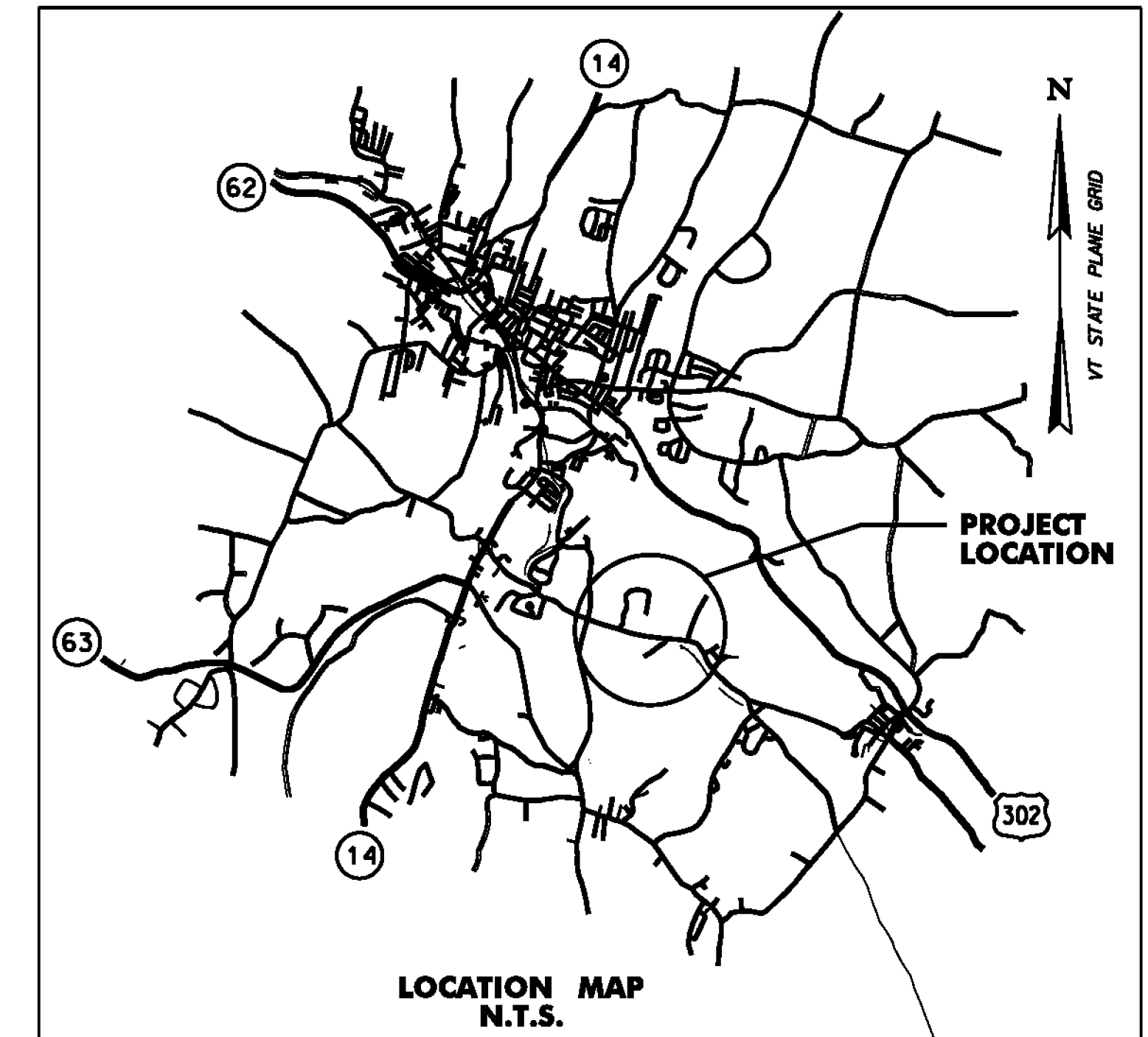
- ALL OTHER SIGNS NOT SHOWN ARE TO REMAIN.
- SEE NOTES SHEET NDS-1 AND TRAFFIC SIGN SUMMARY SHEETS FOR ADDITIONAL INFORMATION.
- ROW WIDTH OF WEBSTERVILLE ROAD IS 49.5'.
- CLEAR ZONE ALONG WEBSTERVILLE ROAD IS 7 FEET.

ITEM 675.50 REMOVING SIGNS
AS SHOWN - 87

ITEM 675.60 FRECTING SALVAGED SIGNS
AS SHOWN - 20

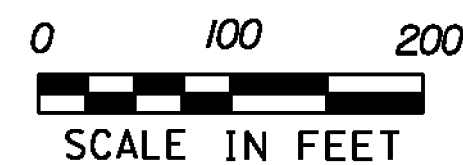
SIGN ACTIVITY

- N = NEW
- R = REMOVE
- R&S = REMOVE & SALVAGE
- S = SALVAGE SIGN
- RET = RETAIN
- B-B = BACK TO BACK



LEGEND

- ① PROPOSED SIGN
- ② EXISTING SIGN



BARRE

PROJECT NAME: STATEWIDE SRTS PROJECTS
 PROJECT NUMBER: STP SRIN(25)
 FILE NAME: ...drawing\Plotfiles\05 Barre.dgn PLOT DATE: 12/28/2012
 PROJECT LEADER: G. GOYETTE DRAWN BY: K. RICHARDSON
 DESIGNED BY: K. RICHARDSON CHECKED BY: G. GOYETTE
 BARRE LS-1 SHEET 5 OF 35