

SIGN NUMBER	SIGN LEGEND	SIGN ACTIVITY	COMMENTS
1		R	REMOVE SIGN AND POST
2		N N	NEW SIGNS AND NEW POST IN THE SAME LOCATION AS SIGN #1.
3		R	REMOVE SIGN AND POST
4		N N	NEW SIGNS AND NEW POST IN THE SAME LOCATION AS SIGN #3.
5		N N	NEW SIGNS AND NEW POST LOCATED 6' PRIOR TO EXISTING CROSSWALK
6		N N	NEW SIGNS AND NEW POST LOCATED 6' PRIOR TO EXISTING CROSSWALK
7		N N	NEW SIGNS AND NEW POST LOCATED 6' PRIOR TO EXISTING CROSSWALK
8		R	REMOVE SIGN AND POST
9		N N	NEW SIGNS AND NEW POST IN THE SAME LOCATION AS SIGN #8
10		RET RET	RETAIN EXISTING SIGNS PROPOSED TO BE INSTALLED BY THE HIGH RISK RURAL ROADS PROJECT.
11		N	LOCATED 400' FROM CENTERLINE INTERSECTION OF MAIN AND GROVE STREETS.
		N	NEW SOLAR-POWERED RSFS ASSEMBLY
12		RET RET	RETAIN EXISTING SIGNS PROPOSED TO BE INSTALLED BY THE HIGH RISK RURAL ROADS PROJECT.
13		R	REMOVE SIGN PROPOSED TO BE INSTALLED BY THE HIGH RISK RURAL ROADS PROJECT.
14		N	NEW SIGN ON NEW POST.
		N	NEW SOLAR-POWERED RSFS ASSEMBLY WITH BREAKAWAY BASE.

SIGN NUMBER	SIGN LEGEND	SIGN ACTIVITY	COMMENTS
15		RET RET	RETAIN EXISTING SIGNS PROPOSED TO BE INSTALLED BY THE HIGH RISK RURAL ROADS PROJECT.
16		RET RET	RETAIN EXISTING SIGNS PROPOSED TO BE INSTALLED BY THE HIGH RISK RURAL ROADS PROJECT.
17		RET RET	RETAIN EXISTING SIGNS PROPOSED TO BE INSTALLED BY THE HIGH RISK RURAL ROADS PROJECT.
18		R	REMOVE SIGN AND POST
19		N N	NEW SIGNS AND NEW POSTS IN THE SAME LOCATION AS SIGN #18.
20		R	REMOVE SIGN AND POST
21		N N	NEW SIGNS AND NEW POSTS IN THE SAME LOCATION AS SIGN #20.
22		R	REMOVE SIGN AND POST
23		N N	NEW SIGNS AND NEW POSTS IN THE SAME LOCATION AS SIGN #22.
24		R R	REMOVE SIGNS AND POST
25		N N	NEW SIGNS AND NEW POSTS IN THE SAME LOCATION AS SIGN #24.
26		R	REMOVE SIGN AND POST
27		N N	NEW SIGNS AND NEW POSTS IN THE SAME LOCATION AS SIGN #26.
28		R	REMOVE SIGN AND POST
29		N N	NEW SIGNS AND NEW POSTS IN THE SAME LOCATION AS SIGN #28.

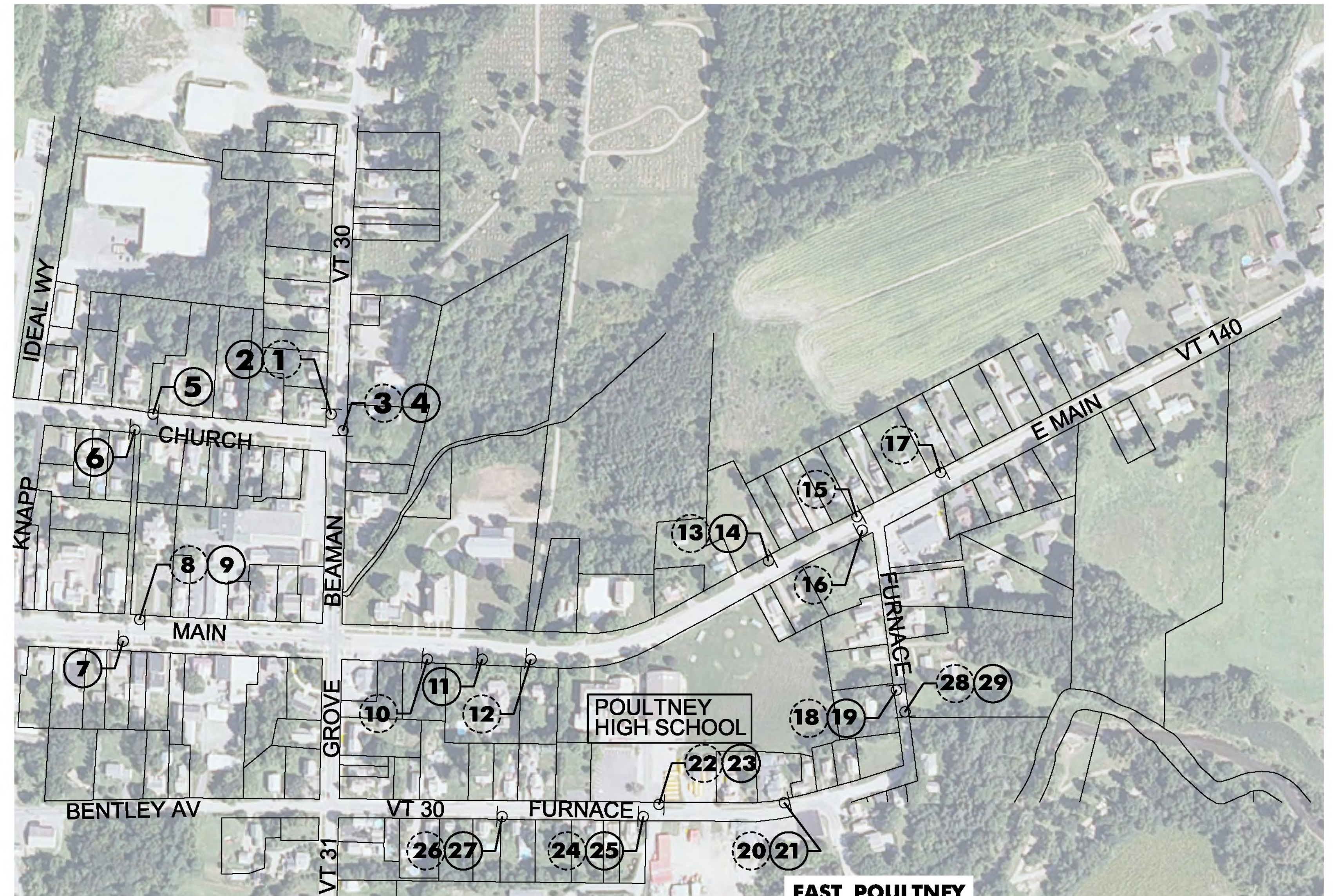
ITEM 675.50 REMOVING SIGNS AS SHOWN - 11

SIGN ACTIVITY

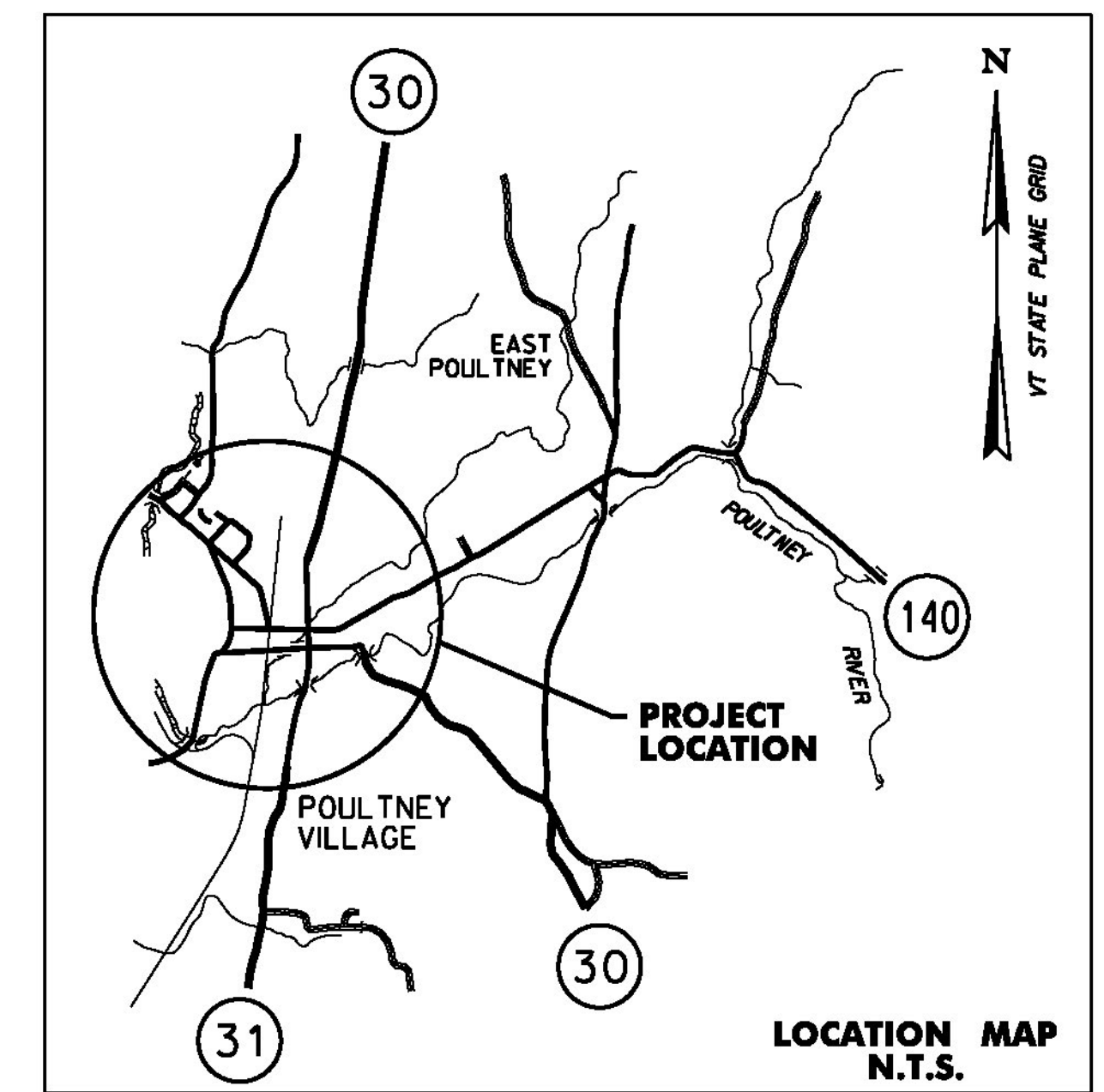
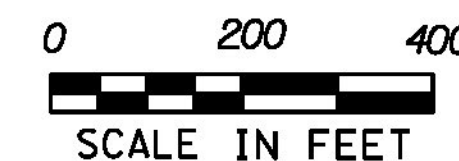
- N = NEW
- R = REMOVE
- R&S = REMOVE & SALVAGE
- S = SALVAGE SIGN
- RET = RETAIN
- B-B = BACK TO BACK

LEGEND

- PROPOSED SIGN
- EXISTING SIGN



- NOTES:
- ALL OTHER SIGNS NOT SHOWN ARE TO REMAIN.
 - SEE NOTES SHEET NDS-1 AND TRAFFIC SIGN SUMMARY SHEETS FOR ADDITIONAL INFORMATION.
 - ROW WIDTH OF MAIN STREET IS 99.0'.
 - ROW WIDTH OF EAST MAIN STREET IS 66.0'.
 - ROW WIDTH FOR ALL OTHER STREETS IS 49.5'.
 - CLEAR ZONE IS 3 FEET BEHIND FACE OF CURB AND 7 FEET IN UNCURBED AREAS ON EAST MAIN STREET.



EAST POULTNEY

PROJECT NAME: STATEWIDE SRTS PROJECTS
PROJECT NUMBER: STP SRIN(25)

FILE NAME: ...Plotfiles\10 Poultney East.dgn PLOT DATE: 12/28/2012
PROJECT LEADER: G. GOYETTE DRAWN BY: K. RICHARDSON
DESIGNED BY: K. RICHARDSON CHECKED BY: G. GOYETTE
POULTNEY EAST LS-6 SHEET 10 OF 35