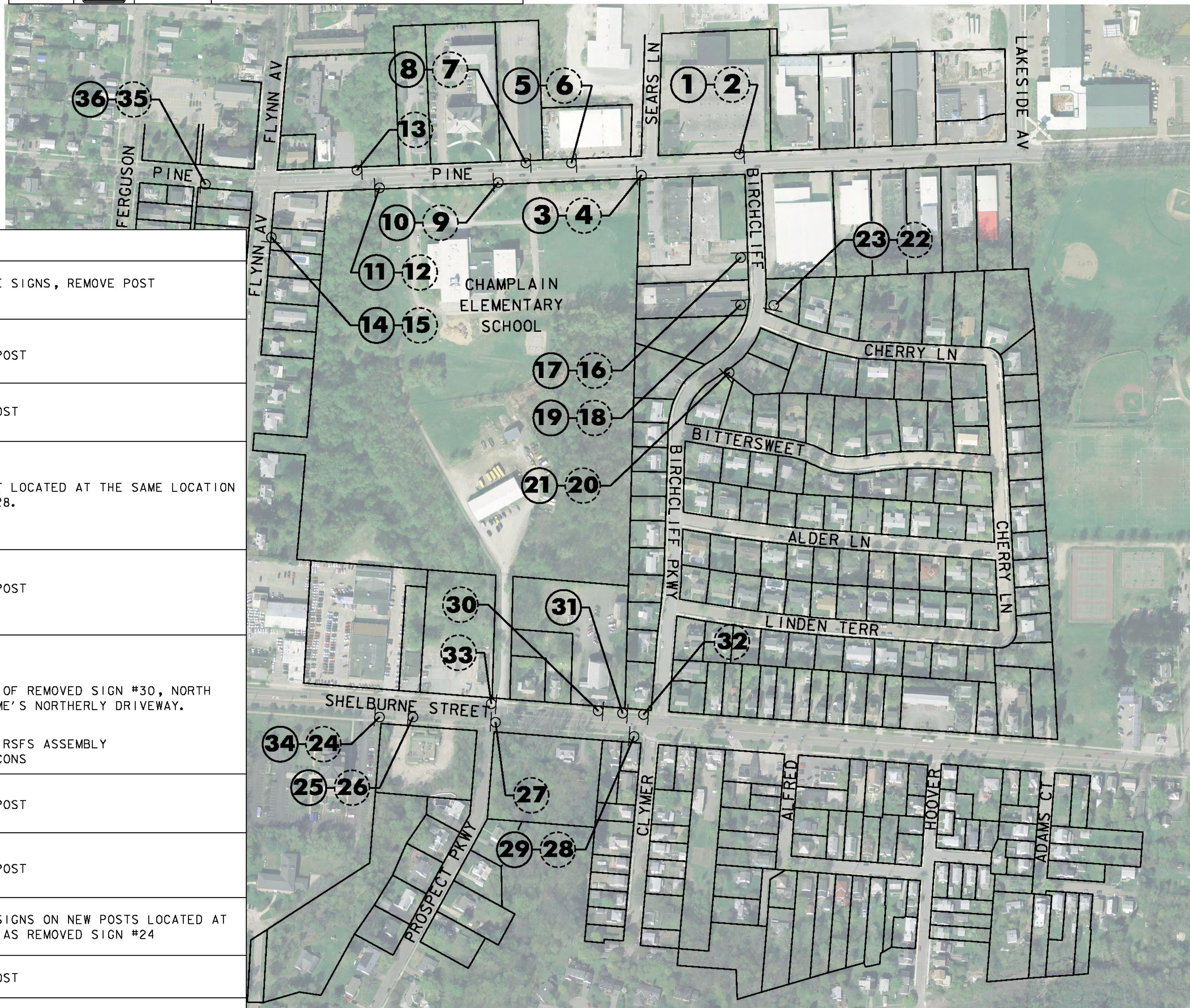


SIGN NUMBER	SIGN LEGEND	SIGN ACTIVITY	COMMENTS
1		N	NEW SIGNS AND POSTS IN SAME LOCATION AS REMOVED SIGN #2.
2		R	REMOVE SIGNS AND POST. CONTRACTOR TO DELIVER "NO PARKING" AND "BUS STOP" SIGNS TO THE CITY, AND DISPOSE OF THE "SLOW SCHOOL ZONE" SIGN.
3		N	NEW SIGN AND POST IN SAME LOCATION AS REMOVED SIGN #4
4		R	REMOVE SIGN AND POST

SIGN NUMBER	SIGN LEGEND	SIGN ACTIVITY	COMMENTS
5		N	NEW SIGN ON EXISTING POST WITH NEW FLASHING BEACONS AT SAME LOCATION AS REMOVED SIGN #6.
6		R	REMOVE SIGN AND FLASHING BEACONS. RETAIN POST.
7		R	REMOVE SIGNS AND POST. CONTRACTOR TO DELIVER "BUS STOP" SIGN TO THE CITY, AND DISPOSE OF THE PEDESTRIAN CROSSING SIGN.

SIGN NUMBER	SIGN LEGEND	MUTCD SIGN ID	COMMENTS
8		N	NEW SIGNS AND POSTS LOCATED 15' SOUTH OF REMOVED SIGN #7.
9		R	REMOVE SIGNS AND POST. CONTRACTOR TO DELIVER "NO PARKING" SIGN TO THE CITY.
10		N	NEW SIGNS AND POSTS IN SAME LOCATION AS REMOVED SIGN #9.
11		N	NEW SIGN ON EXISTING UTILITY POLE WITH NEW FLASHING BEACONS IN THE SAME LOCATION AS REMOVED SIGN #12
12		R	REMOVE SIGN AND FLASHING BEACONS. RETAIN POLE MOUNT.
13		RET	RETAIN SIGNS AND POST
14		N	NEW SIGNS AND POSTS IN SAME LOCATION AS REMOVED SIGN #15.
15		R	REMOVE SIGNS AND POST
16		R	REMOVE SIGNS AND POST
17		N	NEW SIGNS AND POSTS LOCATED AT THE SAME LOCATION AS REMOVED SIGN #16.
18		R	REMOVE SIGN AND POST
19		N	NEW SIGNS AND POSTS LOCATED AT THE SAME LOCATION AS REMOVED SIGN #18.
20		R	REMOVE SIGNS AND POST
21		N	NEW SIGNS AND POSTS LOCATED AT THE SAME LOCATION AS REMOVED SIGN #20.
22		R	REMOVE SIGNS AND POST
23		N	NEW SIGNS AND POSTS LOCATED AT THE SAME LOCATION AS REMOVED SIGN #22.
24		R	REMOVE SIGNS AND POST
25		N	NEW SIGNS AND POST LOCATED AT THE SAME LOCATION AS REMOVED SIGN #26.
		N	NEW SOLAR-POWERED RSFS ASSEMBLY WITH FLASHING BEACONS

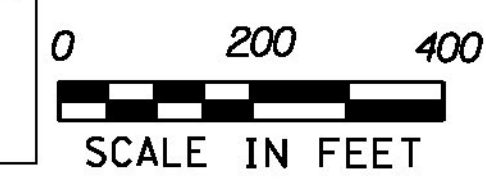
SIGN NUMBER	SIGN LEGEND	SIGN ACTIVITY	COMMENTS
26		R&S	REMOVE AND SALVAGE SIGNS, REMOVE POST
27		RET	RETAIN SIGNS AND POST
28		R	REMOVE SIGN AND POST
29		N	NEW SIGNS AND POST LOCATED AT THE SAME LOCATION AS REMOVED SIGN #28.
30		R	REMOVE SIGNS AND POST
31		N	LOCATED 70' NORTH OF REMOVED SIGN #30, NORTH OF THE FUNERAL HOME'S NORTHERLY DRIVEWAY.
		N	NEW SOLAR-POWERED RSFS ASSEMBLY WITH FLASHING BEACONS
32		RET	RETAIN SIGNS AND POST
33		RET	RETAIN SIGNS AND POST
34		S	INSTALL SALVAGED SIGNS ON NEW POSTS LOCATED AT THE SAME LOCATION AS REMOVED SIGN #24
35		R	REMOVE SIGN AND POST
36		N	NEW SIGNS AND POSTS LOCATED AT THE SAME LOCATION AS REMOVED SIGN #35



- NOTES:**
- ALL OTHER SIGNS NOT SHOWN ARE TO REMAIN.
  - SEE NOTES SHEET NDS-1 AND TRAFFIC SIGN SUMMARY SHEETS FOR ADDITIONAL INFORMATION.
  - ROW WIDTH OF PINE STREET AND FLYNN AV IS 66'.
  - ROW WIDTH OF SHELBURNE STREET IS 99'.
  - ROW WIDTH OF BIRCHCLIFF PARKWAY IS 49.5'.
  - CLEAR ZONE ON SHELBURNE ST. IS 3 FEET BEHIND FACE OF CURB.

**SIGN ACTIVITY**

N	= NEW
R	= REMOVE
R&S	= REMOVE & SALVAGE
S	= SALVAGE SIGN
RET	= RETAIN
B-B	= BACK TO BACK



ITEM 675.50 REMOVING SIGNS AS SHOWN - 29  
ITEM 675.60 ERECTING SALVAGED SIGNS AS SHOWN - 2

**LEGEND**

	PROPOSED SIGN
	EXISTING SIGN

**BURLINGTON**

PROJECT NAME: STATEWIDE SRTS PROJECTS  
PROJECT NUMBER: STP SRIN(25)

FILE NAME: ...Plotfiles\06 Champlain.dgn  
PROJECT LEADER: G. GOYETTE  
DESIGNED BY: K. RICHARDSON  
BURLINGTON LS-2

PLOT DATE: 12/28/2012  
DRAWN BY: K. RICHARDSON  
CHECKED BY: G. GOYETTE  
SHEET 6 OF 35

