

SIGN NUMBER	SIGN LEGEND	SIGN ACTIVITY	COMMENTS
1		S N	INSTALL SALVAGED SIGN ON NEW POSTS LOCATED AT THE SAME LOCATION AS REMOVED SIGN #2. MOUNT NEW "SCHOOL" PLAQUE BELOW.
2		R	REMOVE SIGN AND POST
3		N	NEW SIGN AND POST LOCATED 50' WEST OF DRIVEWAY ENTRANCE TO BARRE TOWN SCHOOL PARKING LOT.
		N	NEW SOLAR-POWERED RSFS ASSEMBLY WITH BREAKAWAY BASE.
4		R	REMOVE SIGN AND POST
5		R&S R	REMOVE AND SALVAGE SIGNS AND POST. CONTRACTOR TO DELIVER SALVAGED "AHEAD" SIGN AND POST TO TOWN

SIGN NUMBER	SIGN LEGEND	SIGN ACTIVITY	COMMENTS
6		R&S R	REMOVE AND SALVAGE SIGNS AND POST. CONTRACTOR TO DELIVER SALVAGED "AHEAD" SIGN AND POST TO TOWN
7		N	NEW SIGN AND POST LOCATED NEAR THE WESTERN CORNER OF WEBSTERVILLE ROAD AND ACCESS DRIVE TO CONTI OIL TRIM OVERHEAD BRANCHES AS NECESSARY.
		N	NEW SOLAR-POWERED RSFS ASSEMBLY WITH BREAKAWAY BASE.
8		R	REMOVE SIGN AND POST
9		S N	INSTALL SALVAGED SIGN ON NEW POSTS LOCATED AT THE SAME LOCATION AS REMOVED SIGN #10. MOUNT NEW "SCHOOL" PLAQUE BELOW.
10		R	REMOVE SIGN AND POST

NOTES:

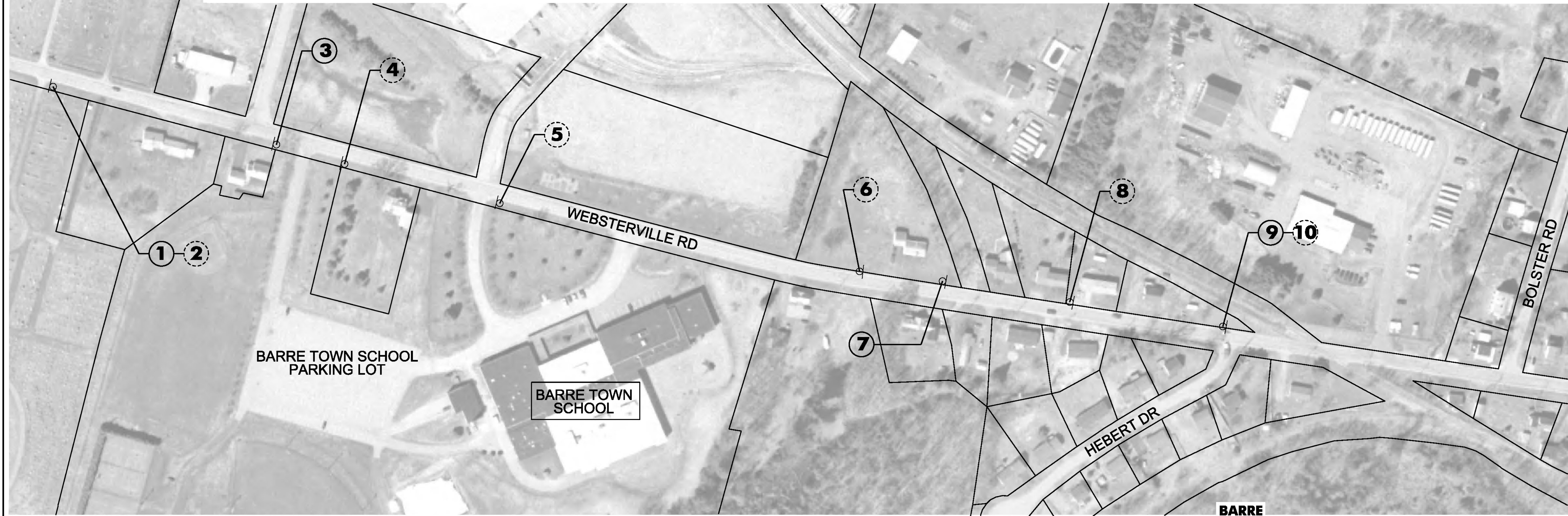
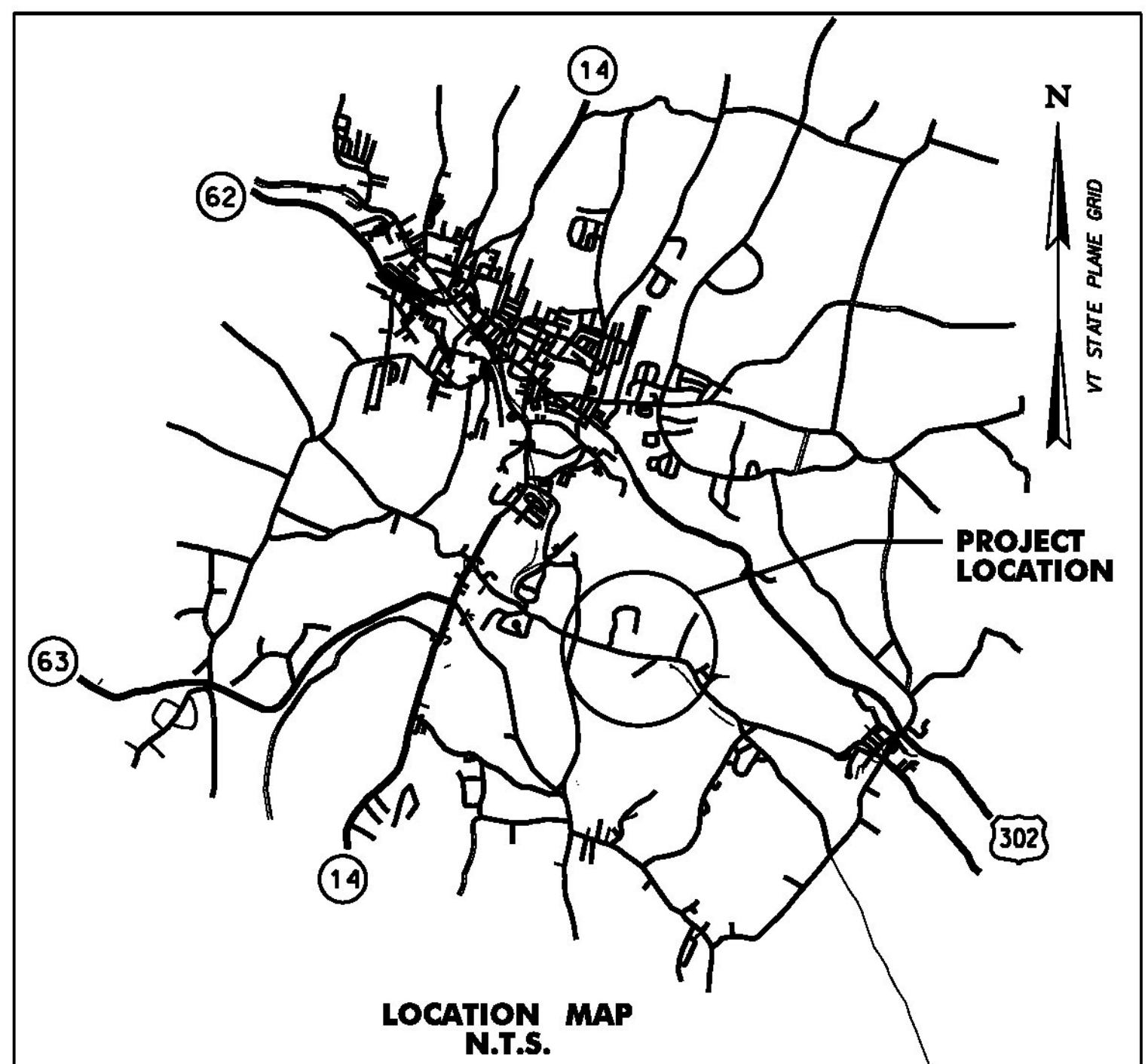
1. ALL OTHER SIGNS NOT SHOWN ARE TO REMAIN.
2. SEE NOTES SHEET NDS-1 AND TRAFFIC SIGN SUMMARY SHEETS FOR ADDITIONAL INFORMATION.
3. ROW WIDTH OF WEBSTERVILLE ROAD IS 49.5'.
4. CLEAR ZONE ALONG WEBSTERVILLE ROAD IS 7 FEET.

ITEM 675.50 REMOVING SIGNS
AS SHOWN - 8

ITEM 675.60 ERECTING SALVAGED SIGNS
AS SHOWN - 2

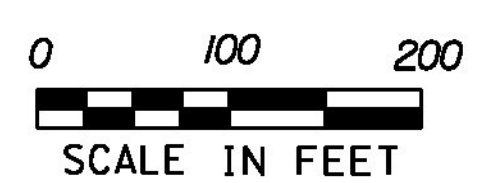
SIGN ACTIVITY

N	= NEW
R	= REMOVE
R&S	= REMOVE & SALVAGE
S	= SALVAGE SIGN
RET	= RETAIN
B-B	= BACK TO BACK



LEGEND

1	PROPOSED SIGN
2	EXISTING SIGN



BARRE

PROJECT NAME: STATEWIDE SRTS PROJECTS
PROJECT NUMBER: STP SRIN(25)

FILE NAME: ...drawing\Plotfiles\05 Barre.dgn PLOT DATE: 12/28/2012
PROJECT LEADER: G. GOYETTE DRAWN BY: K. RICHARDSON
DESIGNED BY: K. RICHARDSON CHECKED BY: G. GOYETTE
BARRE LS-1 SHEET 5 OF 35