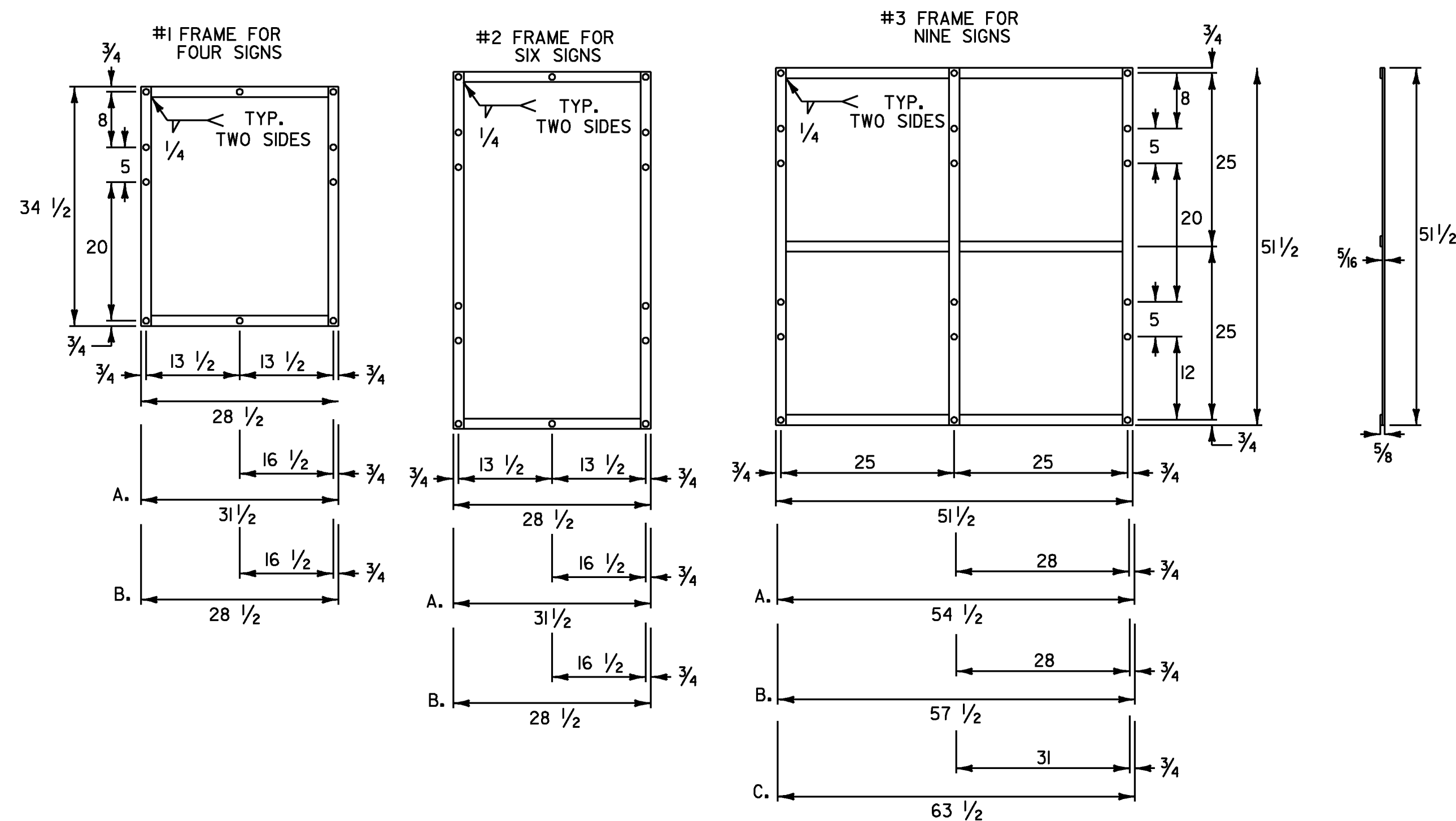


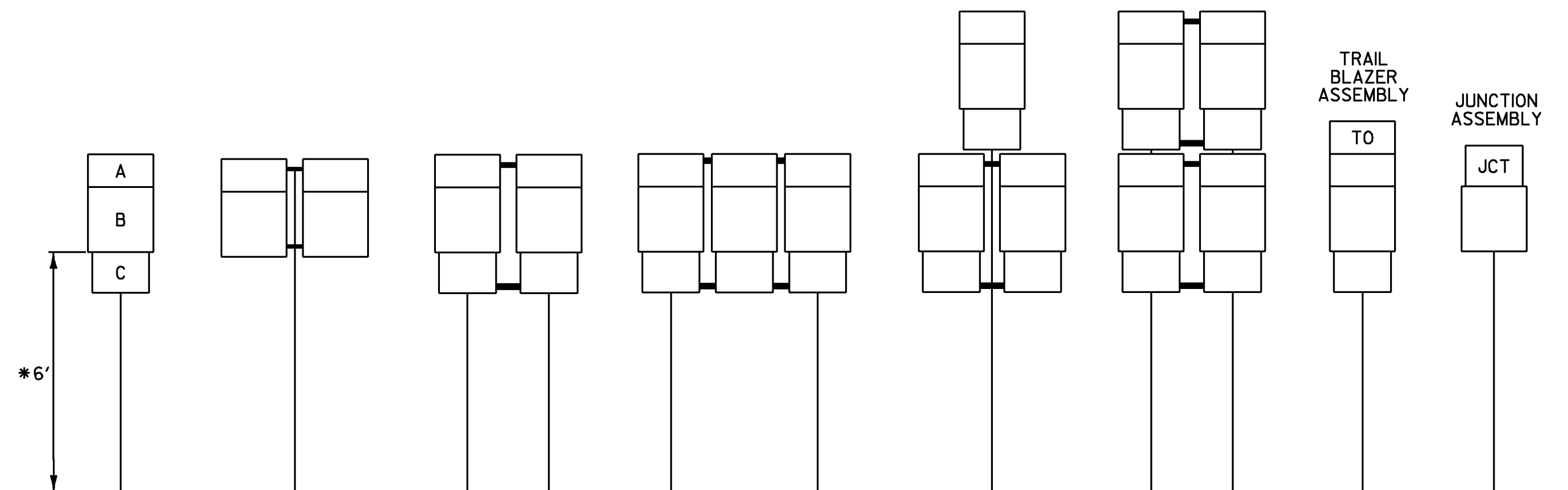
**ROUTE MARKER ASSEMBLY FRAMES**



**NOTES:**

1. NOTES FOR 1 AND 2 FRAME:
  - A. WITH ONE 30 INCH THREE DIGIT SIGN
  - B. WITH TWO 30 INCH THREE DIGIT SIGNS
2. NOTES FOR 3 FRAME:
  - A. WITH ONE 30 INCH THREE DIGIT SIGN IN AN OUTSIDE POSITION.
  - B. WITH ONE 30 INCH THREE DIGIT SIGN IN THE CENTER POSITION OR TWO SUCH SIGNS IN THE OUTSIDE POSITIONS.
  - C. WITH THREE 30 INCH THREE DIGIT SIGNS.
3. ALL HOLES SHALL BE 7/16 INCH DIAMETER. FOR OTHER SIGN COMBINATIONS THAN ABOVE, THE FRAME DIMENSIONS AND HOLE SPACING SHALL BE MODIFIED AS NECESSARY. THE FRAME SHALL BE PAINTED WITH ONE COAT OF PRIMER AND A SECOND COAT OF BLACK PAINT. THE PAINT SHALL BE OF THE TYPE USED ON EXTERIOR METAL SURFACES TO PREVENT METAL CORROSION.
4. STANDARD FRAMES SHALL BE 5/16 INCH x 1 1/2 INCH WELDED A-36 STEEL.
5. ALL DIMENSIONS SHOWN IN INCHES UNLESS OTHERWISE NOTED.

**STANDARD MOUNTING OF ROUTE MARKER ASSEMBLIES**



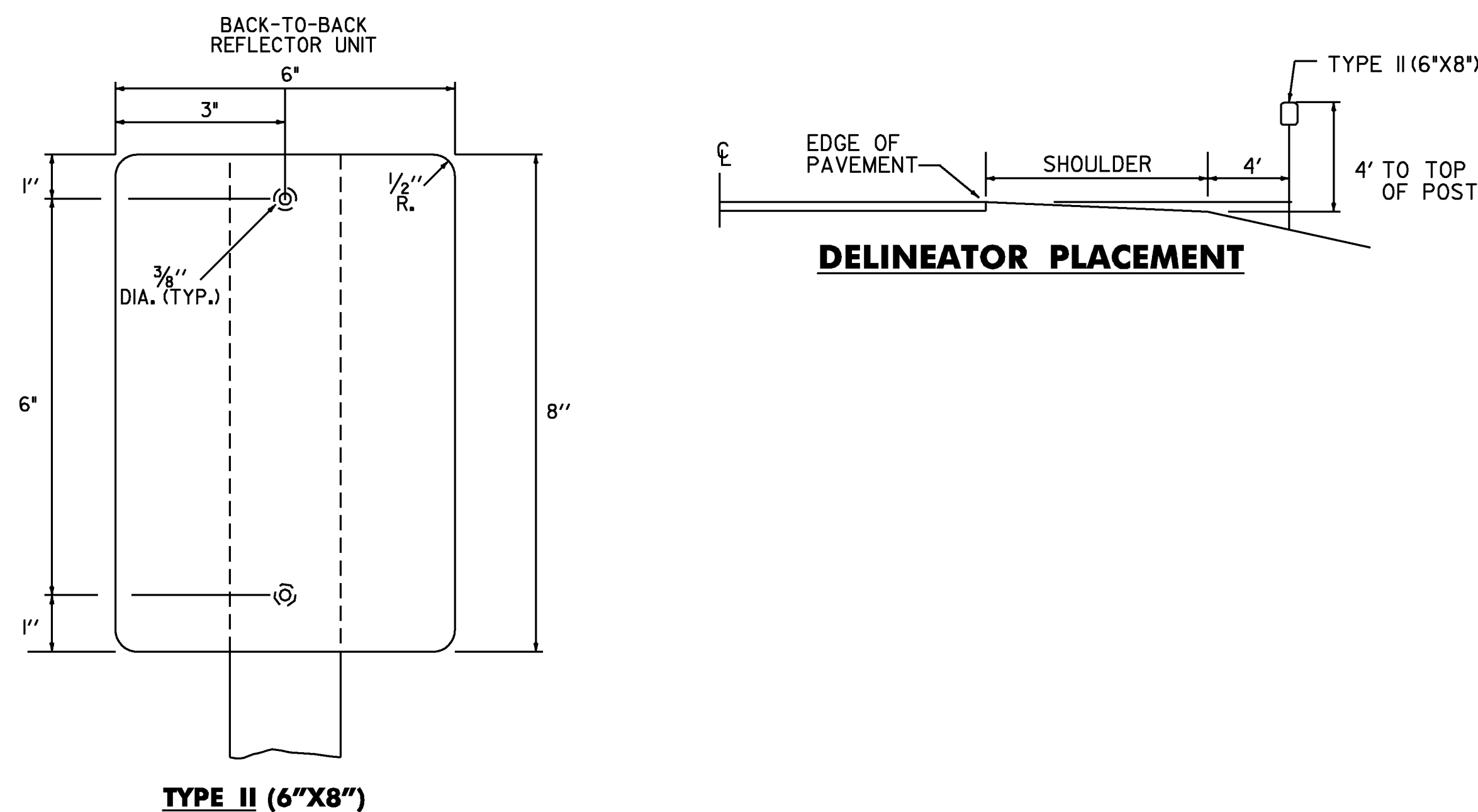
- A - CARDINAL DIRECTION MARKER  
 B - ROUTE NUMBER  
 C - ADVANCE TURN ARROW OR DIRECTIONAL ARROW
- \* WHERE PARKING OR PEDESTRIAN TRAFFIC WILL OCCUR IN THE IMMEDIATE VICINITY OF THESE SIGNS MINIMUM VERTICAL CLEARANCE SHALL BE INCREASED TO SEVEN FEET.

**INSTALLATION SEQUENCE:**

IN MULTIPLE HORIZONTAL MOUNTINGS PLACE A ROUTE MARKER ASSEMBLY INDICATING A LEFT TURN ON THE LEFT SIDE OF THE ASSEMBLY; RIGHT TURN ON THE RIGHT SIDE. FOR VERTICALLY STACKED MOUNTINGS PLACE THE STRAIGHT THROUGH MOVE INDICATION ON TOP, THE LEFT OR RIGHT TURNS AS APPROPRIATE BENEATH.

**NOTES:**

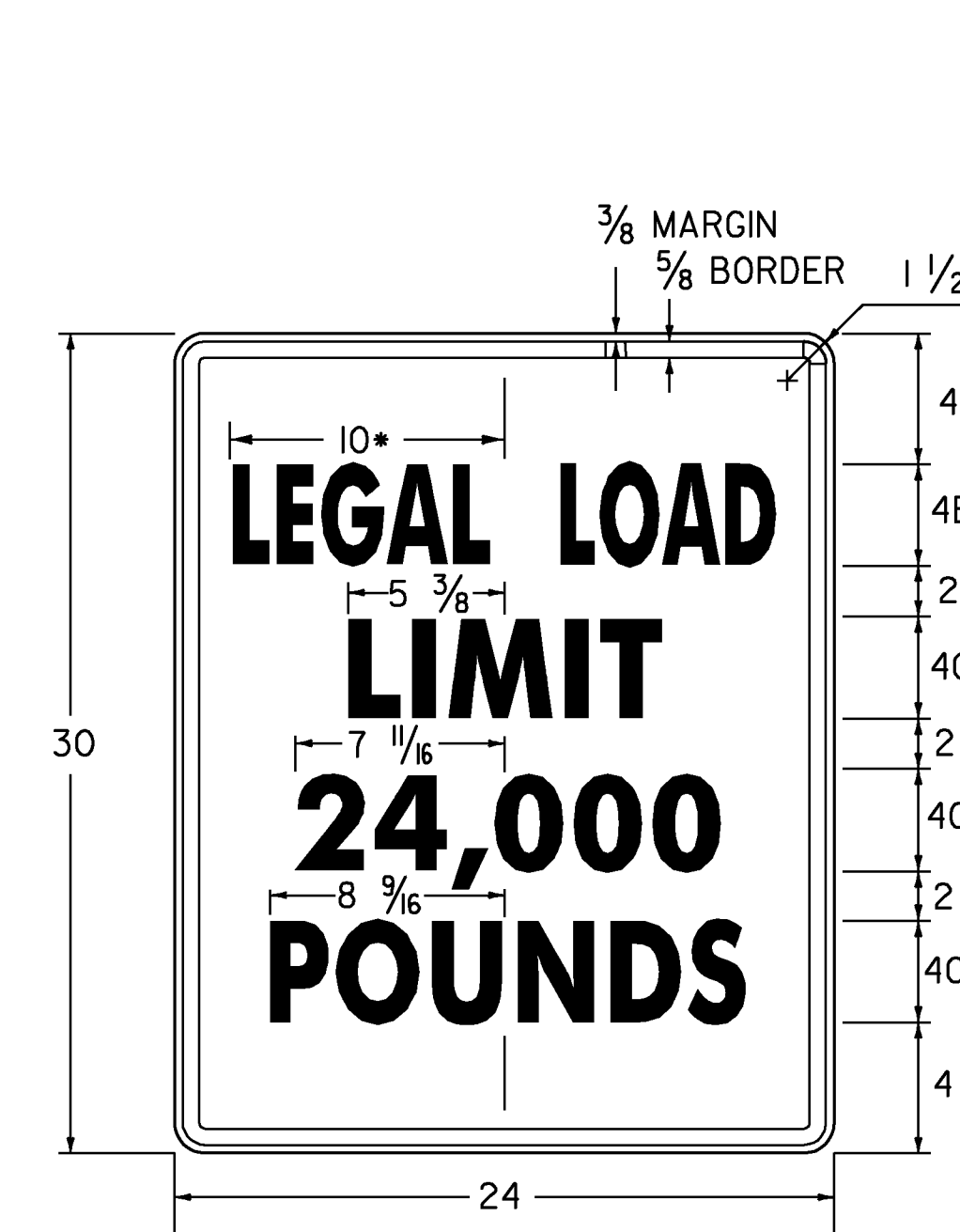
1. ALL DIMENSIONS SHOWN IN INCHES UNLESS OTHERWISE NOTED.
2. VERTICAL FRAME MEMBERS SHALL LINE UP WITH SIGN POST ON WHICH THEY ARE MOUNTED.



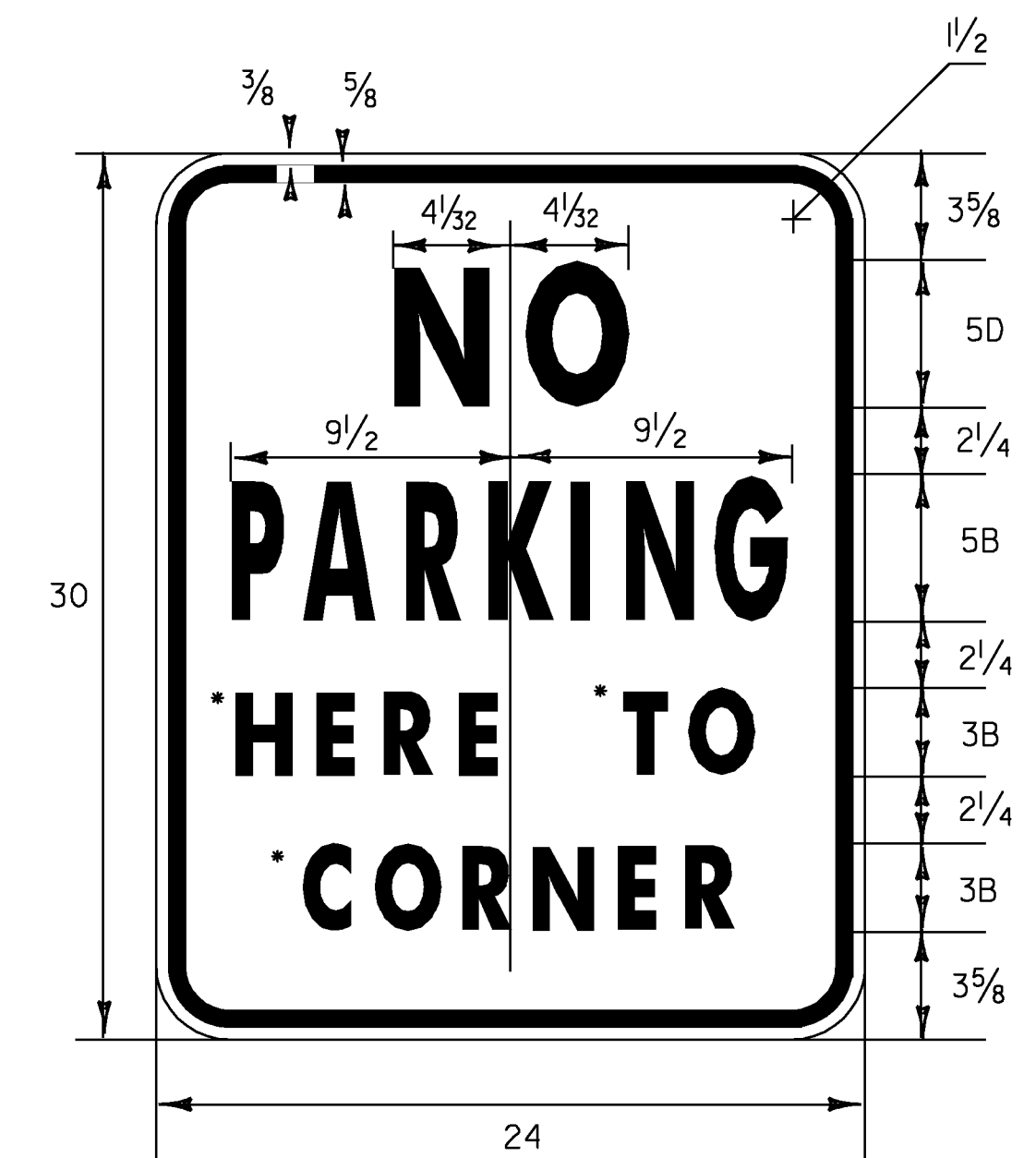
**DELINEATOR PLACEMENT**

**DELINEATORS WITH RETROREFLECTIVE SHEETING**

1. MATERIAL FOR RETROREFLECTIVE SHEETING FOR DELINEATORS SHALL BE A 0.063" ALUMINUM BACKING WITH A WHITE ASTM TYPE III OR TYPE IV.
2. ALL TYPE II (6"X8") DELINEATOR POSTS SHALL BE 1.88 LB/FT SQUARE STEEL WITH A 12 GAUGE ANCHOR, WITH AN ANCHOR REVEAL OF 2 INCHES.



\* REDUCE SPACING 50 %  
 LINE 3 ALTERNATE - 16,000  
**VR-017**  
 1.500" RADIUS, 0.625" BORDER, 0.375" INDENT  
 COLORS: LEGEND - BLACK  
 BACKGROUND - WHITE  
 TEXT STYLE: "LEGAL LOAD" B; "LIMIT" C;  
 "24,000" C; "POUNDS" C



**VR-345**  
 • OPTICALLY CENTER (HERE, TO, CORNER)  
 1.500" RADIUS, 0.625" BORDER, 0.375" INDENT  
 COLORS: LEGEND - RED  
 BACKGROUND - WHITE  
 TEXT STYLE: "NO" D; "PARKING" B; "HERE TO" B;  
 "CORNER" B

ALL DIMENSIONS SHOWN IN INCHES UNLESS OTHERWISE NOTED.

PROJECT NAME:	STATEWIDE SOUTHWEST REGION
PROJECT NUMBER:	STP HRRR(7)
FILE NAME:	I0K022.DGN
PROJECT LEADER:	N. AVERY
DESIGNED BY:	N. AVERY
GENERAL SIGN DETAILS:	2
PLOT DATE:	04-MAY-2010
DRAWN BY:	N. AVERY
CHECKED BY:	J. SCHULTZ
SHEET:	7 OF 78