

Figure 6H-3. Work on the Shoulders (TA-3)

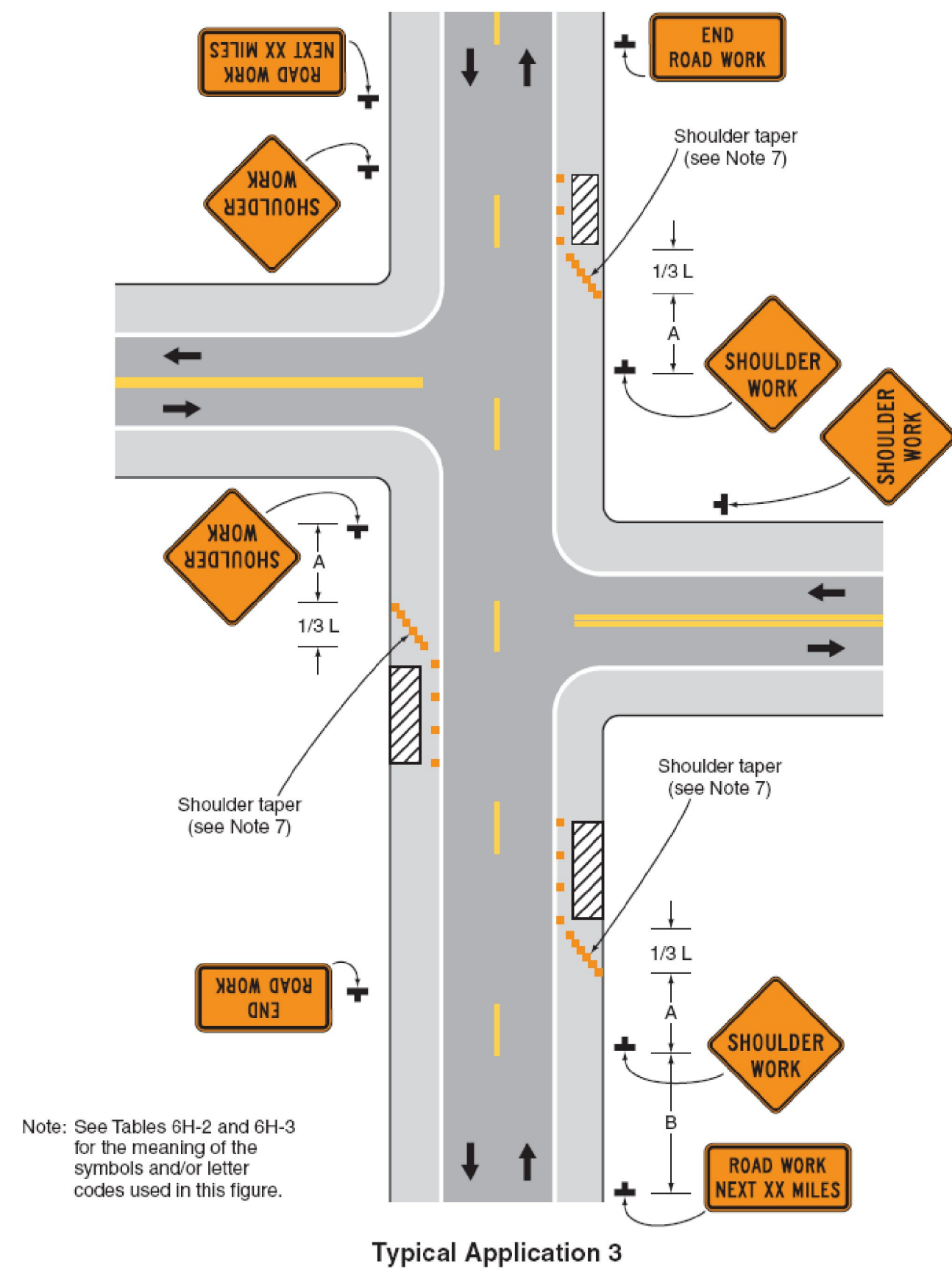


Figure 6H-4. Short-Duration or Mobile Operation on a Shoulder (TA-4)

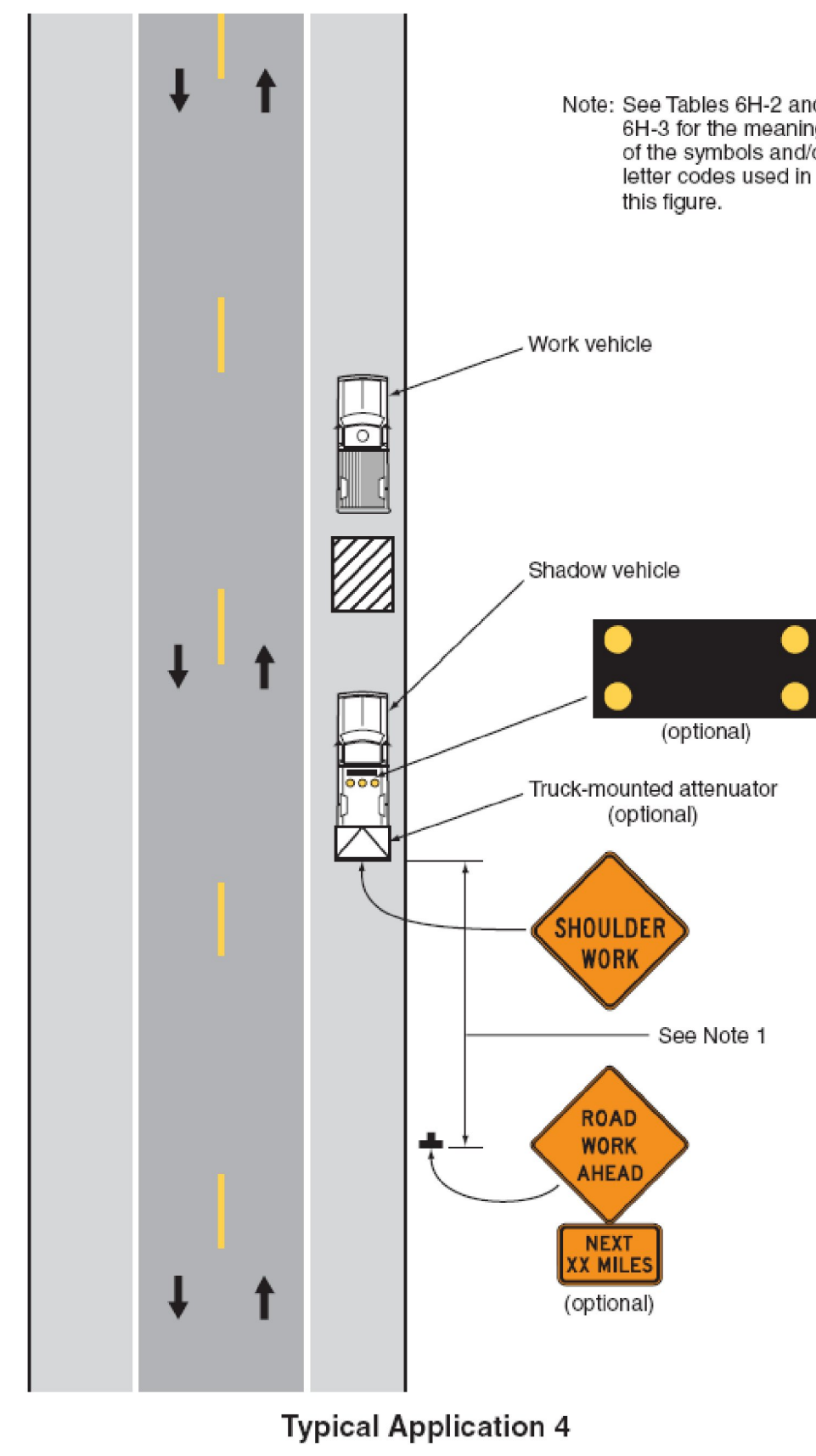


Figure 6H-6. Shoulder Work with Minor Encroachment (TA-6)

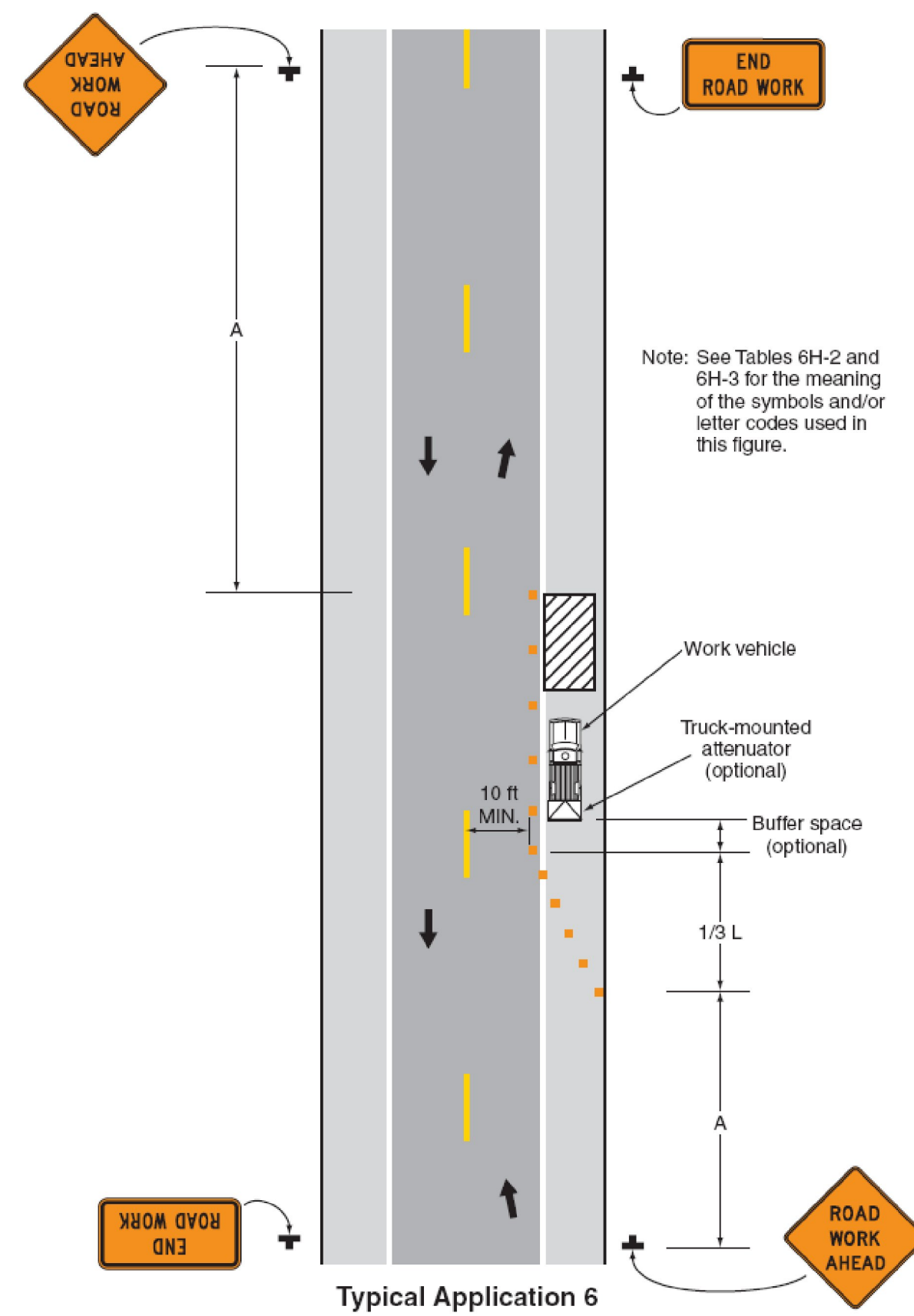


Figure 6H-10. Lane Closure on a Two-Lane Road Using Flaggers (TA-10)

