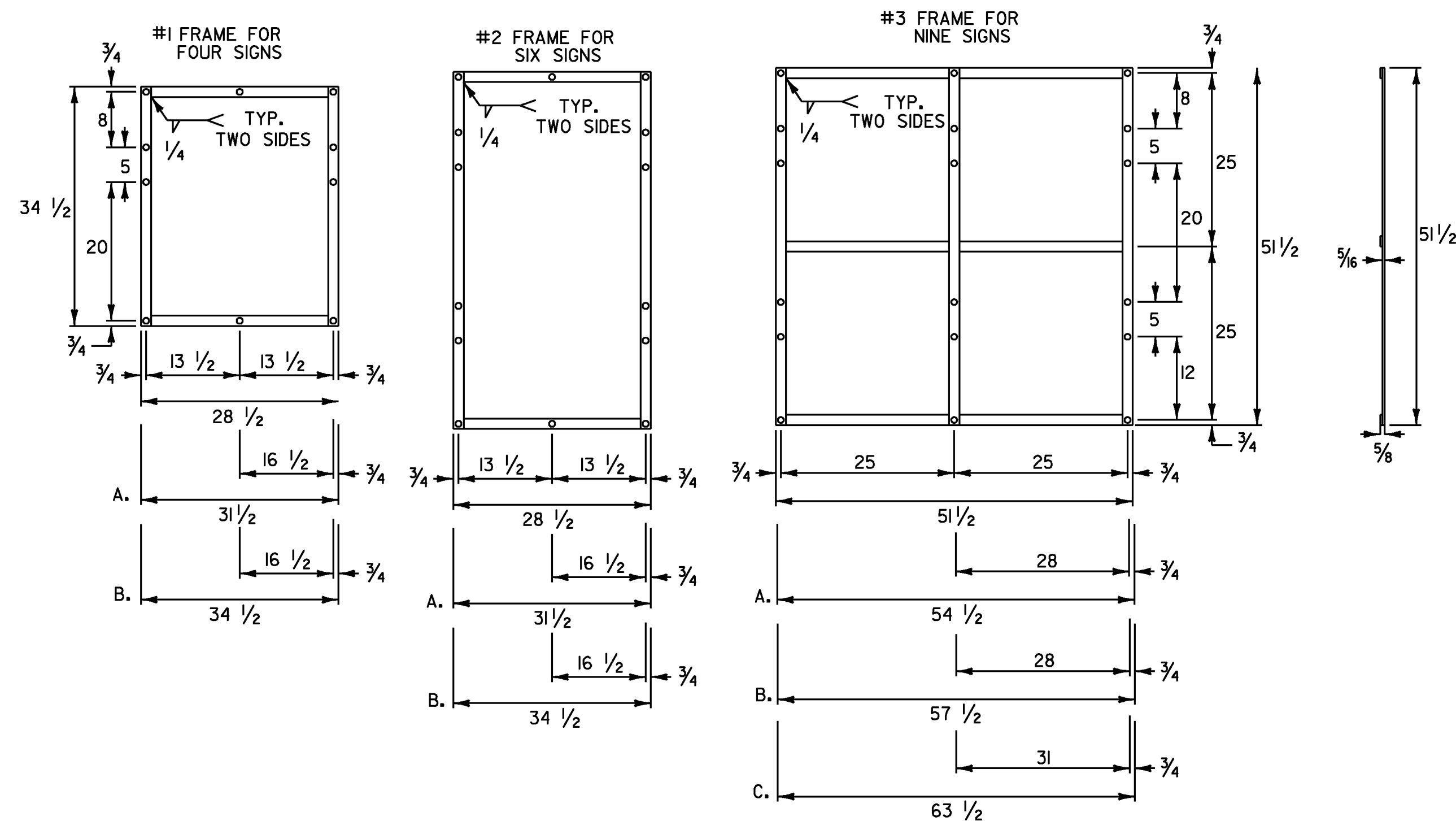


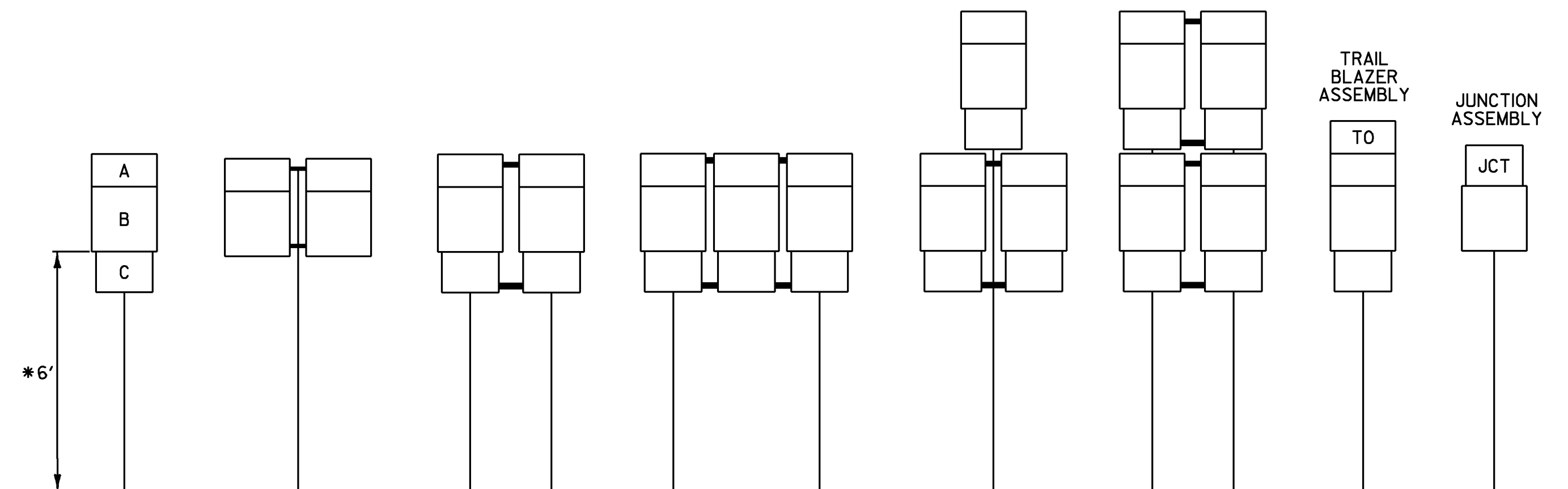
ROUTE MARKER ASSEMBLY FRAMES



NOTES:

1. NOTES FOR 1 AND 2 FRAME:
 - A. WITH ONE 30 INCH THREE DIGIT SIGN IN AN OUTSIDE POSITION.
 - B. WITH TWO 30 INCH THREE DIGIT SIGNS
2. NOTES FOR 3 FRAME:
 - A. WITH ONE 30 INCH THREE DIGIT SIGN IN THE CENTER POSITION.
 - B. WITH ONE 30 INCH THREE DIGIT SIGN IN THE CENTER POSITION OR TWO SUCH SIGNS IN THE OUTSIDE POSITIONS.
 - C. WITH THREE 30 INCH THREE DIGIT SIGNS.
3. ALL HOLES SHALL BE 1/16 INCH DIAMETER. FOR OTHER SIGN COMBINATIONS THAN ABOVE, THE FRAME DIMENSIONS AND HOLE SPACING SHALL BE MODIFIED AS NECESSARY. THE FRAME SHALL BE PAINTED WITH ONE COAT OF PRIMER AND A SECOND COAT OF BLACK PAINT. THE PAINT SHALL BE OF THE TYPE USED ON EXTERIOR METAL SURFACES TO PREVENT METAL CORROSION.
4. STANDARD FRAMES SHALL BE 5/16 INCH x 1 1/2 INCH WELDED A-36 STEEL.
5. ALL DIMENSIONS SHOWN IN INCHES UNLESS OTHERWISE NOTED.

STANDARD MOUNTING OF ROUTE MARKER ASSEMBLIES



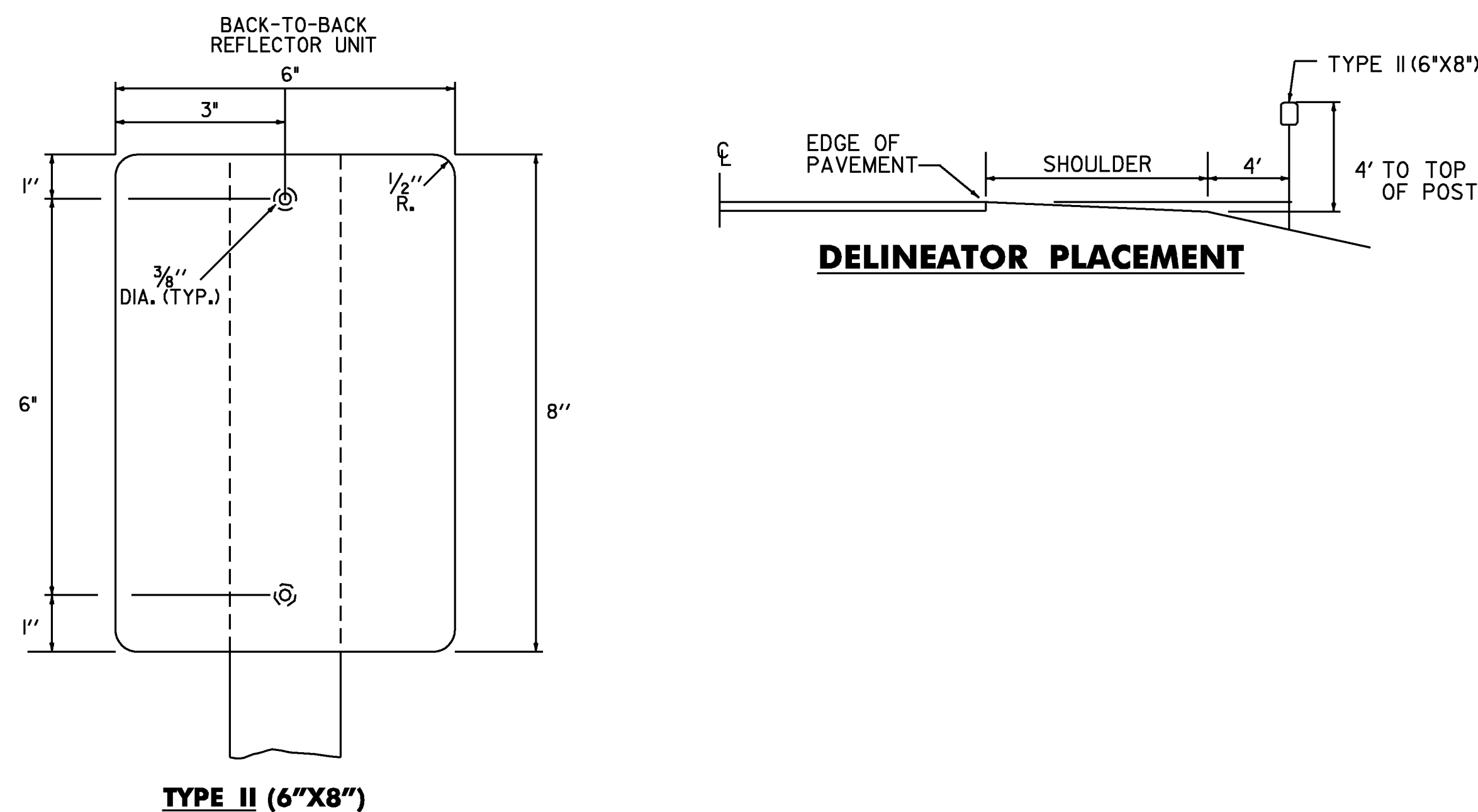
- A - CARDINAL DIRECTION MARKER
 B - ROUTE NUMBER
 C - ADVANCE TURN ARROW OR DIRECTIONAL ARROW
- * WHERE PARKING OR PEDESTRIAN TRAFFIC WILL OCCUR IN THE IMMEDIATE VICINITY OF THESE SIGNS MINIMUM VERTICAL CLEARANCE SHALL BE INCREASED TO SEVEN FEET.

INSTALLATION SEQUENCE:

IN MULTIPLE HORIZONTAL MOUNTINGS PLACE A ROUTE MARKER ASSEMBLY INDICATING A LEFT TURN ON THE LEFT SIDE OF THE ASSEMBLY; RIGHT TURN ON THE RIGHT SIDE. FOR VERTICALLY STACKED MOUNTINGS PLACE THE STRAIGHT THROUGH MOVE INDICATION ON TOP, THE LEFT OR RIGHT TURNS AS APPROPRIATE BENEATH.

NOTES:

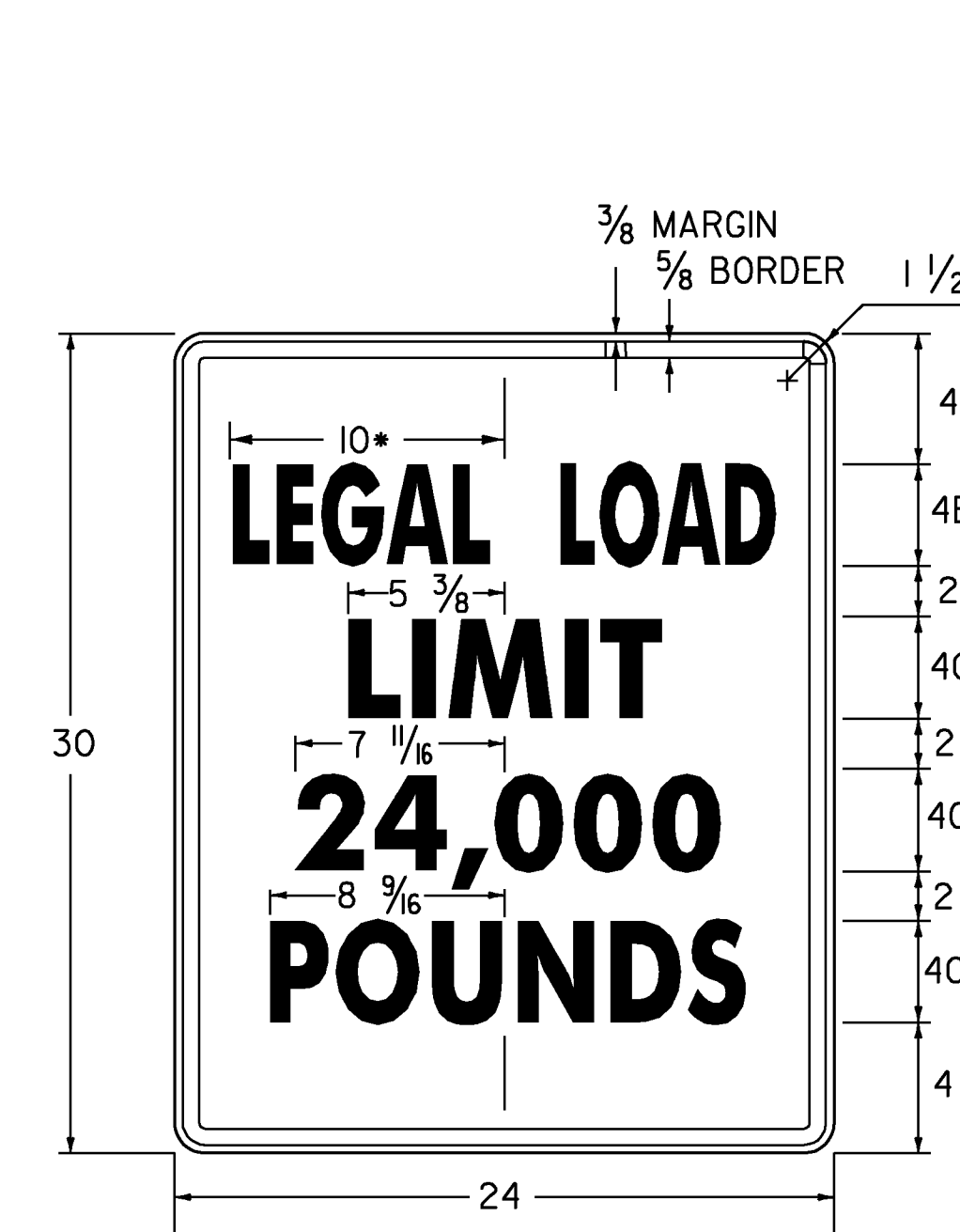
1. ALL DIMENSIONS SHOWN IN INCHES UNLESS OTHERWISE NOTED.
2. VERTICAL FRAME MEMBERS SHALL LINE UP WITH SIGN POST ON WHICH THEY ARE MOUNTED.



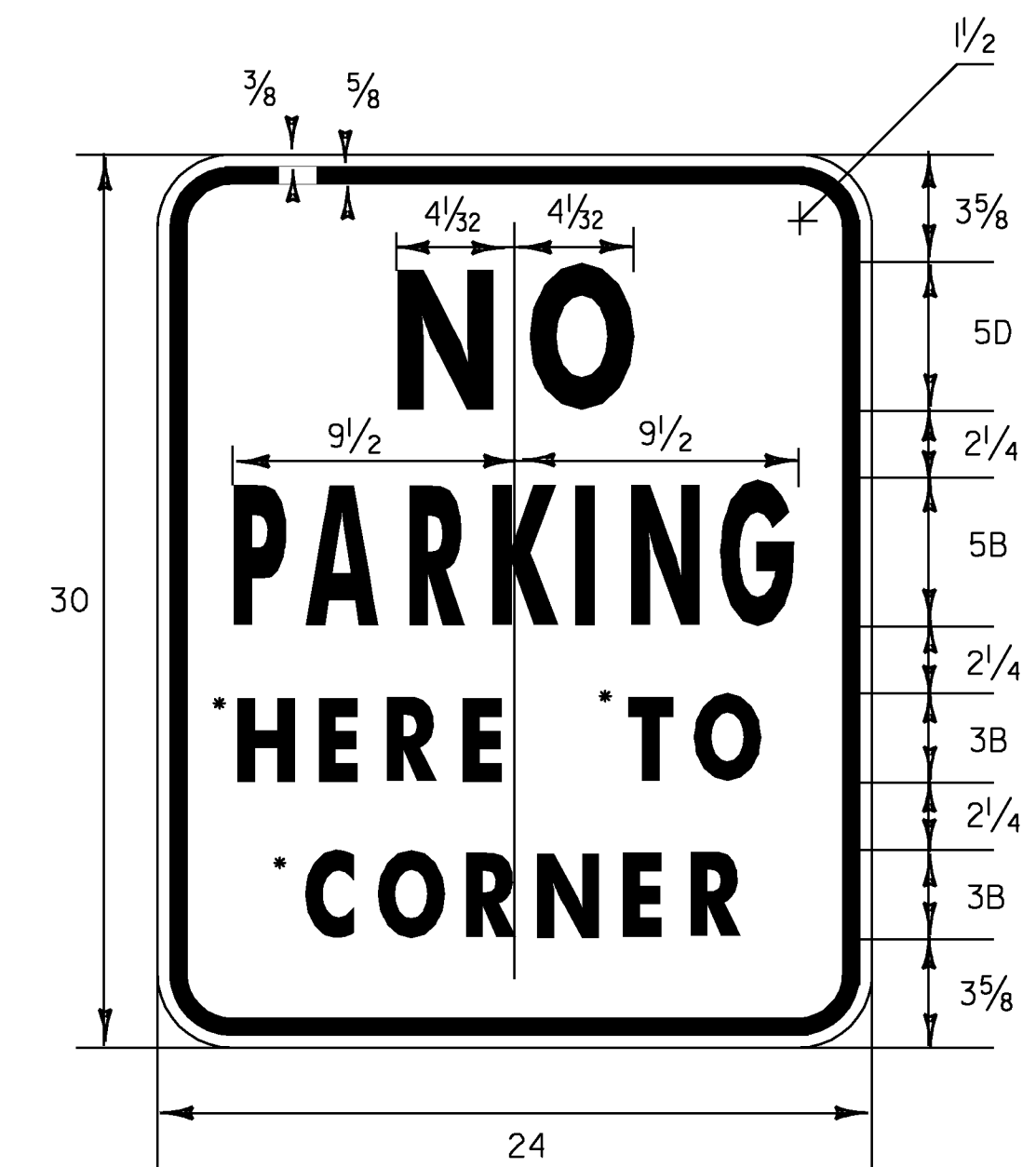
DELINEATOR PLACEMENT

DELINEATORS WITH RETROREFLECTIVE SHEETING

1. MATERIAL FOR RETROREFLECTIVE SHEETING FOR DELINEATORS SHALL BE A 0.063" ALUMINUM BACKING WITH A WHITE ASTM TYPE III OR TYPE IV.
2. ALL TYPE II (6"x8") DELINEATOR POSTS SHALL BE 1.88 LB/FT SQUARE STEEL WITH A 12 GAUGE ANCHOR, WITH AN ANCHOR REVEAL OF 2 INCHES.



* REDUCE SPACING 50 %
 LINE 3 ALTERNATE - 16,000
VR-017
 1.500" RADIUS, 0.625" BORDER, 0.375" INDENT
 COLORS: LEGEND - BLACK
 BACKGROUND - WHITE
 TEXT STYLE: "LEGAL LOAD" B; "LIMIT" C;
 "24,000" C; "POUNDS" C



VR-345
 • OPTICALLY CENTER (HERE, TO, CORNER)
 1.500" RADIUS, 0.625" BORDER, 0.375" INDENT
 COLORS: LEGEND - RED
 BACKGROUND - WHITE
 TEXT STYLE: "NO" D; "PARKING" B; "HERE TO" B;
 "CORNER" B

ALL DIMENSIONS SHOWN IN INCHES UNLESS OTHERWISE NOTED.

PROJECT NAME:	STATEWIDE SOUTHEAST REGION
PROJECT NUMBER:	STP HRRR(6)
FILE NAME:	I0k020_wrk.dgn
PROJECT LEADER:	JLS
DESIGNED BY:	NLA
GENERAL SIGN DETAILS:	2
PLOT DATE:	04-JUN-2010
DRAWN BY:	I. SHEA
CHECKED BY:	JLS
SHEET:	7 OF 44