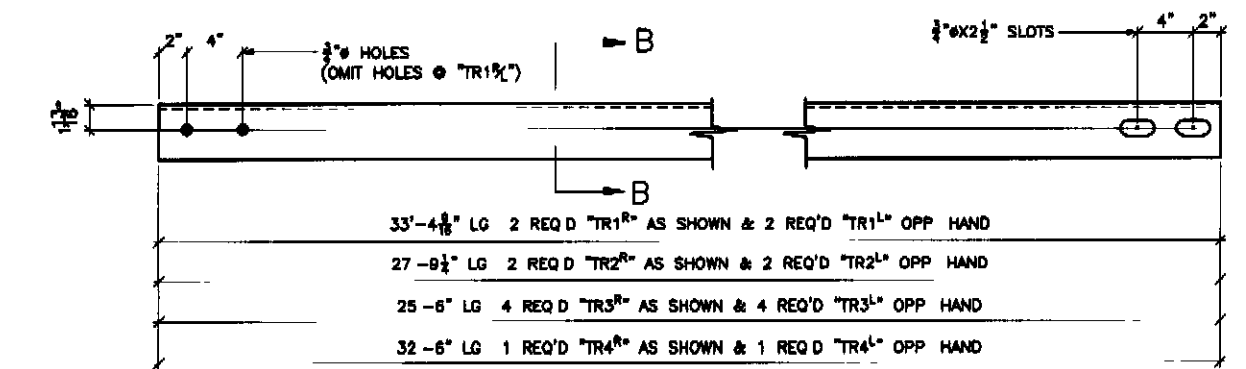
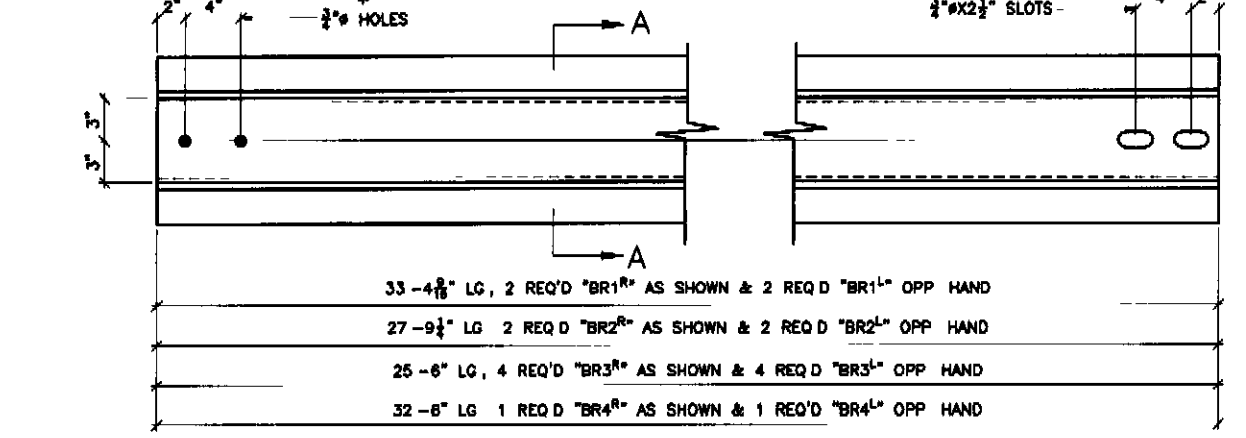


SECTION B-B



SECTION A-A



* OMIT HOLES FOR (1) "BR1" TO BE PLACED AT THE CORNER OF BRIDGE

BILL OF MATERIAL

QTY	SIZE	NO. OF HOLES	DESCRIPTION	LENGTH	REMARKS	UNIT
4	TR1 1/2"		TOP RAIL	33'-4 1/2"		2R @ 2L
4	TR2 1/2"		TOP RAIL	27'-0"		2R @ 2L
8	TR3 1/2"		TOP RAIL	25'-0"		4R @ 4L
2	TR4 1/2"		TOP RAIL	32'-0"		1R @ 1L
4	BR1 1/2"		BOTTOM RAIL	33'-4 1/2"		2R @ 2L
4	BR2 1/2"		BOTTOM RAIL	27'-0"		2R @ 2L
8	BR3 1/2"		BOTTOM RAIL	25'-0"		4R @ 4L
2	BR4 1/2"		BOTTOM RAIL	32'-0"		1R @ 1L

SECTION	REV	DATE	BY	CHKD	DESCRIPTION


ARC
 ADVANCED RESOURCES & CONST
 ENTERPRISES, INCORPORATED
 1000 W. 10TH STREET, SUITE 100
 FARGO, ND 58103-1000
 PHONE (701) 785-2000 • FAX (701) 785-1000

CONTRACT NO. _____
 DATE: 3/2/09
 DRAWING NO. BRIDGE RAILING DETAILS
 SHEET NO. 9 OF 10
 DATE: 3/2/09
 T. BUCK CONSTRUCTION, INC.