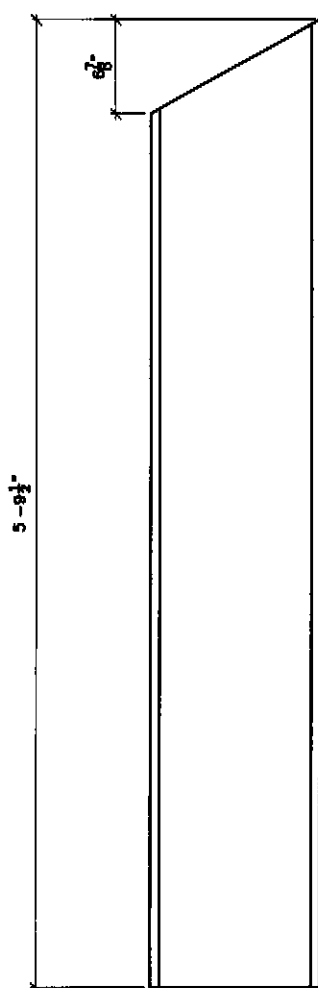
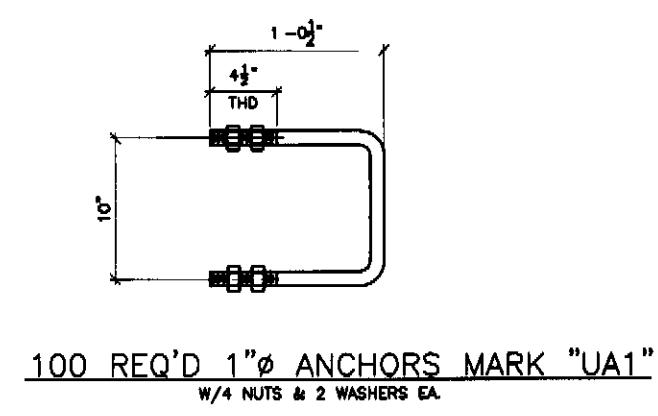


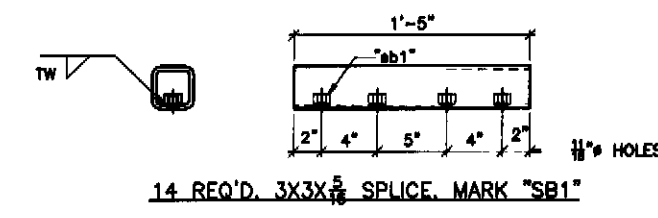
50 REQ'D W8X24 POSTS MARK "PT1"



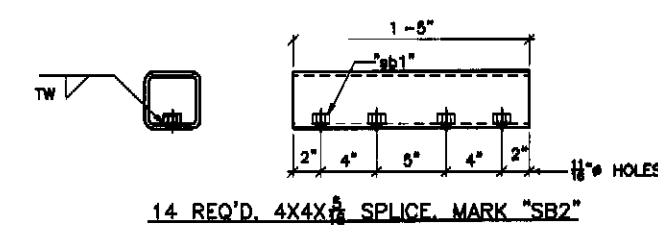
4 REQ'D W12X50 END POSTS MARK "EPT1"



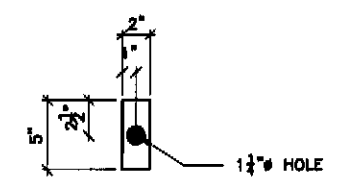
100 REQ'D 1" ANCHORS MARK "UA1"
W/4 NUTS & 2 WASHERS EA.



14 REQ'D 3/4" X 3/4" SPLICE MARK "SB1"



14 REQ'D 4" X 4" X 1/2" SPLICE MARK "SB2"



200 REQ'D 1/4" THK WASHER MARK "W2"

BILL OF MATERIAL						
QTY	ITEM NO.	DESCRIPTION	LENGTH	REMARKS	MATL.	
50	PT1	W8X24	4'-3"			
50	UA1	1" DIA ANCHOR	1'-0"			
4	EPT1	W12X50	5'-0"			
200	W2	1/4" THK WASHER	0'-5"			
100	UA1	1" DIA ANCHOR	1'-0"			
14	SB1	3/4" X 3/4" SPLICE	1'-5"			
14	SB2	4" X 4" X 1/2" SPLICE	1'-5"			
154	FB2	1/2" BOLT	0'-3"			
4	FB3	1/2" BOLT	0'-2"			
8	FB4	1/2" BOLT	0'-2"			
112	FB2	1/2" BOLT	0'-3"			

DATE	BY	DESCRIPTION	DATE	BY	DESCRIPTION

ARC
 ADVANCED RESOURCES & CONST
 ENTERPRISES, INCORPORATED
 P.O. BOX 100 HARRISBURG, PA 17101
 PHONE: (717) 233-2600 - FAX: (717) 233-1000

PROJECT: BRIDGE RAILING DETAILS
 DATE: 3/2/99
 DRAWN BY: T. BUCK
 CHECKED BY: T. BUCK
 DATE: 3/2/99

SHEET NO. 8
 OF 8