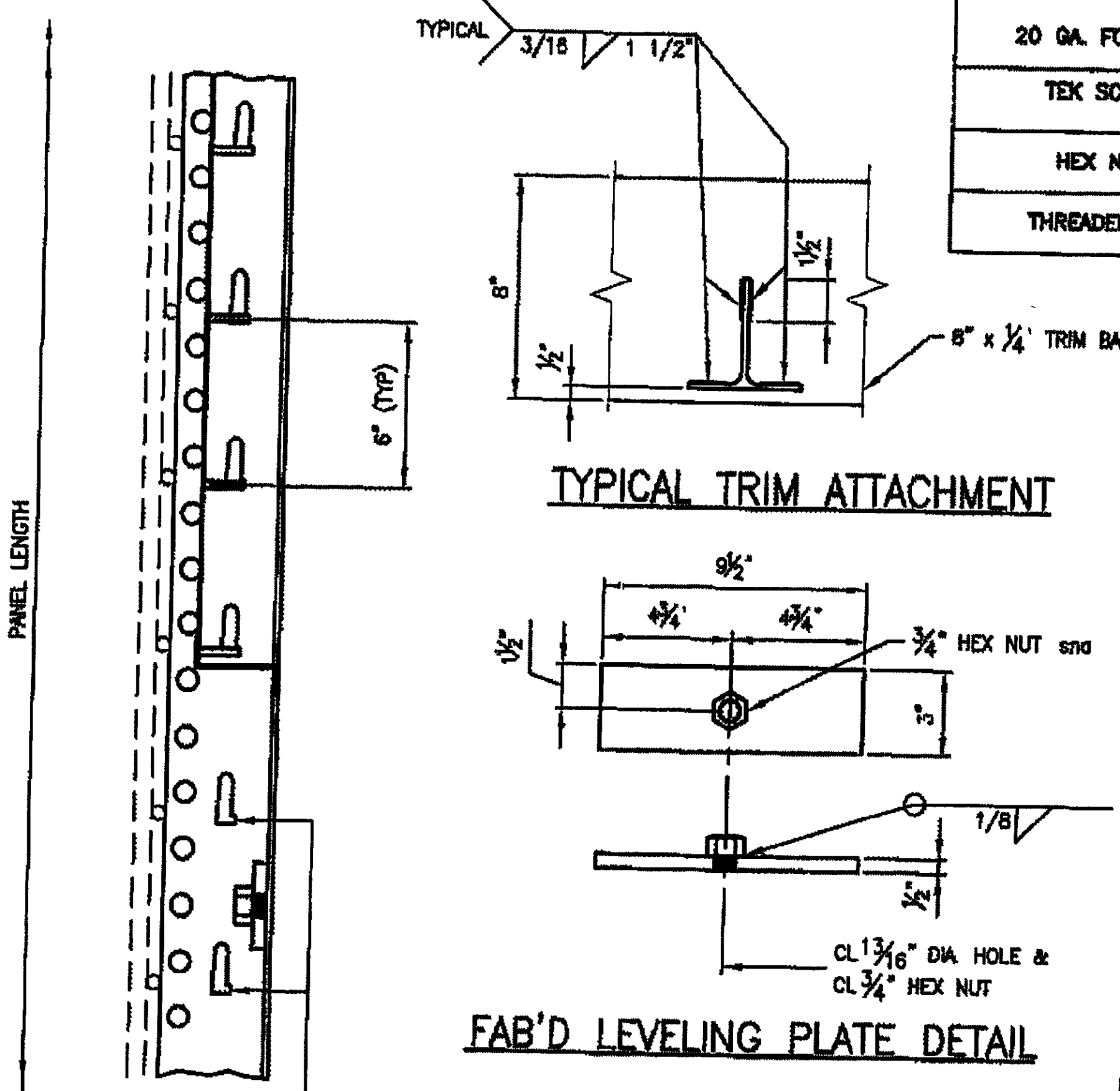
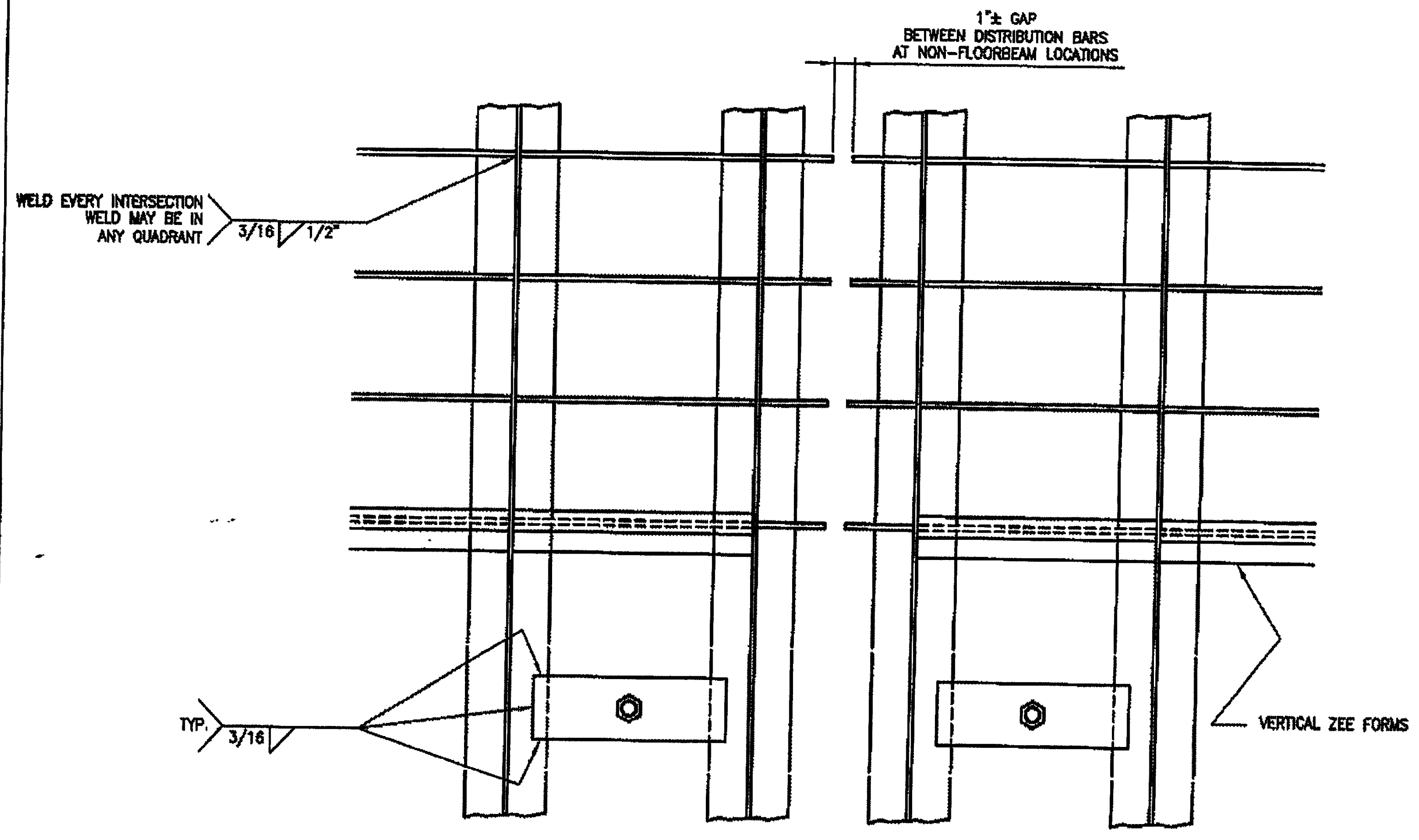


STANDARD PANEL TOLERANCES	
PANEL WIDTH	+0 -1/8
PANEL LENGTH	±1/4
SQUARENESS	±1/2
TRANSVERSE CAMBER (WIDTH)	.005 x WIDTH
LONGITUDINAL CAMBER (LENGTH)	.003 x LENGTH
SIDE BOW (SWEEP)	±1/4 PER 10'-0"
MAIN BAR VERTICALITY	±1/8
CROSS BAR VERTICALITY	±1/16

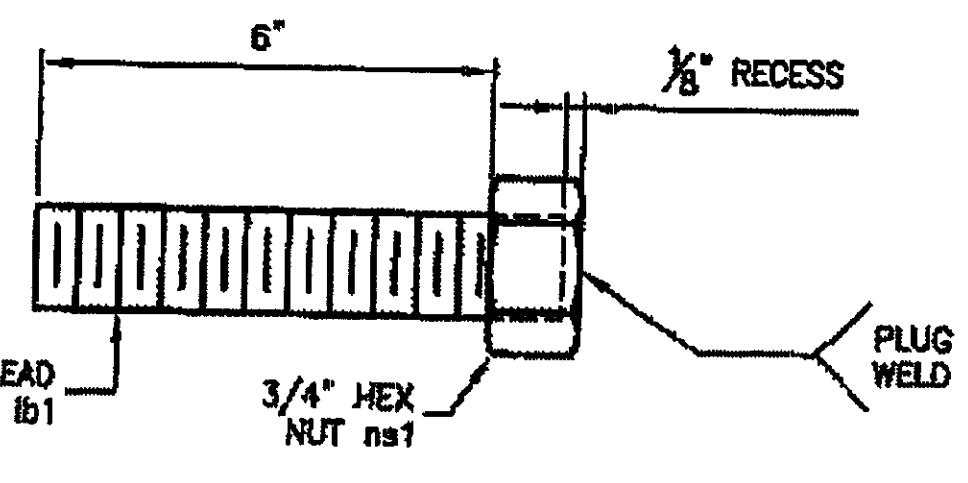
MATERIAL SPECIFICATIONS			
DESCRIPTION	ASTM	ALLOY / GR.	REMARKS
WT 4 X 5 AND DISTRIBUTION BARS CROSS BARS	A 572	50	GALV'D W/ PANEL
LEVELING PLATES	A 572	50	GALV'D W/ PANEL
20 GA. FORM PAN	A 368		BLACK SHEET W/ PANEL (SHOP WELDED VERTICAL PANS)
20 GA. FORM PAN	A 653	GR 90 OR BETTER	GALV'D (FIELD INSTALLED PANS)
TEK SCREWS			SMD 8-18 X 1/2 HWH #4 ZINC PLATED
HEX NUTS	A 563	GR. DH	BLACK-TAPPED OVERSIZE SHOP WELD TO LEV. PLS & LEVELING BOLTS SHEET W/ PANEL
THREADED ROD	F 1554		GALV'D LEVELING BOLTS



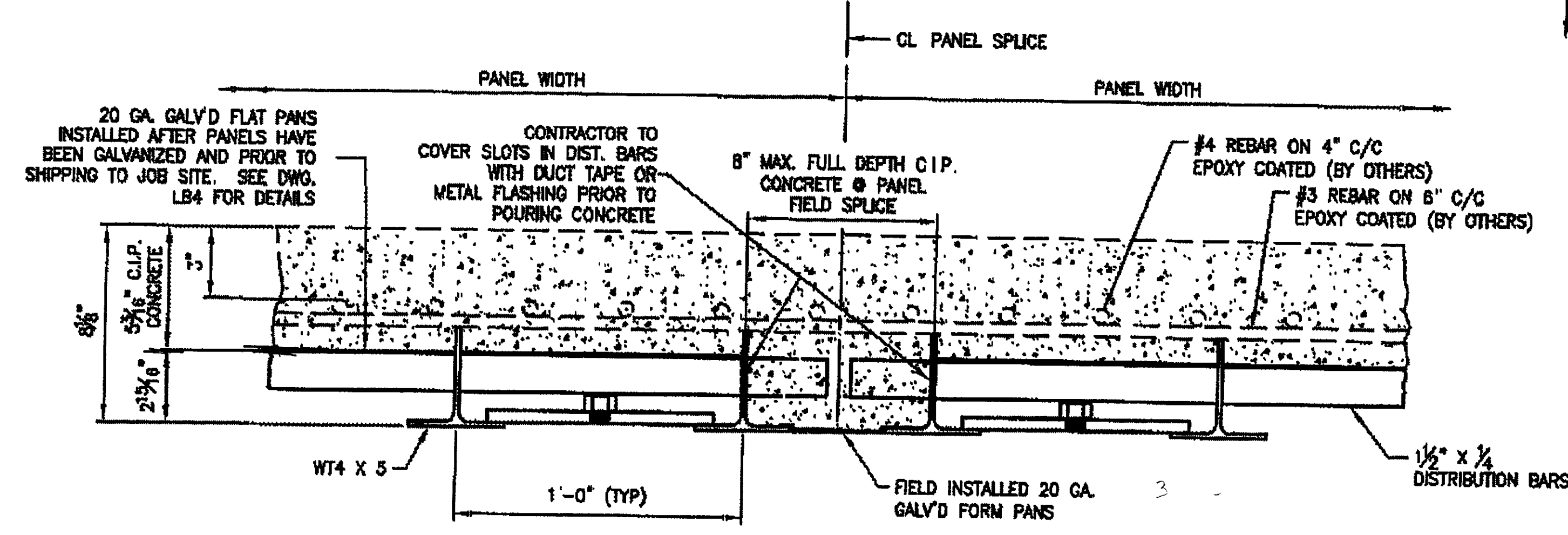
GENERAL NOTES:
 MATERIAL AND WORKMANSHIP SHALL BE IN ACCORDANCE WITH STATE OF VERMONT AGENCY OF TRANSPORTATION 2006 STANDARD SPECIFICATIONS FOR CONSTRUCTION AND ITS LATEST REVISIONS, THE AASHTO STANDARD SPECIFICATIONS FOR HIGHWAY BRIDGES, DATED 2002 AND THE SPECIAL PROVISIONS.
 SHOP WELDING SHALL BE PERFORMED BY THE GAS METAL ARC PROCESS (MIG) USING ER70S-3 FILLER METAL PER AWS D1.5 OF THE BRIDGE WELDING CODE.
 AFTER FABRICATION, GRID PANELS SHALL BE HOT DIPPED GALVANIZED PER ASTM A123. DUE TO THE GALVANIZING PROCESS, PANELS MAY HAVE SOME DISTORTION AND SIDE SWEEP WHICH WILL REQUIRE ADJUSTMENT BY THE CONTRACTOR PRIOR TO INSTALLATION.

CHASE THREADS ON LEVELING NUTS AFTER GALVANIZING.

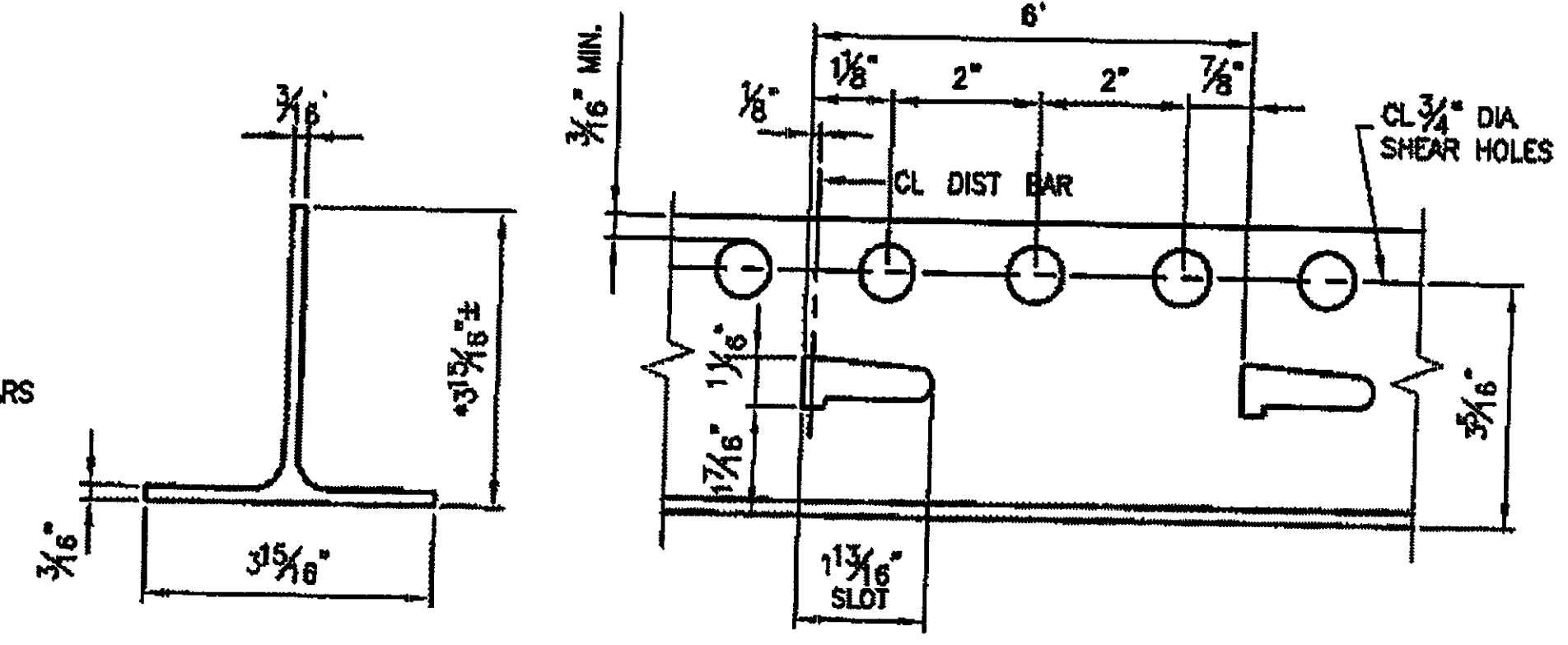
PAY ITEM:
 PAY AREA:



FAB'D LEVELING BOLT DETAIL ~ LB1

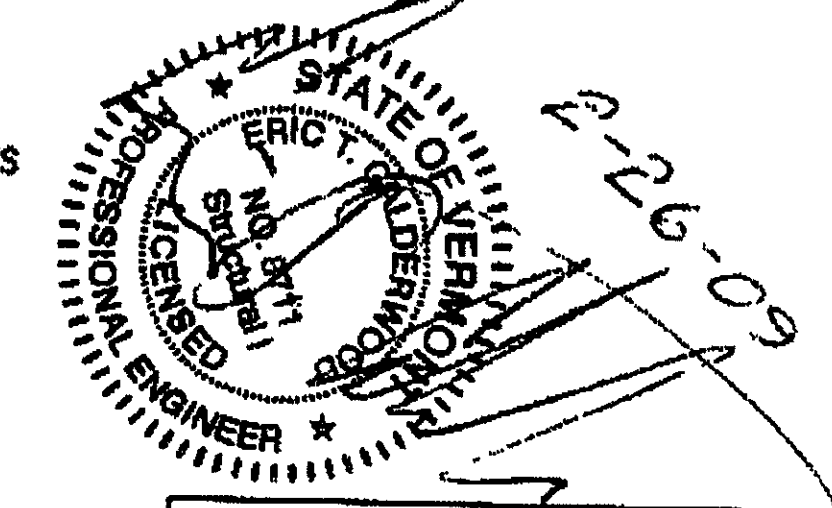


TYPICAL FLOORING DETAILS
 FORM PANS NOT SHOWN IN PLAN



WT 4 X 5 DETAIL

*DUE TO MILL TOLERANCES, THE WT 4 X 5 MAY VARY IN HEIGHT



APPROVED: _____
L. B. FOSTER CO.
 GENERAL OFFICE
 PITTSBURGH, PENNSYLVANIA 15220
 FOR: STATE OF VERMONT
 STATE OF VERMONT AGENCY OF TRANSPORTATION
 TOWN OF RICHMOND HIGHWAY T.H.#1 BRIDGE #31
 TOWN HIGHWAY #1 OVER WINDOSKI RIVER BHF 0209(5)
 GENERAL NOTES AND TYPICAL DETAILS

DATE	01/28/09	BY	SD0265
CHECK	02/04/09	BY	LB1

DATE	5/3/07
REVISION	7/4
REVISION	
REVISION	
REVISION	
REVISION	