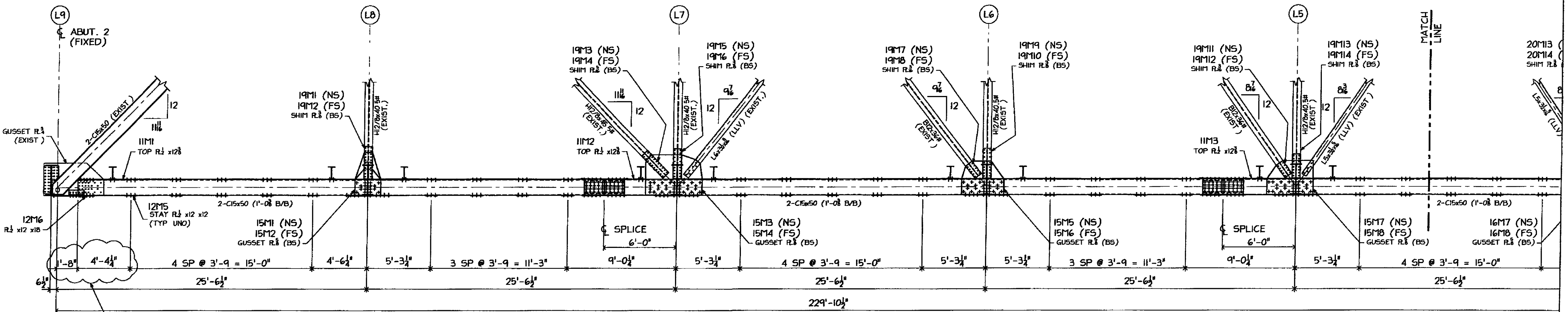
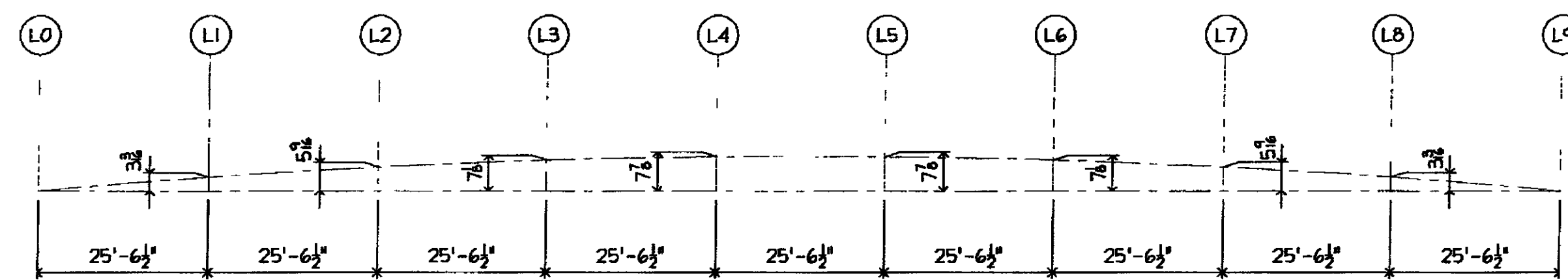


EAST CHORD ELEVATION
(LOOKING WEST)



WEST CHORD ELEVATION
(LOOKING EAST)

FIELD VERIFY THE THICKNESS
OF ALL SHIMS



CAMBER DIAGRAM BOTTOM CHORD
(BEFORE APPLICATION OF DEAD LOAD)

REVISIONS	
NO EXCEPTION TAKEN	
REVISION NOTED	
REVISION NOT REQUIRED	
REVISION NOTED	
REVISION NOT REQUIRED	
REJECTED	
DATE	3/24/19
SIGNATURE	TEK
REVIEW BY STANTEC IS FOR THE SOLE PURPOSE OF ASCERTAINING GENERAL CONFORMITY WITH DIMENSIONS, FABRICATION AND CONSTRUCTION METHODS. COORDINATION OF SUBSTITUTES, DETAIL DESIGN OF COMPONENTS AND ERRORS OR OMISSIONS ON SHOP DRAWINGS.	

- NOTES RE. NEW STEEL
- ALL ROLLED SECTIONS SHALL CONFORM TO AASHTO M 270M/1M 270 GRADE 50 & SHALL BE CHAIRPY "V" NOTCH TESTED
 - ALL OTHER MATERIAL SHALL CONFORM TO AASHTO M 270M/1M 270 GRADE 36 (UNLESS NOTED)
 - BOTTOM CHORD OF TRUSS SHALL BE "FRACTURE CRITICAL MEMBERS"
 - ALL MATERIAL SHALL BE HOT-DIPPED GALVANIZED PER ASTM A-123
 - WIRE-BRUSH ALL CONTACT SURFACES TO A DULL-GRAY APPEARANCE PRIOR TO ASSEMBLY
 - ALL BOLTS SHALL BE 3/4" A325 (GALV) UNLESS NOTED (BOLT HEADS ON TOP OR EXPOSED SIDE IF POSSIBLE)

- NOTES RE. DRAWINGS
- WORK THIS DRAWING WITH DWG #E4
 - REFER TO DWG #E1 & E2 FOR FRAMING PLAN
 - REFER TO DWG #E5 & E6 FOR SECTIONS & DETAILS

3/11/09 PER APP'L COMMENTS DATED 3/06/09

ARC ENTERPRISES, INC.
KINGFIELD, MAINE

PROJECT: STATE OF VERMONT - AGENCY OF TRANSPORTATION
BRIDGE No 31 - RICHMOND, VERMONT

SCALE: NTS	APPROVED BY: KAJ
DATE: 2/18/09	CHKD BY: CMOS - DBZ
BRIDGE @ HIGHWAY #1 OVER WINOOSKI RIVER BOTTOM CHORD ELEVATIONS	
T BUCK CONSTRUCTION	DWC NO. 09-113 - E3