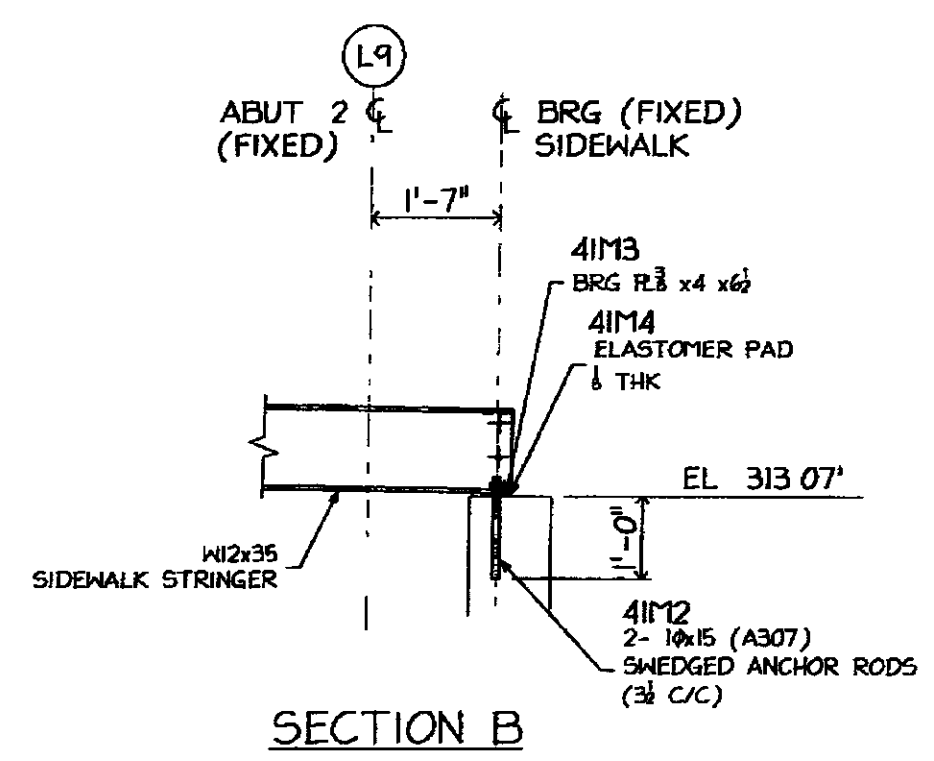


FRAMING PLAN @ NEW DECK STEEL



NO EXCEPTIONS ARE PERMITTED UNLESS NOTED OTHERWISE	
NO EXCEPTION TAKEN	
REVISIONS NOTED	
RESUBMISSION NOT REQUIRED	
REVISIONS NOTED	
RESUBMISSION REQUIRED	
REJECTED	
DATE	3/24/19
SIGNATURE	TEK
REVIEW BY STANTIG IS FOR THE SOLE PURPOSE OF ASCERTAINING GENERAL CONFORMITY WITH DESIGN. CONTRACTOR IS RESPONSIBLE FOR DIMENSIONS, FABRICATION AND CONSTRUCTION METHODS, COORDINATION OF SUBTRADES, DETAIL DESIGN OF COMPONENTS, AND ERRORS OR OMISSIONS ON SHOP DRAWINGS.	

- NOTES RE. NEW STEEL
- ALL ROLLED SECTIONS SHALL CONFORM TO AASHTO M 270/M 270 GRADE 50 & SHALL BE CHARPY "V" NOTCH TESTED
 - ALL OTHER MATERIAL SHALL CONFORM TO AASHTO M 270/M 270 GRADE 36 (UNLESS NOTED)
 - BOTTOM CHORD OF TRUSS SHALL BE "FRACTURE CRITICAL MEMBERS"
 - ALL MATERIAL SHALL BE HOT-DIPPED GALVANIZED PER ASTM A-123
 - WIRE-BRUSH ALL CONTACT SURFACES TO A DULL-GRAY APPEARANCE PRIOR TO ASSEMBLY
 - ALL BOLTS SHALL BE 3/4" A325 (GALV.) UNLESS NOTED (BOLT HEADS ON TOP OR EXPOSED SIDE IF POSSIBLE)

- NOTES RE. DRAWINGS:
- WORK THIS DRAWING WITH DWG #E1
 - REFER TO DWG #E3 & E4 FOR CHORD ELEVATIONS
 - REFER TO DWG #E5 & E6 FOR SECTIONS & DETAILS

3/11/09 PER APPL COMMENTS DATED 3/06/09

ARC ENTERPRISES, INC.
KINGFIELD, MAINE

PROJECT STATE OF VERMONT - AGENCY OF TRANSPORTATION
BRIDGE No 31 - RICHMOND, VERMONT

SCALE	NTS	APPROVED BY:	DRAWN BY: KAJ
DATE:	2/18/09	CHKD. BY: CMS - DB2	

BRIDGE @ HIGHWAY #1 OVER WINOOSKI RIVER
STEEL FRAMING PLAN

T BUCK CONSTRUCTION

DWG NO. 09-113 - E2