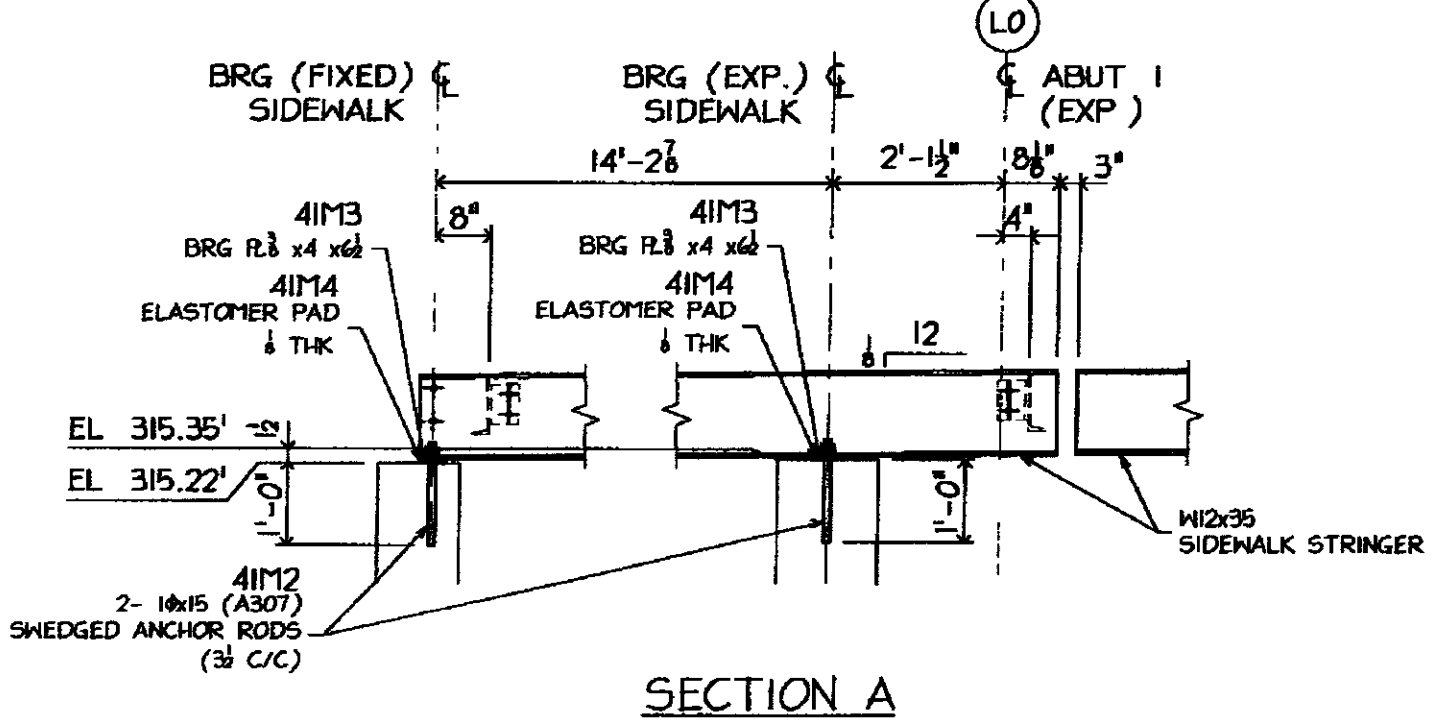
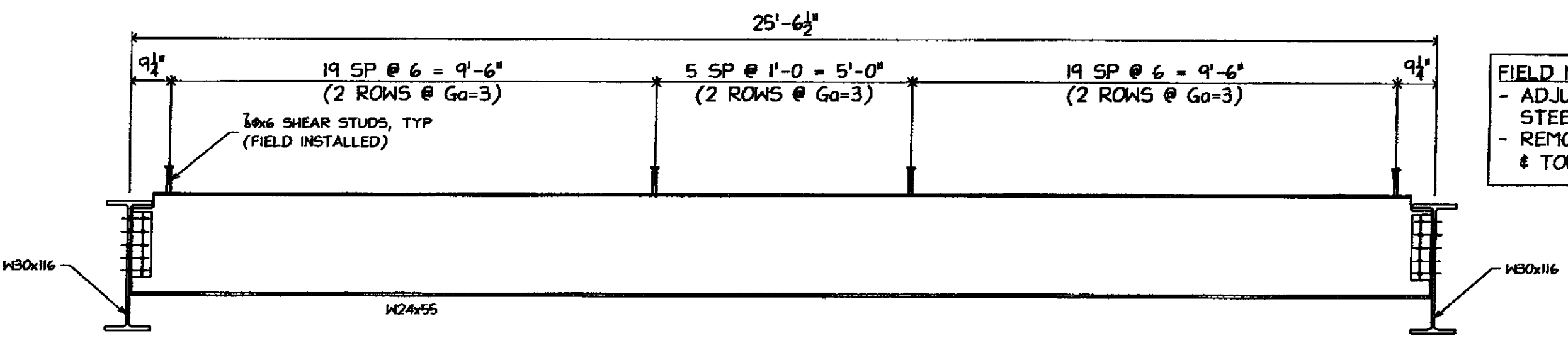


FRAMING PLAN @ NEW DECK STEEL



SECTION A



STUD LAYOUT ON DECK STRINGER

FIELD NOTES.
 - ADJUST STUD SPACINGS TO AVOID STEEL GRID FLOORING.
 - REMOVE GALV IN VICINITY OF STUD & TOUCH UP PER ENGINEER'S SPEC

- NOTES RE. NEW STEEL.**
- ALL ROLLED SECTIONS SHALL CONFORM TO AASHTO M 270/M 1 270 GRADE 50 & SHALL BE CHARPY 1/4" NOTCH TESTED
 - ALL OTHER MATERIAL SHALL CONFORM TO AASHTO M 270/M 1 270 GRADE 36 (UNLESS NOTED)
 - BOTTOM CHORD OF TRUSS SHALL BE "FRACTURE CRITICAL MEMBERS"
 - ALL MATERIAL SHALL BE HOT-DIPPED GALVANIZED PER ASTM A-123
 - WIRE-BRUSH ALL CONTACT SURFACES TO A DULL-GRAY APPEARANCE PRIOR TO ASSEMBLY
 - ALL BOLTS SHALL BE 3/8" A325 (GALV) UNLESS NOTED (BOLT HEADS ON TOP OR EXPOSED SIDE IF POSSIBLE)

- NOTES RE. DRAWINGS:**
- WORK THIS DRAWING WITH DWG #E2
 - REFER TO DWG #E3 & E4 FOR CHORD ELEVATIONS.
 - REFER TO DWG #E5 & E6 FOR SECTIONS & DETAILS

SHOP DRAWINGS ARE REVIEWED UNLESS NOTED OTHERWISE	
NO EXCEPTION TAKEN	<input checked="" type="checkbox"/>
REVISE AS NOTED	<input type="checkbox"/>
RESUBMISSION NOT REQUIRED	<input type="checkbox"/>
REVISE AS NOTED	<input type="checkbox"/>
RESUBMISSION REQUIRED	<input type="checkbox"/>
REJECTED	<input type="checkbox"/>
DATE	3/21/19
SIGNATURE	TJK
REVIEW BY STANTEC IS FOR THE SOLE PURPOSE OF ASCERTAINING GENERAL CONFORMITY WITH DESIGN. CONTRACTOR IS RESPONSIBLE FOR DIMENSIONS, FABRICATION AND CONSTRUCTION METHODS, COORDINATION OF SUB-TRADES, DETAIL DESIGN OF COMPONENTS AND ERROR, OR OMISSIONS ON SHOP DRAWINGS.	

3/11/09 PER APPL COMMENTS DATED 3/06/09

ARC ENTERPRISES, INC
KINGFIELD, MAINE

PROJECT STATE OF VERMONT - AGENCY OF TRANSPORTATION
 BRIDGE No 31 - RICHMOND, VERMONT

SCALE	NIS	APPROVED BY	DRAWN BY: KAJ
DATE:	2/18/09	CHKD. BY: CND5 - DB2	
BRIDGE @ HIGHWAY #1 OVER WINOOSKI RIVER		STEEL FRAMING PLAN	
T BUCK CONSTRUCTION		DWG NO. 09-113 - E1	