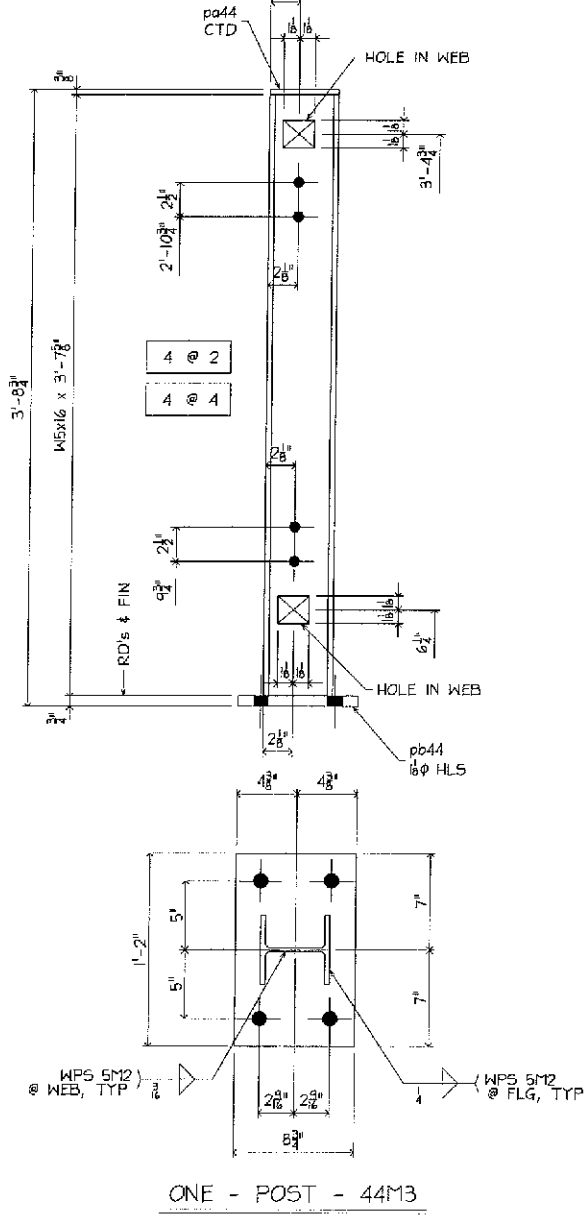
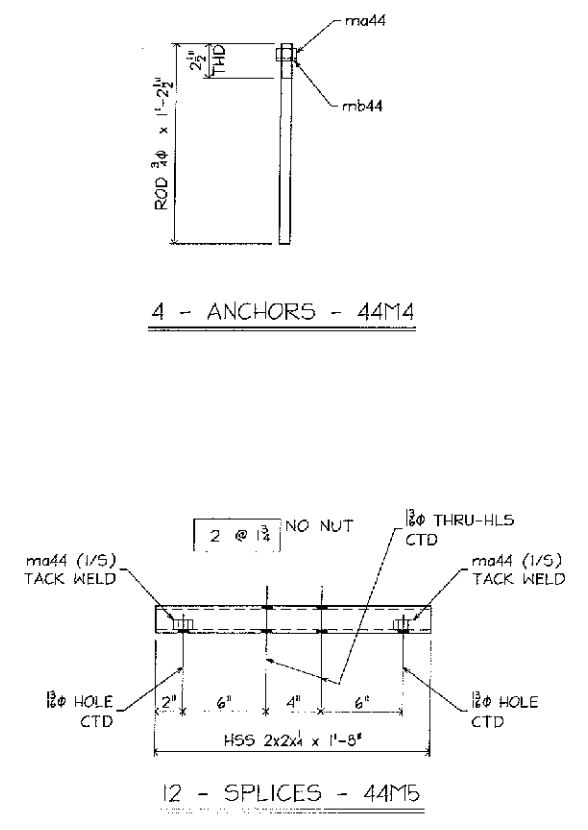


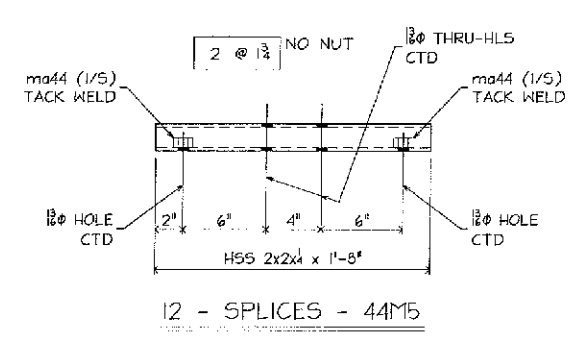
58 - POSTS - 44M1
5 - POSTS - 44M2 (AS NOTED)



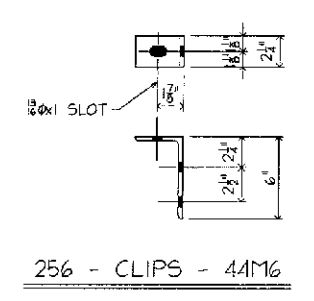
ONE - POST - 44M3



4 - ANCHORS - 44M4



12 - SPLICES - 44M5



256 - CLIPS - 44M6

DESIGNED BY	4/20/09
CHECKED BY	7/2/09
DATE	

GALVANIZED
ALL WELDS SEALED
VENT AS REQUIRED

24 - 1/2" x 1/2" (A205 GALV.) BOLT W/ WASH
256 - 1/2" x 2" (A205 GALV.) BOLT W/ WASH
256 - 1/2" x 4" (A205 GALV.) BOLT W/ WASH

BILL OF MATERIAL						
MARKS	QTY	MATERIAL	FT	LN	OR	REMARKS
44M1	12	POST	5	0		
44M2	5	POST	5	0		
44M3	1	POST	5	0		
44M4	4	ANCHOR	0	0		
44M5	12	SPLICE	0	0		
44M6	256	CLIP	0	0		

STEEL
1. ALL STEEL SHALL CONFORM TO AASHTO M 270/PS 270
CORROS. RES. (UNLESS NOTED)
WELDED: E70XX (SHOP NOTE)
COATING: F-4 UNO
FINISH: SSPC-SP10
PANEL GALVANIZED PER A578 A-128
W/SPR PER APPL. COMMENTS DATED 3/11/09
REVISE SHALL=POST CORNERS

ARC ENTERPRISES, INC.
KINGFIELD, MAINE

PROJECT: STATE OF VERMONT - AGENCY OF TRANSPORTATION
BRIDGE No. 31 - RICHMOND, VERMONT

SCALE: AS SHOWN
DATE: 2/15/09
DESIGNED BY: JWB
CHECKED BY: JWB

1 BLOCK CONSTRUCTION