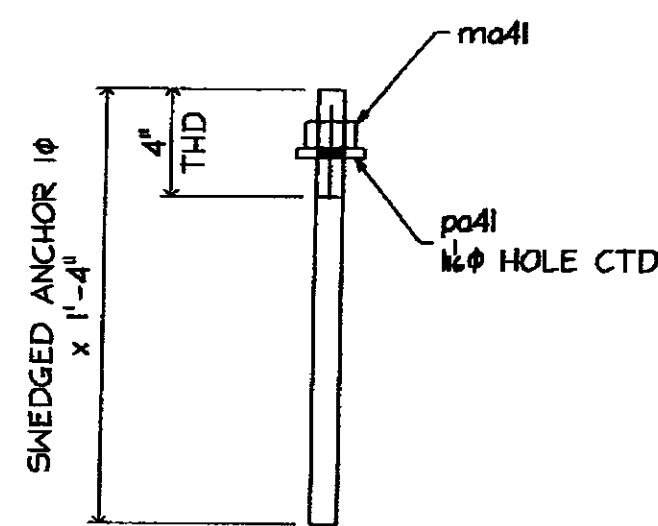
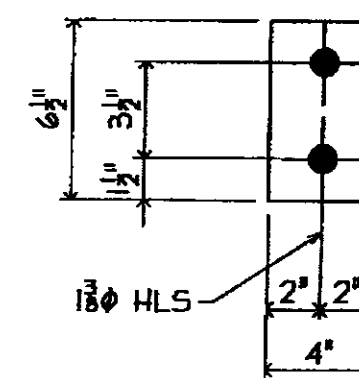


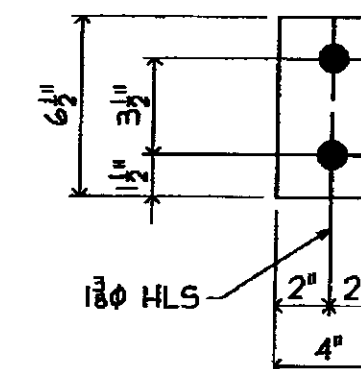
18 - BEAMS - 41B1



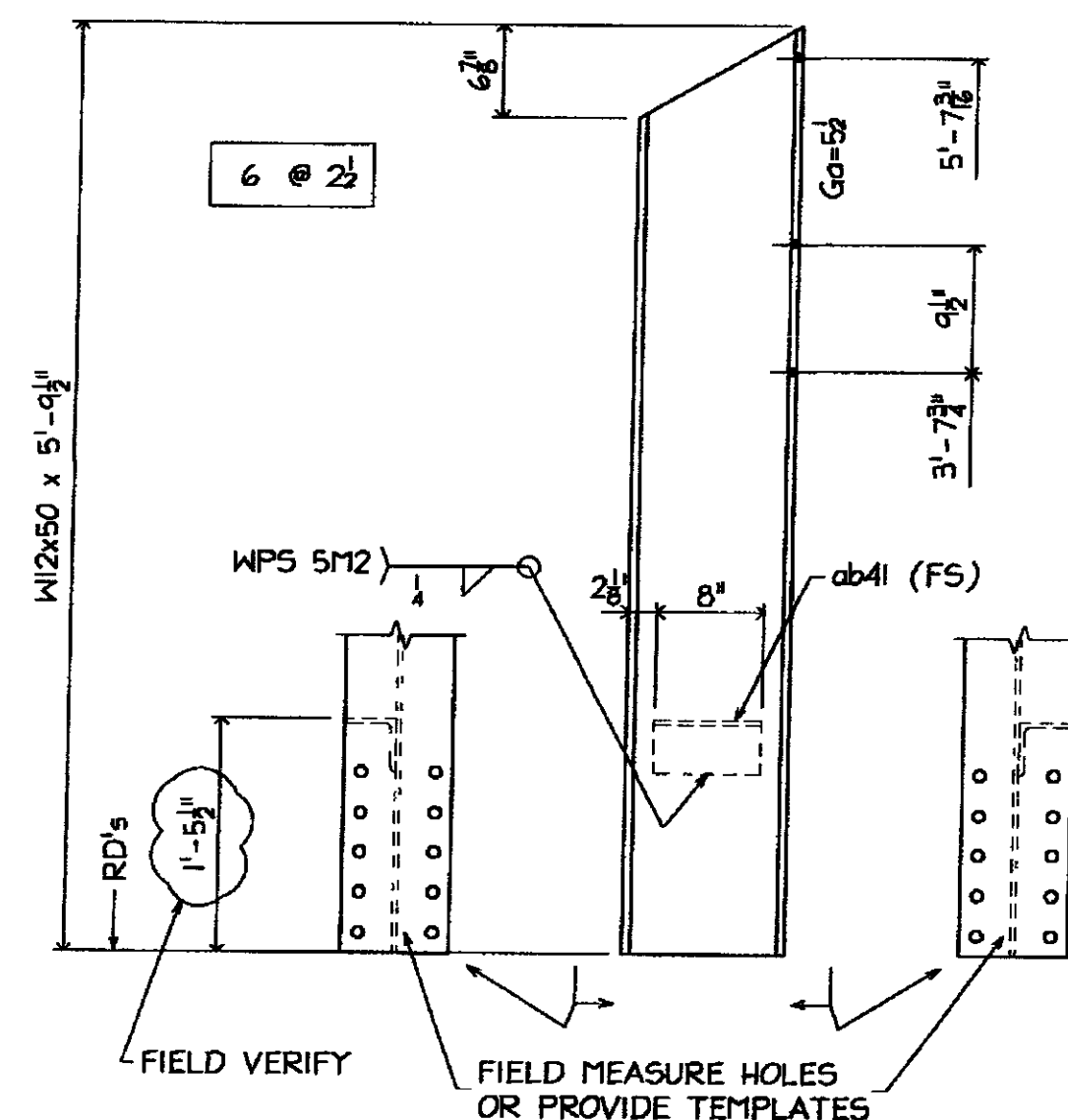
12 - ANCHORS - 41M2



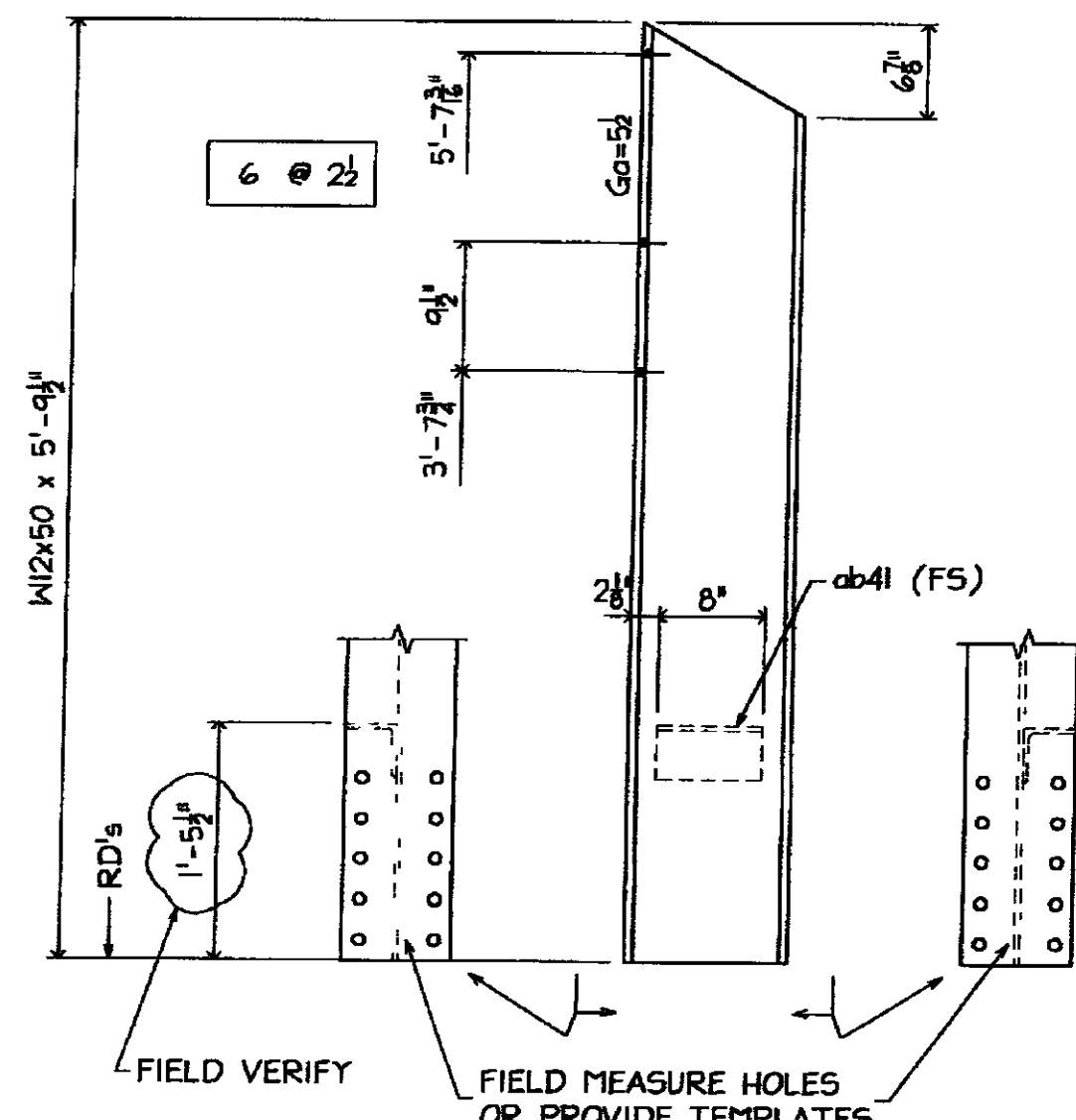
6 - BRG R's - 41M3
(R.B.)



6 - ELAST PADS - 41M4
(6 THK)

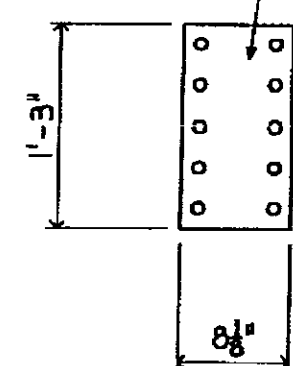


ONE - POST - 41B5



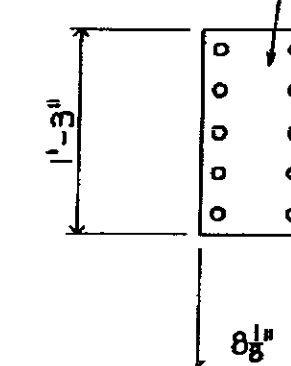
ONE - POST - 41B6

FIELD MEASURE HOLES OR PROVIDE TEMPLATES



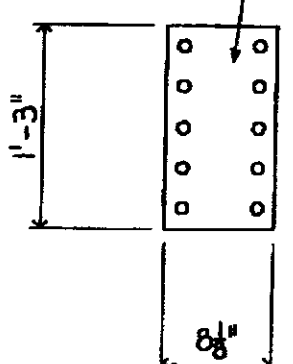
ONE - SHIM PL - 41M9
(R.B.)

FIELD MEASURE HOLES OR PROVIDE TEMPLATES



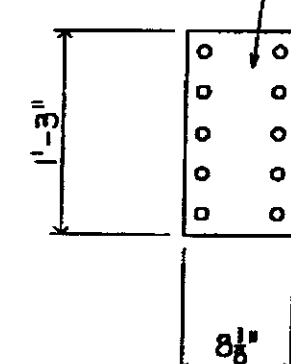
ONE - SHIM PL - 41M10
(R.B.)

FIELD MEASURE HOLES OR PROVIDE TEMPLATES

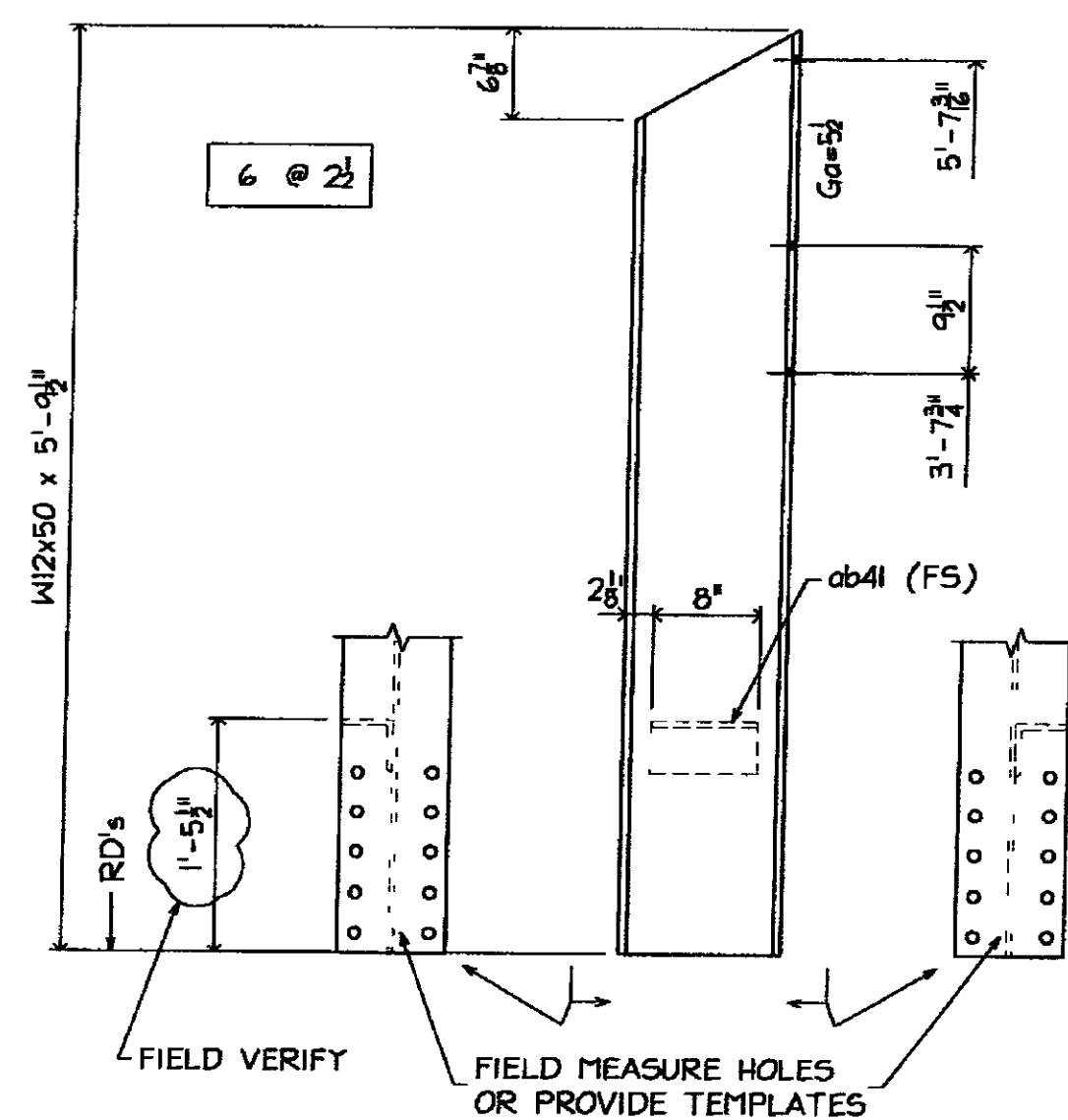


ONE - SHIM PL - 41M11
(R.B.)

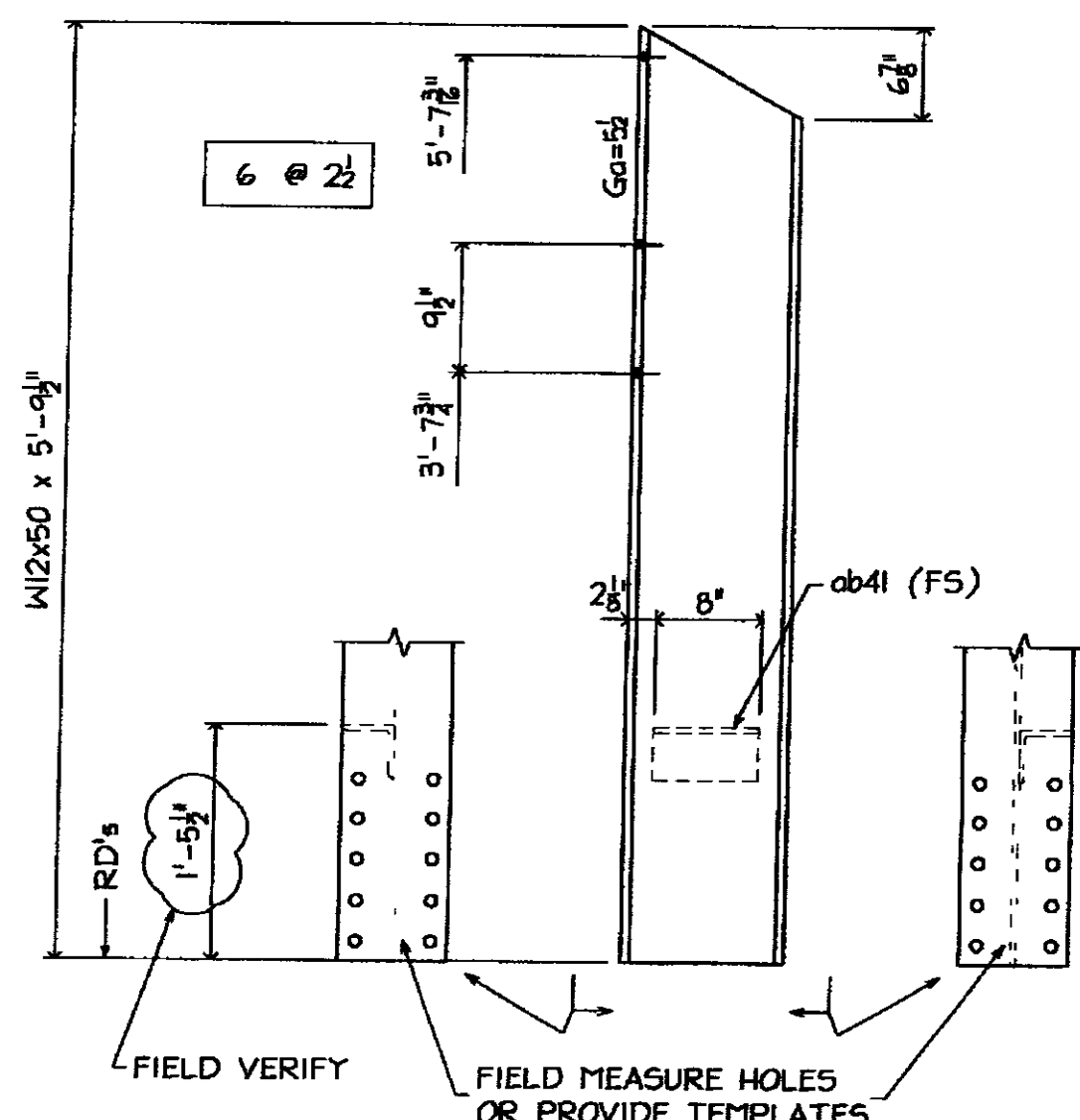
FIELD MEASURE HOLES OR PROVIDE TEMPLATES



ONE - SHIM PL - 41M12
(R.B.)



ONE - POST - 41B7



ONE - POST - 41B8

SHOP DRAWINGS ARE REVIEWED UNLESS NOTED OTHERWISE	
NO EXCEPTION TAKEN	<input checked="" type="checkbox"/>
REVISIONS NOTED	<input type="checkbox"/>
RESUBMISSION NOT REQUIRED	<input type="checkbox"/>
REVISIONS NOTED	<input type="checkbox"/>
RESUBMISSION REQUIRED	<input type="checkbox"/>
REJECTED	<input type="checkbox"/>
DATE	3/24/19
SIGNATURE	Zet
REVIEW BY STANTEC IS FOR THE SOLE PURPOSE OF ASCERTAINING GENERAL CONFORMITY WITH DESIGN. CONTRACTOR IS RESPONSIBLE FOR DIMENSIONS, FABRICATION AND CONSTRUCTION METHODS, COORDINATION OF SUB-TRADES, DETAIL DESIGN OF COMPONENTS, AND ERRORS OR OMISSIONS ON SHOP DRAWINGS.	

GALVANIZING NOTES
 1 ALL WELDS SHALL BE SEALED
 2 VENT AS REQUIRED
 3 COMPLETE FINAL ASSEMBLY OF BOLTED ITEMS AFTER GALVANIZING. WIRE-BRUSH ALL CONTACTING SURFACES TO A DULL-GRAY APPEARANCE PRIOR TO ASSEMBLY

FB THIS DWG

72- 3/8 x 2 1/2 (A325 GALV.) BOLT w/N/W
 24- 3/8 x 2 1/2 (A325 GALV.) BOLT w/N/W
 72- 3/8 x 3 (A325 GALV.) BOLT w/N/W

BILL OF MATERIAL

MARKS	SHIP TEMP	QTY	MATERIAL	FT	IN	GR	REMARK'S
41B1		18	W12x35	8	1/2		
		aa41	L4x4x3/8	0	9		
41M2		12	SWAGED ANCHOR 1/8	1	4	A307	THD
		pa41	R3 x 2 1/2	0	2 1/2		
		ma41	HVY HEX NUT 1/8				
41M3		6	R3 x 4	0	6		
41M4		6	ELAST PAD 1/2 x 4	0	6		
41B5		ONE	W12x50	5	9 1/2		BIE
		ab41	L4x4x3/8	0	8		
41B6		ONE	W12x50	5	9 1/2		BIE
		ab41	L4x4x3/8	0	8		
41B7		ONE	W12x50	5	9 1/2		BIE
		ab41	L4x4x3/8	0	8		
41B8		ONE	W12x50	5	9 1/2		BIE
		ab41	L4x4x3/8	0	8		
41M9		ONE	R3 x 2 1/2	1	3	G3%	
41M10		ONE	R3 x 2 1/2	1	3	G3%	
41M11		ONE	R3 x 2 1/2	1	3	G3%	
41M12		ONE	R3 x 2 1/2	1	3	G3%	

MATL

- ALL MAT'L SHALL CONFORM TO AASHTO M 270/M 270 GRADE 50 (UNLESS NOTED)
- 'CVN' INDICATES CHARPY 'V' NOTCH TESTED
- 'FCM' INDICATES 'FRACTURE CRITICAL MEMBER'

WELD: E70xx

HOLES: 1/8" UNO

PREP: SSPC-SP8

PAINT: GALVANIZED AND AIR COOLED (NOT QUENCHED)
(SEE GALVANIZING NOTES)

3/11/09 PER APPL COMMENTS DATED 3/06/09

ARC ENTERPRISES, INC.
KINGFIELD, MAINE

PROJECT: STATE OF VERMONT - AGENCY OF TRANSPORTATION
BRIDGE No 31 - RICHMOND, VERMONT

SCALE: NTS APPROVED BY: DRAWN BY: KAJ
DATE: 2/18/09 CHKD BY: CMS-082

BRIDGE # HIGHWAY #1 OVER WINGOSKI RIVER
MISC DETAILS

T BUCK CONSTRUCTION

DWG NO 09-113 - 41 A