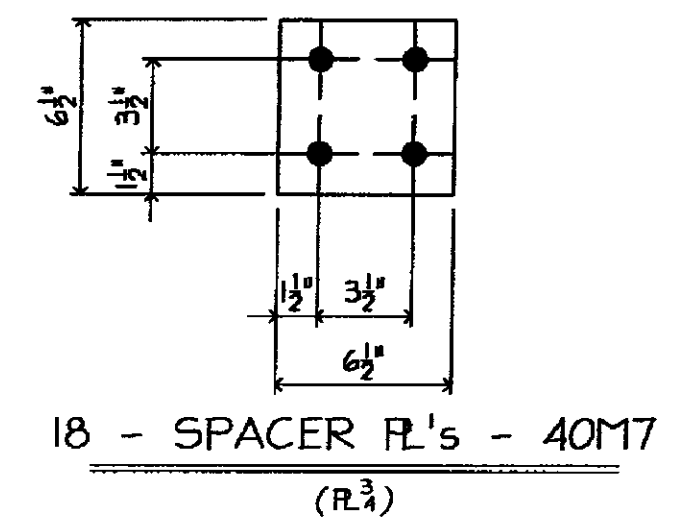
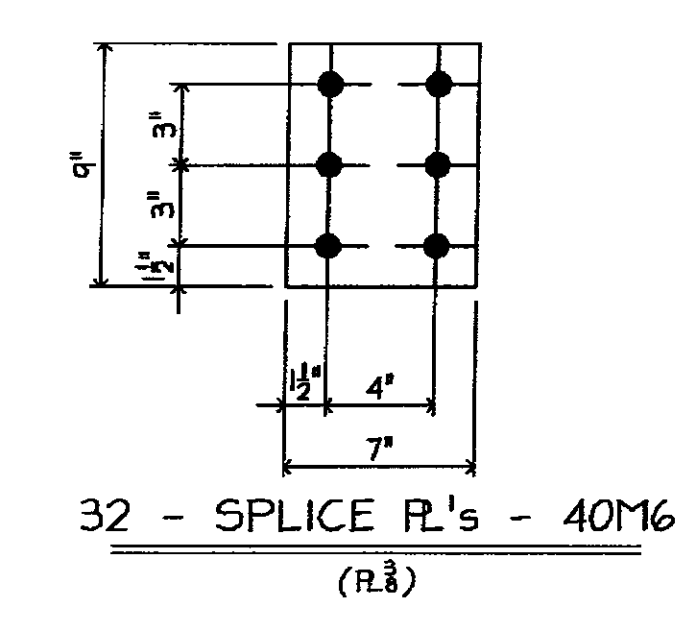


BILL OF MATERIAL								
MARKS	SHIP	TEMP	QTY	MATERIAL	FT	IN	GR	REMARK'S
40B1			ONE	W12x35	17	5 3/8		B/E
	pa40		3	R3 x 3	0	11 1/8		SHAPED
40B2			ONE	W12x35	17	5 3/8		B/E
40B3			2	C9x13.4	3	8		
	pb40		2	R3 x 6	0	7		BEND
	pc40		2	R3 x 6	0	7		BEND
40B4			33	W14x22	0	9		
40B5			30	W6x15	0	9		
40M6			32	R3 x 7	0	9		
40M7			18	R3 x 6 1/2	0	6 1/2		



NO EXCEPTION TAKEN		
REVISION NOTED	REVISION NOT REQUIRED	
REVISION NOTED	REVISION REQUIRED	
REJECTED		
DATE	3/24/19	
SIGNATURE	TLC	
<small>REVIEW BY STANTEC IS FOR THE SOLE PURPOSE OF ASCERTAINING GENERAL CONFORMITY WITH DESIGN. CONTRACTOR IS RESPONSIBLE FOR DIMENSIONS, FABRICATION AND CONSTRUCTION METHODS, COORDINATION OF SUB-TASKS, DETAIL DESIGN OF COMPONENTS, AND ERRORS OR OMISSIONS ON SHOP DRAWINGS.</small>		

**GALVANIZING NOTES:**  
 1 ALL WELDS SHALL BE SEALED  
 2 VENT AS REQUIRED  
 3 COMPLETE FINAL ASSEMBLY OF BOLTED ITEMS AFTER GALVANIZING WIRE-BRUSH ALL CONTACTING SURFACES TO A DULL-GRAY APPEARANCE PRIOR TO ASSEMBLY

FB THIS DWG  
 274- 3/8" x 2 (A325 GALV.) BOLT w/NW

**MATL**  
 1 ALL MAT'L SHALL CONFORM TO AASHTO M 270/M 270 GRADE 50 (UNLESS NOTED)  
 2 'CVN' INDICATES CHARNY 'V' NOTCH TESTED  
 3 'FCM' INDICATES 'FRACTURE CRITICAL MEMBER'  
**WELD:** E70xx  
**HOLES:** 1/2" UNO  
**PREP:** SSPC-SP8  
**PAINT:** GALVANIZED AND AIR COOLED (NOT QUENCHED) (SEE GALVANIZING NOTES)

3/11/09 PER APPL COMMENTS DATED 3/06/09

**ARC ENTERPRISES, INC.**  
**KINGFIELD, MAINE**

PROJECT: STATE OF VERMONT - AGENCY OF TRANSPORTATION  
 BRIDGE No 31 - RICHMOND, VERMONT

SCALE: NTS	APPROVED BY:	DRAWN BY: KAJ
DATE: 2/18/09	CHKD BY: CMS-DBZ	
BRIDGE # HIGHWAY #1 OVER WINOOSKI RIVER SIDEWALK STRINGER DETAILS		
T BUCK CONSTRUCTION	DWG NO	09-113 - 40