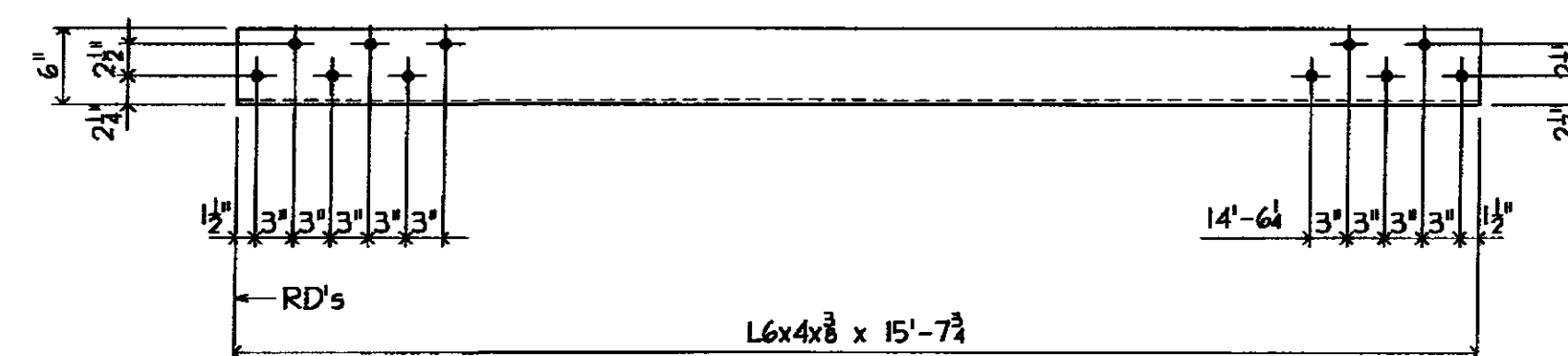
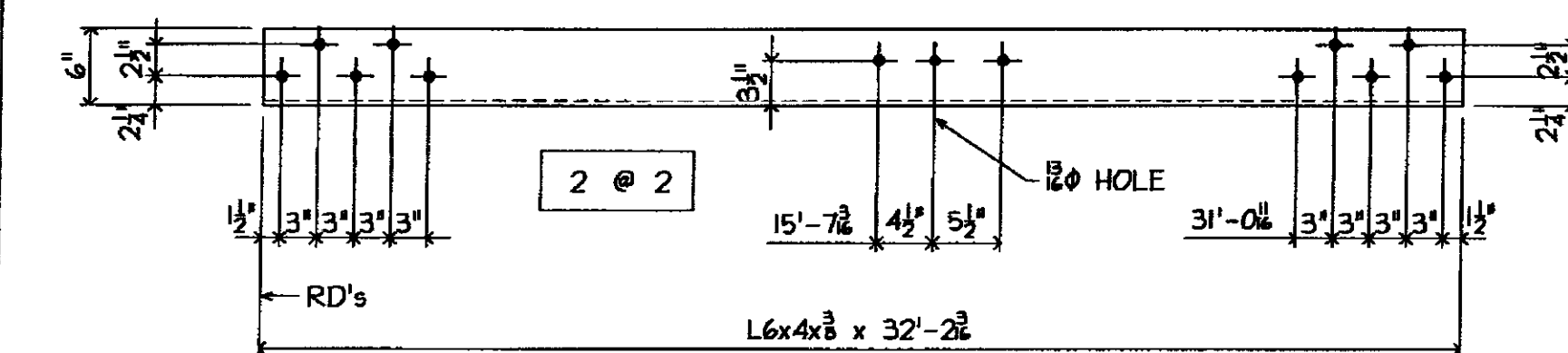


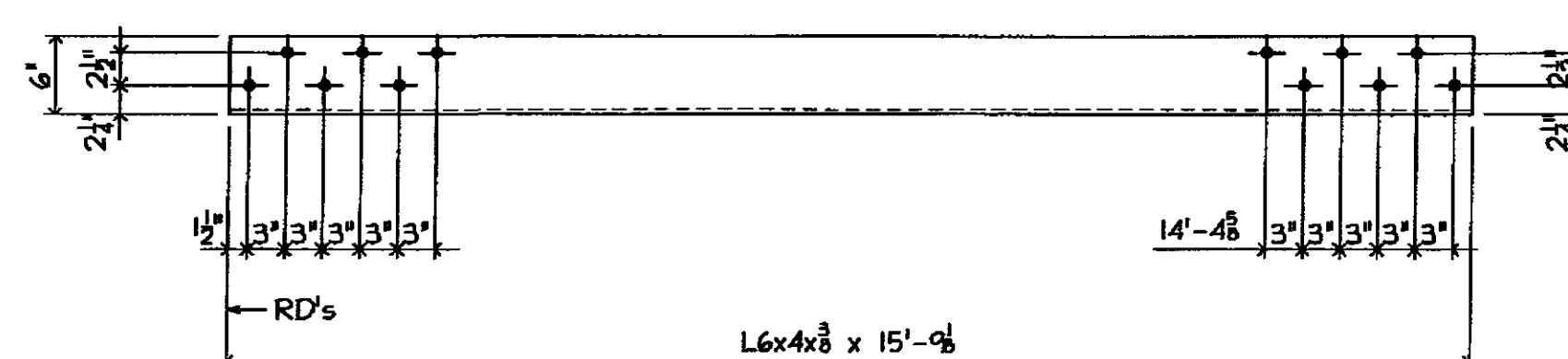
ONE - ANGLE - 33A1



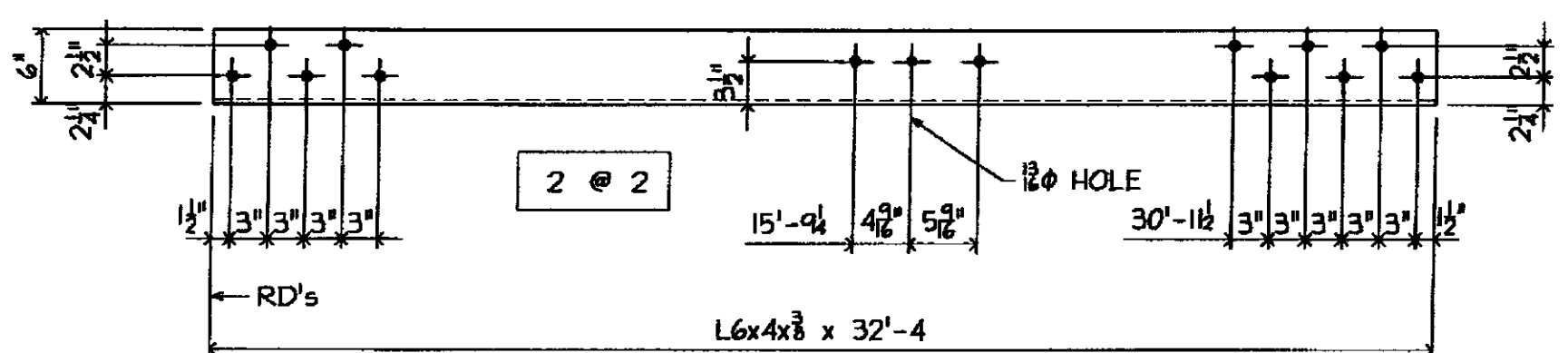
7 - ANGLES - 33A7



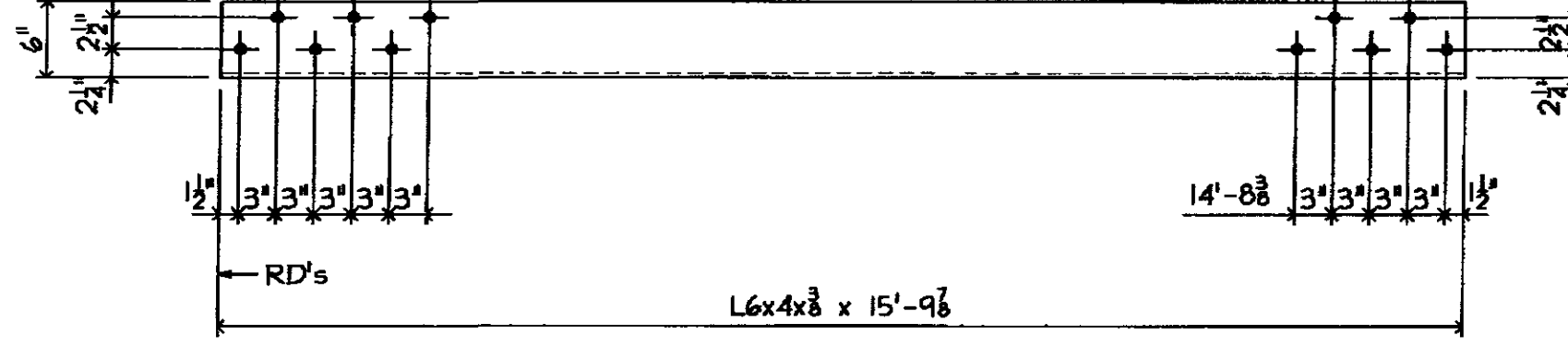
7 - ANGLES - 33A2



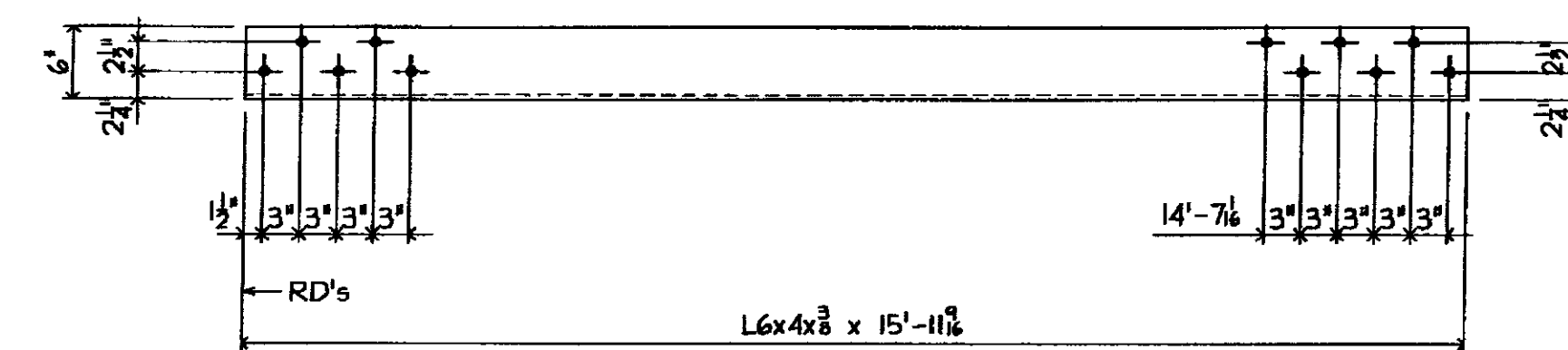
ONE - ANGLE - 33A8



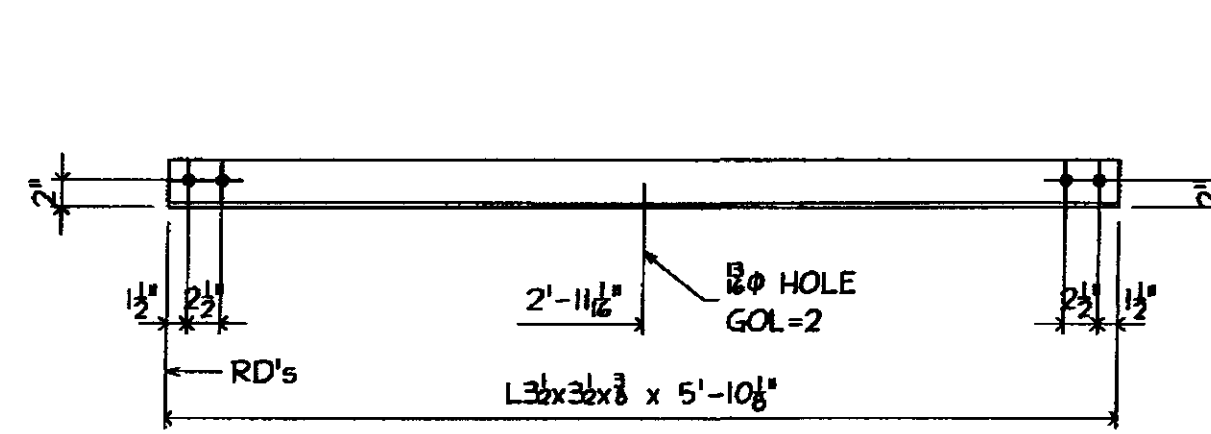
ONE - ANGLE - 33A3



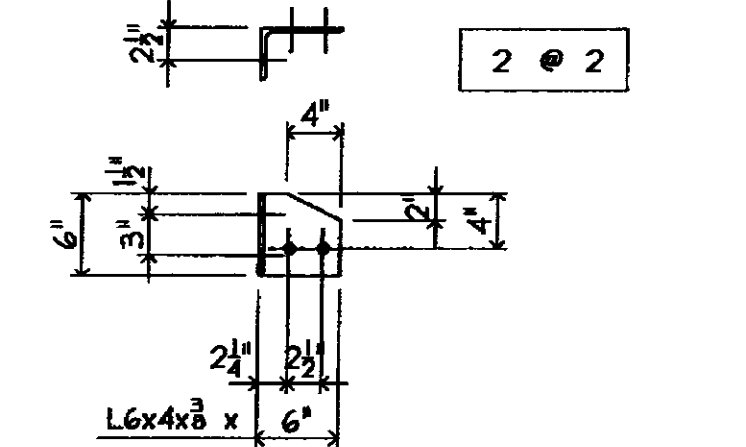
ONE - ANGLE - 33A9



ONE - ANGLE - 33A4

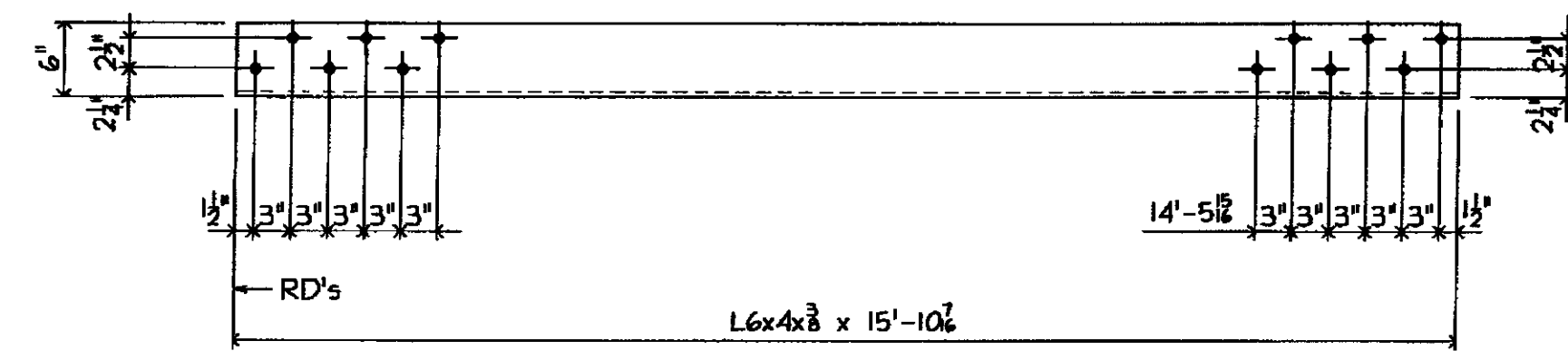


9 - ANGLES - 33A10

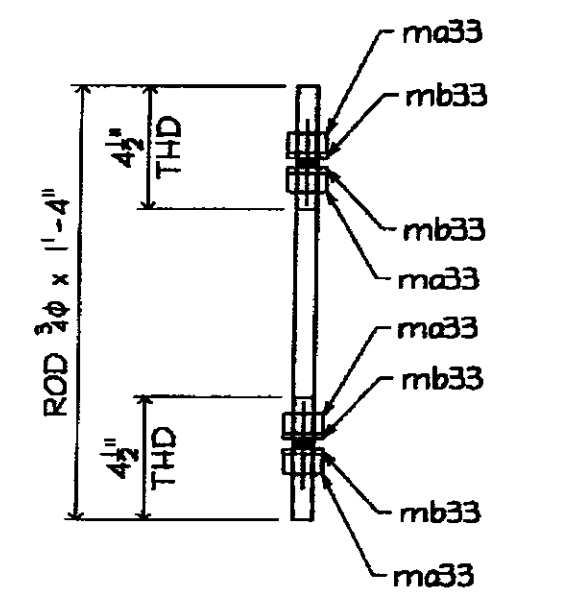


9 - ANGLES - 33A11 (AS SHOWN)

9 - ANGLES - 33A12 (OPP HAND)



ONE - ANGLE - 33A5



9 - THD RODS - 33M13

NO EXCEPTION TAKEN		
REUSE SHOWN	RESUBMISSION NOT REQUIRED	
REUSE SHOWN	RESUBMISSION REQUIRED	
REUSE		
DATE	3/24/09	
SIGNATURE	TEL	

REMAIN BY STANTEC IS FOR THE SOLE PURPOSE OF ASCERTAINING GENERAL CONFORMITY WITH DESIGN. CONTRACTOR IS RESPONSIBLE FOR DIMENSIONS, FABRICATION AND CONSTRUCTION METHOD, COORDINATION OF SUB-TRADES DETAIL DESIGN OF COMPONENTS, AND ERRORS OR OMISSIONS ON SHOP DRAWINGS.

GALVANIZING NOTES:
 1 ALL WELDS SHALL BE SEALED
 2 VENT AS REQUIRED
 3 COMPLETE FINAL ASSEMBLY OF BOLTED ITEMS AFTER GALVANIZING. WIRE-BRUSH ALL CONTACTING SURFACES TO A DULL-GRAY APPEARANCE PRIOR TO ASSEMBLY

FB THIS DWG
 54- 3/8 x 2 (A325 GALV) BOLT w/NUT

BILL OF MATERIAL

MARKS	SHIP TEMP	QTY	MATERIAL	FT	IN	GR	REMARKS
33A1		ONE	L6x4x8	32	7		
33A2		7	L6x4x8	32	2 1/2		
33A3		ONE	L6x4x8	32	4		
33A4		ONE	L6x4x8	15	11 1/2		
33A5		ONE	L6x4x8	15	10 1/2		
33A6		7	L6x4x8	15	9 1/2		
33A7		7	L6x4x8	15	7 1/2		
33A8		ONE	L6x4x8	15	9 1/2		
33A9		ONE	L6x4x8	15	9 1/2		
33A10		9	L3x3x3/8	5	10 1/2		
33A11		9	L6x4x8	0	6		
33A12		9	L6x4x8	0	6		
33M13		9	ROD 3/8	1	4		THD BVE
		36	HVT HEX NUT 3/8				A307 GALV
		36	FLAT WASHER 3/8				A307 GALV

MATL
 1 ALL MAT'L SHALL CONFORM TO AASHTO M 270/M 270 GRADE 50 (UNLESS NOTED)
 2 'CVN' INDICATES CHARTY 'V' NOTCH TESTED
 3 'FCM' INDICATES 'FRACTURE CRITICAL MEMBER'

WELDS: E70xx
HOLES: 1/2" UNO
PREP: SSPC-SP8
PAINT: GALVANIZED AND AIR COOLED (NOT QUENCHED) (SEE GALVANIZING NOTES)

3/11/09 PER APP'L COMMENTS DATED 3/06/09

ARC ENTERPRISES, INC.
KINGFIELD, MAINE

PROJECT: STATE OF VERMONT - AGENCY OF TRANSPORTATION
 BRIDGE No. 31 - RICHMOND, VERMONT

SCALE: NTS APPROVED BY: DRAWN BY: KAU
 DATE: 2/18/09 CHKD BY: CMS-DBZ

BRIDGE # HIGHWAY #1 OVER WINDOOSKI RIVER
 BRACING ANGLES DETAILS

T BUCK CONSTRUCTION DWG NO. 09-113 - 33/A