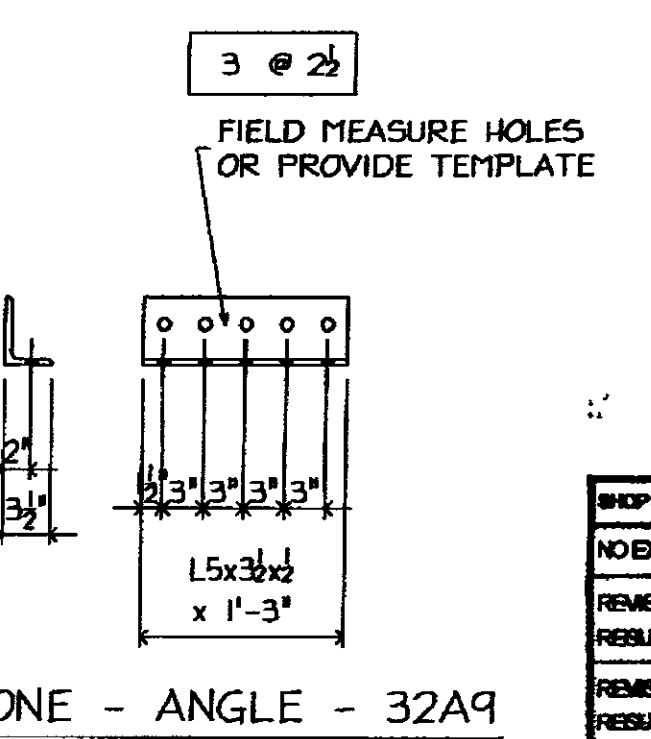
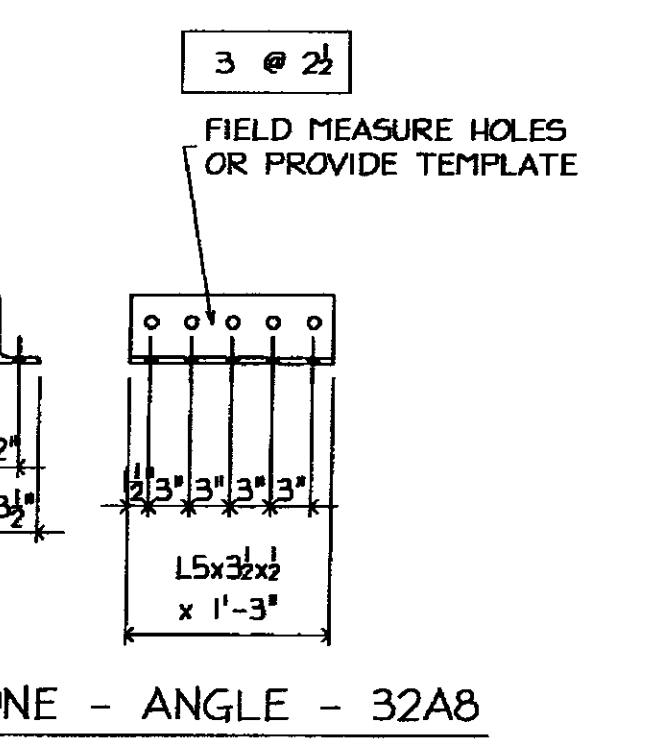
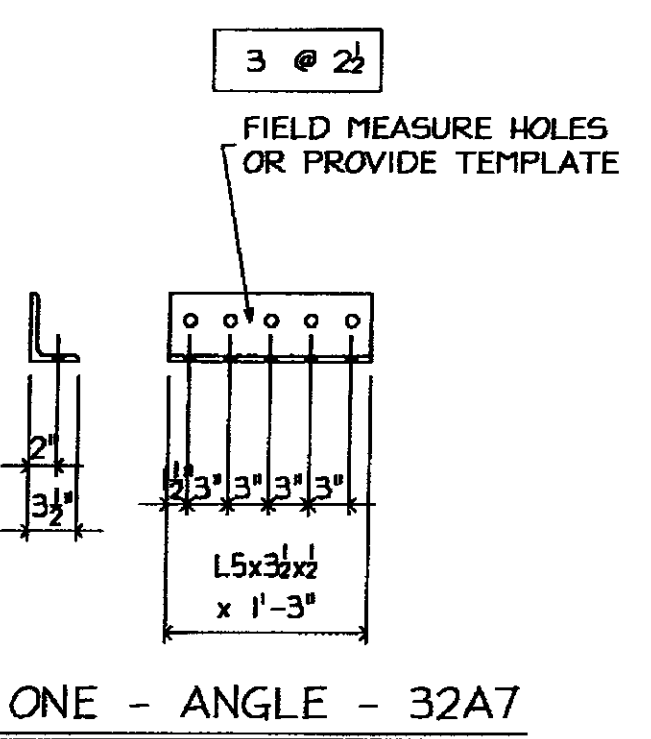
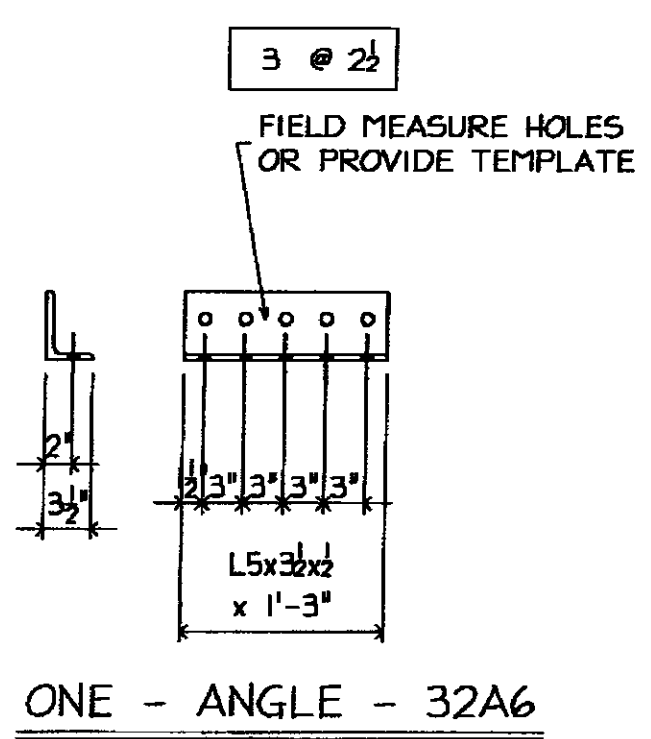


SHOP NOTE:
* = DIMENSIONS ARE GIVEN TO WORK LINE, NOT HOLES



| | | | |
|--|------------------------|------------------------|------------------------|
| NO EXCEPTION TAKEN | REVISIONS NOT REQUIRED | REVISIONS NOT REQUIRED | REVISIONS NOT REQUIRED |
| DATE: 3/21/19 | SIGNATURE: [Signature] | | |
| <small>DESIGNED BY STANTEC IS FOR THE SOLE PURPOSE OF ASCERTAINING GENERAL CONFORMITY WITH DESIGN. CONTRACTOR IS RESPONSIBLE FOR DIMENSIONS, FABRICATION AND CONSTRUCTION METHODS. COORDINATION OF SUB-TRADES, DETAIL DESIGN OF COMPONENTS AND ERRORS OR OMISSIONS ON SHOP DRAWINGS.</small> | | | |

GALVANIZING NOTES
 1. ALL WELDS SHALL BE SEALED
 2. VENT AS REQUIRED
 3. COMPLETE FINAL ASSEMBLY OF BOLTED ITEMS AFTER GALVANIZING. WIRE-BRUSH ALL CONTACTING SURFACES TO A DULL-GRAY APPEARANCE PRIOR TO ASSEMBLY

FB THIS DWG
 108- 3/8 x 2 (A325 GALV) BOLT w/N/W
 182- 3/8 x 2 (A325 GALV) BOLT w/N/W
 12- 3/8 x 2 (A325 GALV) BOLT w/N/W

| BILL OF MATERIAL | | | | | | | | |
|------------------|------|------|-----|-----------|----|-----|----|----------|
| MARKS | SHIP | TEMP | QTY | MATERIAL | FT | IN | GR | REMARK'S |
| 32M1 | | | 2 | R.L. x 14 | 2 | 7/8 | | |
| 32M2 | | | 2 | R.L. x 25 | 3 | 6/8 | | |
| 32M3 | | | 12 | R.L. x 25 | 3 | 6/8 | | |
| 32M4 | | | 2 | R.L. x 25 | 3 | 6/8 | | |
| 32M5 | | | 2 | R.L. x 14 | 2 | 7/8 | | |
| 32A6 | | | ONE | L5x3x2 | 1 | 3 | | |
| 32A7 | | | ONE | L5x3x2 | 1 | 3 | | |
| 32A8 | | | ONE | L5x3x2 | 1 | 3 | | |
| 32A9 | | | ONE | L5x3x2 | 1 | 3 | | |
| 32M10 | | | 2 | R.L. x 16 | 3 | 9 | | SHAPED |
| 32M11 | | | 7 | R.L. x 16 | 3 | 9 | | SHAPED |

MATL
 1. ALL MAT'L SHALL CONFORM TO AASHTO M 270/M 270 GRADE 50 (UNLESS NOTED)
 2. 'CVN' INDICATES CHARNY 'V' NOTCH TESTED.
 3. 'FCM' INDICATES 'FRACTURE CRITICAL MEMBER'

WELD E70xx
HOLES 1/2" UNO
PREP SSPC-SP8
PAINT GALVANIZED AND AIR COOLED (NOT QUENCHED) (SEE GALVANIZING NOTES)

3/11/09 PER APPL COMMENTS DATED 3/06/09

ARC ENTERPRISES, INC.
KINGFIELD, MAINE

PROJECT: STATE OF VERMONT - AGENCY OF TRANSPORTATION
 BRIDGE No 31 - RICHMOND, VERMONT

SCALE: NTS APPROVED BY: DRAWN BY: KJU
 DATE: 2/18/09 CHKD. BY: CUDS-DB2

BRIDGE # HIGHWAY #1 OVER WINOOSKI RIVER
 BRACING PLATE DETAILS

T BUCK CONSTRUCTION DWG NO 09-113 - 32A