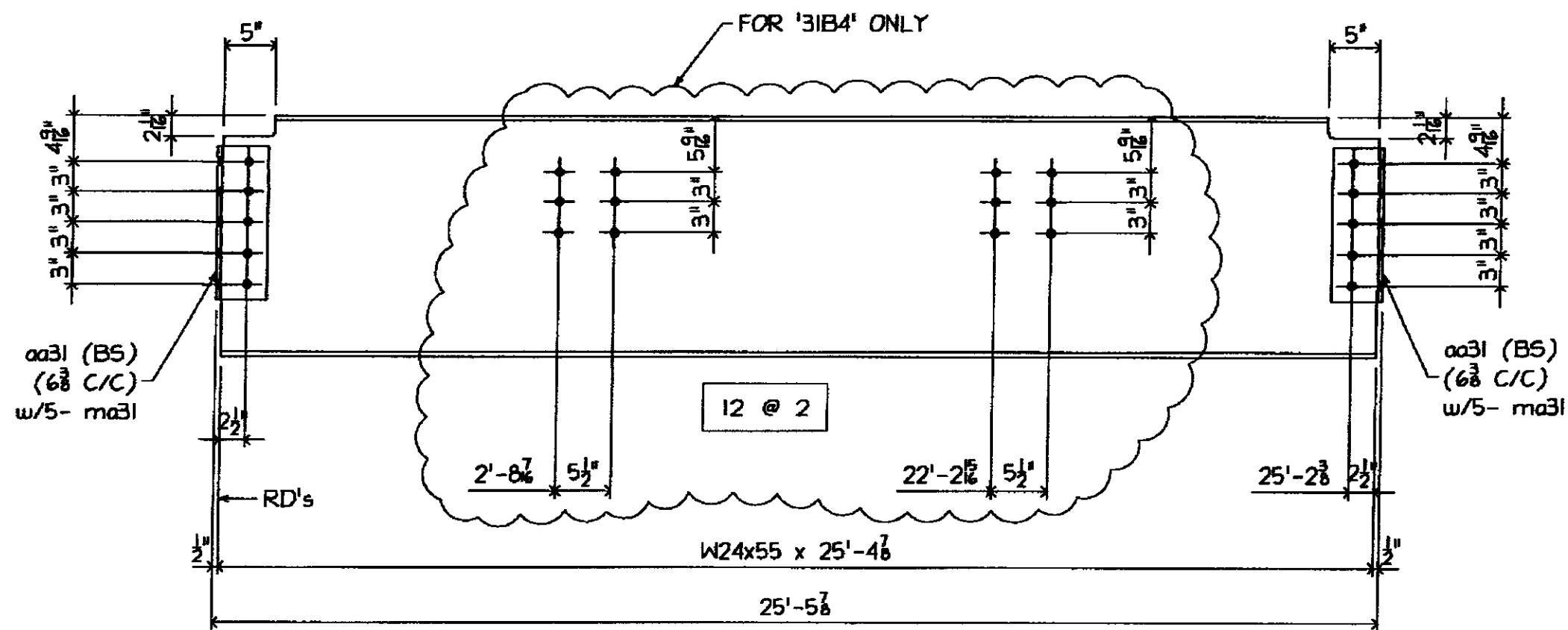
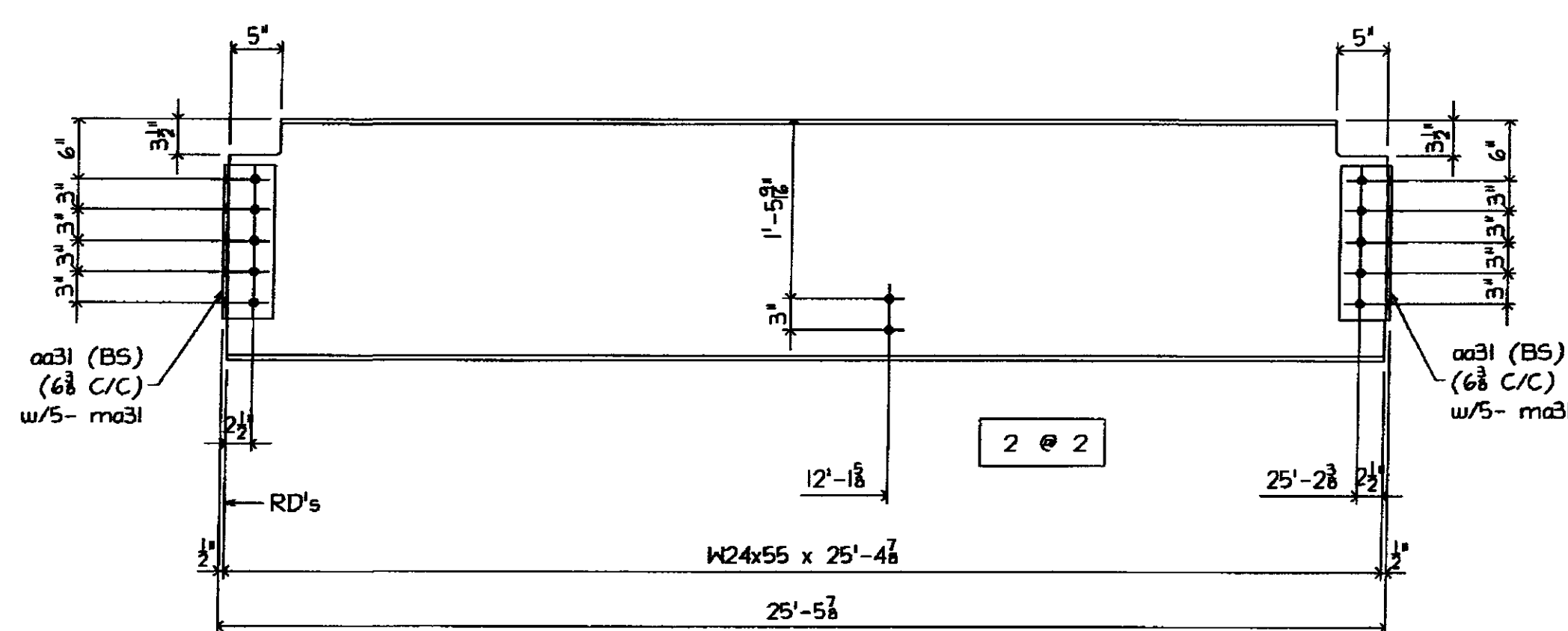


2 - BEAMS - 3IB1  
2 - BEAMS - 3IB2 (AS NOTED)



7 - BEAMS - 3IB3  
7 - BEAMS - 3IB4 (AS NOTED)

4 - BEAMS - 3IB5



14 - BEAMS - 3IB6

3IB5	aa31	16	L5x5x8	1	3				
	ma31	40	BOLT 3/8"	0	2	A325	w/NH		
3IB6	aa31	56	L5x5x8	1	3				
	ma31	140	BOLT 3/8"	0	2	A325	w/NH		

**MATL**

- ALL MAT'L SHALL CONFORM TO AASHTO M 270M/M 270 GRADE 50 (UNLESS NOTED)
- 'CVN' INDICATES CHARPY 'V' NOTCH TESTED.
- 'FCM' INDICATES 'FRACTURE CRITICAL MEMBER'

**WELD:** E70xx

**HOLES:** 1/2" UNO

**PREP:** SSPC-SP8

**PAINT:** GALVANIZED AND AIR COOLED (NOT QUENCHED) (SEE GALVANIZING NOTES)

3/11/09 PER APPL COMMENTS DATED 3/06/09

**ARC ENTERPRISES, INC.**  
**KINGFIELD, MAINE**

PROJECT: STATE OF VERMONT - AGENCY OF TRANSPORTATION  
BRIDGE No 31 - RICHMOND, VERMONT

SCALE: NTS APPROVED BY: DRAWN BY: XAU  
DATE: 2/18/09 CHKD BY: OMS-DBZ

BRIDGE # HIGHWAY #1 OVER WINOOSKI RIVER  
FLOOR STRINGER DETAILS

T BUCK CONSTRUCTION

DWG NO. 09-113 - 31

NO EXCEPTION TAKEN	<input checked="" type="checkbox"/>
REVISION NOTED	<input type="checkbox"/>
RESUBMISSION NOT REQUIRED	<input type="checkbox"/>
REVISION NOTED	<input type="checkbox"/>
RESUBMISSION REQUIRED	<input type="checkbox"/>
REQUIRED	<input type="checkbox"/>

DATE: 3/24/09  
SIGNATURE: [Handwritten Signature]

REVISION BY STANTEC IS FOR THE SOLE PURPOSE OF ASCERTAINING GENERAL CONFORMITY WITH DESIGN. CONTRACTOR IS RESPONSIBLE FOR DIMENSIONS, FABRICATION AND CONSTRUCTION METHOD. COORDINATION OF SUB-TRADES DETAIL DESIGN OF COMPONENTS, AND ERRORS OR OMISSIONS ON SHOP DRAWINGS.

**GALVANIZING NOTES:**  
1. ALL WELDS SHALL BE SEALED  
2. VENT AS REQUIRED  
3. COMPLETE FINAL ASSEMBLY OF BOLTED ITEMS AFTER GALVANIZING. WIRE-BRUSH ALL CONTACTING SURFACES TO A DULL-GRAY APPEARANCE PRIOR TO ASSEMBLY

FB THIS DWG  
144- 3/8" x 2 (A325 GALV) BOLT w/NH