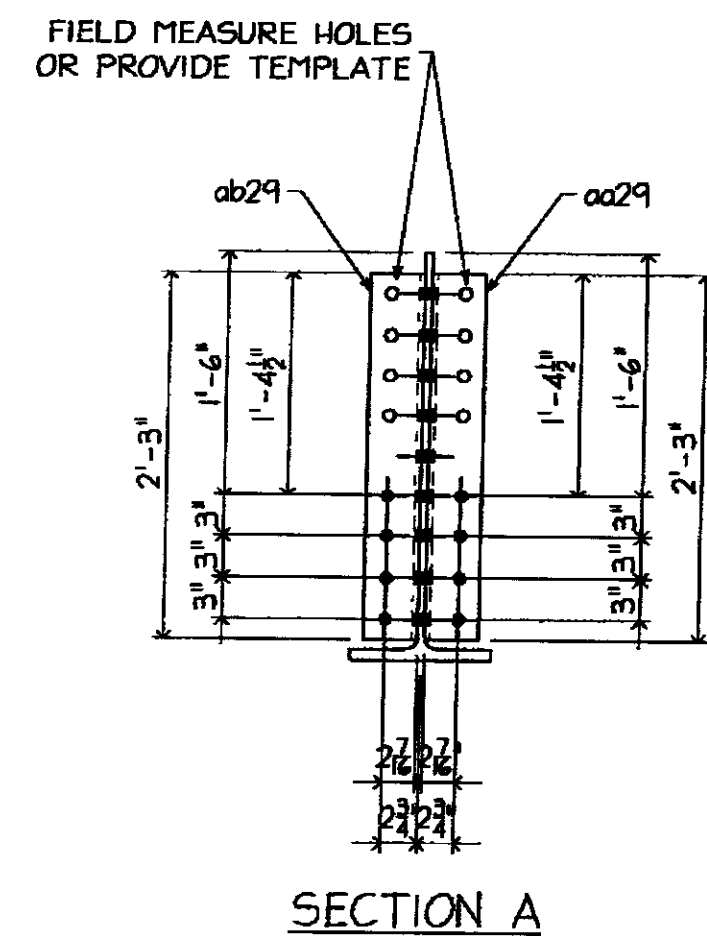
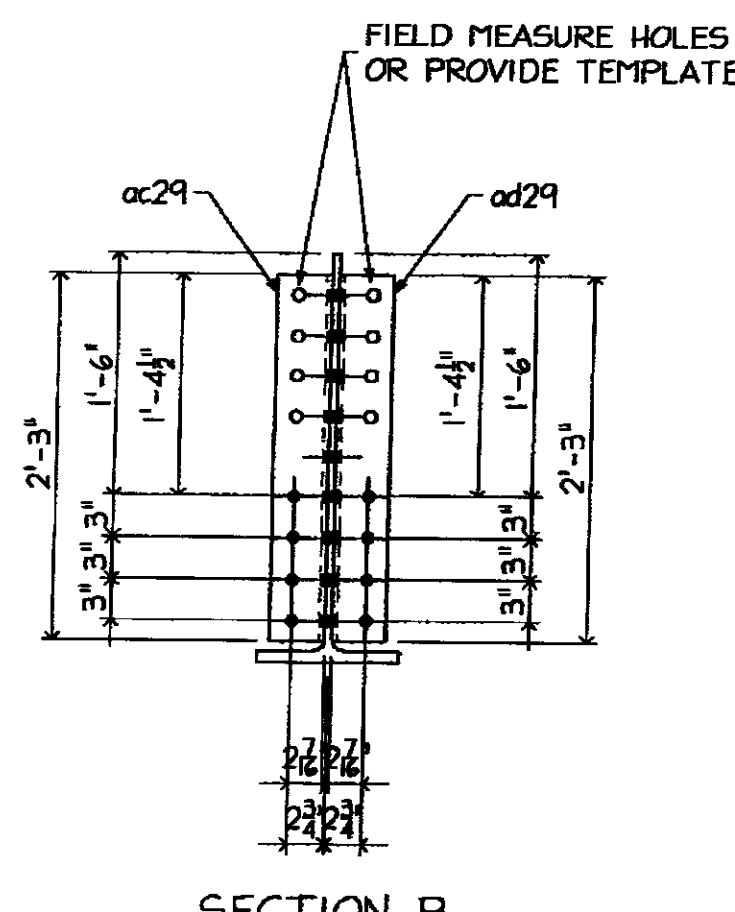


ONE - BEAM - 29BI



SECTION A



SECTION B

NO EXCEPTION TAKEN		
REVISION NOTED		
REVISION NOT NOTED		
REVISION NOTED		
DATE	3/2/09	
DESIGNER	7CL	
<small>REVISION BY STANTEC IS FOR THE SOLE PURPOSE OF ASCERTAINING GENERAL CONFORMITY WITH DESIGN. CONTRACTOR IS RESPONSIBLE FOR DIMENSIONS, FABRICATION AND CONSTRUCTION METHODS, COORDINATION OF SUB-TRADES, DETAIL DESIGN OF COMPONENTS, AND ERRORS OR OMISSIONS ON SHOP DRAWINGS.</small>		

GALVANIZING NOTES.
 1 ALL WELDS SHALL BE SEALED
 2 VENT AS REQUIRED
 3 COMPLETE FINAL ASSEMBLY OF BOLTED ITEMS AFTER GALVANIZING. WIRE-BRUSH ALL CONTACTING SURFACES TO A DULL-GRAY APPEARANCE PRIOR TO ASSEMBLY

FB THIS DWG
 56- 3/8 x 2 1/2 (A325 GALV.) BOLT w/N/W

BILL OF MATERIAL

MARKS	SHIP	TEMP	QTY	MATERIAL	FT	IN	GR	REMARK'S
29BI			ONE	W30x116	21	9 7/8		CVN
			1	L6x4x3/8	2	3		
			1	L6x4x3/8	2	3		
			1	L6x4x3/8	2	3		
			1	L6x4x3/8	2	3		
			22	SHEAR STUD 3/8	0	6		
			18	BOLT 3/8	0	2 1/2	A325 GALV	w/N/W

MATL.
 1 ALL MAT'L SHALL CONFORM TO AASHTO M 270M/1M 270 GRADE 50 (UNLESS NOTED)
 2 'CVN' INDICATES CHARPY 'V' NOTCH TESTED.
 3 'FCM' INDICATES 'FRACTURE CRITICAL MEMBER'

WELD. E70xx
HOLES. 1/2" UNO
PREP. SSPC-SP8
PAINT: GALVANIZED AND AIR COOLED (NOT QUENCHED) (SEE GALVANIZING NOTES)

3/11/09 PER APPL COMMENTS DATED 3/06/09

ARC ENTERPRISES, INC.
 KINGFIELD, MAINE

PROJECT STATE OF VERMONT - AGENCY OF TRANSPORTATION
 BRIDGE No 31 - RICHMOND, VERMONT

SCALE: NTS APPROVED BY: DRAWN BY: KM
 DATE: 2/18/09 CHKD BY: CMS-082

BRIDGE # HIGHWAY #1 OVER WINOOSKI RIVER
 FLOOR BEAM DETAILS

T BUCK CONSTRUCTION DWG NO 09-113 - 29/A