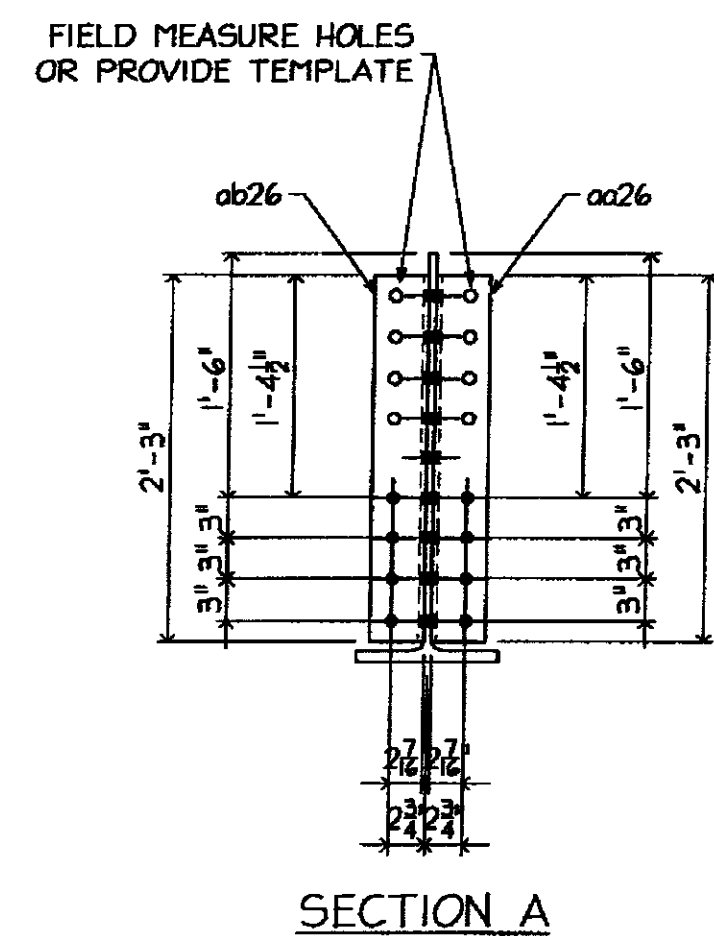
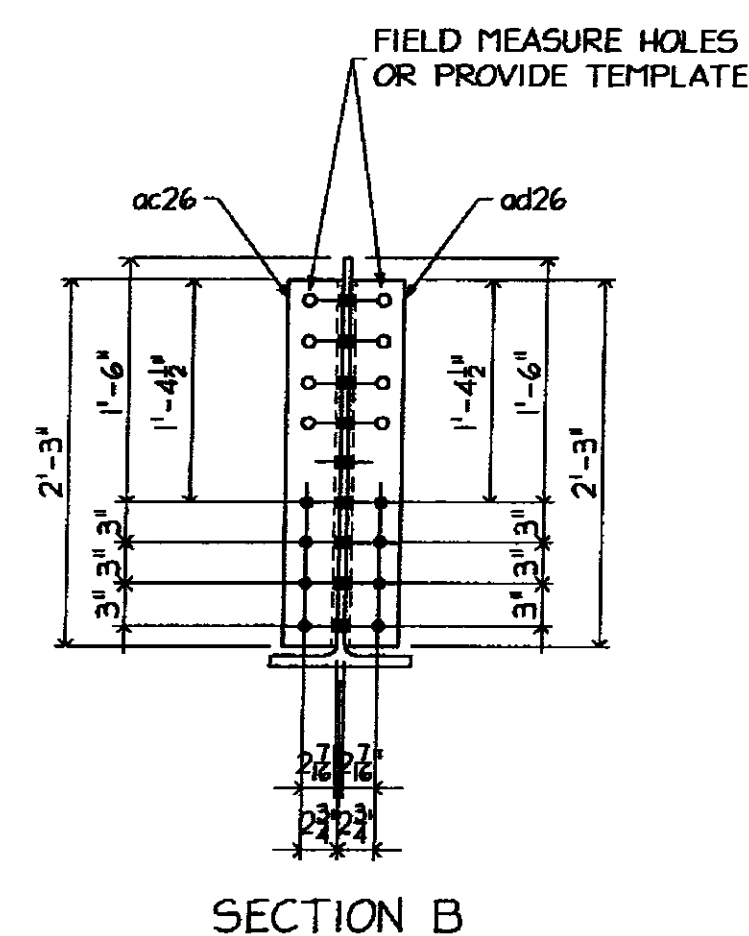


ONE - BEAM - 26BI



SECTION A



SECTION B

NO EXCEPTION TAKEN

REVISIONS:

NO EXCEPTION TAKEN	
REVISION NOTED	
REVISION NOT REQUIRED	
REVISION NOTED	
REVISION NOT REQUIRED	
REVISION	

DATE: 3/27/09

TEK

FOR THE CONTRACTOR'S USE ONLY: THIS DRAWING IS FOR THE SOLE PURPOSE OF ASCERTAINING GENERAL CONFORMITY WITH DESIGN. CONTRACTOR IS RESPONSIBLE FOR DIMENSIONS, FABRICATION AND CONSTRUCTION METHODS, COORDINATION OF SUBTRADES, DETAIL DESIGN OF COMPONENTS, AND ERRORS OR OMISSIONS ON SHOP DRAWINGS.

GALVANIZING NOTES

1. ALL WELDS SHALL BE SEALED
2. VENT AS REQUIRED
3. COMPLETE FINAL ASSEMBLY OF BOLTED ITEMS AFTER GALVANIZING. WIRE-BRUSH ALL CONTACTING SURFACES TO A DULL-GRAY APPEARANCE PRIOR TO ASSEMBLY

FB THIS DWG
56- 3/8 x 2 1/2 (A325 GALV) BOLT w/NNH

BILL OF MATERIAL

MARKS	SHIP	TEMP	QTY	MATERIAL	FT	IN	GR	REMARK'S
26BI			ONE	W30x116	21	0 3/4		CVN
aa26			1	L6x4x8	2	3		
ab26			1	L6x4x8	2	3		
ac26			1	L6x4x8	2	3		
ad26			1	L6x4x8	2	3		
ma26			22	SHEAR STUD 1/2"	0	6		
mb26			18	BOLT 3/8"	0	2 1/2	A325 GALV	w/NNH

MATL:

1. ALL MAT'L SHALL CONFORM TO AASHTO M 270/M 270 GRADE 50 (UNLESS NOTED)
2. 'CVN' INDICATES CHARNY 'V' NOTCH TESTED
3. 'FCM' INDICATES 'FRACTURE CRITICAL MEMBER'

WELD: E70xx

HOLES: 1/2" UNO

PREP: SSPC-SP8

PAINT: GALVANIZED AND AIR COOLED (NOT QUENCHED)
(SEE GALVANIZING NOTES)

3/11/09 PER APPL COMMENTS DATED 3/06/09

ARC ENTERPRISES, INC.
KINGFIELD, MAINE

PROJECT: STATE OF VERMONT - AGENCY OF TRANSPORTATION
BRIDGE No 31 - RICHMOND, VERMONT

SCALE: NTS APPROVED BY: DRAWN BY: KAJ

DATE: 2/18/09 CHKD. BY: DM05-082

BRIDGE # HIGHWAY #1 OVER WINOOSKI RIVER
FLOOR BEAM DETAILS

T BUCK CONSTRUCTION DWG NO 09-113 - 26