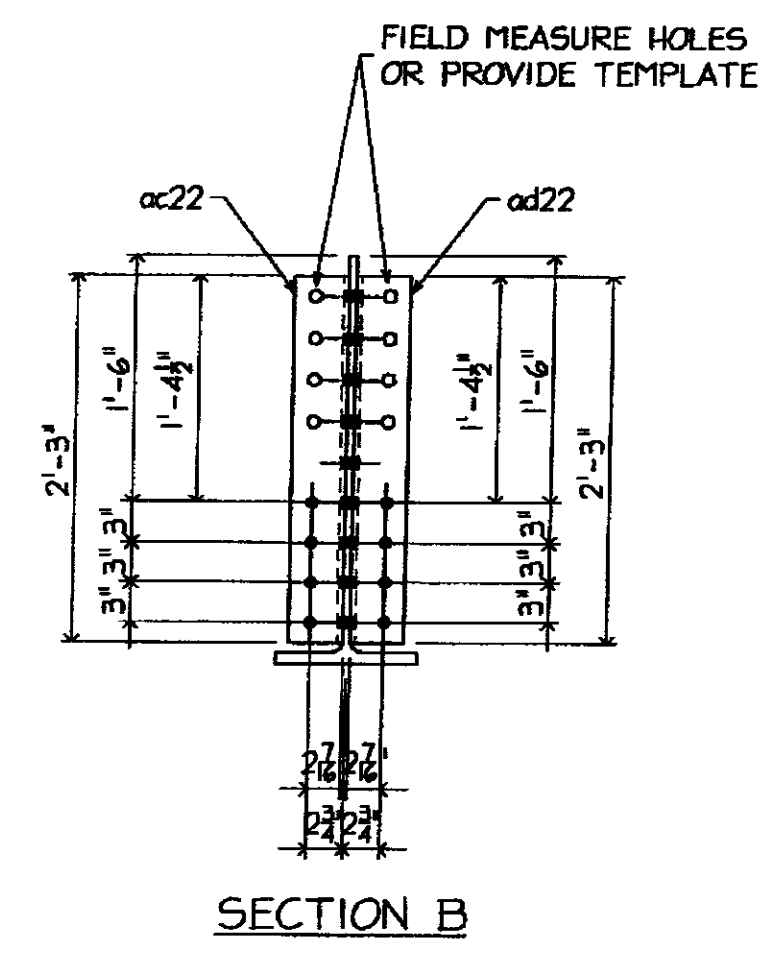
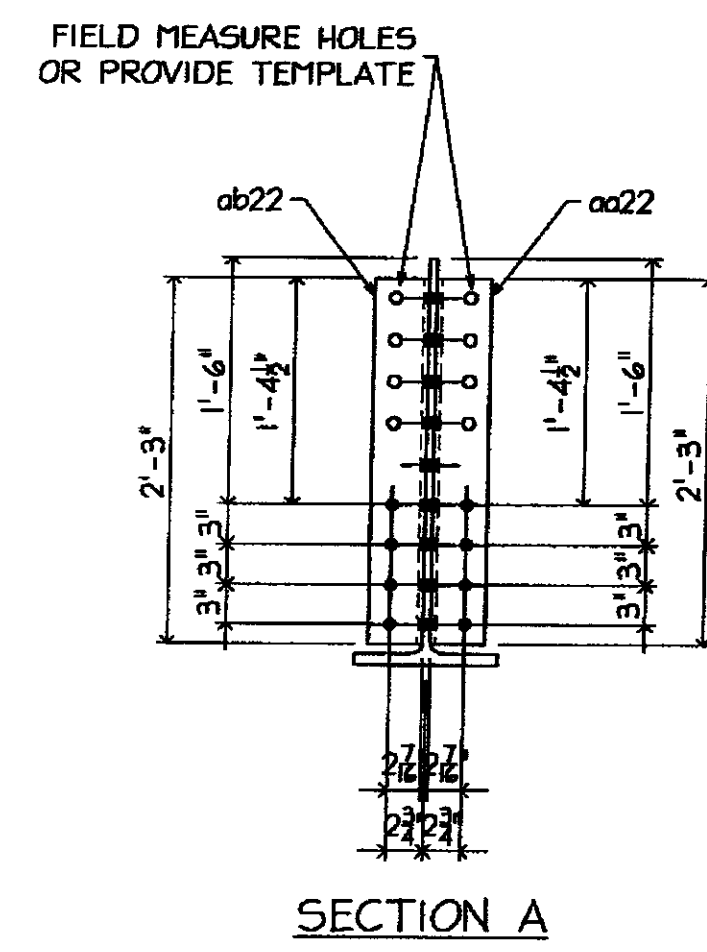


ONE - BEAM - 22BI 5/6/09



NO EXCEPTION TAKEN	<input checked="" type="checkbox"/>
REVISIONS NOT REQUIRED	<input type="checkbox"/>
REVISIONS NOT REQUIRED	<input type="checkbox"/>
REVISIONS NOT REQUIRED	<input type="checkbox"/>
REVISIONS NOT REQUIRED	<input type="checkbox"/>
REVISIONS NOT REQUIRED	<input type="checkbox"/>
DATE	3/24/09
DESIGNED BY	TCL

REVISION BY STANTEC IS FOR THE SOLE PURPOSE OF ASCERTAINING GENERAL CONFORMITY WITH DESIGN. CONTRACTOR IS RESPONSIBLE FOR DIMENSIONS, FABRICATION AND CONSTRUCTION METHODS, COORDINATION OF SUB-TRADES, DETAIL DESIGN OF COMPONENTS, AND ERRORS OR OMISSIONS ON SHOP DRAWINGS.

**GALVANIZING NOTES**  
 1. ALL WELDS SHALL BE SEALED  
 2. VENT AS REQUIRED  
 3. COMPLETE FINAL ASSEMBLY OF BOLTED ITEMS AFTER GALVANIZING WIRE-BRUSH ALL CONTACTING SURFACES TO A DULL-GRAY APPEARANCE PRIOR TO ASSEMBLY

FB THIS DWG  
 56- 3/8" x 2 1/2" (A325 GALV) BOLT w/NNW

**BILL OF MATERIAL**

MARKS	SHIP	TEMP	QTY	MATERIAL	FT	IN	GR	REMARK'S
22BI			ONE	W30x116	21	0 3/8		CVN
			1	L6x4x8	2	3		
			1	L6x4x8	2	3		
			1	L6x4x8	2	3		
			1	L6x4x8	2	3		
			22	SHEAR STUD 3/8"	0	6		
			16	BOLT 3/8"	0	2 1/2		A325 GALV w/NNW

- MAT'L:**  
 1. ALL MAT'L SHALL CONFORM TO AASHTO M 270/M 1 270 GRADE 50 (UNLESS NOTED)  
 2. 'CVN' INDICATES CHARPY 'V' NOTCH TESTED  
 3. 'FCM' INDICATES 'FRACTURE CRITICAL MEMBER'

**WELD:** E70xx  
**HOLES:** 1/8" UNO  
**PREP:** SSPC-SP8  
**PAINT:** GALVANIZED AND AIR COOLED (NOT QUENCHED) (SEE GALVANIZING NOTES)

3/11/09 PER APP'L COMMENTS DATED 3/06/09

**ARC ENTERPRISES, INC.**  
 KINGFIELD, MAINE

PROJECT STATE OF VERMONT - AGENCY OF TRANSPORTATION  
 BRIDGE No 31 - RICHMOND, VERMONT

SCALE: NTS APPROVED BY: DRAWN BY: KAJ  
 DATE: 2/18/09 CHKD BY: CMS-DB2

BRIDGE @ HIGHWAY #1 OVER WINOOSKI RIVER  
 FLOOR BEAM DETAILS

T BUCK CONSTRUCTION DWG NO 09-113 - 22