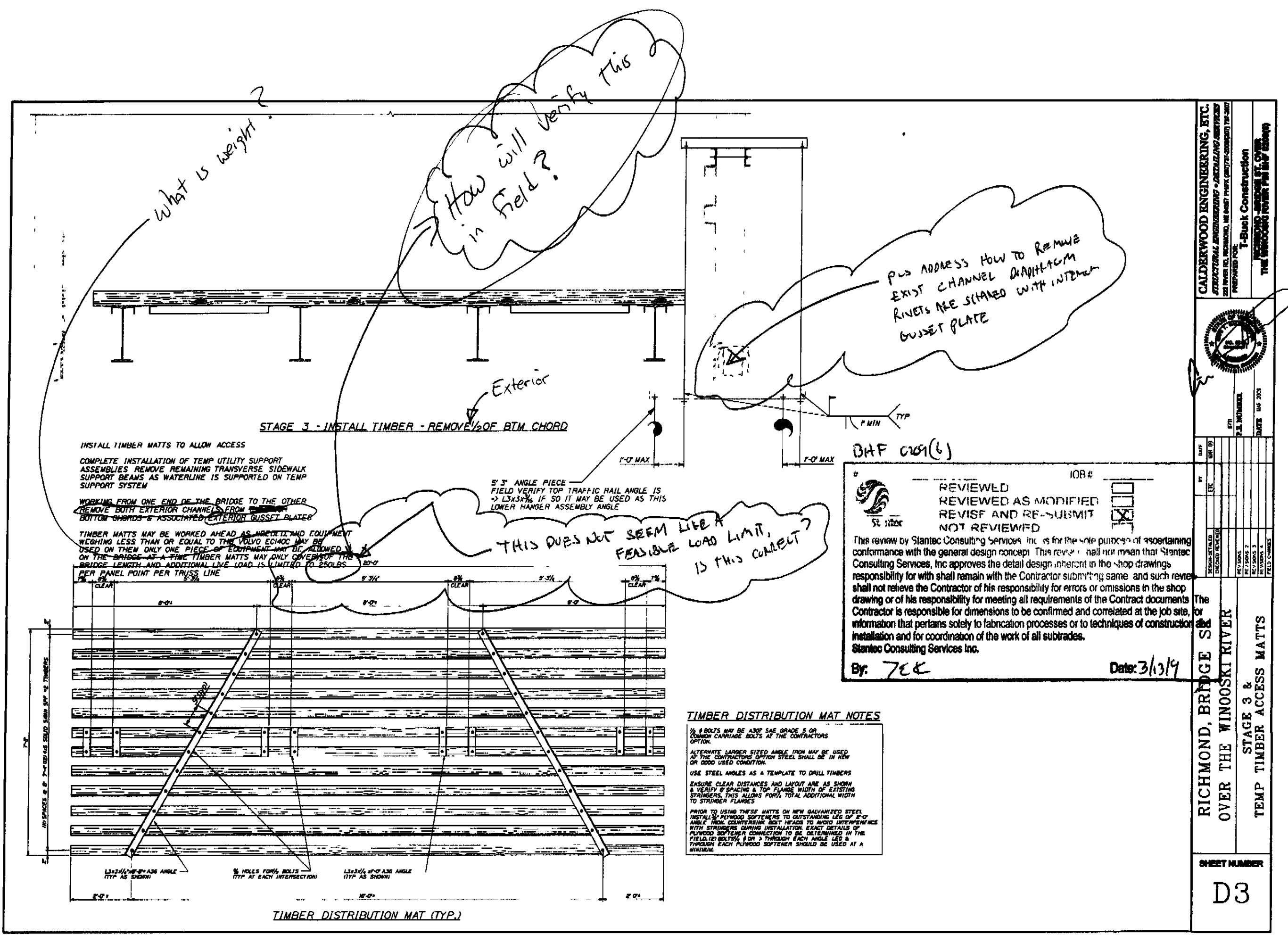


1/2" = 1'-0" DATE: 3/13/09



INSTALL TIMBER MATS TO ALLOW ACCESS  
 COMPLETE INSTALLATION OF TEMP UTILITY SUPPORT  
 ASSEMBLIES REMOVE REMAINING TRANSVERSE SIDEWALK  
 SUPPORT BEAMS AS WATERLINE IS SUPPORTED ON TEMP  
 SUPPORT SYSTEM

WORKING FROM ONE END OF THE BRIDGE TO THE OTHER  
 REMOVE EXIST CHANNEL DRAINAGE  
 RIVETS ARE SHOWN WITH INTERIOR  
 GUSSET PLATE

TIMBER MATS MAY BE WORKED AHEAD AS SUPPORT AND EQUIPMENT  
 BEING LESS THAN OR EQUAL TO THE CRUISE LENGTH MAY BE  
 USED IN THEM ONLY ONE INTERIOR BRIDGE MATS MAY BE USED  
 BRIDGE LENGTH AND ADDITIONAL LOAD IS LIMITED BY BRIDGE  
 PER PANEL POINT PER TRUSS LINE

5' 3' ANGLE PIECE  
 FIELD VERIFY TOP TRACKING RAIL ANGLE IS  
 IN LINE, IF SO IT MAY BE USED AS THIS  
 LOWER HANGER ASSEMBLY ANGLE

REVIEWED  
 REVIEWED AS MODIFIED  
 NOT REVIEWED  
 REVIS AND RE-SUBMIT  
 NOT REVIEWED

This review by Stantec Consulting Services, Inc. is for the sole purpose of coordinating  
 conformance with the general design concept. This review shall not mean that Stantec  
 Consulting Services, Inc. approves the detail design inherent in the shop drawings.  
 responsibility for which shall remain with the Contractor submitting same, and such review  
 shall not relieve the Contractor of his responsibility for errors or omissions in the shop  
 drawing or of his responsibility for meeting all requirements of the Contract documents.  
 Contractor is responsible for dimensions to be confirmed and correlated at the job site,  
 information that pertains solely to fabrication processes or to techniques of construction.  
 Stantec Consulting Services Inc.

By: JEC Date: 3/13/09

**TIMBER DISTRIBUTION MAT NOTES**

1. MATS MAY BE USED UP TO 10' LONG  
 LONGER MATS MUST BE USED IN PAIRS  
 2. MATS MUST BE USED WITH 4" X 4" POSTS  
 3. MATS MUST BE USED WITH 4" X 4" POSTS  
 4. MATS MUST BE USED WITH 4" X 4" POSTS  
 5. MATS MUST BE USED WITH 4" X 4" POSTS  
 6. MATS MUST BE USED WITH 4" X 4" POSTS  
 7. MATS MUST BE USED WITH 4" X 4" POSTS  
 8. MATS MUST BE USED WITH 4" X 4" POSTS  
 9. MATS MUST BE USED WITH 4" X 4" POSTS  
 10. MATS MUST BE USED WITH 4" X 4" POSTS

CALDWELL ENGINEERING, ETC.  
 ARCHITECTURAL ENGINEERING - LANDSCAPE ARCHITECTURE  
 1000 WEST 10TH AVENUE, SUITE 200  
 DENVER, CO 80202  
 TEL: 303.733.1100 FAX: 303.733.1101  
 WWW.CALDWELL-ENG.COM

RICHMOND BRIDGE  
 OVER THE WINDSOR RIVER  
 TEMP TIMBER ACCESS MATS

SHEET NUMBER  
 D3