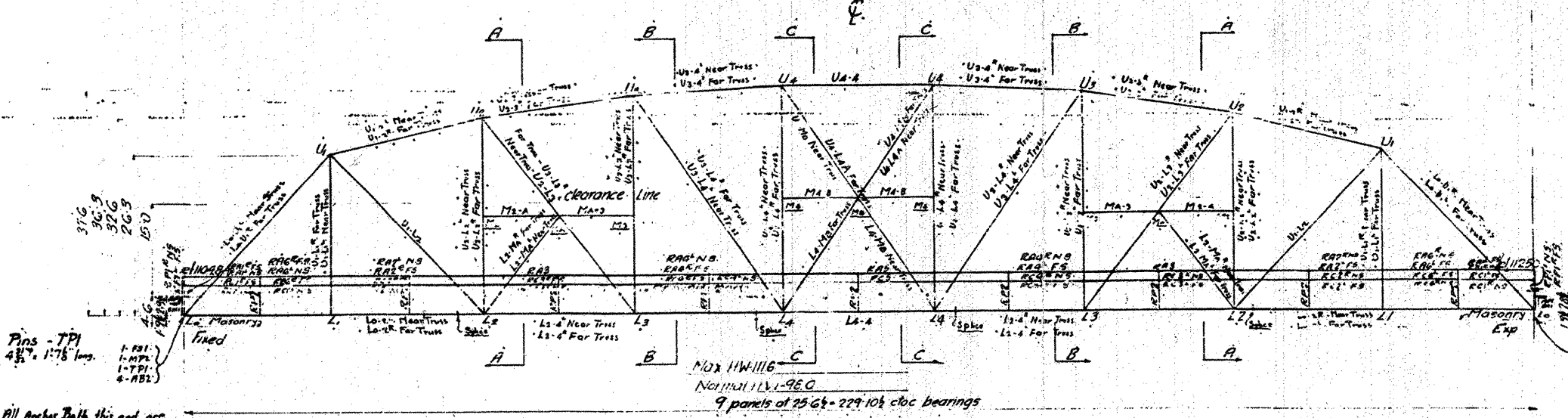
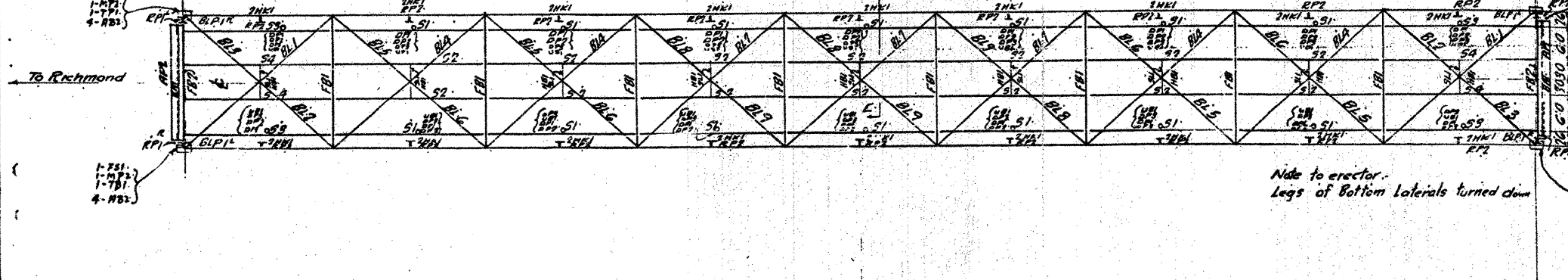


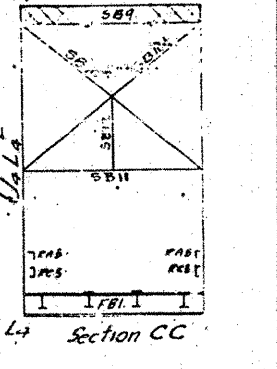
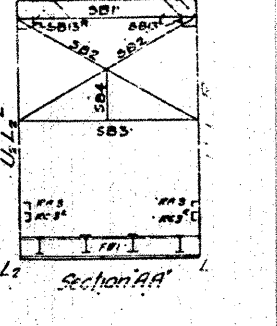
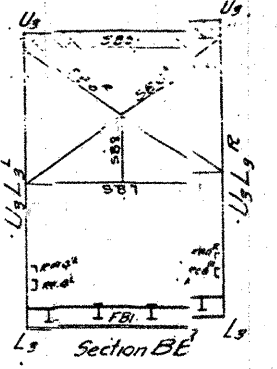
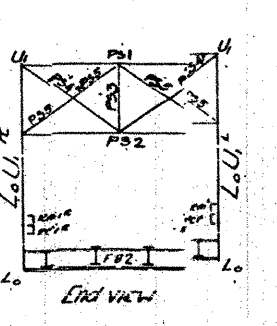
Note to Erector:  
Erect all lateral girders  
with L-backs up first.



Note to Erector:  
Lays of bottom chords turned down



Center Diagram Bottom Chord  
(before application of steel deck)



LIST OF MATERIALS

1	Diagonal members
2	Top End
3	Truss end
4	Truss center
5	Truss bottom
6	Truss deck
7	Truss floor
8	Truss roof
9	Truss wall
10	Truss base

**BETHLEHEM STEEL**

For Reference Only  
Richmond 24120915  
Sheet 19 of 50

REVISIONS

NO.	DATE	BY	REVISION
1			
2			
3			
4			
5			
6			
7			
8			
9			
10			

PLATE 1363