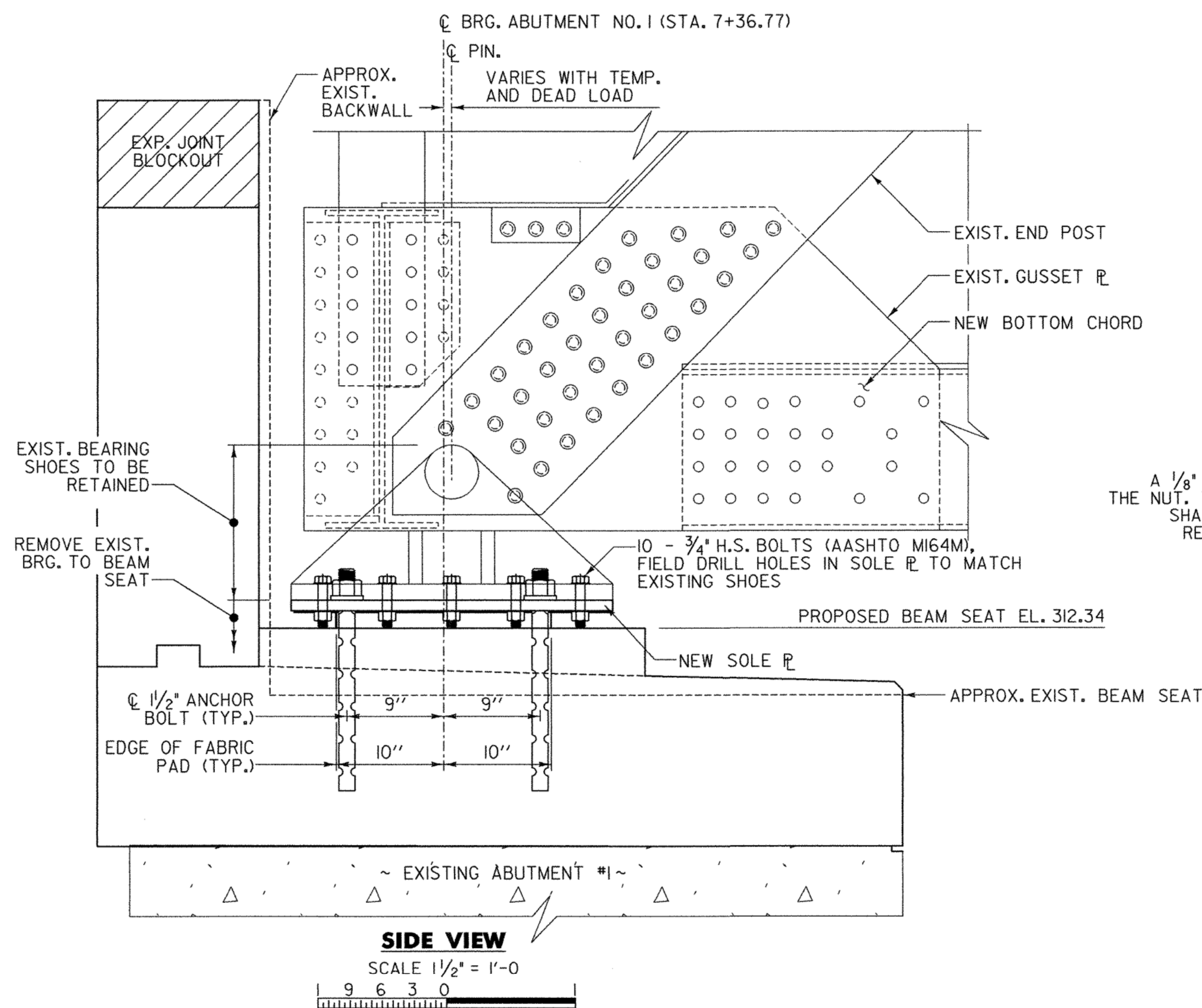
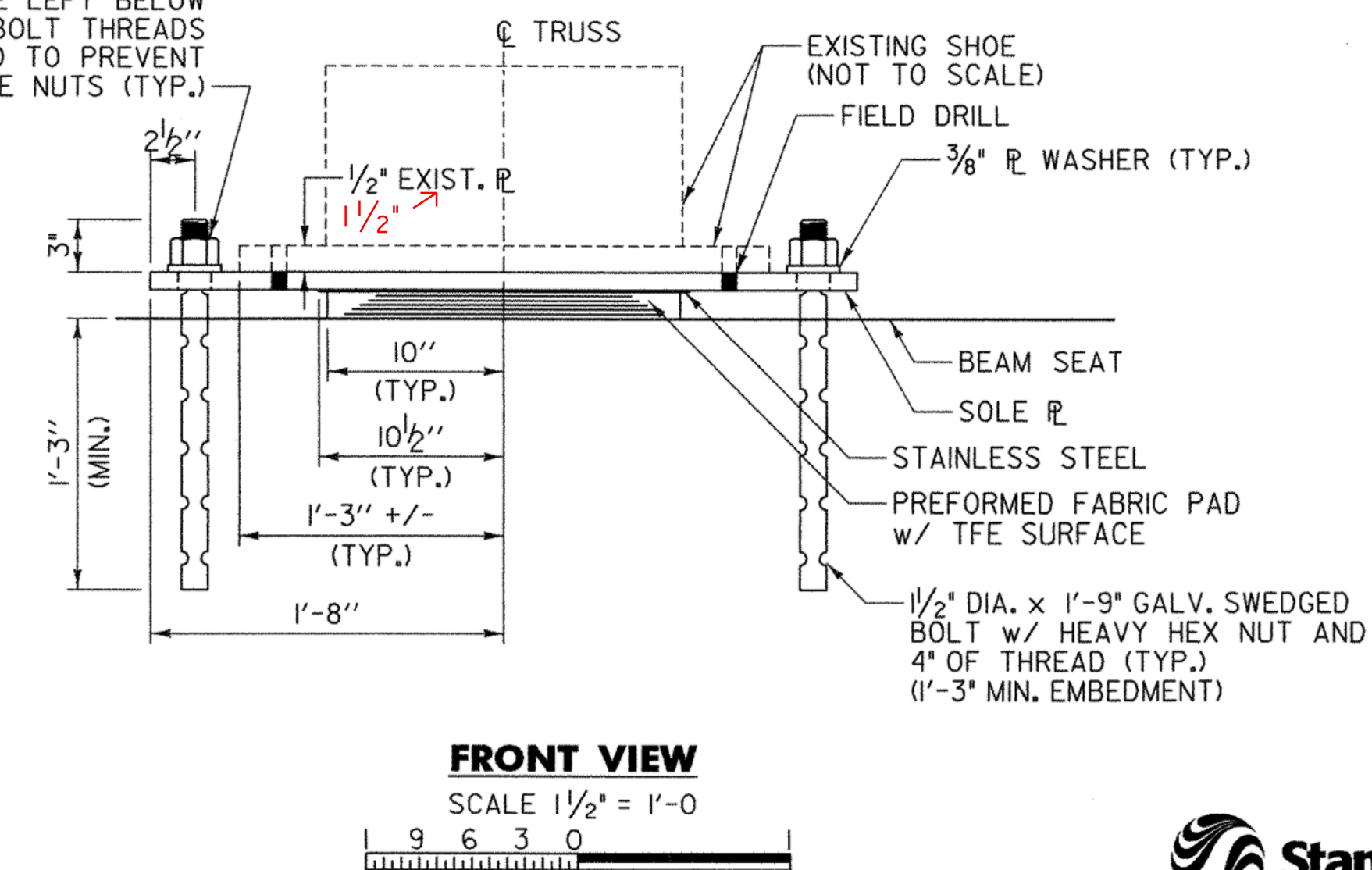


BEARING NOTES:

1. INSTALL BEARINGS IN ACCORDANCE WITH SECTION 531 AND 731 OF VAOT STANDARD SPECIFICATIONS AS MODIFIED BY SPECIAL PROVISION 900.620, "SPECIAL PROVISION (INSTALL BEARING DEVICE ASSEMBLY)".
2. THE CONCRETE SURFACE UNDER THE BEARING DEVICE SHALL BE LEVEL.
3. ANCHOR BOLTS SHALL HAVE A MINIMUM OF 1'-3" EMBEDMENT INTO THE CONCRETE.
4. AREAS OF DAMAGED GALVANIZING SHALL BE REPAIRED IN ACCORDANCE WITH SECTION 513. AREAS OF DAMAGED METALIZING SHALL BE REPAIRED WITH THE SAME SEALANT USED BY THE BEARING SUPPLIER.
5. EXISTING BEARING PIN SHALL BE MADE FREE AND GREASED AND SHOE TO BE SET PLUMB PRIOR TO PLACING NEW BEARINGS, COST INCLUDED IN ITEM 900.620, "SPECIAL PROVISION (INSTALL BEARING DEVICE ASSEMBLY)".
6. PORTIONS OF EXISTING BEARING TO REMAIN SHALL BE CLEANED AND PRIMED. FOLLOWING INSTALLATION OF THE BEARING COMPONENTS, ALL STEEL COMPONENTS EXCEPT STAINLESS SHALL BE GREASED. ALL IN ACCORDANCE WITH SECTION 513 OF THE STANDARD SPECIFICATIONS, COST INCIDENTAL TO ITEM 900.620, "SPECIAL PROVISION (INSTALL BEARING DEVICE ASSEMBLY)".
7. PAYMENT FOR ANCHOR BOLTS, NUTS, WASHERS AND THEIR INSTALLATIONS SHALL BE INCIDENTAL TO ITEM 900.620, "SPECIAL PROVISION (INSTALL BEARING DEVICE ASSEMBLY)".



A 1/8" GAP SHALL BE LEFT BELOW THE NUT. THE ANCHOR BOLT THREADS SHALL BE BURRED TO PREVENT REMOVAL OF THE NUTS (TYP.)



STATE OF VERMONT AGENCY OF TRANSPORTATION	
Town Of	RICHMOND
Bridge No.	31
Highway No.	T.H. #1
Log Sta.	
Surv. Sta.	
TOWN HIGHWAY #1 OVER WINOOSKI RIVER	
ABUTMENT No. 1 BEARING DETAILS	
Designed By	T. KNIGHT
Drawn By	J. SÖTER
Checked By	Date
T. KNIGHT	01/09
Bridge Design Supervisor	
G. BOGUE	Date 01/09
PROJECT	RICHMOND
PROJECT NO.	BHF 0209(5)
CAD Dwg: ...drawing\z08JJ32-brgs.dgn	Plot Date: 1/8/2009
Bridge Sheet No.	Sheet 36 of 50

