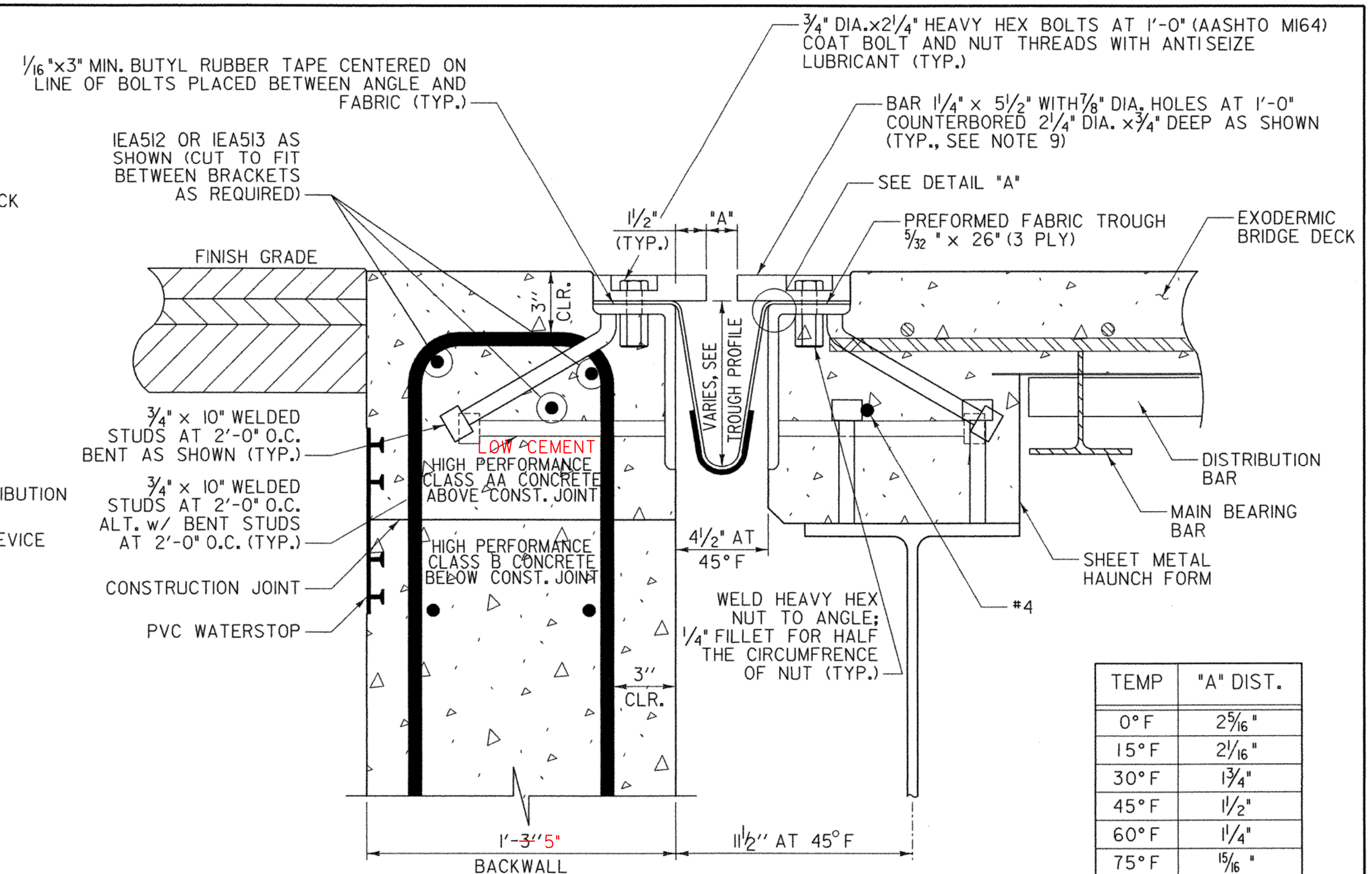
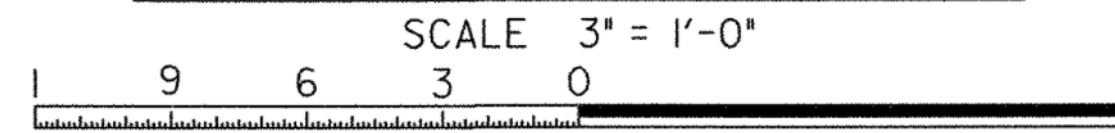
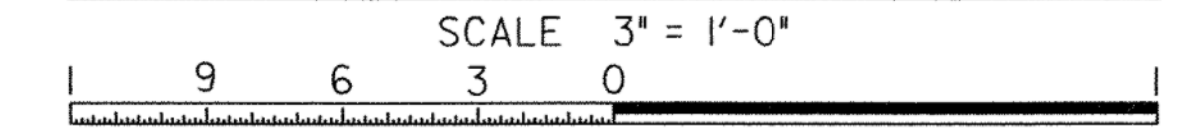


TYPICAL SECTION AT BRACKETS



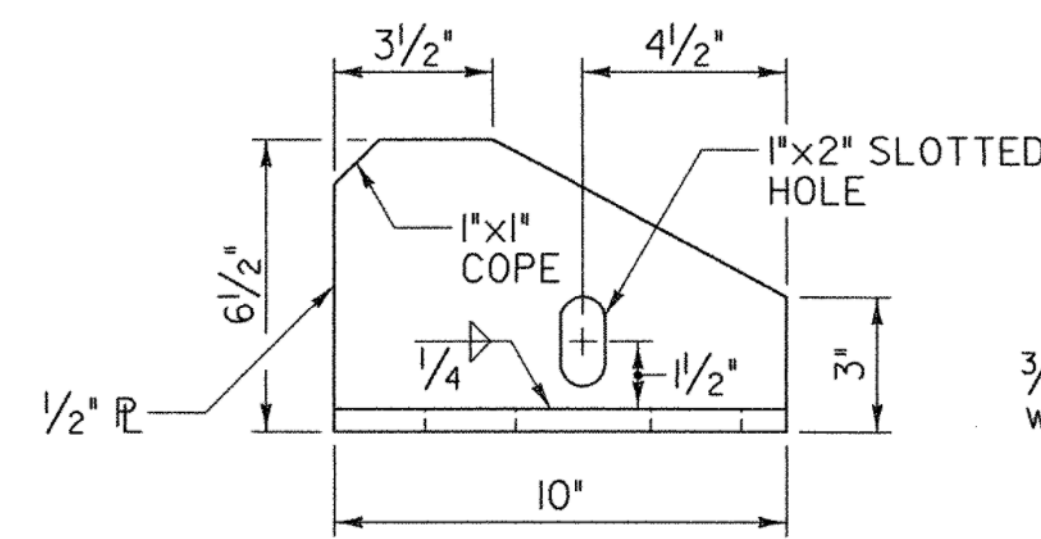
TYPICAL SECTION BETWEEN BRACKETS



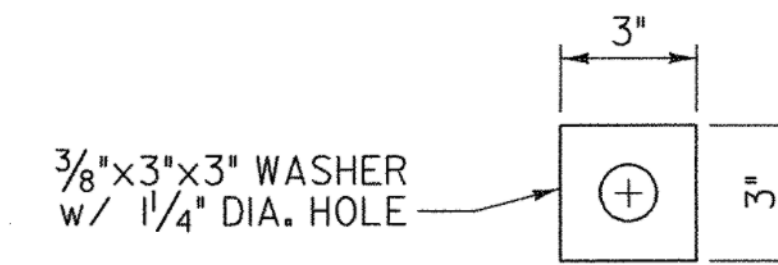
TEMP	"A" DIST.
0° F	2 ⁵ / ₁₆ "
15° F	2 ¹ / ₁₆ "
30° F	1 ³ / ₄ "
45° F	1 ¹ / ₂ "
60° F	1 ¹ / ₄ "
75° F	1 ⁵ / ₁₆ "
90° F	1 ¹ / ₁₆ "
105° F	7 ¹ / ₁₆ "

NOTES:

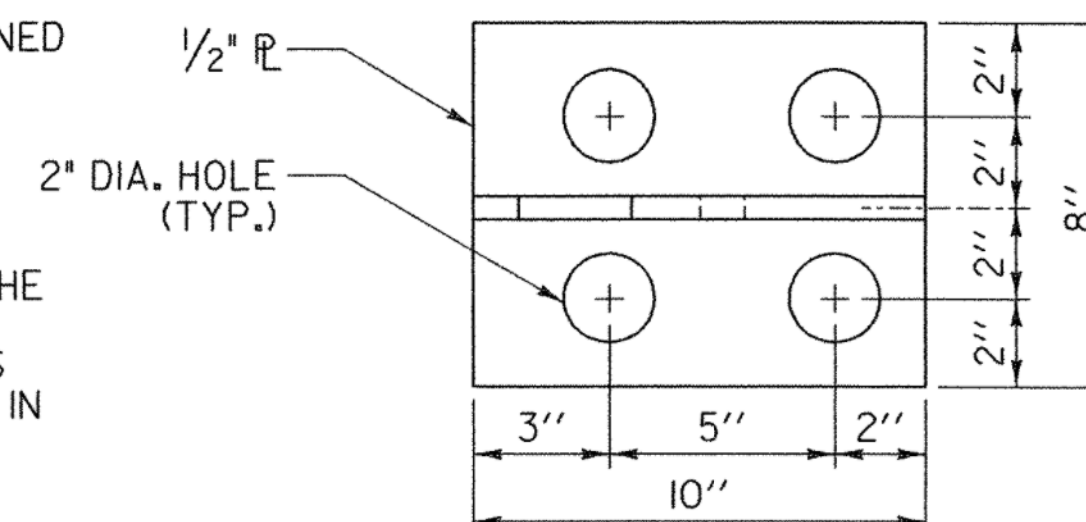
1. DETAILS ON SHEETS 33 AND 34 ARE FOR ITEM 516. II, "BRIDGE EXPANSION JOINT, VERMONT".
2. THE PREFORMED FABRIC MATERIAL SHALL BE CONTINUOUS AND SHALL CONFORM TO SUBSECTION 707.07.
3. BUTYL RUBBER TAPE SHALL CONFORM TO SUBSECTION 707.12.
4. THE FINAL FINISH OF THE EXPANSION DEVICE SHALL BE COVERED DURING THE PLACING OF BRIDGE DECK CONCRETE.
5. ALL STEEL COMPONENTS SHALL BE AASHTO M 270 GRADE 36 GALVANIZED OR METALIZED AS PER SUBSECTION 506.15, UNLESS OTHERWISE SPECIFIED. THREADED RODS SHALL CONFORM TO ASTM A307, GRADE C. THE NUTS FOR THE THREADED RODS SHALL BE ASTM A563.
6. THE ITEM 516.II, "BRIDGE EXPANSION JOINT, VERMONT" SHALL INCLUDE THE FABRICATION AND ERECTION OF THE COMPLETE JOINT ASSEMBLY INCLUDING ALL STEEL PLATES, BRACKETS, ANGLES, WELDED STUDS OR RODS, PREFORMED FABRIC DRAIN TROUGH MATERIAL, BUTYL RUBBER TAPE AND ANY OTHER MISCELLANEOUS MATERIAL NECESSARY TO INSTALL JOINT.
7. THE 8"x4"x¹/₂" ANGLES SHALL BE FURNISHED AS ONE CONTINUOUS PIECE. THE 1¹/₄" X 5¹/₂" BARS EACH SIDE OF THE JOINT SHALL BE PROVIDED IN FOUR EQUAL LENGTHS.
8. COAT CONCRETE CONTACT SURFACES WITH EPOXY BONDING COMPOUND. PAYMENT SHALL BE INCLUDED IN THE UNIT PRICE BID FOR ITEM 516. II "BRIDGE EXPANSION JOINT, VERMONT".
9. FILL COUNTER BORED HOLES WITH HOT POURED JOINT SEALER AFTER BOLT INSTALLATION. PAYMENT FOR THE WORK SHALL BE INCIDENTAL TO ITEM 516. II.
10. PAYMENT FOR WATERSTOP SHALL BE INCIDENTAL TO CONTRACT ITEM 501.34.
11. A DRIP BEAD OF 1¹/₄" X 7" STRIP OF PREFORMED MATERIAL SHALL BE CEMENTED TO THE BOTTOM OF THE FABRIC TROUGH USING AN ADHESIVE APPROVED BY THE MANUFACTURER. THE DRIP BEAD SHALL BE APPLIED 1" FROM THE DOWNSPOUT END OF THE TROUGH.
12. FABRIC TROUGH SHALL BE THOROUGHLY CLEANED AND FLUSHED AFTER PAVING OPERATION
13. THE EXPANSION JOINT SHALL BE SHOP ASSEMBLED AND SHIPPED AS ONE UNIT.
14. PROJECTING THREADS OF THE 3⁴/₄" BOLTS IN THE JOINT SHALL BE GREASED BY CONTRACTOR PRIOR TO PLACING ADJACENT CONCRETE. THIS WILL FACILITATE BOLT REMOVAL IF REQUIRED IN THE FUTURE.
15. ALL EXPOSED CUT OR SHEARED EDGES SHALL BE ROUNDED TO A 1¹/₁₆" RADIUS AND BE FREE OF BURRS PRIOR TO GALVANIZING.



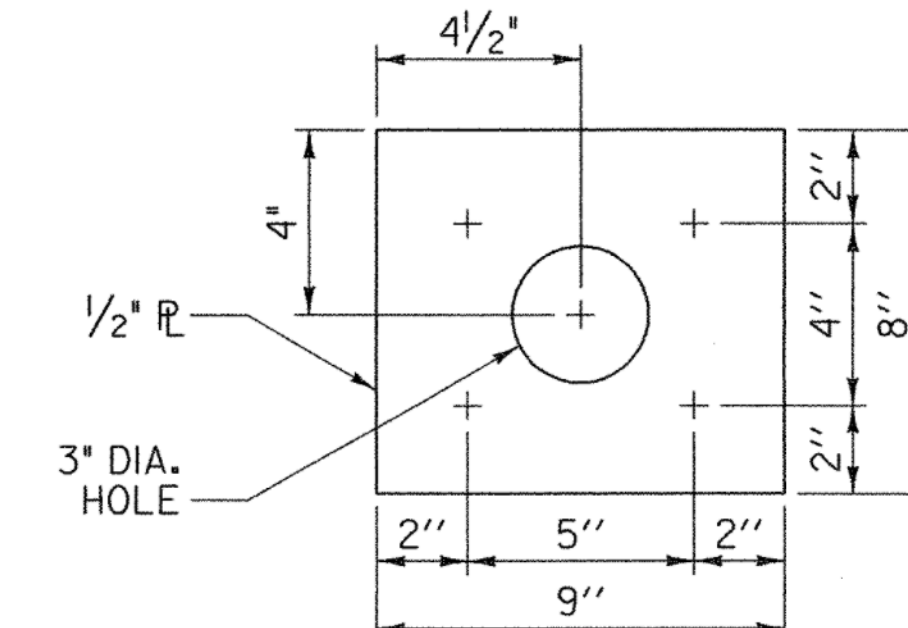
BRACKET ELEVATION



WASHER FOR BRACKET

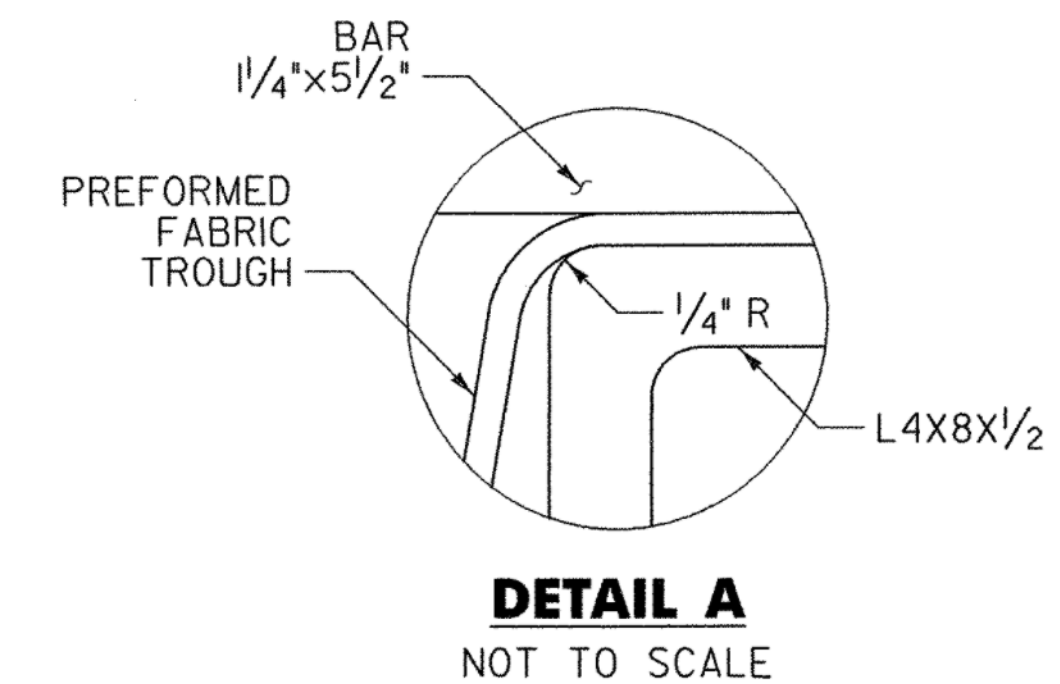
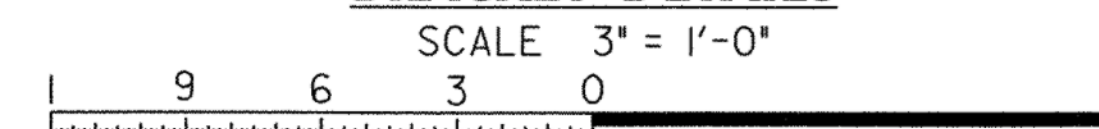


BRACKET PLAN



WASHER FOR BRACKET

BRACKET DETAILS



DETAIL A
NOT TO SCALE

STATE OF VERMONT
AGENCY OF TRANSPORTATION

Town Of	RICHMOND	Bridge No.	31
Highway No.	T.H. #1	Log Sta.	
		Surv. Sta.	

TOWN HIGHWAY #1 OVER WINOOSKI RIVER

EXPANSION JOINT DETAILS

Designed By	G. BOGUE	Drawn By	J. SOTER
Checked By	G. BOGUE	Date	01/09
		Bridge Design Supervisor	G. BOGUE
		Date	01/09

PROJECT	RICHMOND	PROJECT NO.	BHF 0209(5)
---------	----------	-------------	-------------

CAD Dwg: ...z08j32_EXPJT_DET5_EXODERM.dgn Plot Date: 1/9/2009
Bridge Sheet No. Sheet 34 of 50

