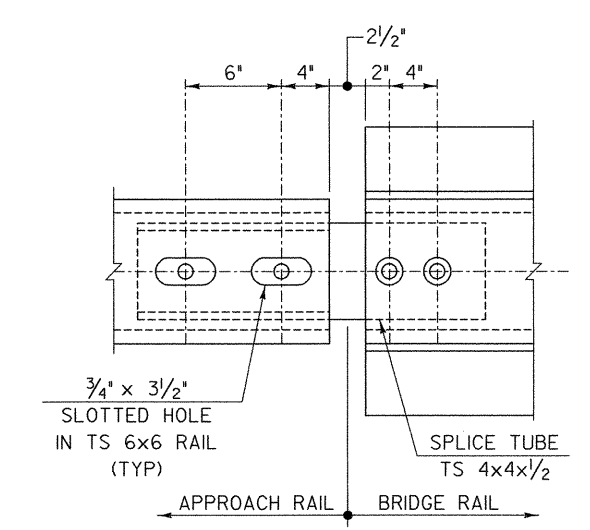
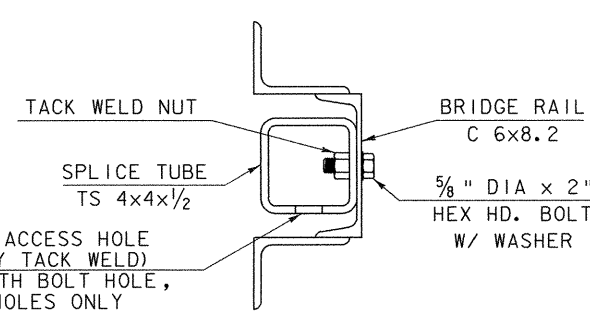


SPLICE TUBE DETAIL
NOT TO SCALE

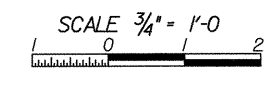


RAIL SPLICE DETAIL
NOT TO SCALE

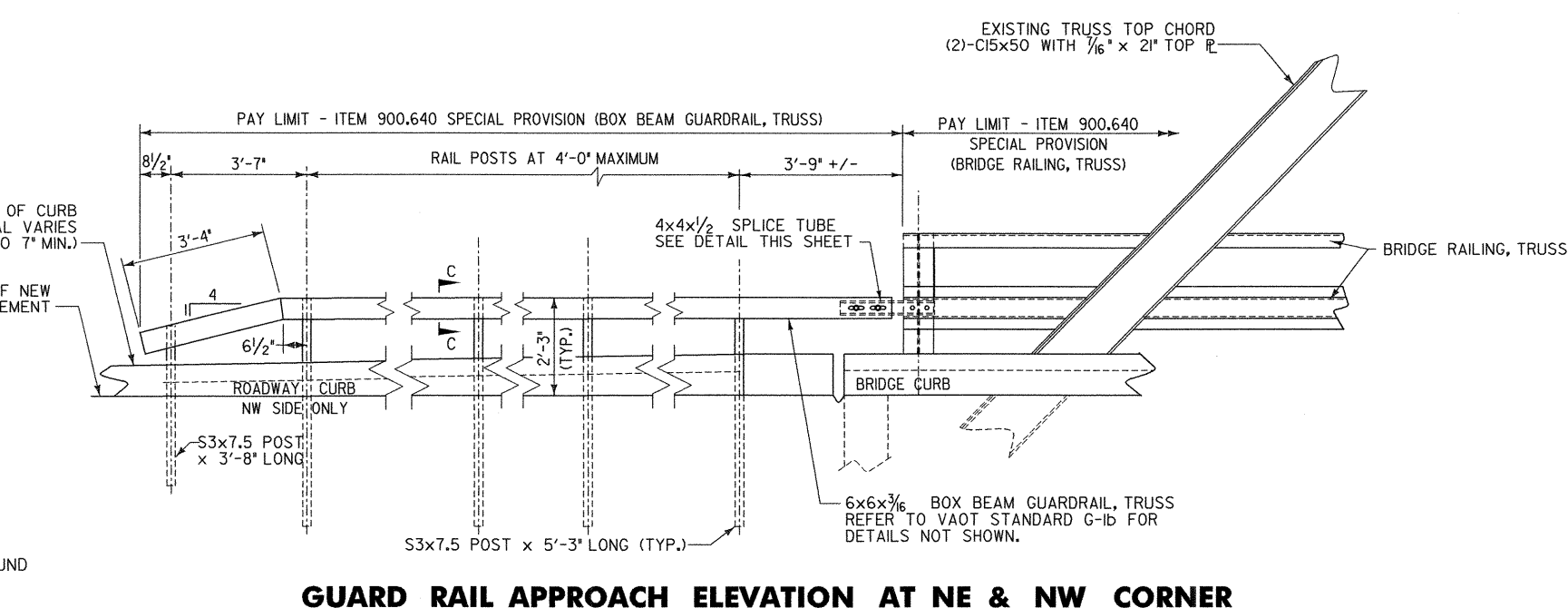


RAIL SPLICE SECTION
NOT TO SCALE

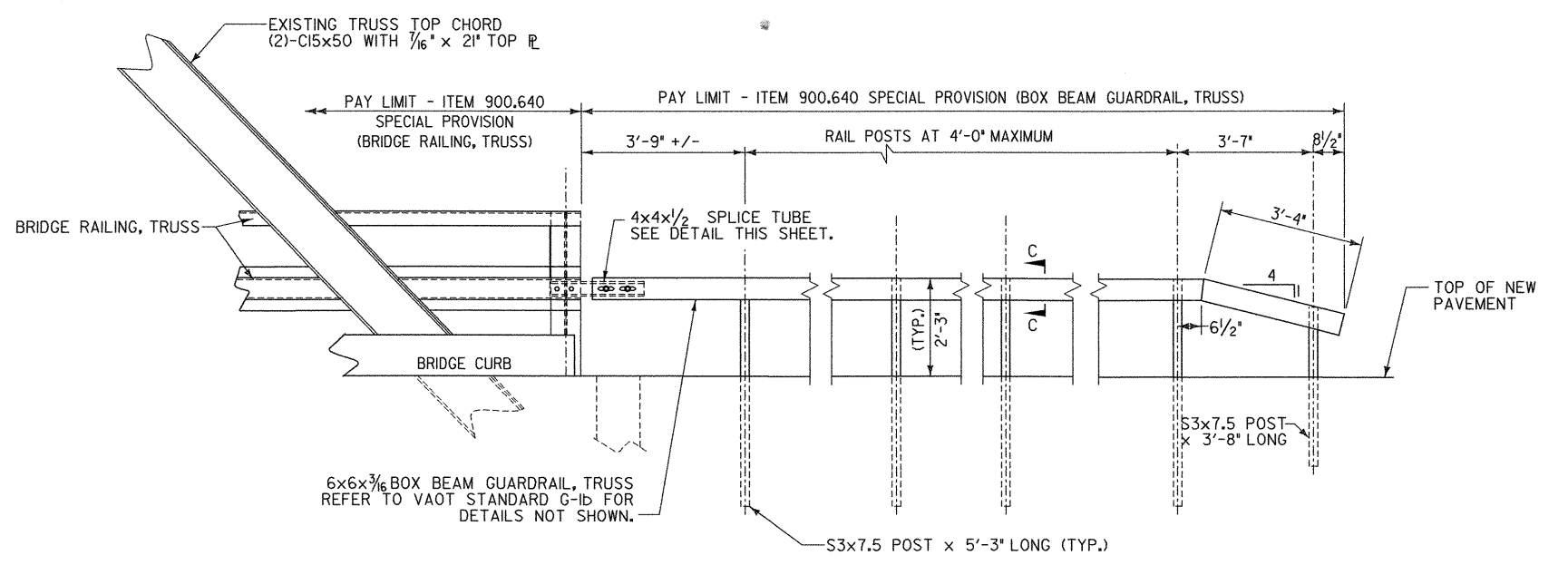
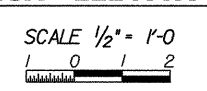
SECTION C-C



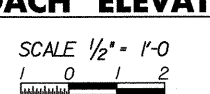
SCALE 3/4" = 1'-0"



GUARD RAIL APPROACH ELEVATION AT NE & NW CORNER



GUARD RAIL APPROACH ELEVATION AT SE CORNER



- APPROACH RAIL NOTES**
1. ALL WORK AND MATERIALS SHALL CONFORM TO SECTIONS 525 AND 62 OF THE STANDARD SPECIFICATIONS.
 2. TUBING SHALL MEET THE REQUIREMENTS OF SUBSECTION 732.03. ALL OTHER SHAPES AND PLATES SHALL BE AASHTO M 270/M M 270 GRADE 36.
 3. ALL EXPOSED CUT OR SHEARED EDGES SHALL BE ROUNDED TO A 1/8\"/>

STATE OF VERMONT			
AGENCY OF TRANSPORTATION			
Town Of	RICHMOND	Bridge No.	31
Highway No.	T.R. #1	Log Sta.	527+57.5
TOWN HIGHWAY #1 OVER WINDSOCKI RIVER			
APPROACH RAIL DETAILS			
Designed By	T. KNIGHT	Drawn By	J. SOTER
Checked By	Date	Bridge Design Supervisor	Date
T. KNIGHT	01/09	G. BOSQUE	01/09
PROJECT	RICHMOND	PROJECT NO.	BHF 0209(S)
CAD	Drawn by: vrdrawing\208332.AppRoll.dgn	Plot Date	1/8/2009
Bridge Sheet No.		Sheet	32 of 50

