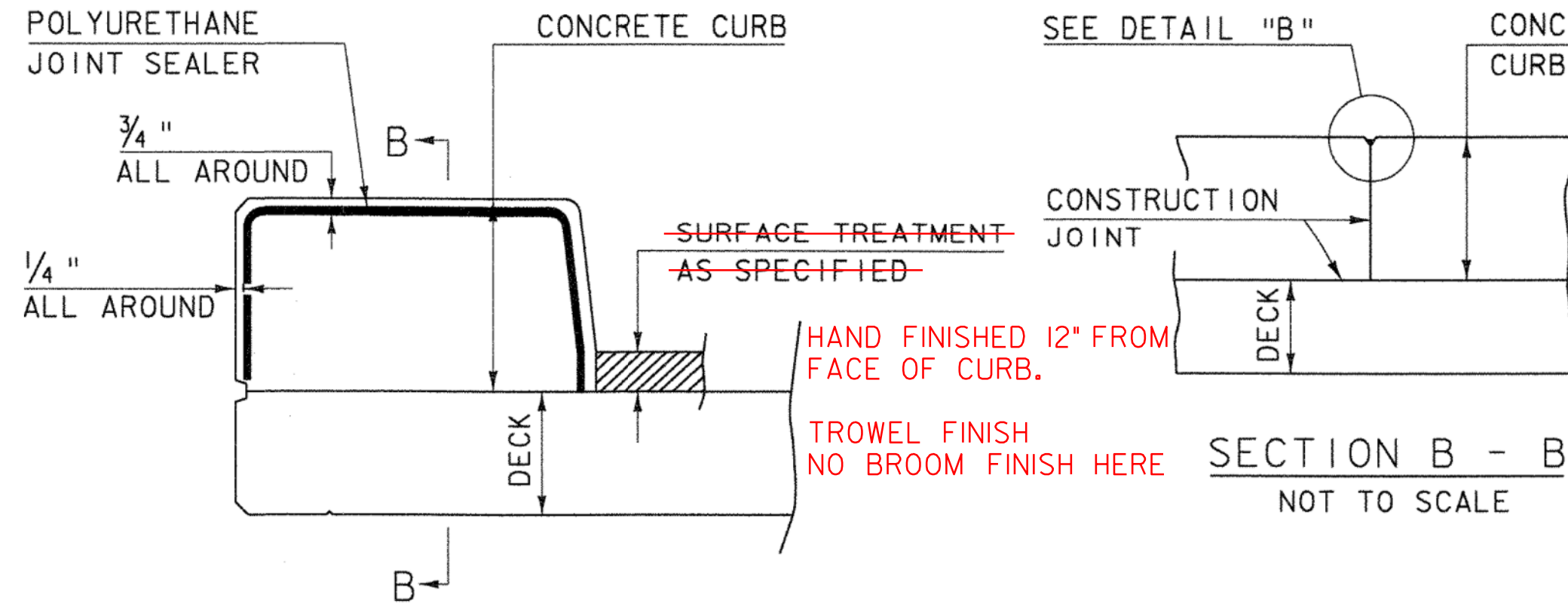


POLYURETHANE JOINT SEALER MEETING THE REQUIREMENTS OF SECTION 524. COLOR TO MATCH CONCRETE. PAYMENT TO BE INCIDENTAL TO THE BRIDGE CURB CONCRETE ITEM

ADHERE TO THESE SURFACES

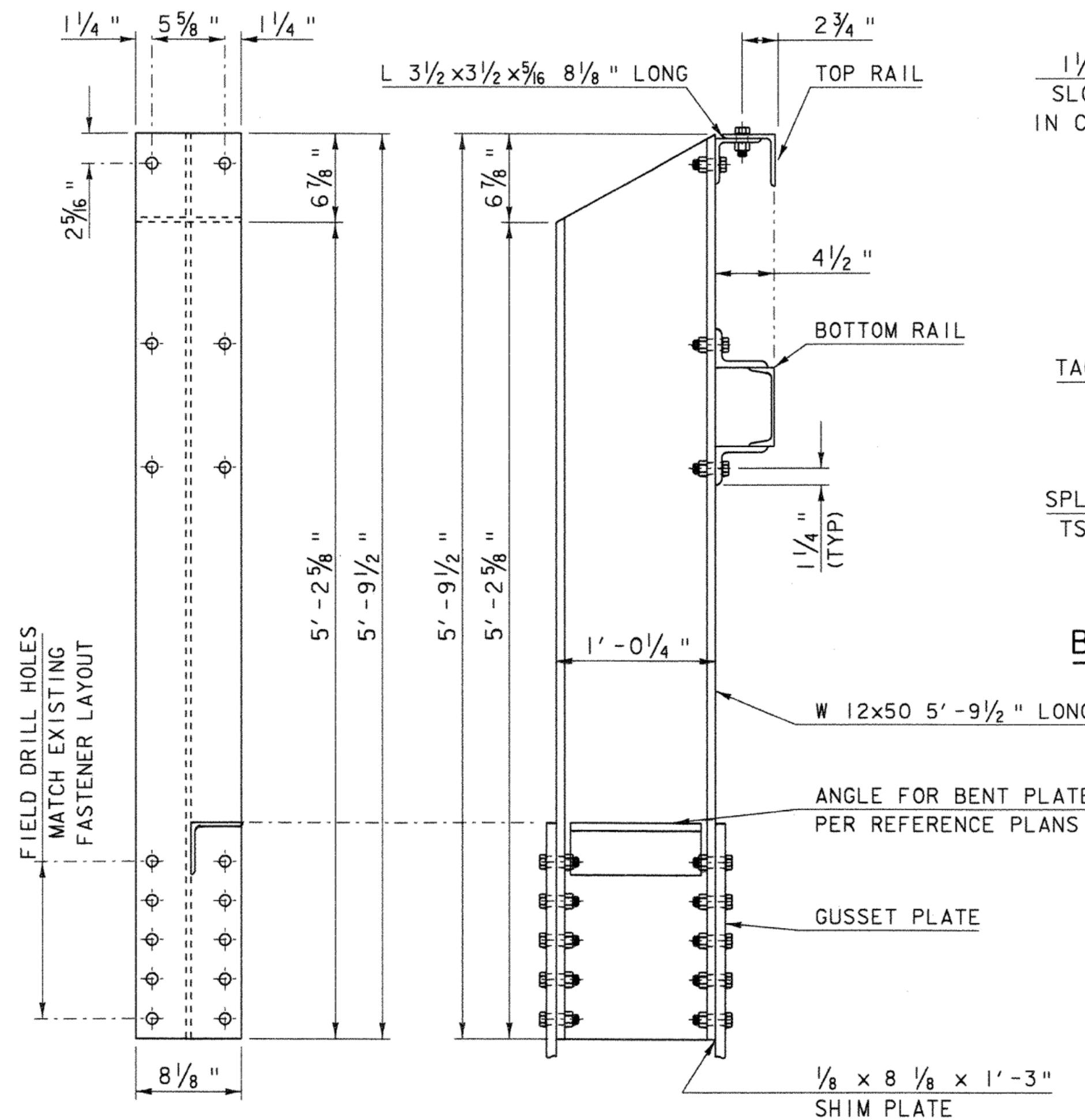
DETAIL "B"
NOT TO SCALE



CONCRETE CURB JOINT SECTION
NOT TO SCALE

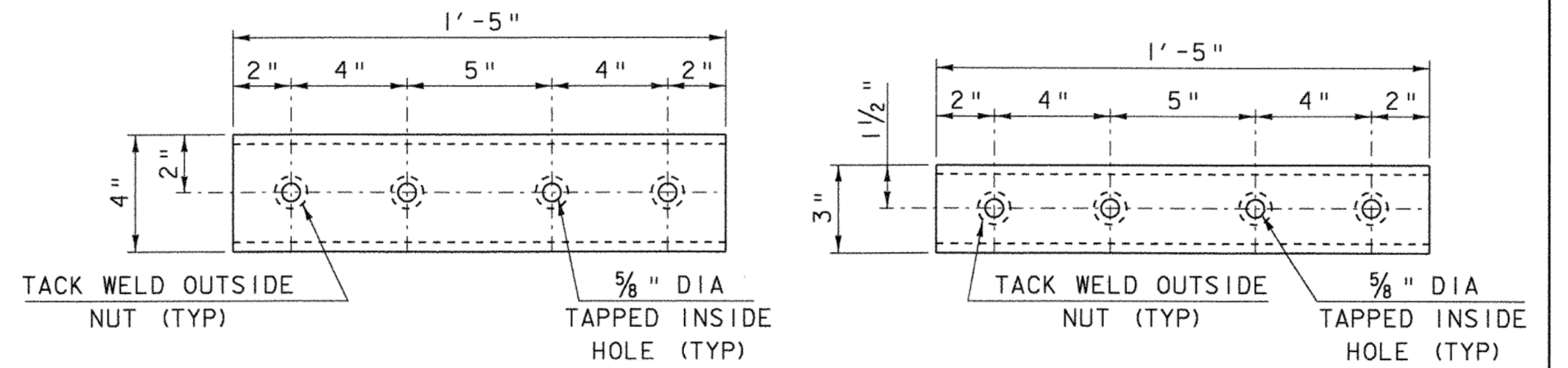
CONCRETE CURB JOINT NOTES

1. CONCRETE CURBS MAY BE PLACED IN ONE CONTINUOUS OPERATION, IF AN APPROVED SHRINKAGE REDUCING ADMIXTURE LISTED IN THE SPECIAL PROVISIONS IS USED WITH THE CONCRETE MIX DESIGN. PAYMENT FOR THE SHRINKAGE REDUCING ADMIXTURE WILL BE INCIDENTAL TO THE BRIDGE CURB CONCRETE ITEM.
2. IF THE CONTRACTOR CHOOSES NOT TO USE AN APPROVED SHRINKAGE REDUCING ADMIXTURE, THE CURBS SHALL BE CONSTRUCTED WITH CONSTRUCTION JOINTS SPACED AT A MAXIMUM OF 15'-0" CENTER TO CENTER AND 2'-0" MINIMUM FROM THE CENTER OF NEAREST BRIDGE RAILING POST.
3. WHEN CURB JOINTS ARE USED THE CURBS SHALL BE PLACED IN ALTERNATE SECTIONS WITH A MINIMUM OF 48 HOUR DELAY BETWEEN ADJACENT PLACEMENTS.
4. LONGITUDINAL REINFORCING SHALL BE CONTINUOUS THROUGH CURB CONSTRUCTION JOINTS.

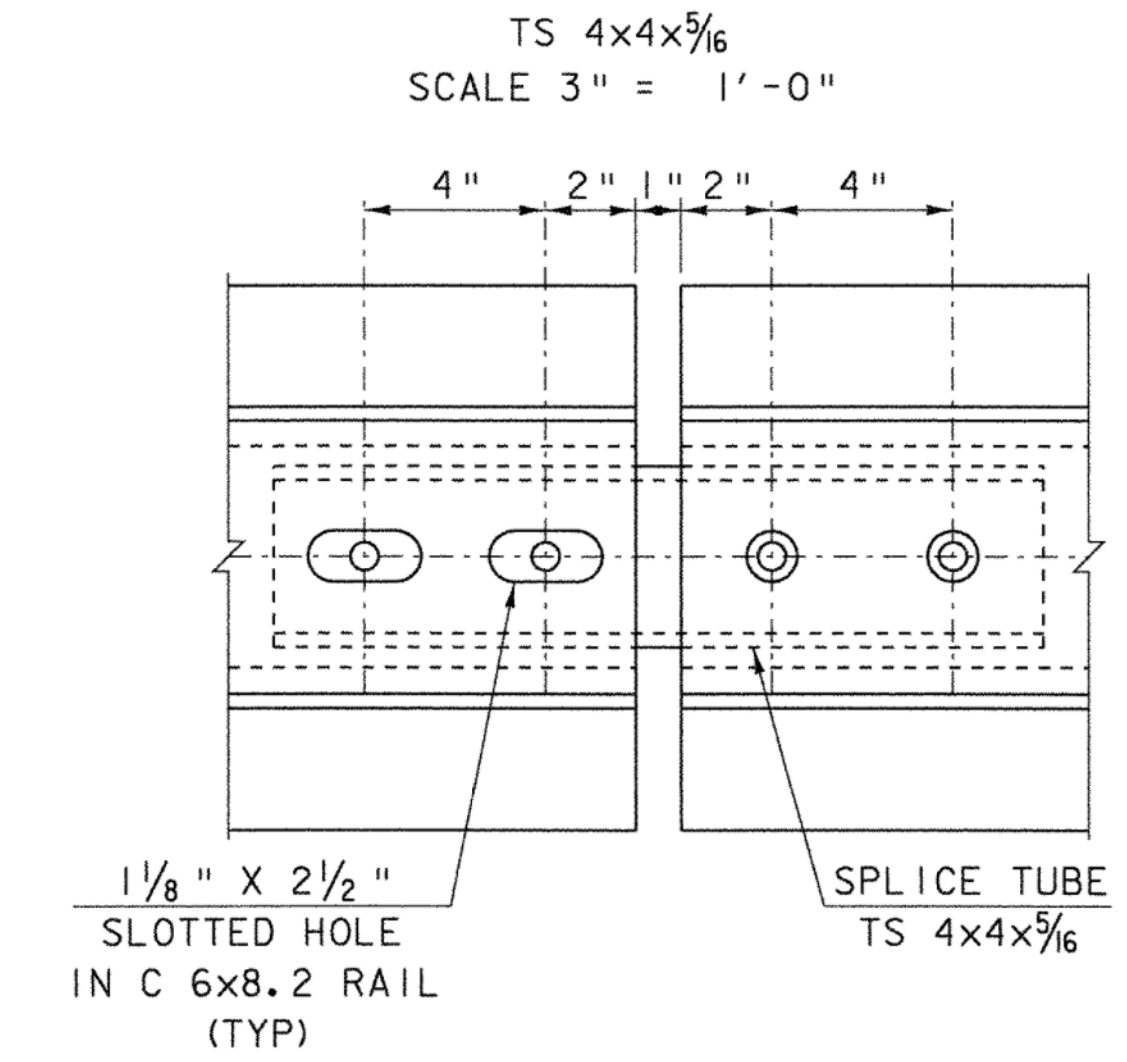


END RAIL POST
SCALE 1 1/2" = 1'-0"

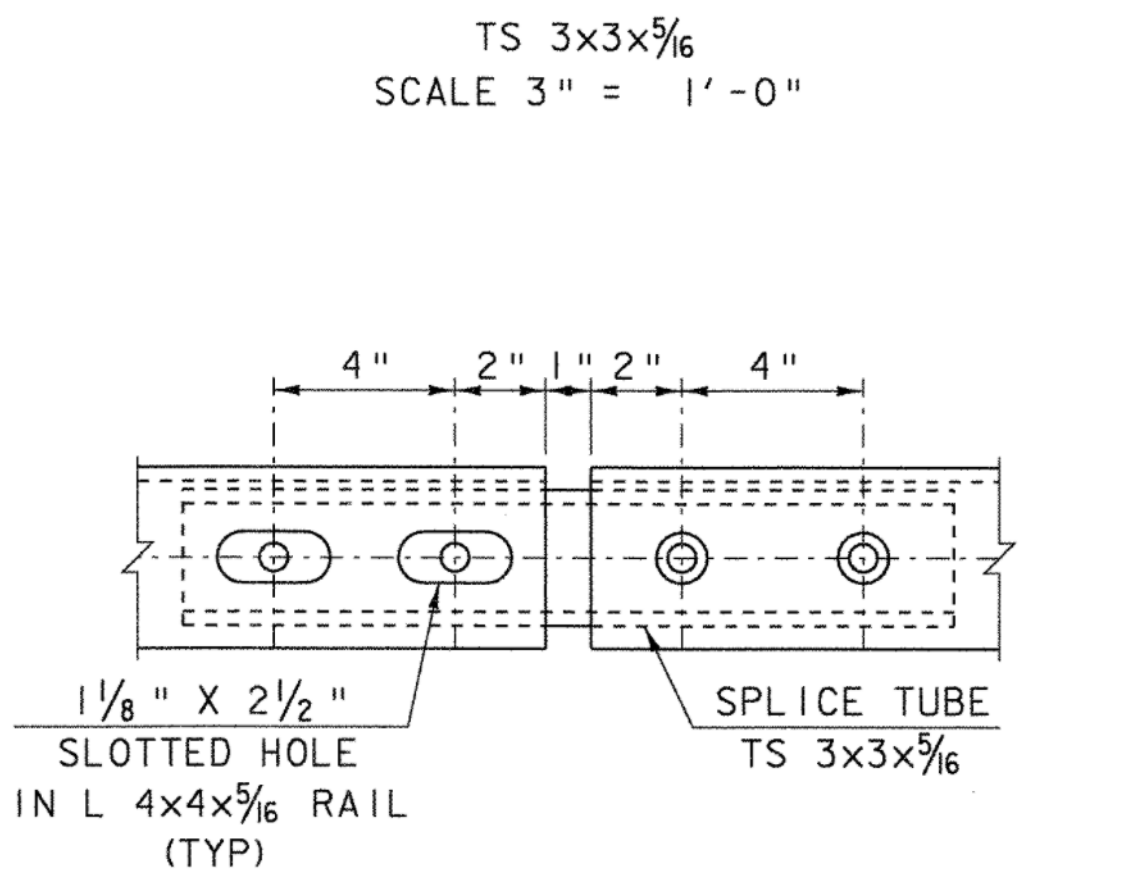
ALL HOLES SHALL BE FIELD DRILLED UNLESS OTHERWISE NOTED.



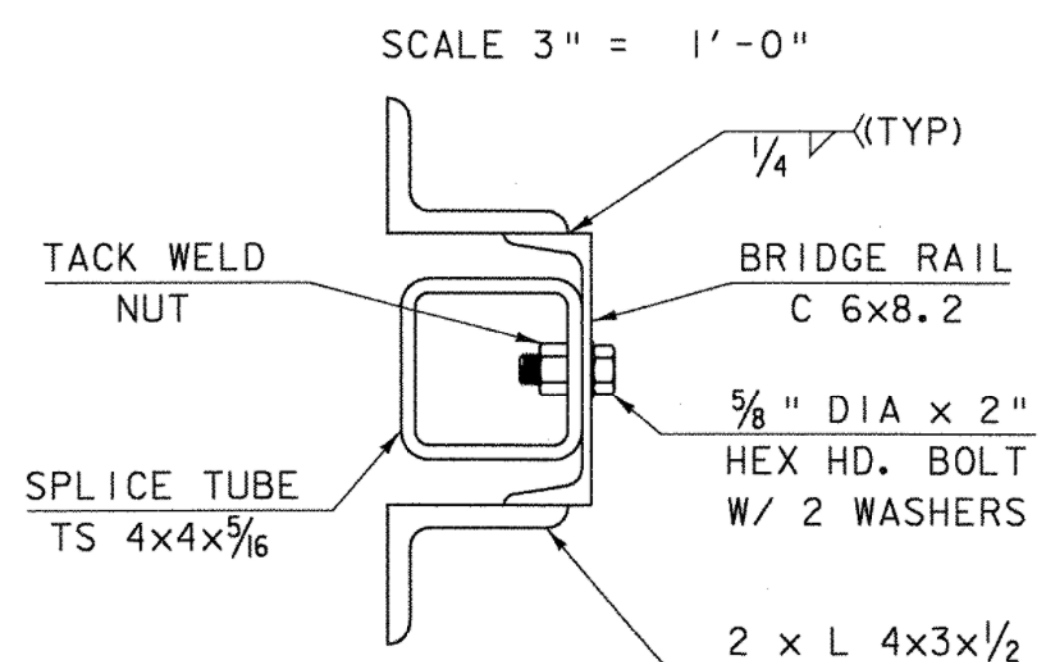
BOTTOM RAIL SPLICE TUBE DETAIL TOP RAIL SPLICE TUBE DETAIL



BOTTOM RAIL SPLICE DETAIL
SCALE 3" = 1'-0"

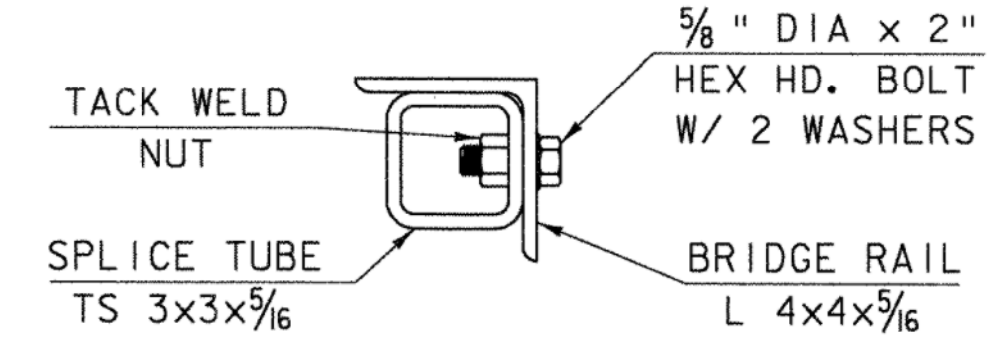


TOP RAIL SPLICE DETAIL
SCALE 3" = 1'-0"

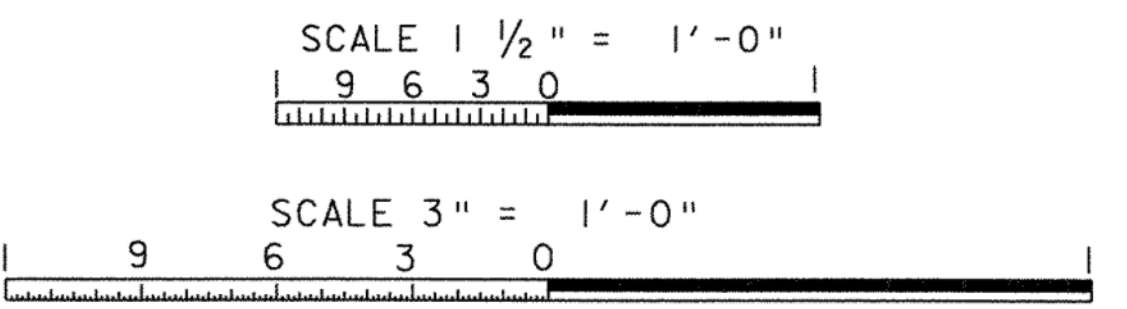


BOTTOM RAIL SPLICE SECTION
SCALE 3" = 1'-0"

NOTE: BOLTS IN SLOTTED HOLES SHALL BE SNUG TIGHT AND COATED TO PREVENT LOOSENING



TOP RAIL SPLICE SECTION
SCALE 3" = 1'-0"



SEE BRIDGE RAILING NOTES ON SHEET 31

**STATE OF VERMONT
AGENCY OF TRANSPORTATION**

Town Of	RICHMOND	Bridge No.	31
Highway No.	T. H. #1	Log Sta.	
		Surv. Sta.	
TOWN HIGHWAY #1 OVER WINOOSKI RIVER			

RAIL SPLICE & END RAIL DETAILS

Designed By	C. P. WILLIAMS	Drawn By	D. D. BEARD
Checked By	C. P. WILLIAMS	Date	12/19/08
		Bridge Design Supervisor	G. BOGUE
PROJECT	RICHMOND	PROJECT NO.	BHF 0209 (5)
CAD Dwg	Structures\08J132_Rolling.dgn	Plot Date	07-JAN-2009
Bridge Sheet No.		Sheet	29 of 50