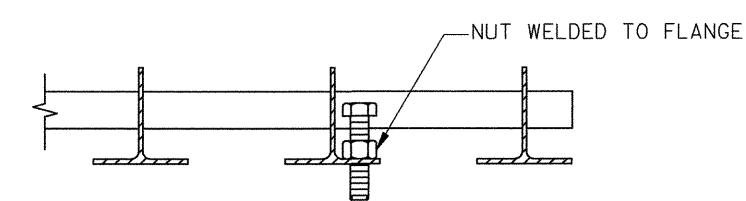


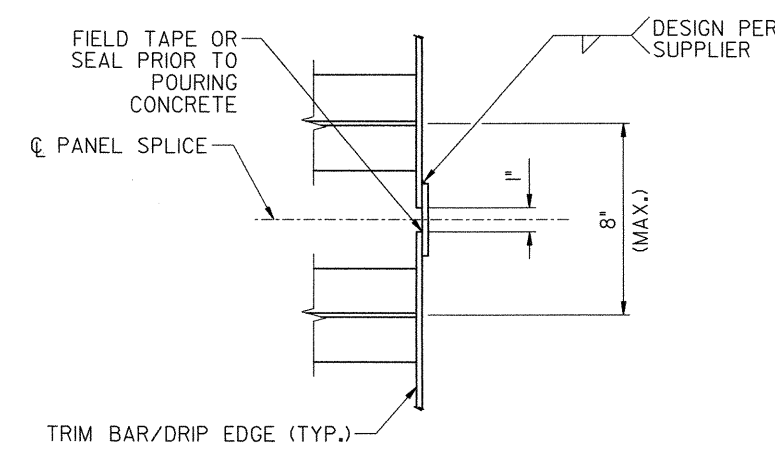
**SECTION F-F**  
(CONCRETE AND REINFORCEMENT NOT SHOWN FOR CLARITY)

**SECTION Y-Y**  
TYPICAL CONNECTION OF TRIM PLATE TO GRID



BOLTS AND NUTS SHALL BE 3/4" DIA. ASTM A307 AND A563, RESPECTIVELY.  
USE THREE PER SUPPORTING BEAM PER PANEL FOR TYPICAL PANELS UP TO 9' WIDE. DEVICES TO BE LOCATED ON FIRST INTERIOR MAIN BAR AND ON A BAR AT OR CLOSE TO THE PANEL CENTERLINE.  
BOLTS CAN BE LOCATED ON EITHER SIDE OF THE WEB OF A MAIN BAR, WHEN POSITIONING THE GRID PANEL HORIZONTALLY, USE A CRANE TO KEEP THE FULL DEAD LOAD OFF OF THE LEVELING BOLTS.

**LEVELING DEVICE DETAIL**



**SECTION X-X**  
TYPICAL PLAN VIEW AT PANEL SPLICE

|  |                                |                          |             |
|--|--------------------------------|--------------------------|-------------|
| <b>STATE OF VERMONT<br/>AGENCY OF TRANSPORTATION</b> |                                |                          |             |
| Town Of  | RICHMOND                       | Bridge No.               | 31          |
| Highway No.  | T.R. #1                        | Log Sta.                 |             |
| TOWN HIGHWAY #1 OVER WINDOSKI RIVER                  |                                |                          |             |
| <b>BRIDGE DECK DETAILS 3</b>                         |                                |                          |             |
| Designed By  | T. KNIGHT                      | Drawn By                 | J. SOTER    |
| Checked By   | T. KNIGHT                      | Date                     | 01/09       |
| PROJECT  | RICHMOND                       | Bridge Design Supervisor | G. BOGUE    |
|  |                                | Date                     | 01/09       |
|  |                                | PROJECT NO.              | BHF 0209(5) |
| CAD Draw   | ...120832_BRIDGE DECK DETS.dgn | Plot Date                | 1/8/2009    |
| Bridge Sheet No.                                     |                                | Sheet                    | 25 of 50    |

