

PEDESTRIAN RAILING ELEVATION

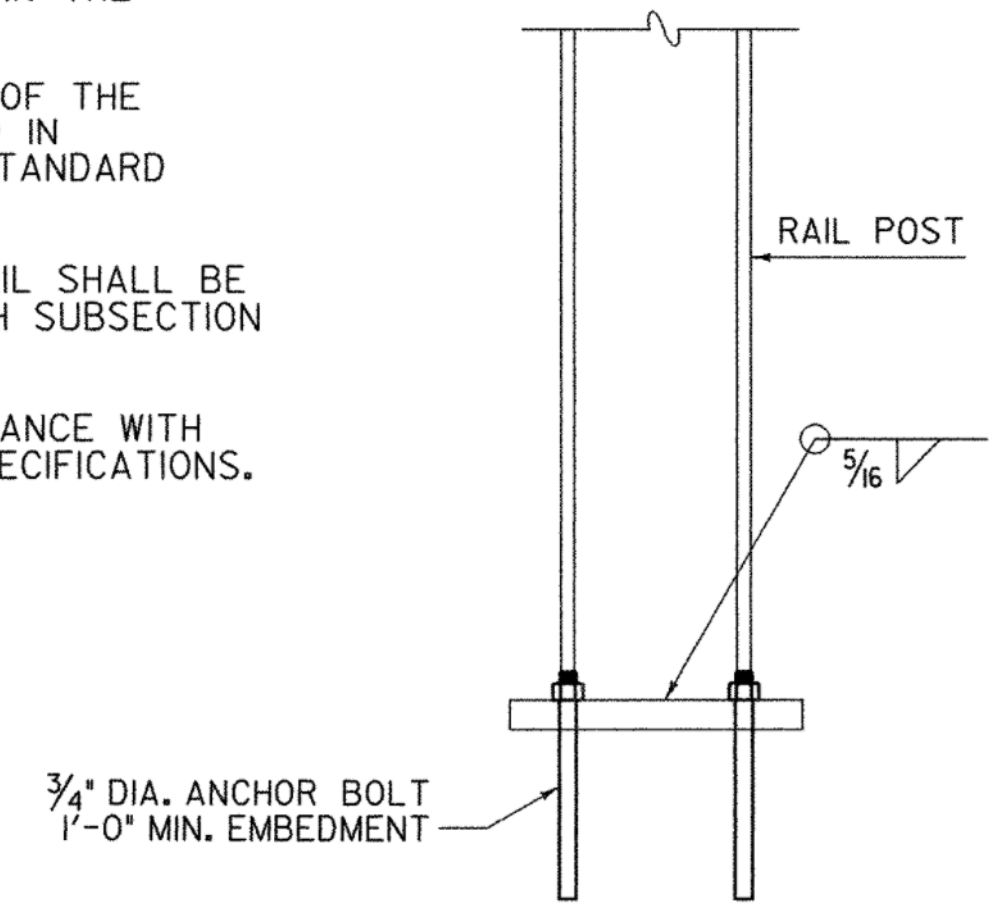
SCALE: 3/4" = 1'-0"

SIDEWALK X-X

SCALE: 3/4" = 1'-0"

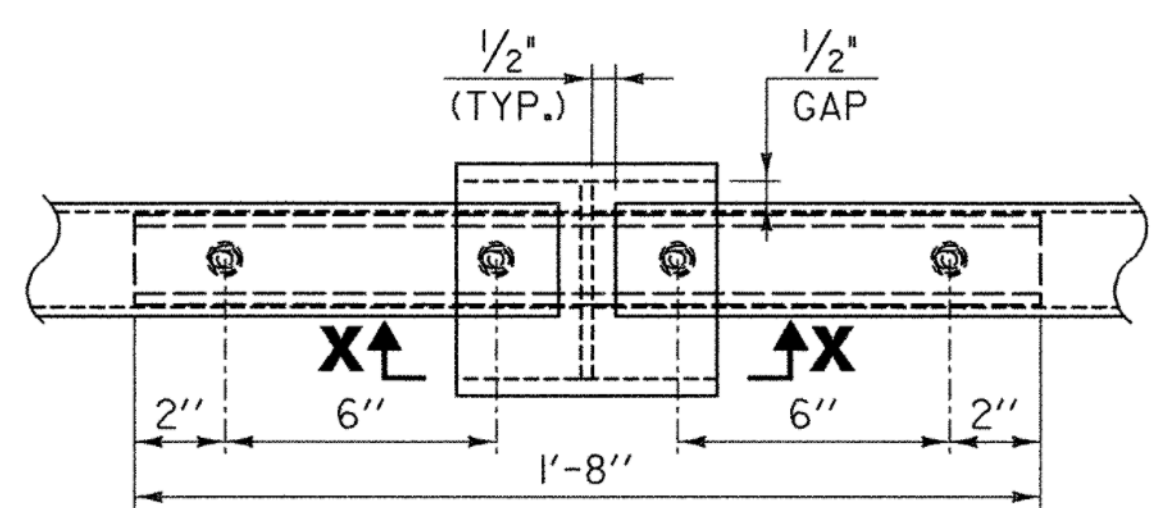
NOTES:

1. ALL STEEL EXCEPT TUBE SECTIONS SHALL CONFORM TO AASHTO M 270M/M 270, GRADE 36.
2. ALL STEEL TUBING SHALL CONFORM TO SUBSECTION 714.II.
3. RAIL SHALL BE FABRICATED SUCH THAT POSTS ARE NORMAL TO GRADE.
4. PANELS SHALL BE FABRICATED SUCH THAT INDIVIDUAL PANELS CAN BE REMOVED AND REPAIRED IN THE FUTURE.
5. FABRICATION DRAWINGS SHOWING DETAILS OF THE PEDESTRIAN RAILING SHALL BE SUBMITTED IN ACCORDANCE WITH SECTION 105 OF THE STANDARD SPECIFICATIONS.
6. ALL COMPONENTS OF THE PEDESTRIAN RAIL SHALL BE HOT DIP GALVANIZED IN ACCORDANCE WITH SUBSECTION 506.15 OF THE STANDARD SPECIFICATIONS.
7. ALL ANCHOR BOLTS SHALL BE IN ACCORDANCE WITH SUBSECTION 714.07 OF THE STANDARD SPECIFICATIONS.



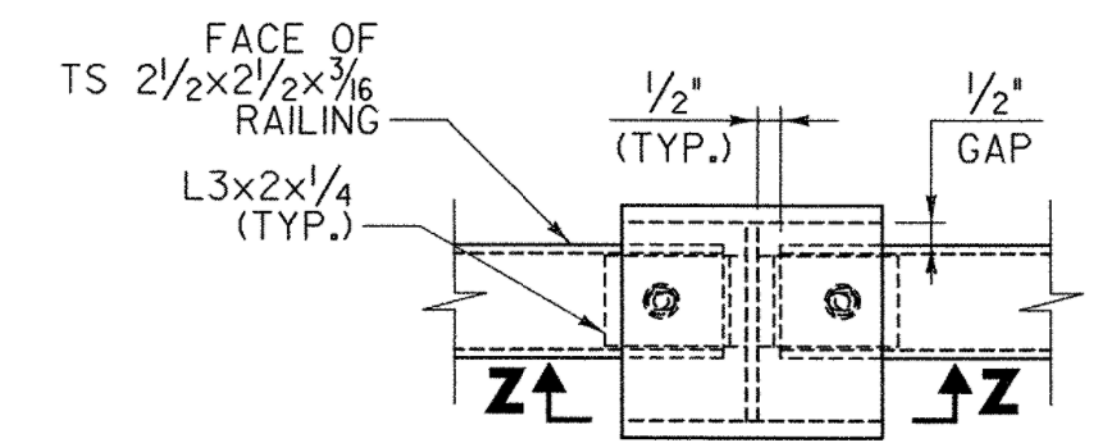
BASE WELD DETAIL

NOT TO SCALE

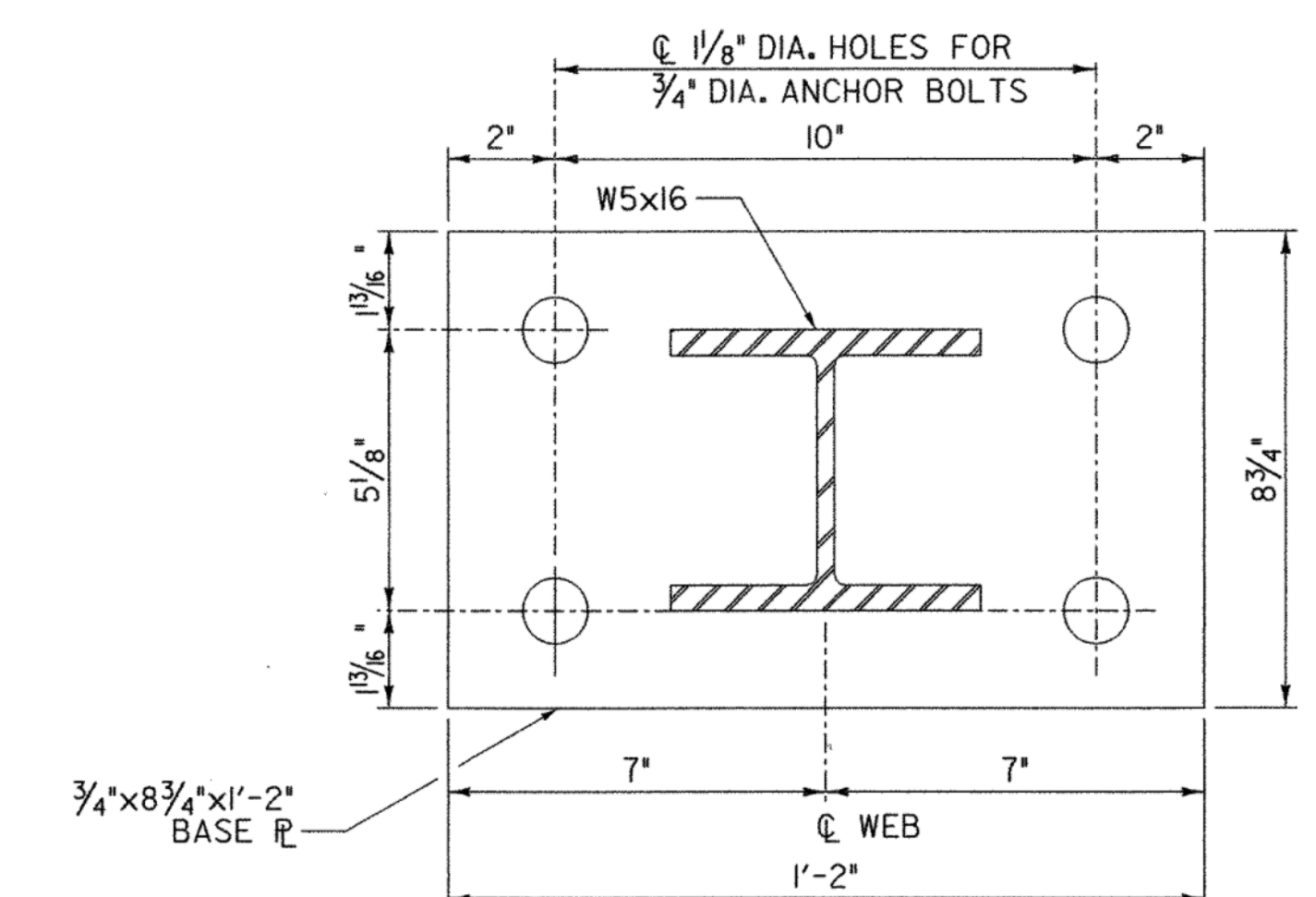


PLAN

A 4x3x3/8" GALVANIZED ANGLE WAS ADDED TO THE UNDERSIDE OF EACH BOTTOM RAIL FOR SAFETY REASONS
SEE CHANGE ORDER #6
ADDITIONAL DEAD LOAD = 4,095.61 lbs

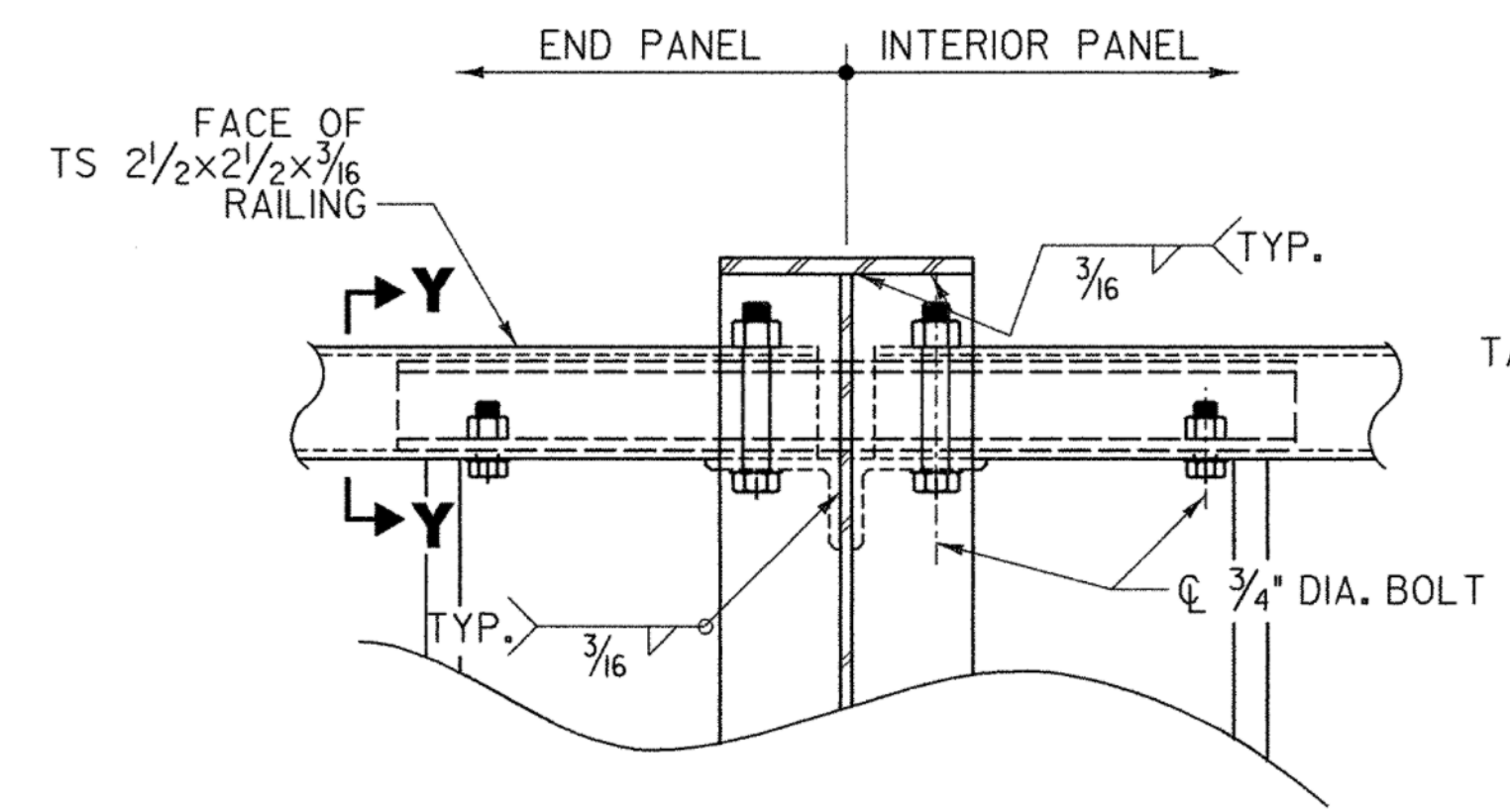


PLAN



POST & BASE PLATE

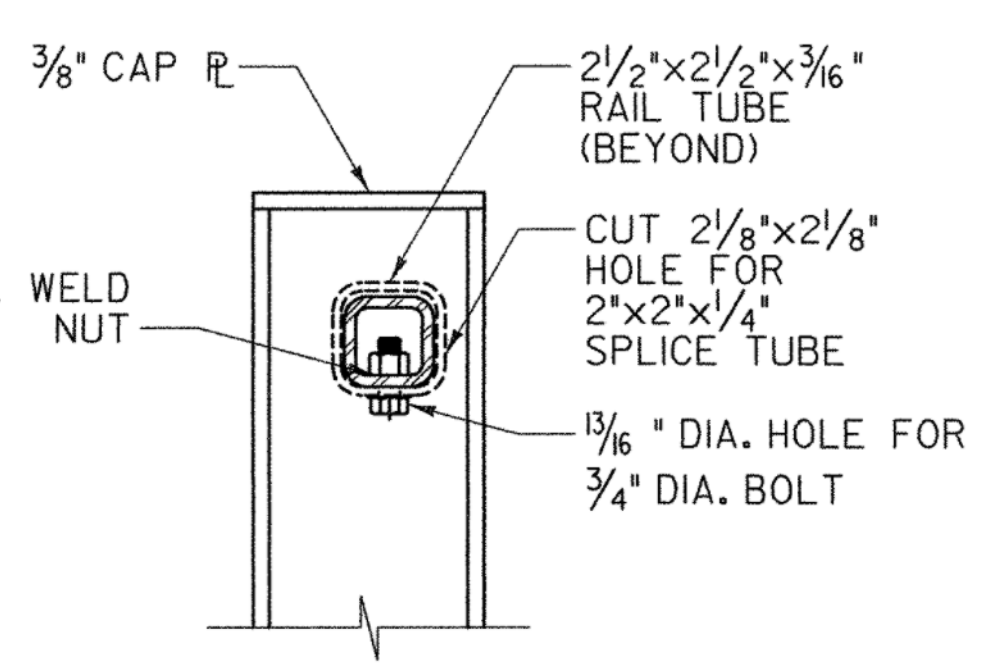
NOT TO SCALE



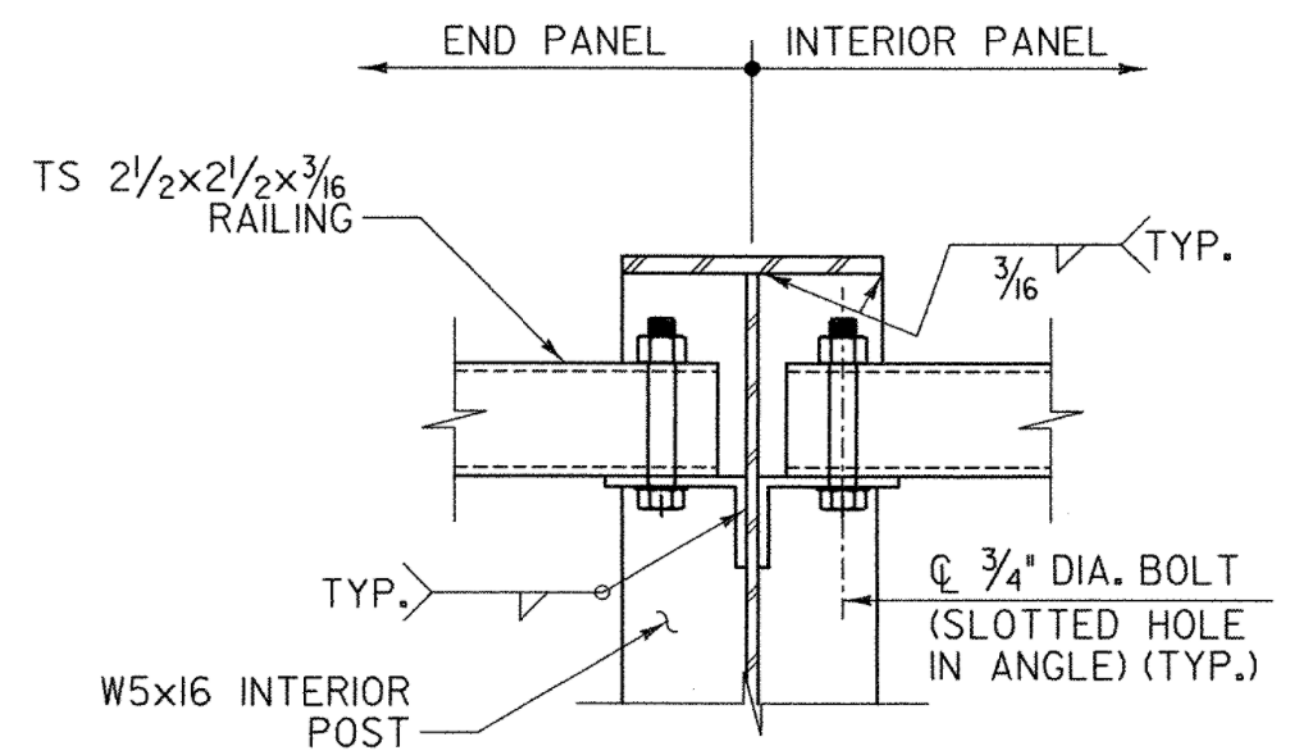
SECTION X-X

END PANEL CONNECTION DETAILS

SCALE: 3" = 1'-0"



SECTION Y-Y



SECTION Z-Z

INTERIOR PANEL RAIL CONNECTION DETAILS

SCALE: 3" = 1'-0"



STATE OF VERMONT			
AGENCY OF TRANSPORTATION			
Town Of	RICHMOND	Bridge No.	31
Highway No.	T.H. #1	Log Sta.	
		Surv. Sta.	
TOWN HIGHWAY #1 OVER WINOOSKI RIVER			
PEDESTRIAN RAILING DETAILS			
Designed By	T. KNIGHT	Drawn By	J. SOTER
Checked By	T. KNIGHT	Date	01/09
		Bridge Design Supervisor	G. BOGUE
		Date	01/09
PROJECT	RICHMOND	PROJECT NO.	BHF 0209(5)
CAD Dwg:	...z08j132_PED RAIL DETS.dgn	Plot Date:	1/8/2009
Bridge Sheet No.		Sheet	23 of 50