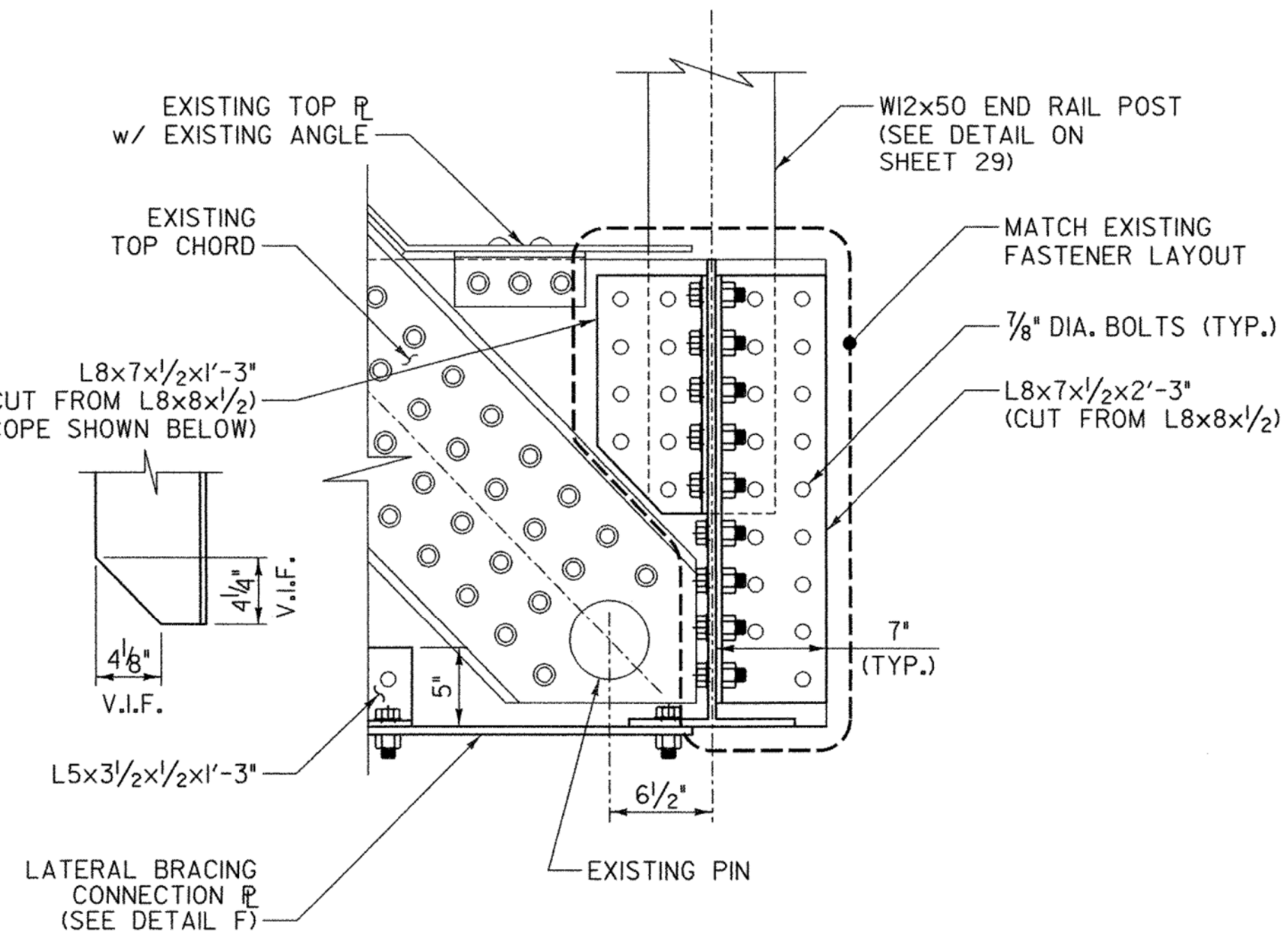


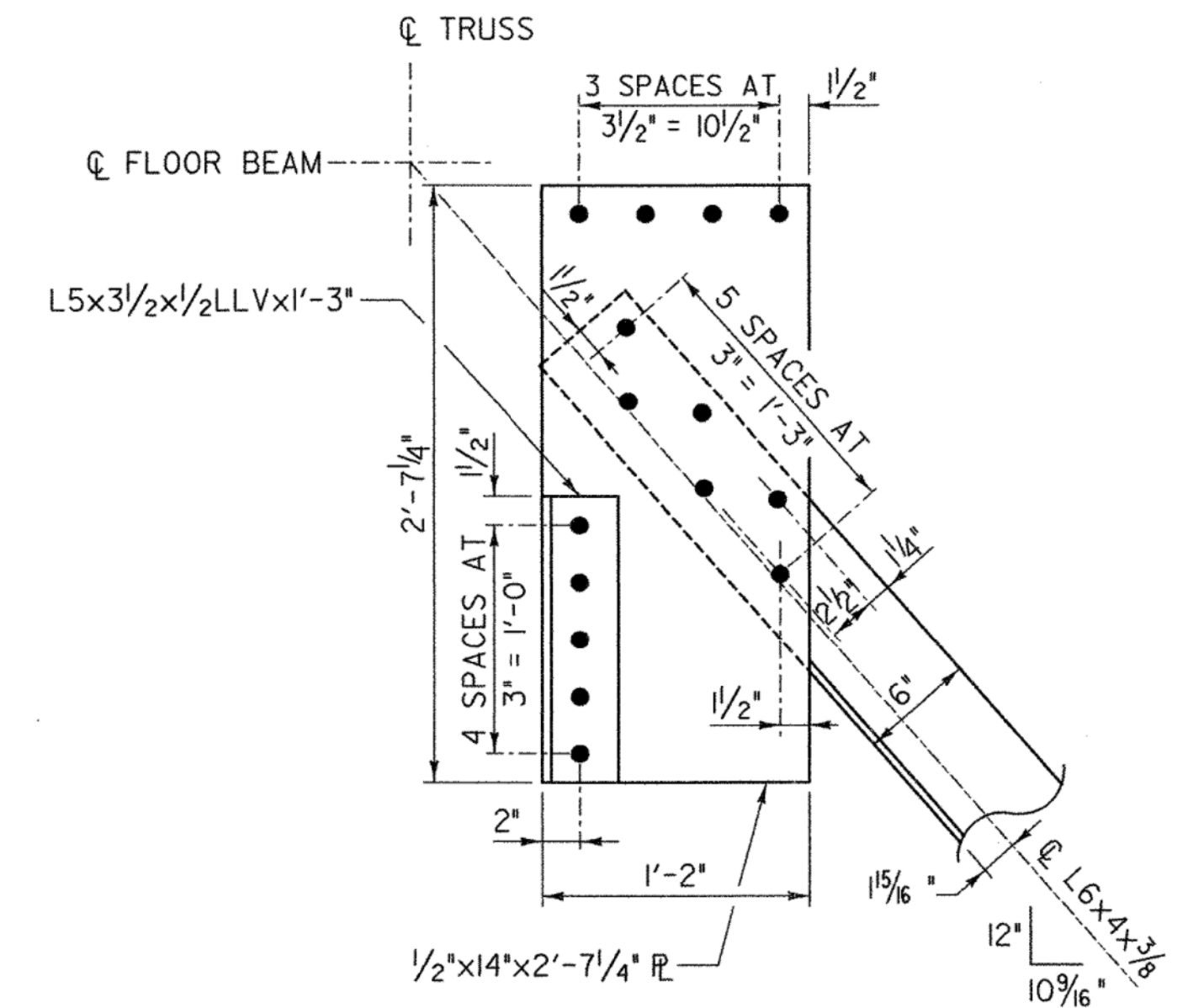
**BEAM TO TRUSS CONNECTION  
DETAIL (FBO & FB9)**

SCALE 1 1/2" = 1'-0"  
9 6 3 0



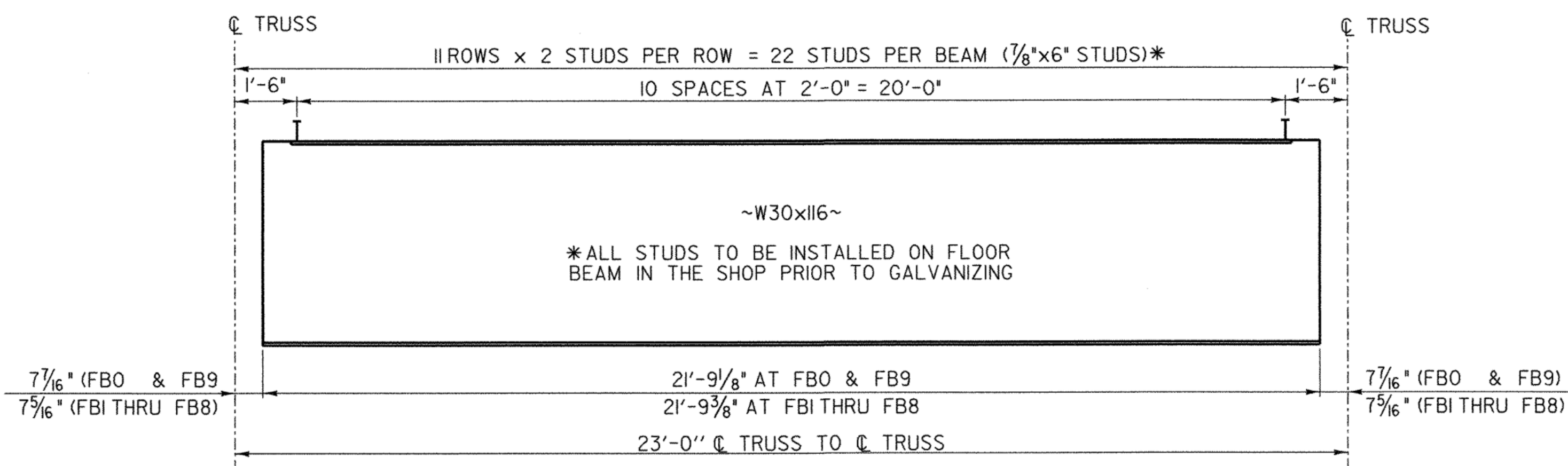
**SECTION E-E**

SCALE 1 1/2" = 1'-0"  
9 6 3 0



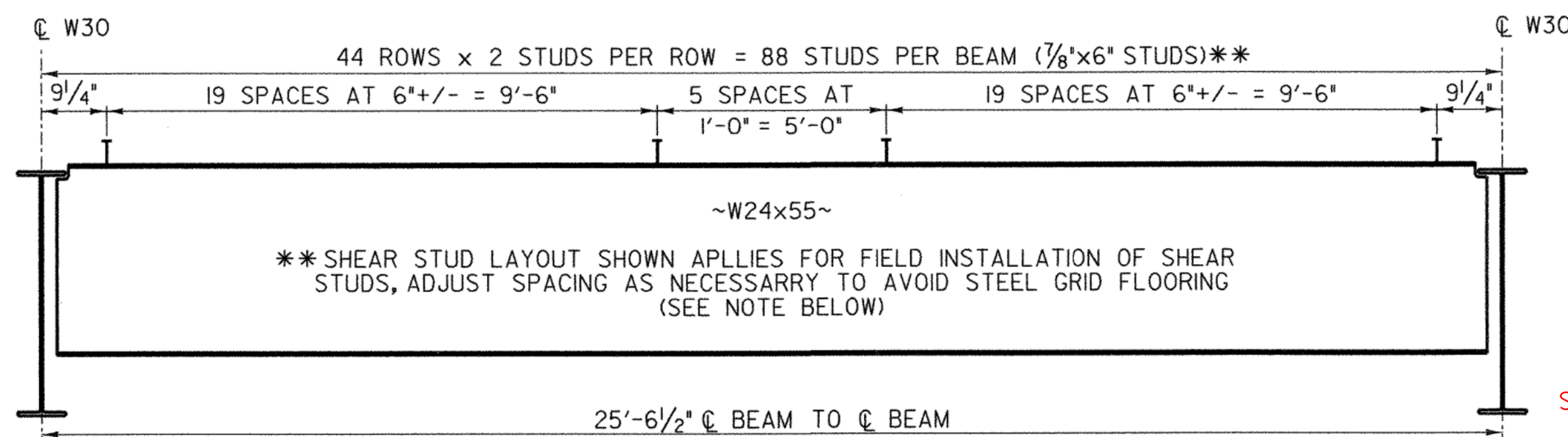
**DETAIL F**

SCALE 1 1/2" = 1'-0"  
9 6 3 0



**W30 FLOOR BEAM ELEVATION**

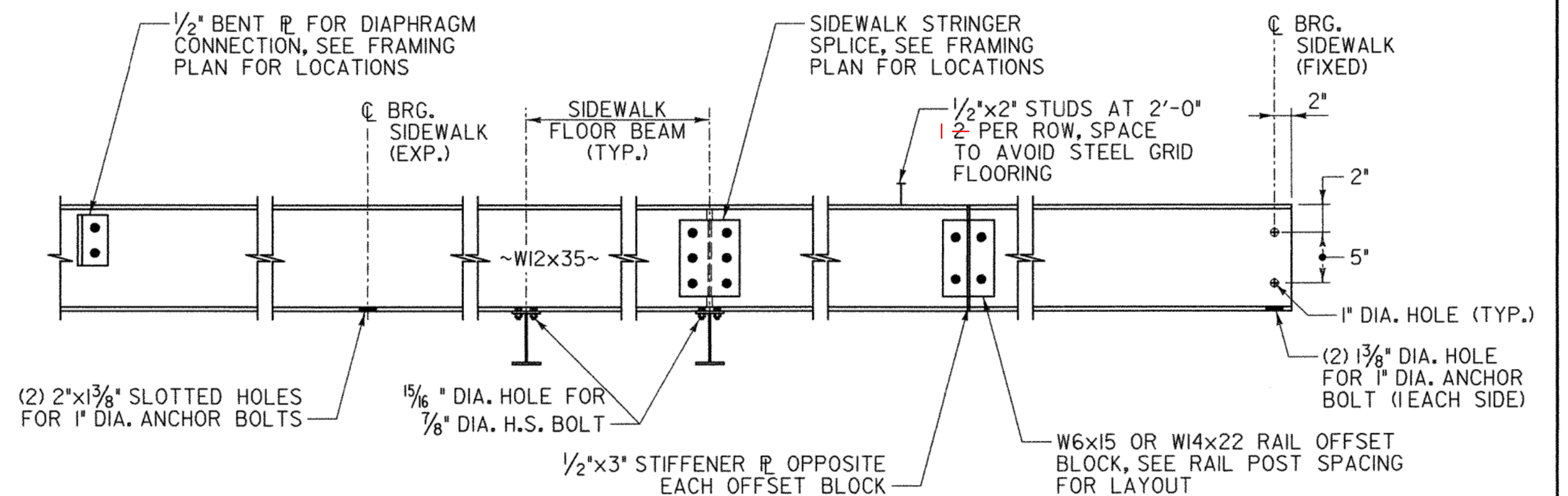
NOT TO SCALE



**W24 STRINGER ELEVATION**

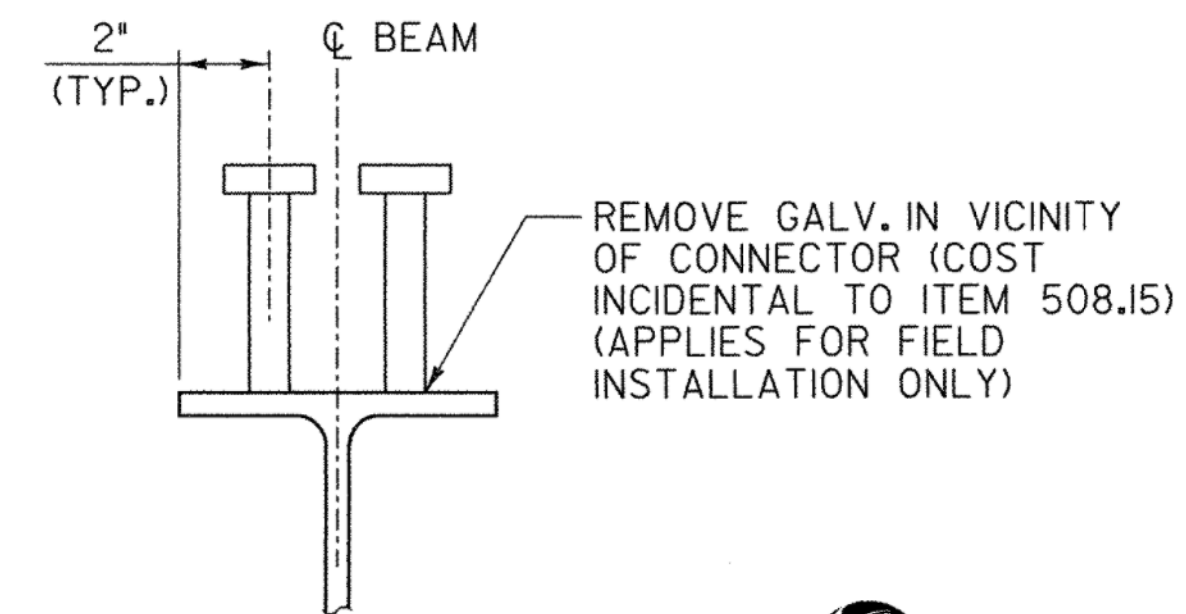
NOT TO SCALE

NOTE: CONTRACTOR SHALL HAVE THE OPTION OF INSTALLING THE STUDS OF STRINGER IN THE SHOP PRIOR TO GALVANIZING. IF THE CONTRACTOR ELECTS TO SHOP INSTALL THE STUDS, THEY SHALL SUBMIT A REVISED STUD LAYOUT TO AVOID INTERFERENCE WITH THE STEEL GRID FLOORING.



**PARTIAL SIDEWALK STRINGER ELEVATION**

NOT TO SCALE



**SHEAR CONNECTOR DETAIL**

NOT TO SCALE

**NOTE:**

1. REFER TO SHEET 16 FOR LEGEND.

**STATE OF VERMONT  
AGENCY OF TRANSPORTATION**

Town Of	RICHMOND	Bridge No.	31
Highway No.	T.H. #1	Log Sta.	
		Surv. Sta.	

TOWN HIGHWAY #1 OVER WINOOSKI RIVER

**STEEL DETAILS 4**

Designed By	S. BURBANK	Drawn By	J. SOTER
Checked By	Date	Bridge Design Supervisor	
S. BURBANK	01/09	G. BOGUE	Date 01/09

PROJECT	RICHMOND	PROJECT NO.	BHF 0209(5)
---------	----------	-------------	-------------

CAD Dwg: ...drawing\208J32-STEEL DETS.dgn Plot Date: 1/8/2009

Bridge Sheet No. Sheet 19 of 50

