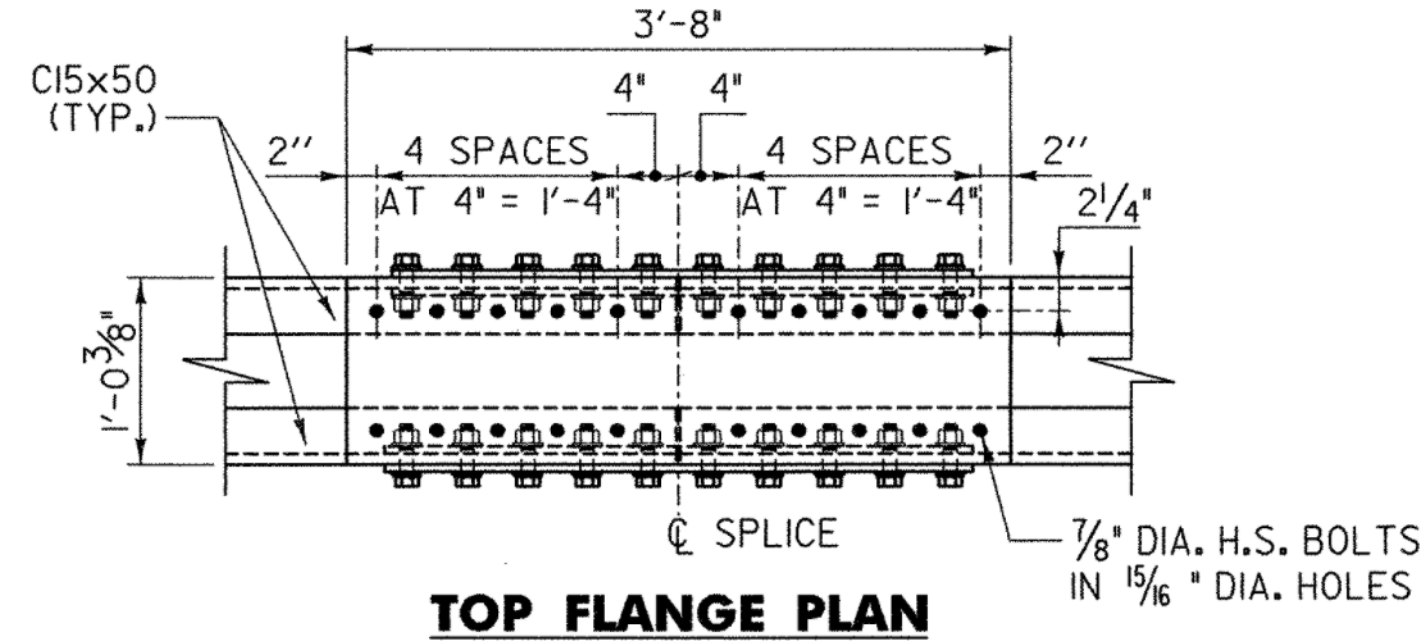
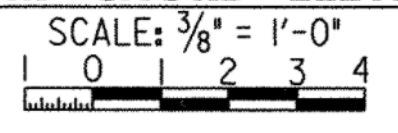
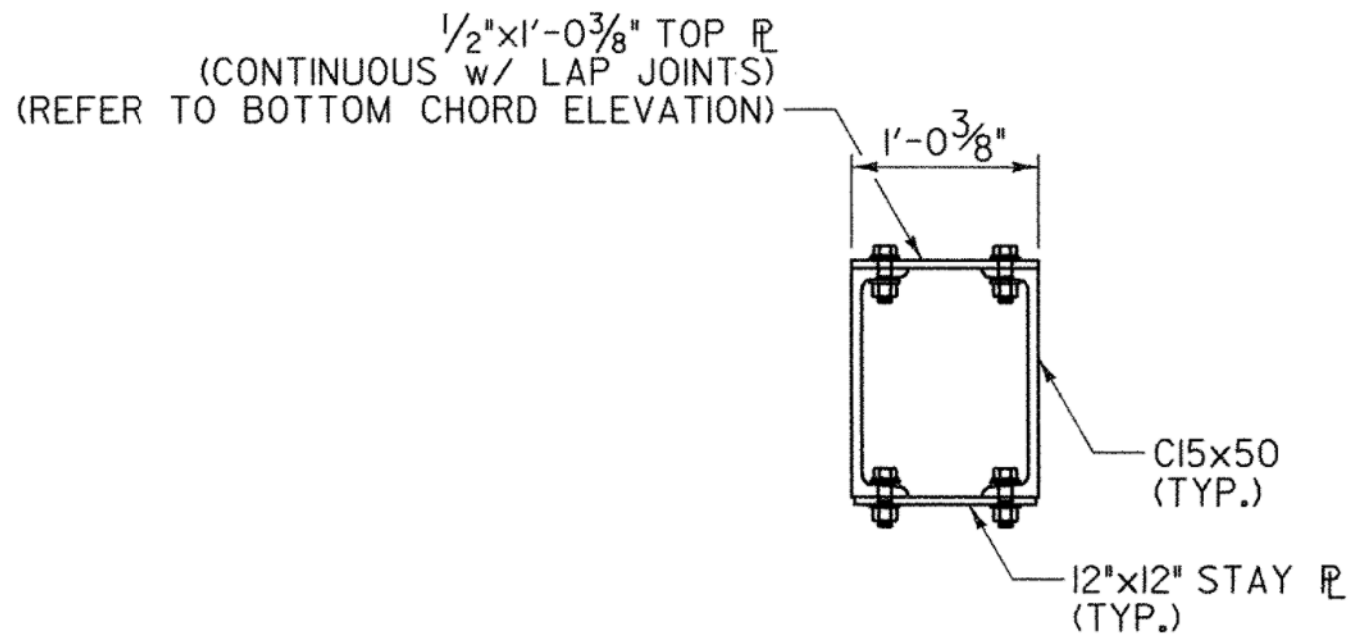


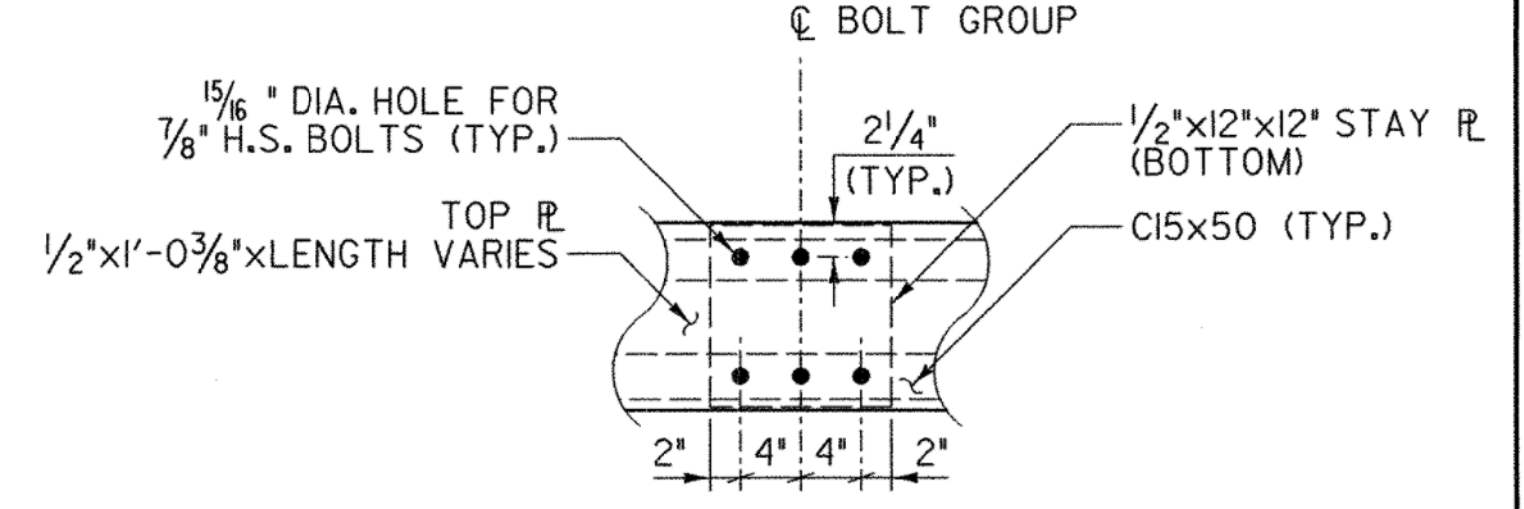
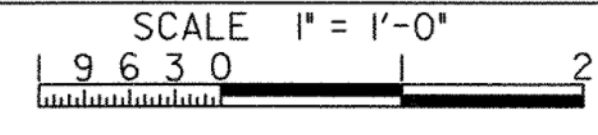
BOTTOM CHORD ELEVATION



TOP FLANGE PLAN

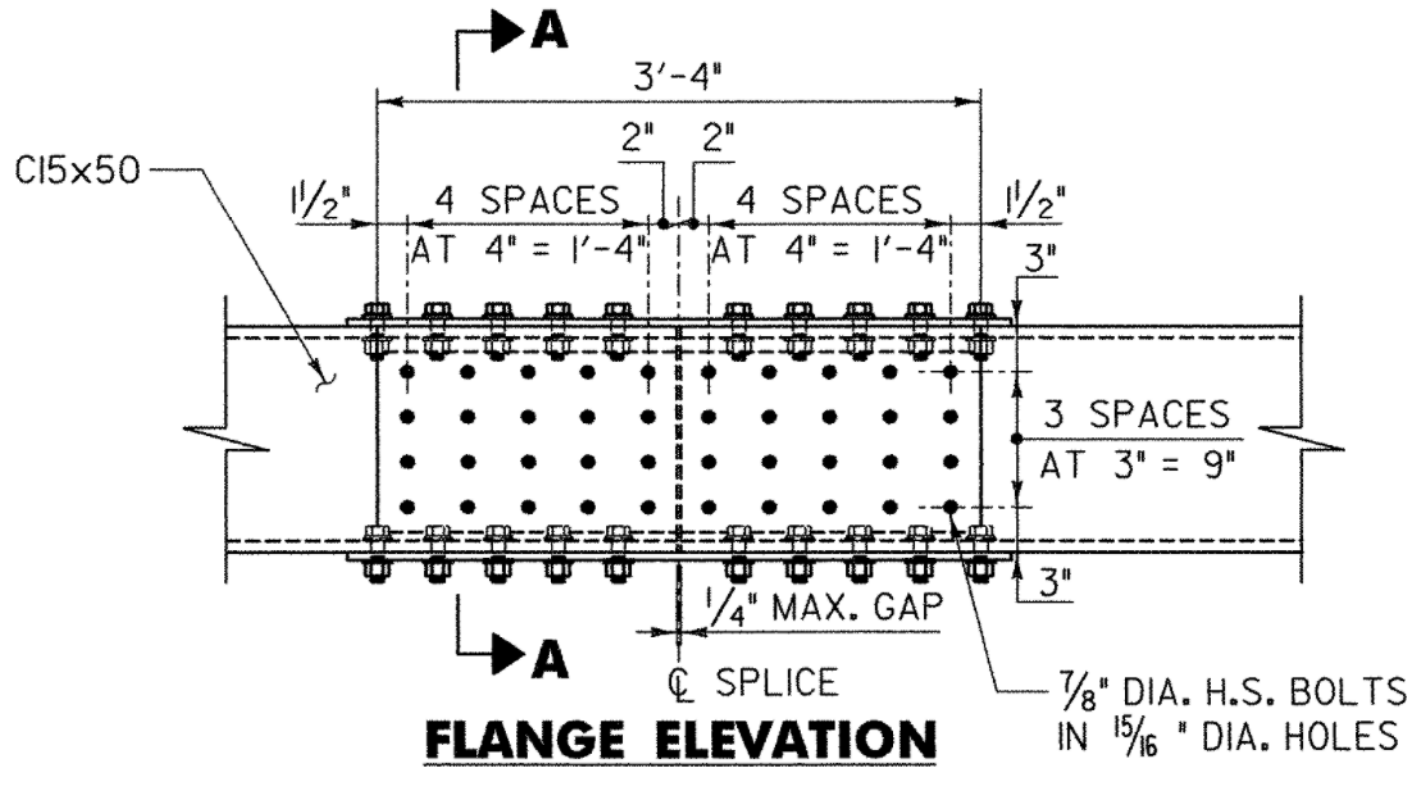
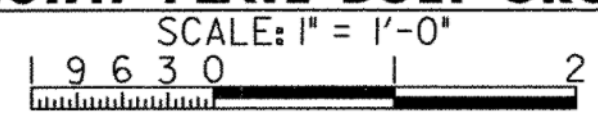


TYPICAL BOTTOM CHORD SECTION

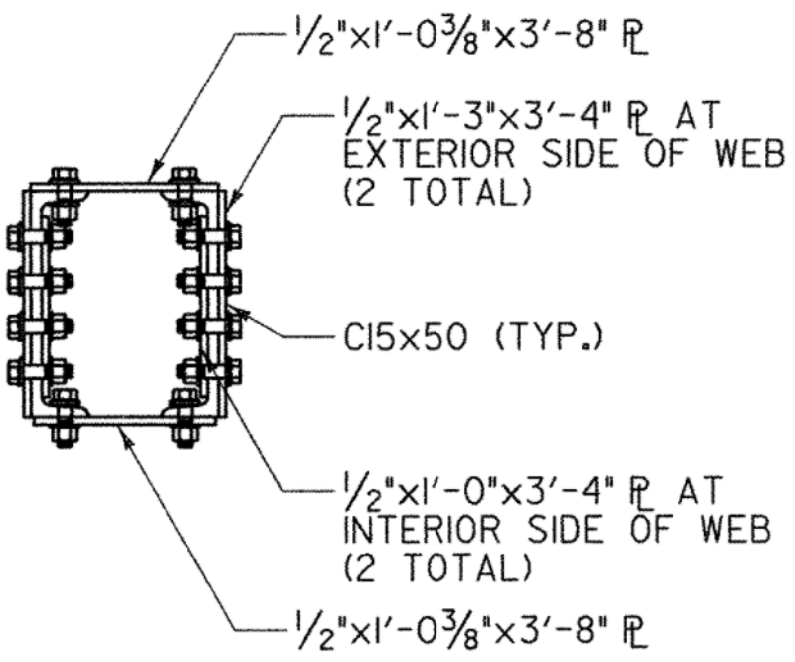


PLAN

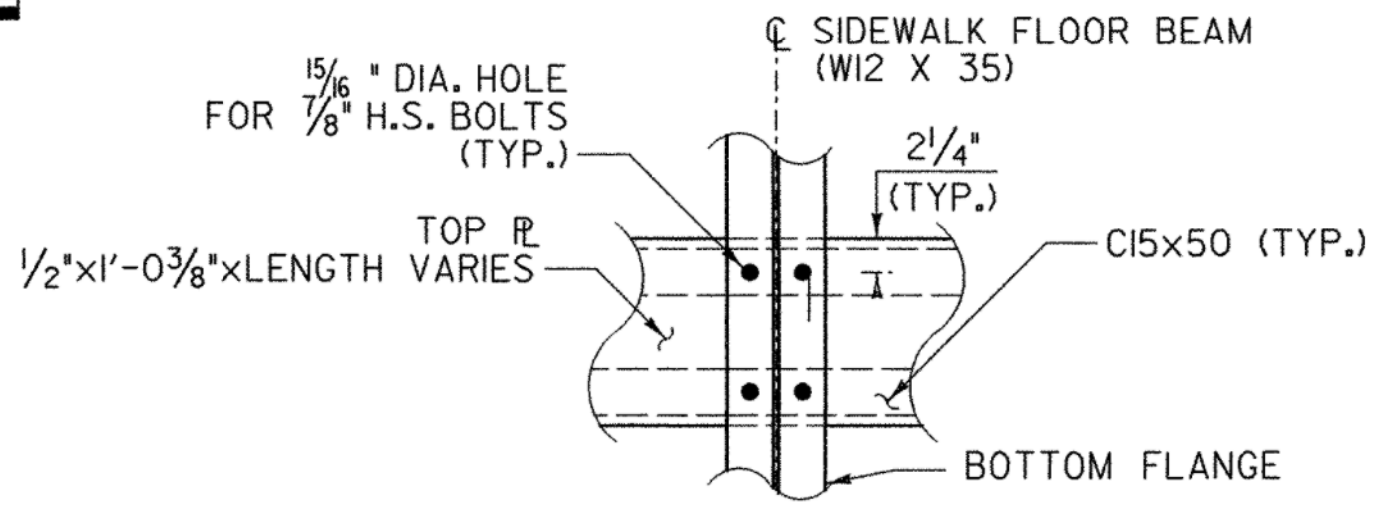
TOP PLATE/STAY PLATE BOLT GROUP DETAIL



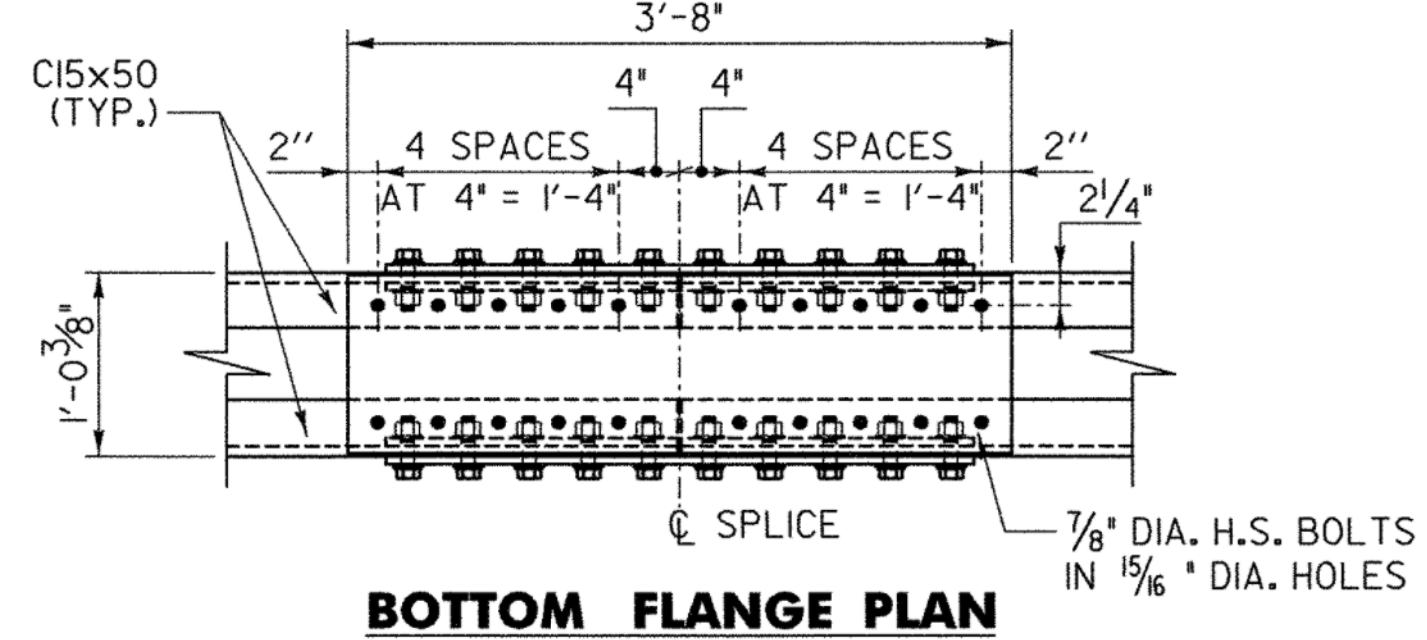
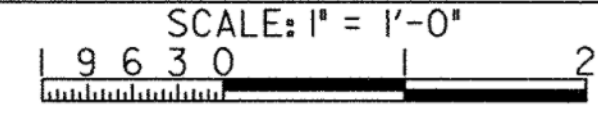
FLANGE ELEVATION



SECTION A-A

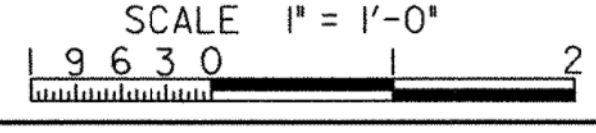


BOLT GROUP AT SIDEWALK FLOOR BEAM

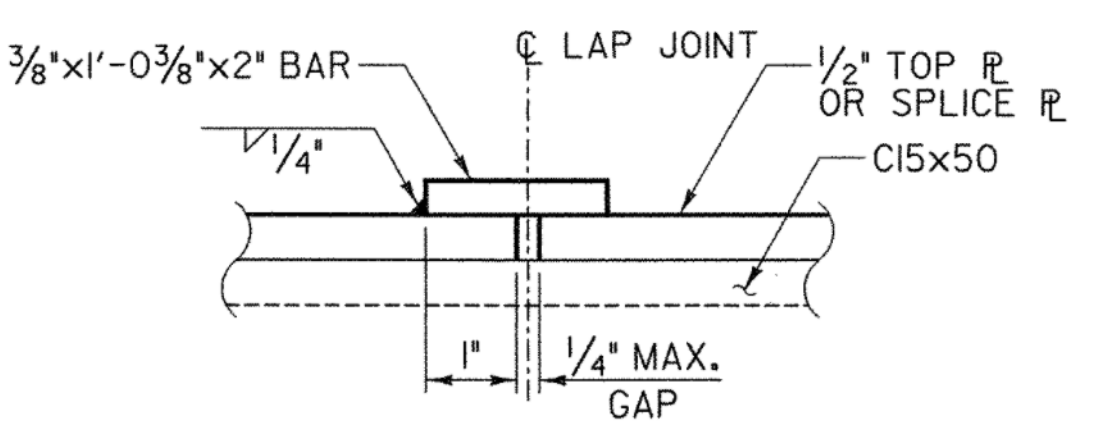


BOTTOM FLANGE PLAN

BOTTOM CHORD SPLICE



- NOTES:**
1. ALL SPLICE PLATES ARE FRACTURE CRITICAL MEMBERS.
 2. TOP PLATE LAP JOINT NOT SHOWN FOR CLARITY.



TOP PLATE LAP JOINT DETAIL

(OPPOSITE HAND SOME LOCATIONS)
NOT TO SCALE

LEGEND	
●	NEW 15/16" DIA. HOLE FOR 7/8" DIA. BOLT UNLESS NOTED OTHERWISE
○	EXISTING RIVETS TO BE REPLACED w/ 7/8" DIA. BOLTS. LAYOUT TO BE DETERMINED FROM FIELD MEASUREMENTS
⊙	EXISTING RIVETS TO REMAIN
NS	NEAR SIDE (ROADWAY SIDE OF TRUSS)
FS	FAR SIDE (OUTSIDE OF TRUSS)

STATE OF VERMONT AGENCY OF TRANSPORTATION			
Town Of	RICHMOND	Bridge No.	31
Highway No.	T.H. #1	Log Sta.	
		Surv. Sta.	
TOWN HIGHWAY #1 OVER WINOOSKI RIVER			
STEEL DETAILS 1			
Designed By	T. KNIGHT	Drawn By	J. SOTER
Checked By	T. KNIGHT	Date	01/09
		Bridge Design Supervisor	G. BOGUE
		Date	01/09
PROJECT	RICHMOND	PROJECT NO.	BHF 0209(5)
CAD Dwg:	...drawing\z08j132_STEEL DETS.dgn	Plot Date:	1/8/2009
Bridge Sheet No.		Sheet	16 of 50

