

LOWER GUSSET PLATES AT PANEL L0 TO REMAIN

NEW BOTTOM CHORD (2)-C15x50 WITH 1/2" x 1'-0 3/8" TOP PLATE (TYP.)

LOWER GUSSET PLATES AT PANEL L9 TO REMAIN

TRUSS ELEVATION

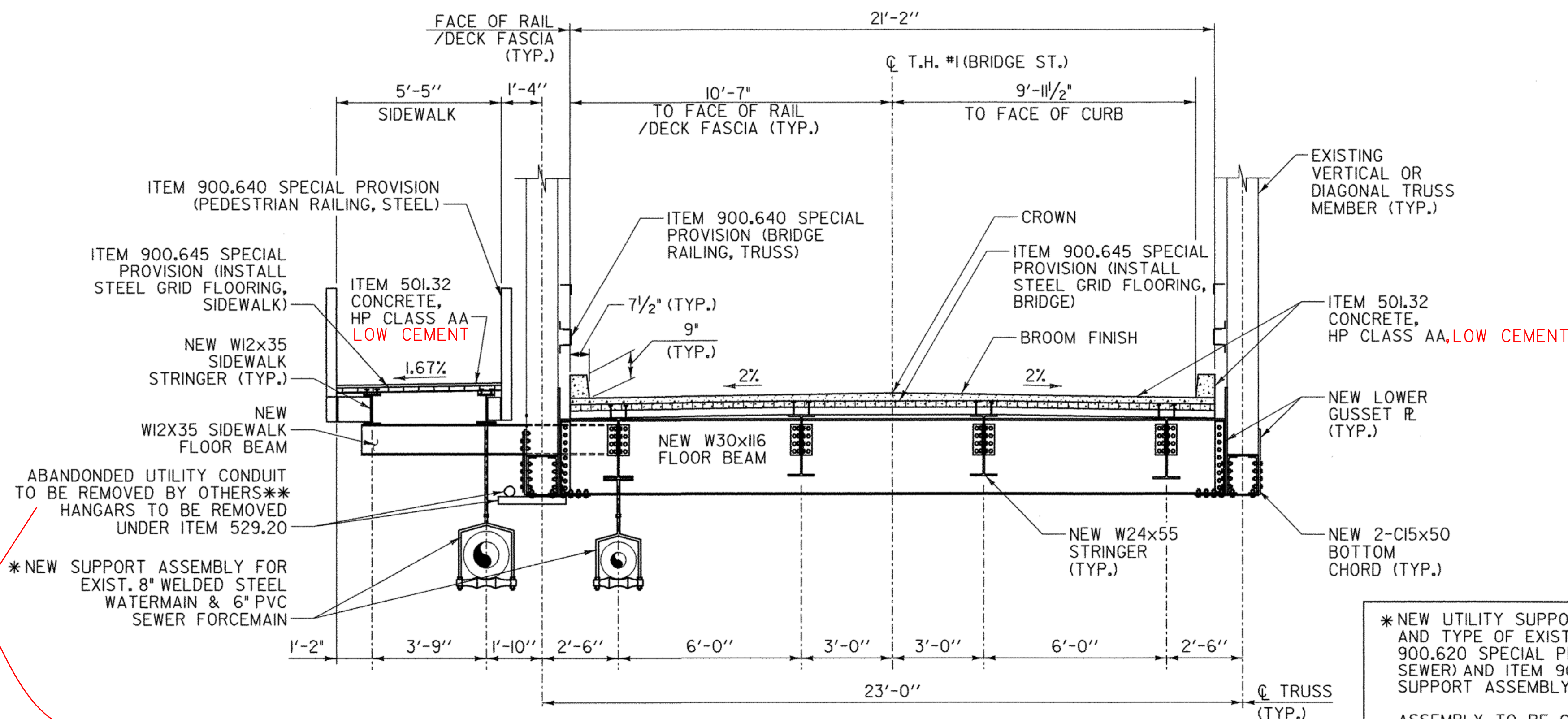
SCALE: 1/8" = 1'-0"
0 2 4 6 8

NOTES:

- EAST TRUSS ELEVATION SHOWN. WEST TRUSS ELEVATION SIMILAR, EXCEPT PREFIX.
- THE ENTIRE FLOOR SYSTEM, BOTTOM CHORD, LOWER LATERAL BRACING AND LOWER GUSSET PLATES WILL BE REMOVED AND REPLACED WITH NEW GALVANIZED STEEL UNLESS NOTED OTHERWISE.
- VERTICAL AND DIAGONAL TRUSS MEMBERS WILL BE RETAINED.

CAMBER ELEVATIONS
TOP OF BOTTEM CHORD
L0 = 314.32
L9 = 312.365
MIDSPAN = 313.775

$$313.775 - \left[\frac{(314.32 - 312.365)}{2} \right] + 312.365 = 0.433 \text{ OR } 5 \frac{1}{8}"$$



REHABILITATED BRIDGE TYPICAL SECTION

SCALE: 3/8" = 1'-0"
0 1 2 3 4

*NEW UTILITY SUPPORT ASSEMBLIES TO MATCH LOCATION AND TYPE OF EXISTING HANGERS. IN ACCORDANCE WITH ITEM 900.620 SPECIAL PROVISION (UTILITY SUPPORT ASSEMBLY, SEWER) AND ITEM 900.620 SPECIAL PROVISION (UTILITY SUPPORT ASSEMBLY, WATER).

ASSEMBLY TO BE COOPER B-LINE ADJUSTABLE STEEL YOKE AND PIPE ROLL (PART NO. B310), COOPER B-LINE W/ 1" DIA. ASTM A 307 THREADED ROD AND STEEL BEAM CLAMP (PART NO. B3055-I) OR EQUIVALENT ASSEMBLY.

CONTACTOR SHALL TAKE NECESSARY MEASUREMENTS TO ORDER APPROPRIATE HARDWARE.

**REFER TO SPECIAL PROVISIONS.

KD ASSOCIATES, INC
REMOVED THE PIPE

DEMO/RENO NOTIFICATION

ARTICLE # 7002-2410001-4442-6371

**STATE OF VERMONT
AGENCY OF TRANSPORTATION**

Town Of	RICHMOND	Bridge No.	31
Highway No.	T.H. #1	Log Sta.	
		Surv. Sta.	
TOWN HIGHWAY #1 OVER WINOOSKI RIVER			
TYPICAL BRIDGE SECTION AND ELEVATION			
Designed By	T. KNIGHT	Drawn By	J. SOTER
Checked By	T. KNIGHT	Date	01/09
		Bridge Design Supervisor	G. BOGUE
		Date	01/09
PROJECT	RICHMOND	PROJECT NO.	BHF 0209(5)
CAD Dwg:	...drawing\z08J32_TYPSEC.dgn	Plot Date:	1/8/2009
Bridge Sheet No.		Sheet	15 of 50

