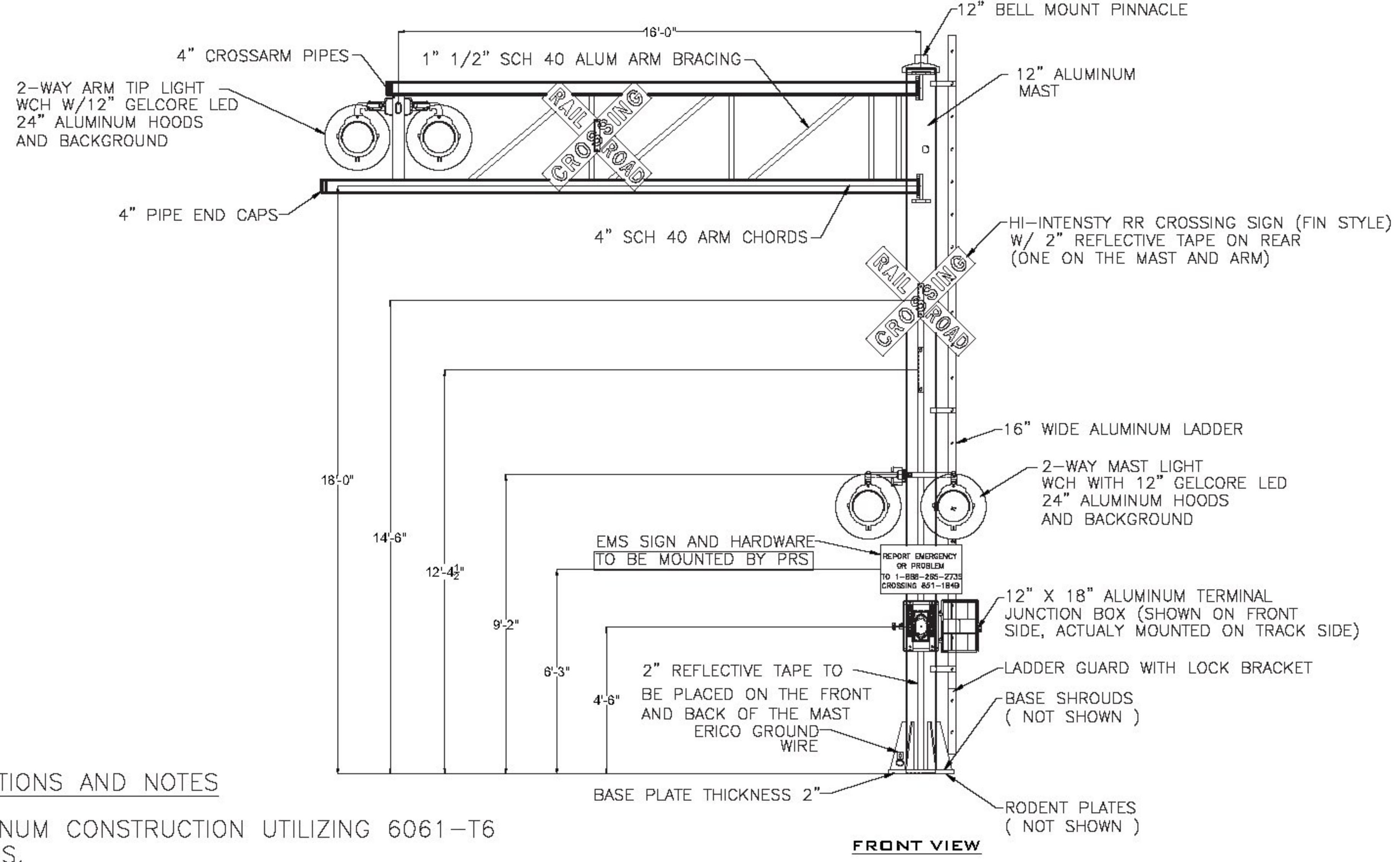
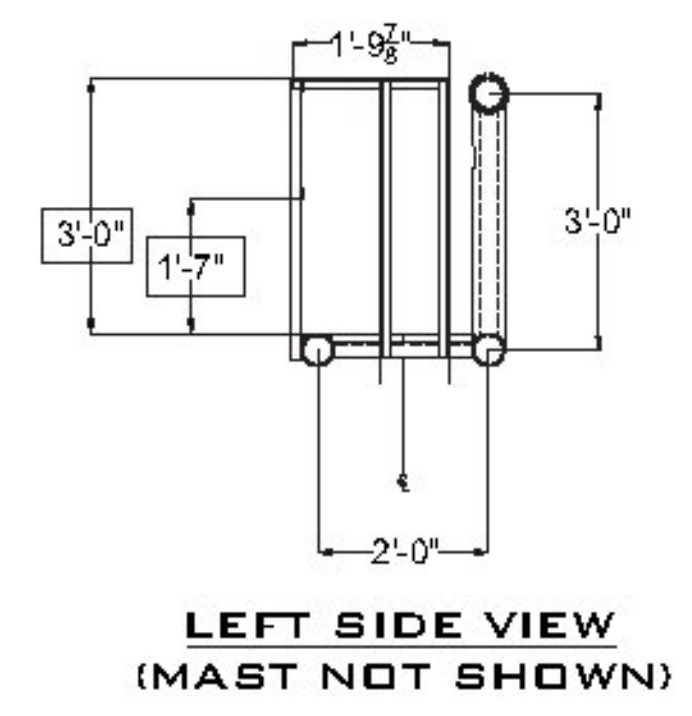
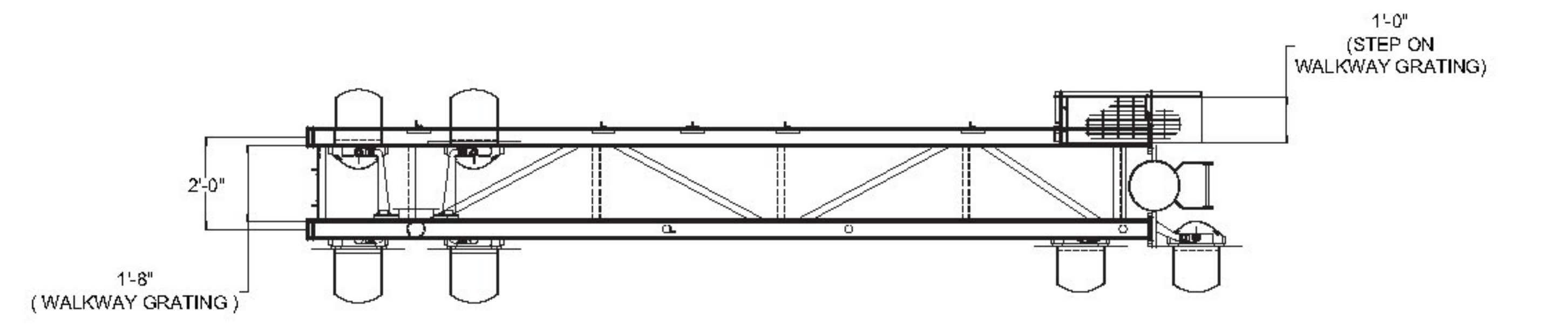


# SALES DRAWING

TORQUE VALUES	
TORQUE VALUES FOR 18-8 S/S HARDWARE WITHOUT ANTI-SEIZE COMPOUND.	
1. 3/8"-16 BOLTS:	236 IN. LBS.
2. 1/2"-13 BOLTS:	517 IN. LBS.
3. 5/8"-11 BOLTS:	1110 IN. LBS.
4. 1"-8 BOLTS:	3440 IN. LBS.
TORQUE VALUES FOR 18-8 S/S HARDWARE WITH ANTI-SEIZE COMPOUND.	
1. 3/8"-16 BOLTS:	201 IN. LBS.
2. 1/2"-13 BOLTS:	439 IN. LBS.
3. 5/8"-11 BOLTS:	944 IN. LBS.
4. 1"-8 BOLTS:	2924 IN. LBS.



**INCLUDED:**

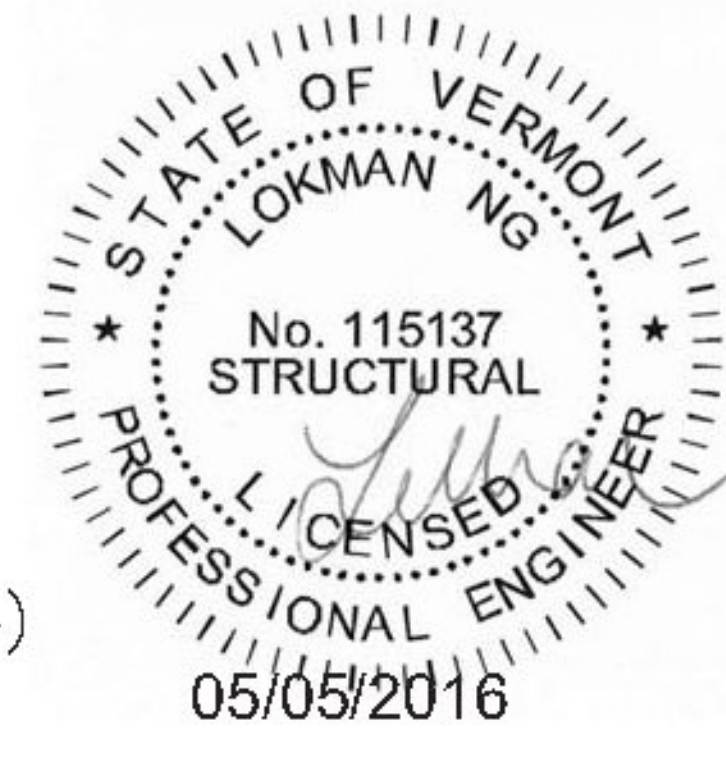
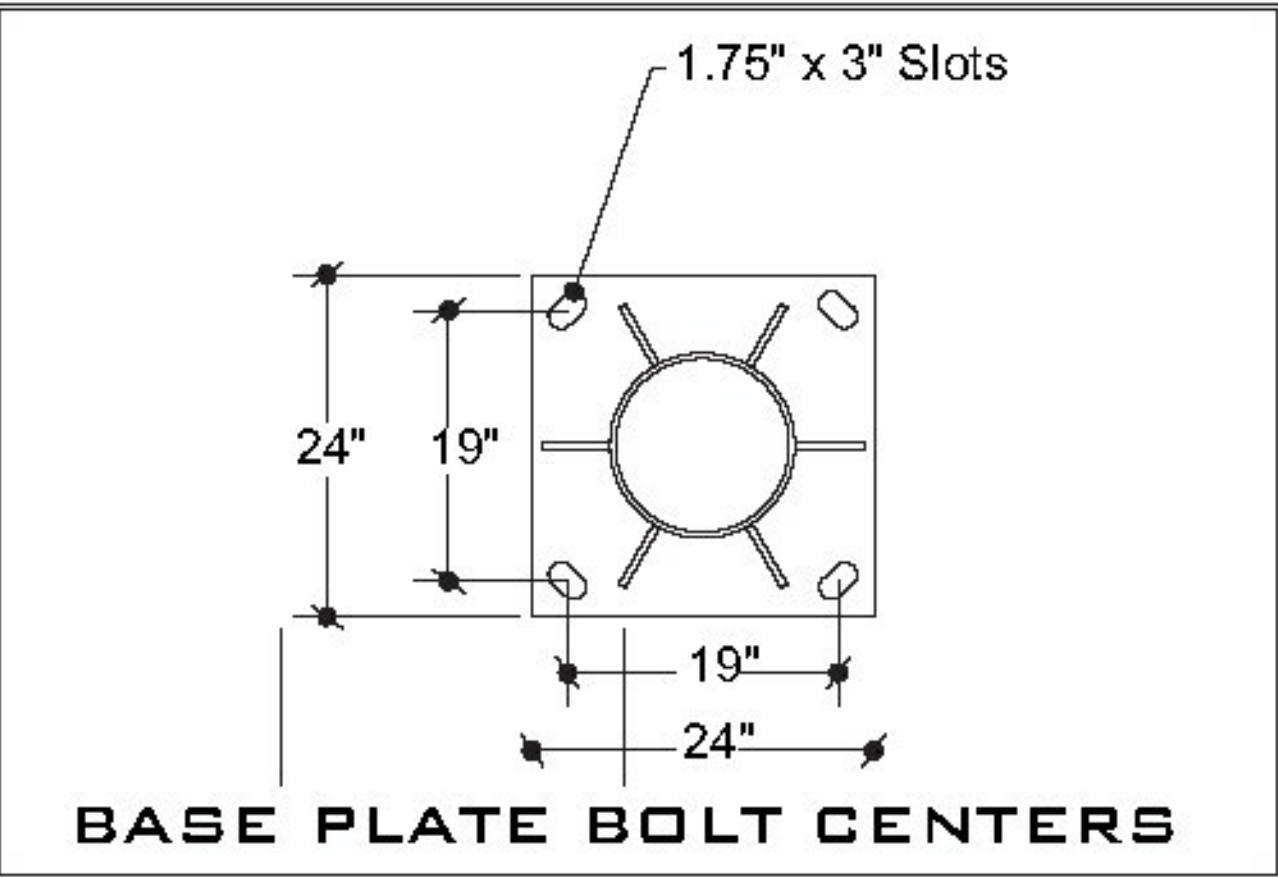
- \* #10 OKONITE CABLE
- \* PRECAST FOUNDATION (DP-4B)

**NOT INCLUDED:**

- \* BELL
- \* TRACK SIGN
- \* STOP ON RED SIGN
- \* SIDE STREET STANDOFF BRACKET
- \* MALFUNCTION SIGN BRACKET
- \* RESISTORS IN THE CROSSARMS
- \* SEALTITE ENTRANCE CONDUIT
- \* SEALTITE ENTRANCE CONNECTOR
- \* LADDER CAGE
- \* SURE CLIMB SAFETY CABLE ASSEMBLY
- \* TOE KICK PLATE ON ARM

**SPECIFICATIONS AND NOTES**

1. ALL ALUMINUM CONSTRUCTION UTILIZING 6061-T6 EXTRUSIONS.
2. STAINLESS STEEL HARDWARE PROVIDED.
3. GMAW WELDING PROCESS UTILIZING 5356 ALUMINUM ALLOY FILLER MATERIAL.
4. CABLE IS ROUTED THROUGH MAST PIPE, ARM PIPE, OR FLEXIBLE CONDUIT.
5. ALL THREADED OPENINGS PLUGGED BEFORE SHIPMENT.
6. MEETS SPECIAL PROVISIONS FOR: ARLINGTON STP 0114(4) DATED FEBRUARY 24, 2016
7. DESIGN WIND SPEED = 100 MPH (AASHTO)



<b>PROGRESS P/N 94CANT1655M</b>			
JOB #	PRODUCTION ORDER		
THE DRAWING IS PROPRIETARY PROPERTY OF PROGRESS RAIL SERVICES		Louisville Signal Division	
DRAWN BY:	JEA	DATE:	04/11/16
CHECKED BY:	XXX	DATE:	00/00/00
UNLESS OTHERWISE SPECIFIED DIMENSIONS ARE IN INCHES		ARLINGTON, VT	
TOLERANCES		16' RH HIGHWAY CANTILEVER	
DECIMAL	FRACTIONS	DRAWING #:	9454ST0102
.0625"+	+ 1/16"	REV.	A
.0625"-	- 1/16"	DO NOT SCALE THIS DRAWING	